

B.M. "M29B-1" - BRASS DISC IN CONCRETE  
 STA. 14+100±, 16m± RT.  
 ELEV. = 243.566

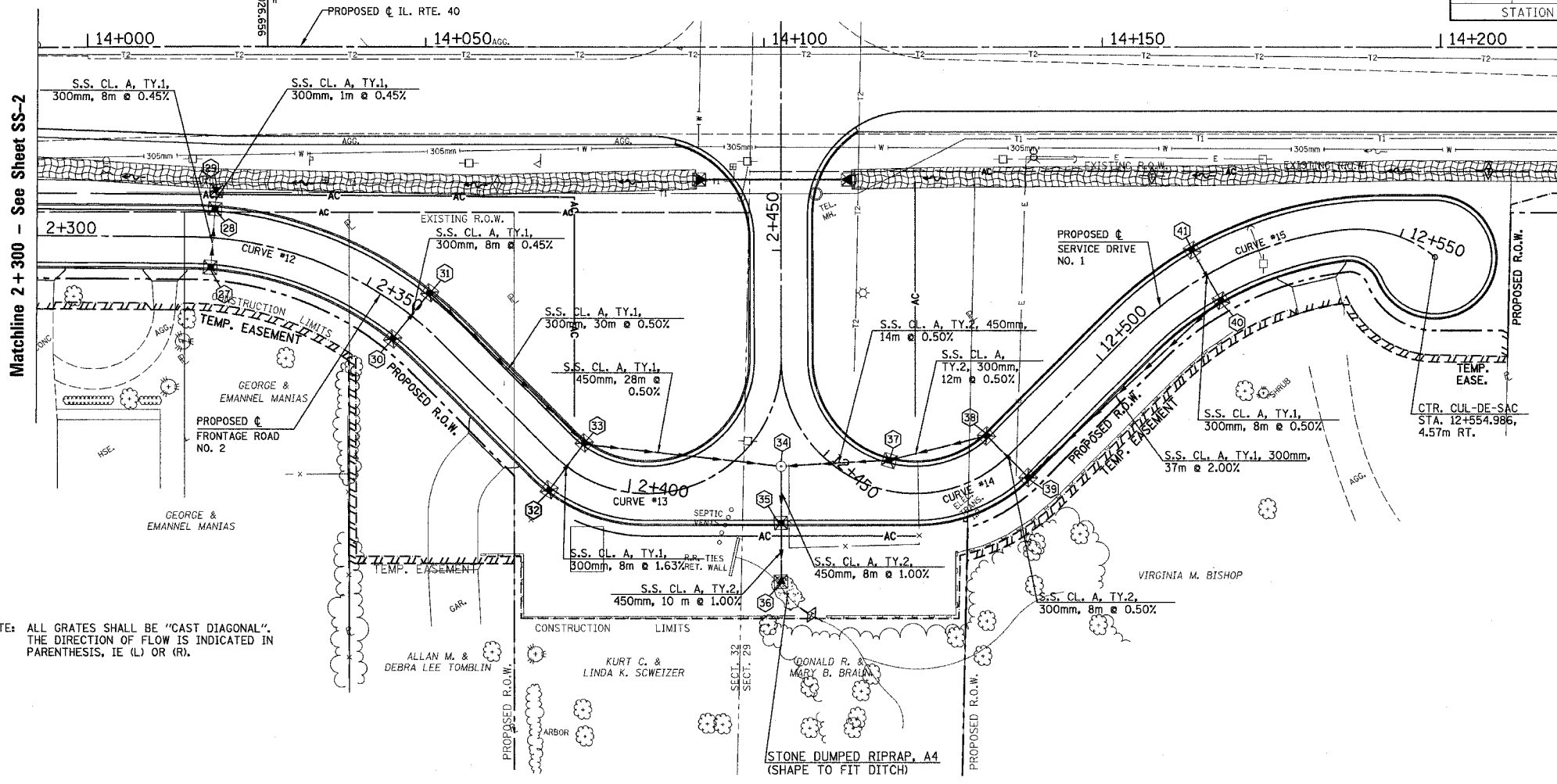
T.B.M. "2" - TOP VALVE STEM FIRE HYD.  
 STA. 14+002±, 16m± RT.  
 ELEV. = 244.011

SEC.32 & 29, T.10N., R.8E., 4th P.M.

RTE NO.	SECTION	COUNTY	TOTAL SHEET #
FA 646	(Y)W-1, RS-3	PEORIA	142 78
STATION 2+300 TO STATION 2+450			

- 27 INLET, TYPE G-1 (L)  
 STA. 2+326, 3.96m RT.  
 E.P. EL. = 243.123  
 OUTLET EL. = 242.488
- 28 INLET, TYPE G-1 (R)  
 STA. 2+326, 3.96m LT.  
 E.P. EL. = 243.123  
 OUTLET EL. = 242.452  
 INLET EL. = 242.452
- 29 P.R.C. FLARED END SECT. 300  
 STA. 2+326, 7.5m LT.  
 INV. EL. = 242.438
- 30 INLET, TYPE G-1 (L)  
 STA. 2+358, 3.96m RT.  
 E.P. EL. = 242.882  
 OUTLET EL. = 241.880
- 31 INLET, TYPE G-1 (R)  
 STA. 2+358, 3.96m LT.  
 E.P. EL. = 242.882  
 OUTLET EL. = 241.820  
 INLET EL. = 241.840
- 32 INLET, TYPE G-1 (R)  
 STA. 2+390, 3.96m RT.  
 E.P. EL. = 242.799  
 OUTLET EL. = 241.800
- 33 INLET, TYPE G-1 (L)  
 STA. 2+390, 3.96m LT.  
 E.P. EL. = 242.799  
 OUTLET EL. = 241.650  
 S.W. INLET EL. = 241.670  
 S.E. INLET EL. = 241.670
- 34 MANHOLE TYPE A, 1.2m DIA.  
 TY. 1 FRAME & CLOSED LID  
 STA. 2+420.50, 5.56m RT.  
 RIM EL. = 243.158  
 OUTLET EL. = 240.860  
 S. INLET EL. = 241.510  
 N. INLET EL. = 240.880

NOTE: ALL GRATES SHALL BE "CAST DIAGONAL".  
 THE DIRECTION OF FLOW IS INDICATED IN  
 PARENTHESIS, IE (L) OR (R).



- 35 INLET, TYPE G-1 (R)  
 STA. 2+416.35, 11.43m RT.  
 E.P. EL. = 242.906  
 OUTLET EL. = 239.98  
 WEST INV. EL. = 240.780
- 36 P.R.C. FLARED END SECT. 450  
 STA. 2+413.44, 18.74m RT.  
 INV. EL. = 239.905
- 37 INLET, TYPE G-1 (R)  
 STA. 12+460, 3.96m LT.  
 E.P. EL. = 242.965  
 OUTLET EL. = 240.950  
 INLET EL. = 240.970
- 38 INLET, TYPE G-1 (L)  
 STA. 12+480, 3.96m LT.  
 E.P. EL. = 243.125  
 OUTLET EL. = 241.030  
 INLET EL. = 241.050
- 39 INLET, TYPE G-1 (R)  
 STA. 12+480, 3.96m RT.  
 E.P. EL. = 243.125  
 OUTLET EL. = 241.090  
 INLET EL. = 242.110
- 40 INLET, TYPE G-1 (R)  
 STA. 12+520, 3.96m RT.  
 E.P. EL. = 243.915  
 OUTLET EL. = 242.850  
 INLET EL. = 242.870
- 41 INLET, TYPE G-1 (L)  
 STA. 12+520, 3.96m LT.  
 E.P. EL. = 243.915  
 OUTLET EL. = 242.910

