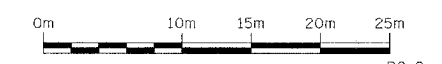
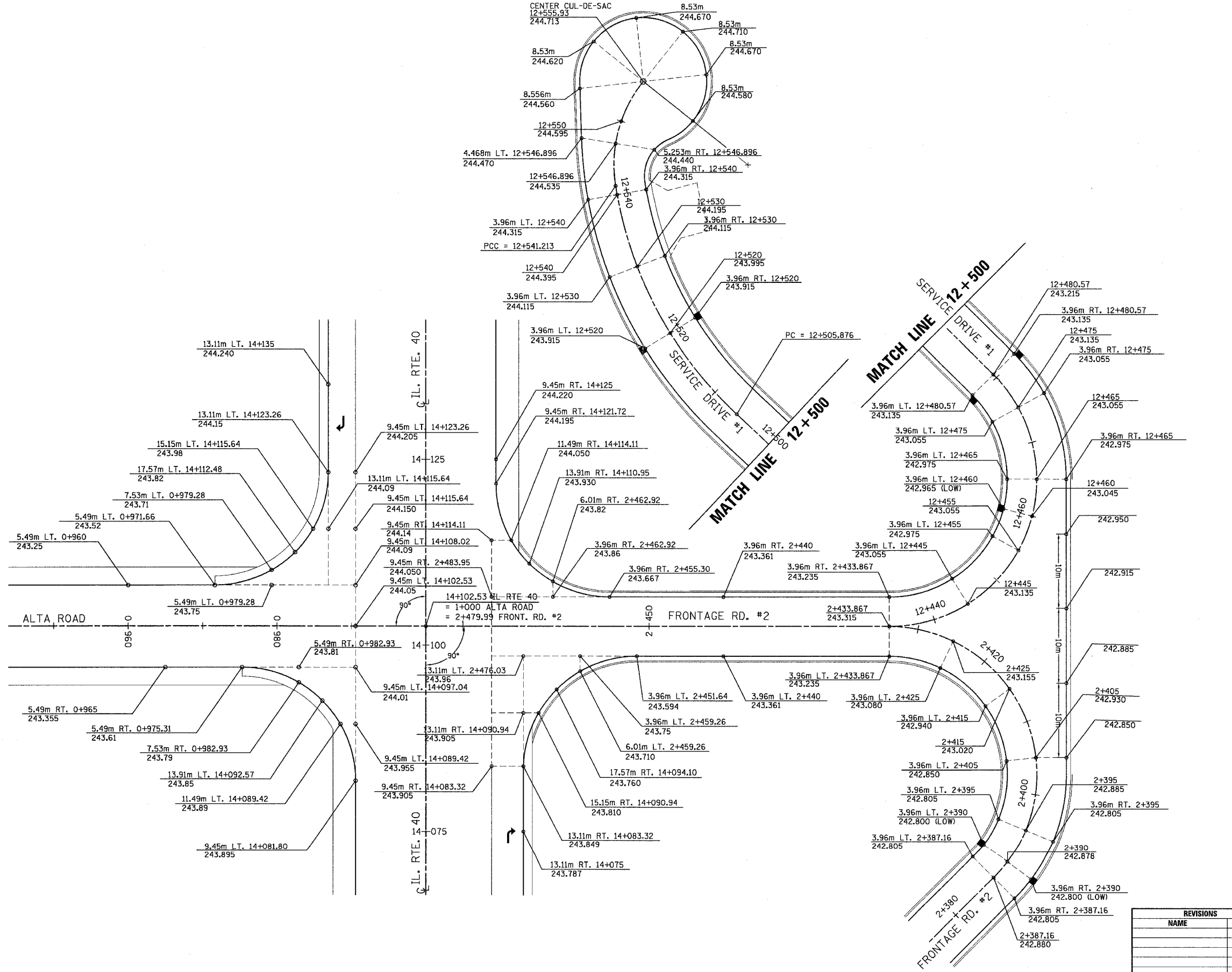


SEC. 32, T. 10N., R. 8E., 4th P.M.

RTE NO.	SECTION	COUNTY	TOTAL	SHEET #
FA 646	(Y)W-1, RS-3	PEORIA	142	84



REVISIONS	
NAME	DATE

ILLINOIS DEPARTMENT OF TRANSPORTATION
PAVEMENT GRADES
 INTERSECTION OF FRONTAGE ROAD NO. 2,
 ALTA ROAD & SERVICE DRIVE NO. 1
 FA ROUTE 646, SECTION (Y) W-1, RS-3
 PEORIA COUNTY

SCALE: 1:250
 DATE: 09/01/06

DRAWN BY: JDU
 CHECKED BY: ECM