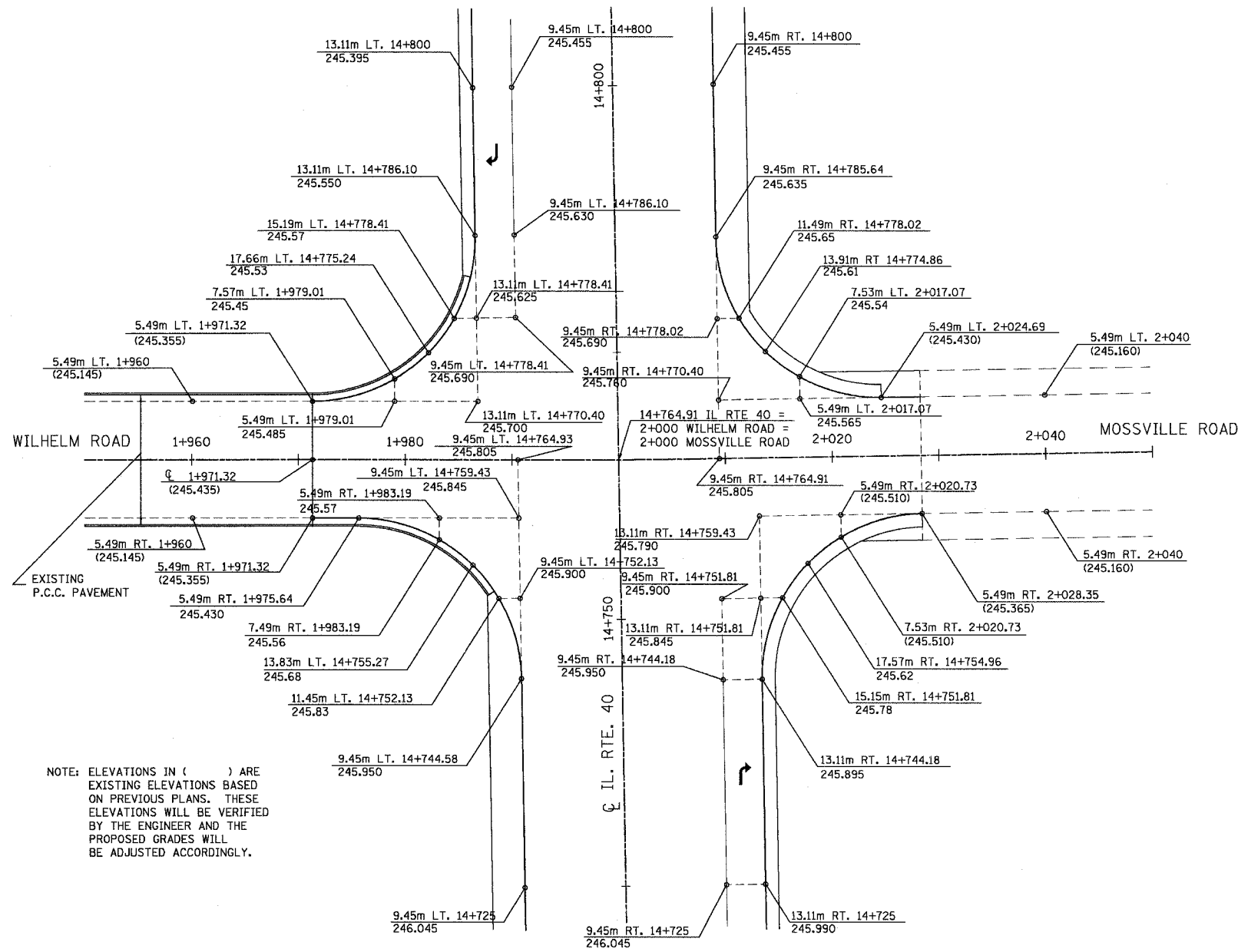
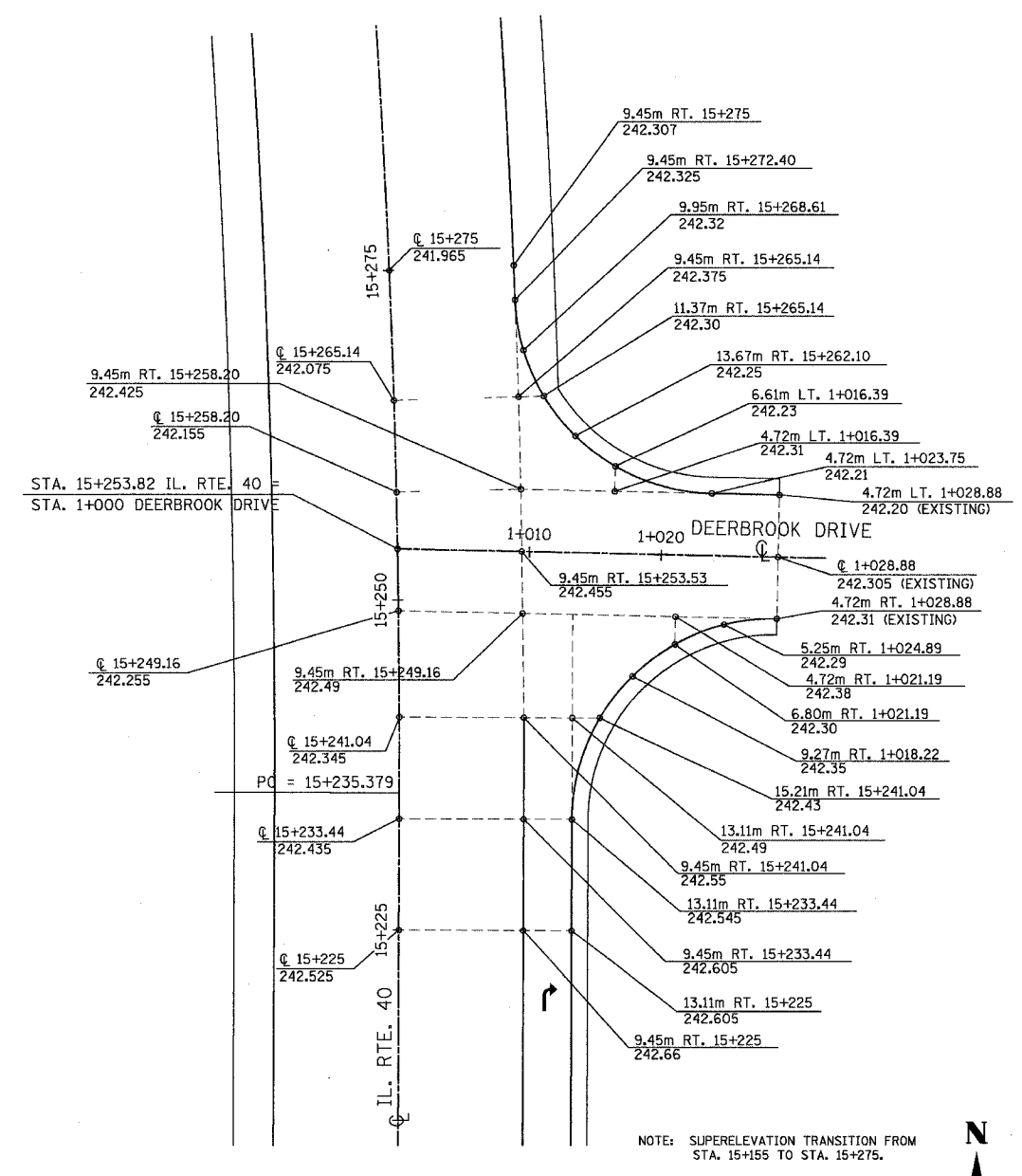


SEC.32, T.10N., R.8E., 4th P.M.

RTE NO.	SECTION	COUNTY	TOTAL	SHEET #
FA 646	(Y)W-1, RS-3	PEORIA	142	85



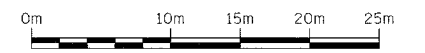
IL RTE 40 & WILHELM ROAD & MOSSVILLE ROAD



IL RTE 40 & DEERBROOK DRIVE

NOTE: ELEVATIONS IN () ARE EXISTING ELEVATIONS BASED ON PREVIOUS PLANS. THESE ELEVATIONS WILL BE VERIFIED BY THE ENGINEER AND THE PROPOSED GRADES WILL BE ADJUSTED ACCORDINGLY.

NOTE: SUPERELEVATION TRANSITION FROM STA. 15+155 TO STA. 15+275.



REVISIONS	
NAME	DATE

ILLINOIS DEPARTMENT OF TRANSPORTATION
PAVEMENT GRADES
 INTERSECTION OF IL RTE 40
 WILHELM ROAD & MOSSVILLE ROAD
 FA ROUTE 646, SECTION (Y) W-1, RS-3
 PEORIA COUNTY

SCALE: 1:250
 DATE: 09/01/06

DRAWN BY: JDU
 CHECKED BY: ECM