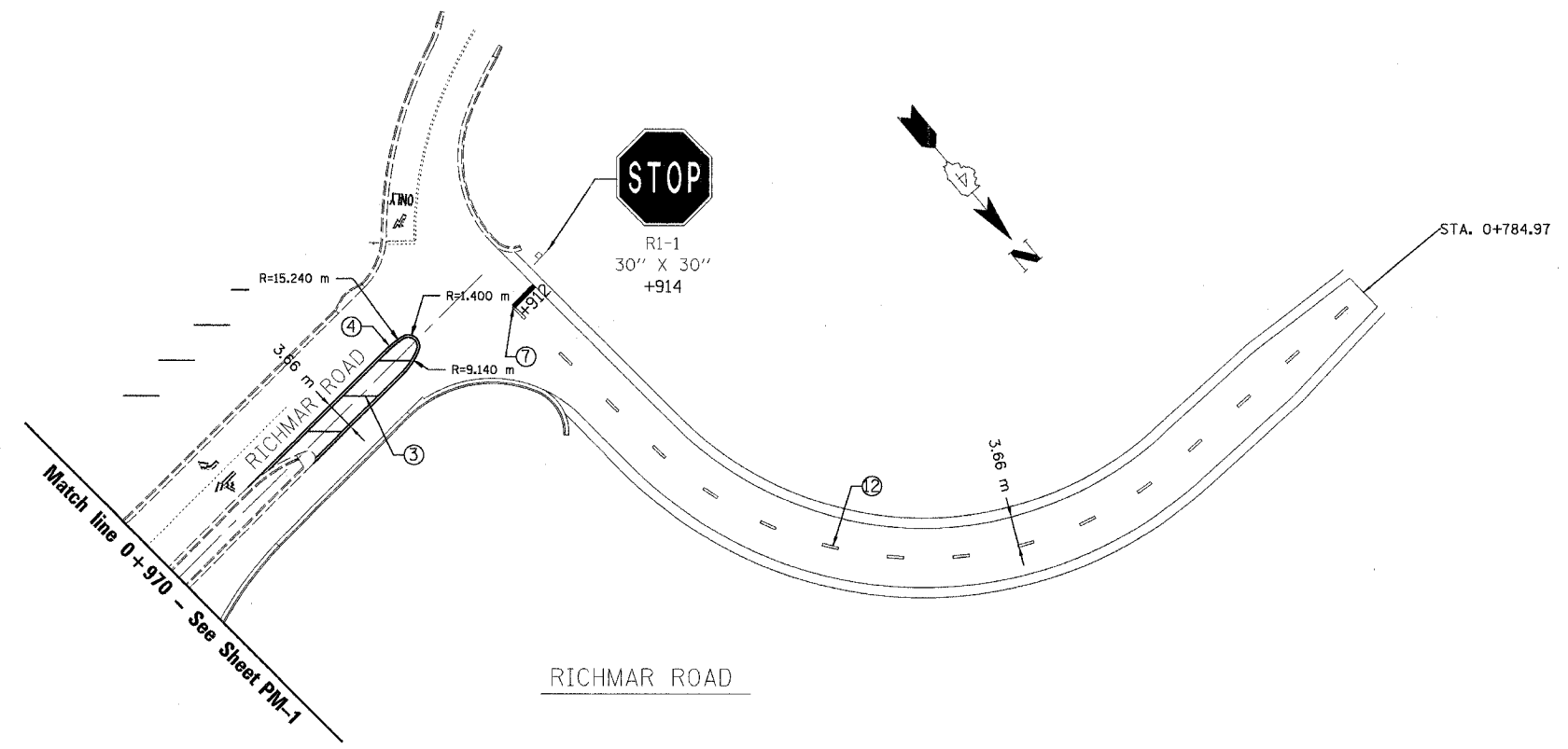


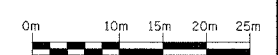
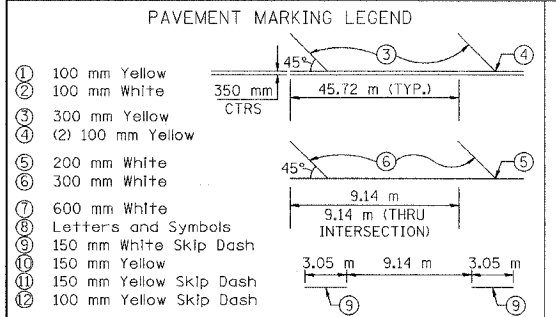
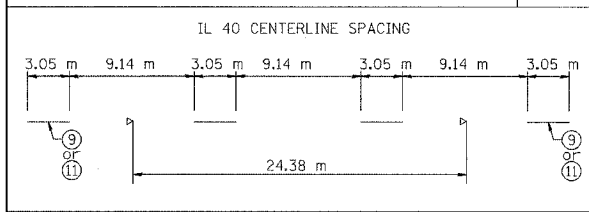
SEC.32, T.10N., R.8E., 4th P.M.

RTE NO.	SECTION	COUNTY	TOTAL SHEET #
FA 646	(Y)W-1, RS-3	PEORIA	142 91
RICHMAR ROAD - STA. 0+784.97 TO STA. 0+970			



SIGN PANEL ERECTION DETAILS  
REFER TO STANDARD 720006, MULTILANE  
HIGHWAYS, NONFREEWAYS.

- RAISED REFLECTIVE PAVEMENT MARKERS (RRPM)
- ① ◀ ONE-WAY RRPM CRYSTAL MARKER AT 24.38 m CENTERS
  - ② ◀ ONE-WAY RRPM CRYSTAL MARKER AT 12.19 m CENTERS
  - ③ ▶ TWO-WAY RRPM AMBER MARKER AT 12.19 m
  - ④ ▶ ONE-WAY RRPM AMBER MARKER AT 12.19 m



REVISIONS	
NAME	DATE

ILLINOIS DEPARTMENT OF TRANSPORTATION  
**PAVEMENT MARKINGS  
AND SIGNING PLAN**  
ILLINOIS ROUTE 40  
RICHMAR ROAD

SCALE: 1:400  
DATE: 09/10/06

DRAWN BY: JDU  
CHECKED BY: ECM

PM-6