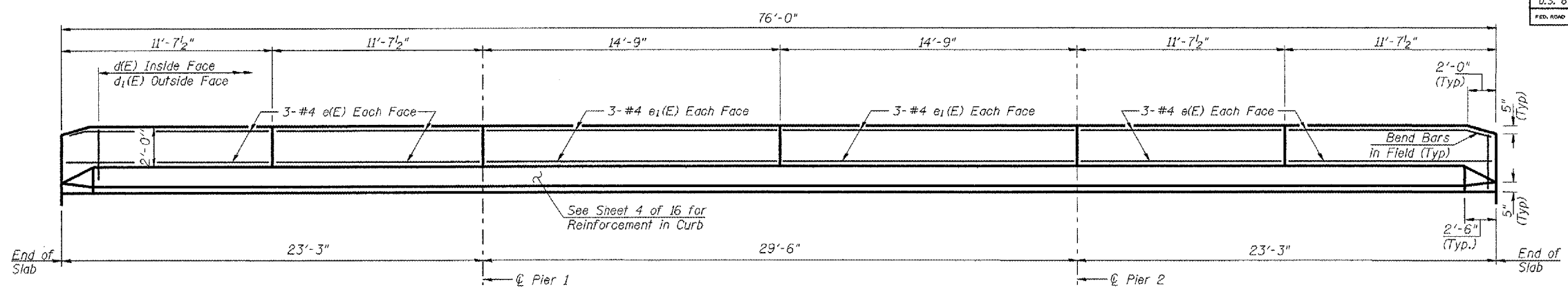


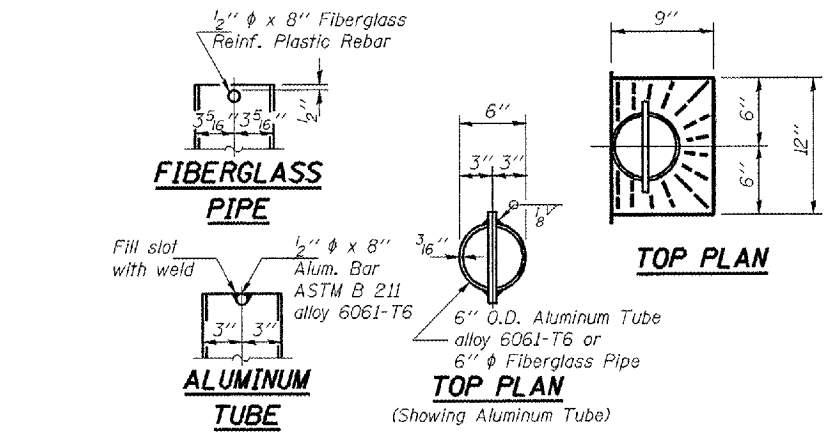
ROUTE NO.	SECTION	COUNTY	SHEETS	SHEET NO.
F.A.P. 310 U.S. 67	(41-A)BR	McDonough	58	22
FED. ROAD DIST. NO. 4		FED. AID PROJECT		

SHEET NO. 5
16 SHEETS

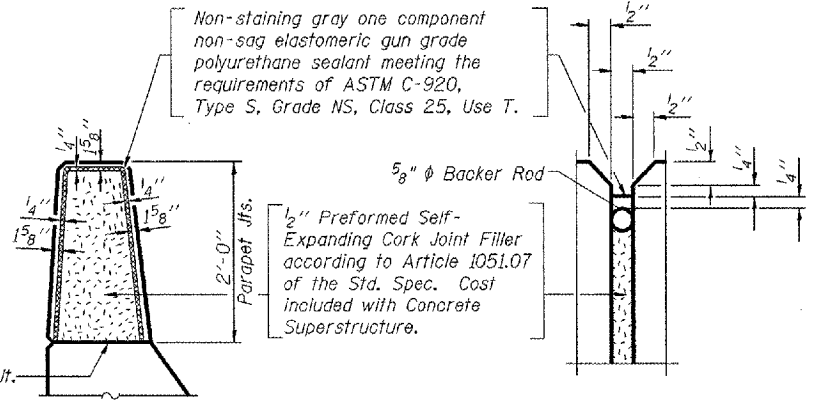
Contract #88939



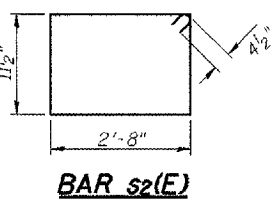
INSIDE ELEVATION OF PARAPET
(East Parapet Shown)



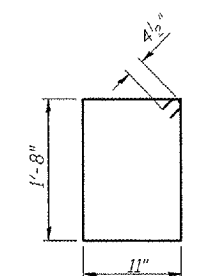
Notes:
The exterior surfaces of the floor drains shall be coated or pigmented by the manufacturer with a color that matches the concrete.
Fiberglass pipe shall conform to ASTM D 2996, with short-time rupture strength hoop tensile stress of 30,000 p.s.i. minimum.



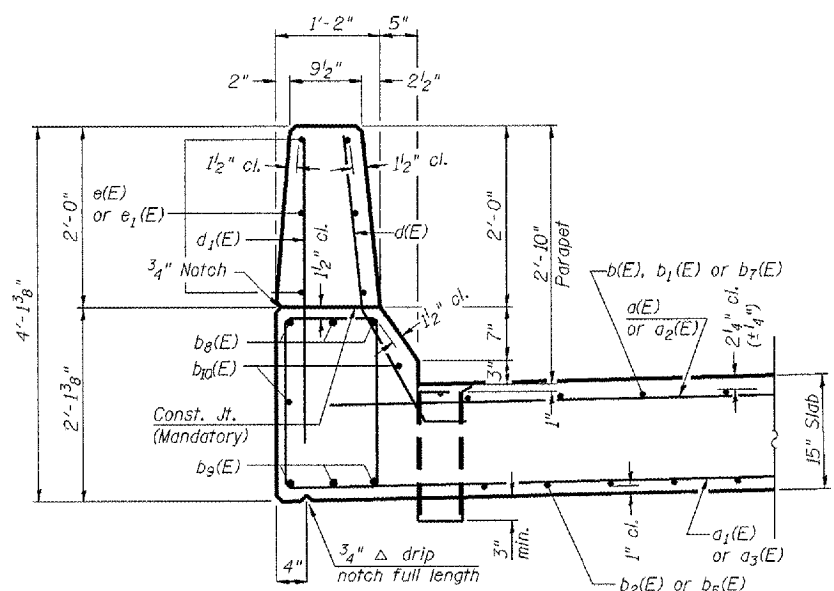
PARAPET JOINT DETAILS



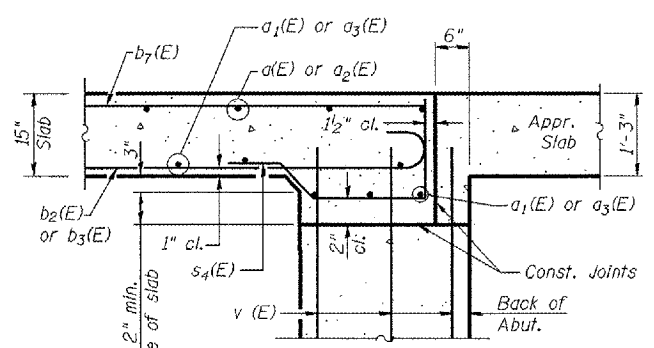
BAR s2(E)



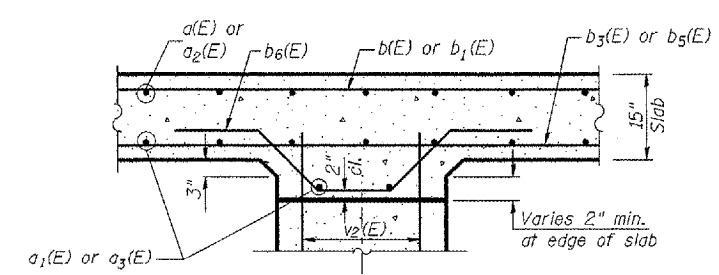
BAR s3(E)



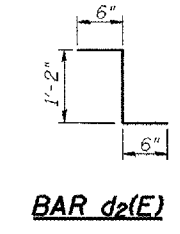
SECTION THRU PARAPET



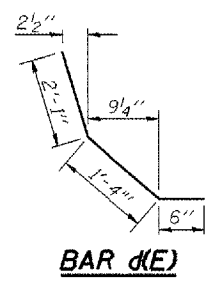
SECTION A-A



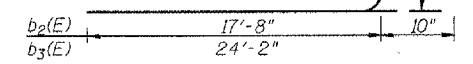
SECTION B-B



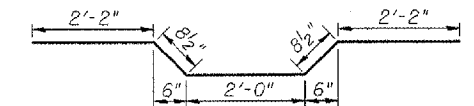
BAR d2(E)



BAR d(E)



BAR b2(E) & b3(E)



BAR b6(E)

REVISIONS	
NAME	DATE

LIJ ENGINEERING, LTD.
300 Chestnut
Chicago, Illinois 60629
Tel: (312) 462-8688
Fax: (312) 462-8106
Designed By: DLS
Checked By: WJH
Drawn By: ADB
Date: 01/95
File: 0550048.dwg

ILLINOIS DEPARTMENT OF TRANSPORTATION
SUPERSTRUCTURE DETAILS
F.A.P. ROUTE 310 (US 67)
OVER CARTER CREEK
SECTION (41A)BR
MCDONOUGH COUNTY
STA. 567+41.50
S.N. 055-0048