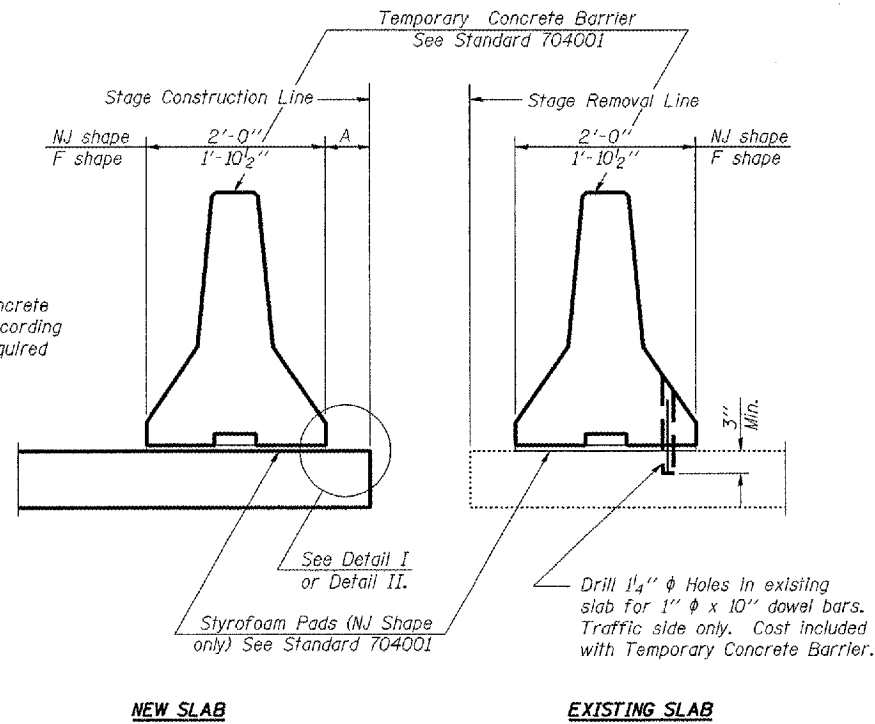


ROUTE NO.	SECTION	CONTRACT	TOTAL SHEETS	SHEET NO.
F.A.P. 310 U.S. 67	(41A)BR	McDonough	58	26
FED. ROAD DIST. NO. 4		FED. AID PROJECT		

SHEET NO. 9
16 SHEETS

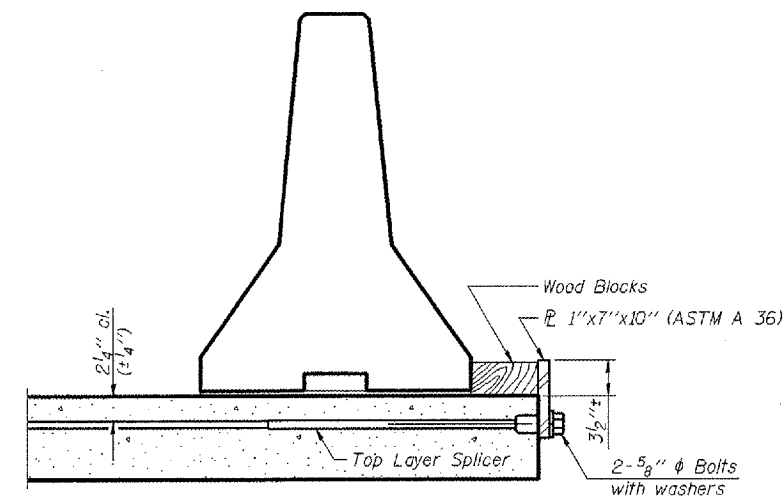
Contract #88939



NEW SLAB

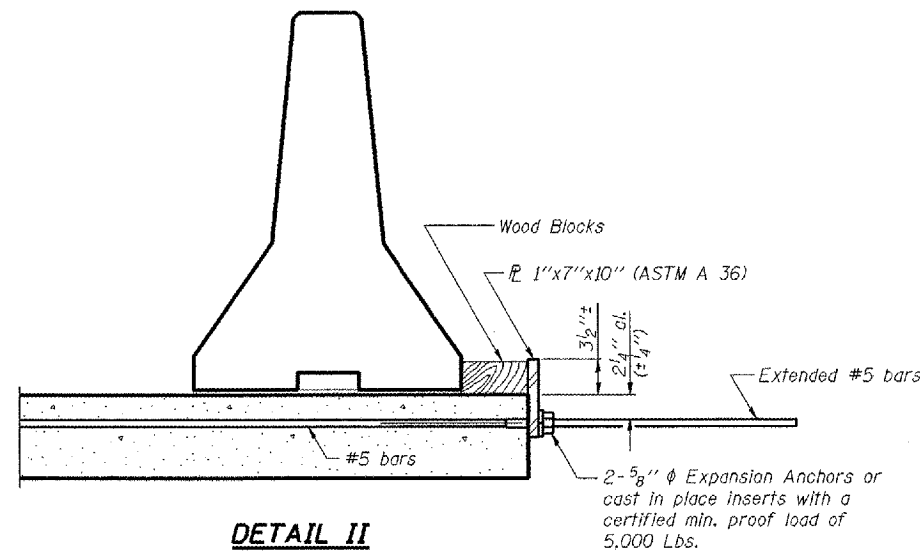
EXISTING SLAB

SECTIONS THRU SLAB



DETAIL I

The 1"x7"x10" Plate shall not be removed until Stage II Construction forms and reinforcement bars are in place.

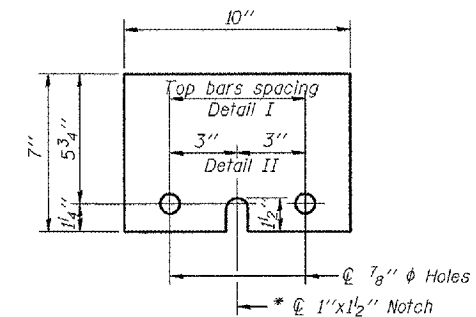


DETAIL II

The 1"x7"x10" Plate shall not be removed until Stage II Construction forms and all reinforcement bars are in place and the concrete is ready to be placed.

NOTES

- Detail I - With Bar Splicer or Couplers:
Connect one (1) 1"x7"x10" steel \bar{P} to the top layer of couplers with 2-5/8" ϕ bolts screwed to coupler at approximate \bar{C} of each barrier panel.
 - Detail II - With Extended Reinforcement Bars:
Connect one (1) 1"x7"x10" steel \bar{P} to the concrete slab with 2-5/8" ϕ Expansion Anchors or cast in place inserts spaced between the top layer of reinforcement at approximate \bar{C} of each barrier panel.
- Cost of anchorage is included with Temporary Concrete Barrier.



P 1"x7"x10"
* Required only with Detail II

LIN ENGINEERING, LTD.
200 W. Chestnut
Guthrie, Illinois 62929
Phone: 618-443-9688
Fax: 618-283-4106
Designed by: DLS
Checked by: MTH
Date: 01/05
Drawn by: ACD
File: 0800042.DWG

REVISIONS	
NAME	DATE

ILLINOIS DEPARTMENT OF TRANSPORTATION
TEMPORARY CONCRETE BARRIER
F.A.P. ROUTE 310 (US 67)
OVER CARTER CREEK
SECTION (41A)BR
MCDONOUGH COUNTY
STA. 567+41.50
S.N. 055-0048