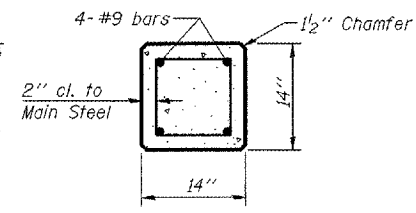
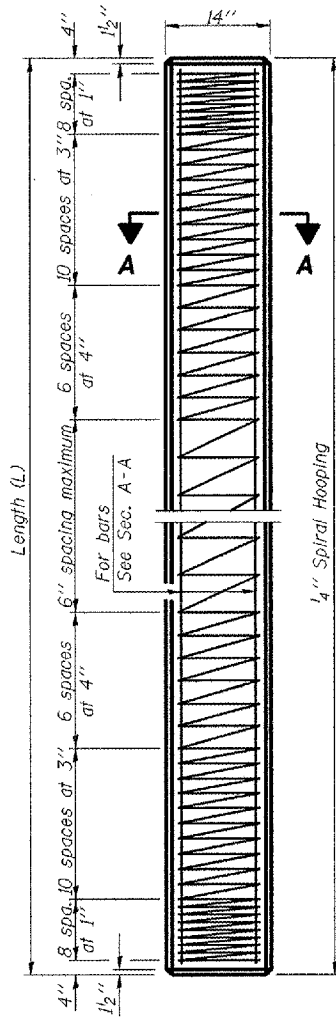


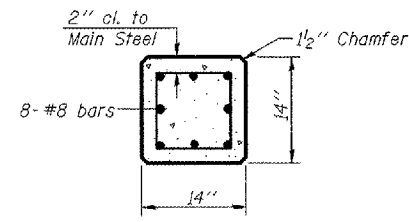
ROUTE NO.	SECTION	COUNTY	TOTAL SHEETS	SHEET NO.
F.A.P. 310 U.S. 67	(41-A)BR	McDonough	58	28
FED. ROAD DIST. NO. 4		FED. ROAD PROJECT		

SHEET NO. 11
16 SHEETS

Contract #88939



**SECTION A-A
FOR PILES UNDER
45' LONG**

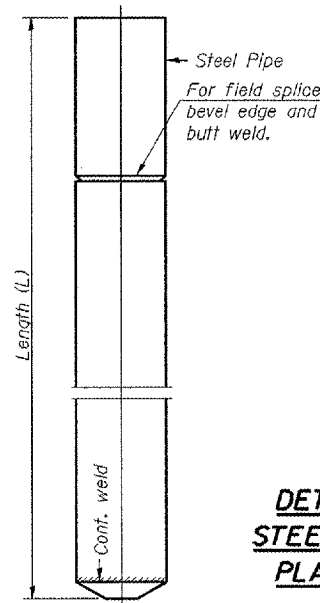


**SECTION A-A
FOR PILES 45'
OR MORE**

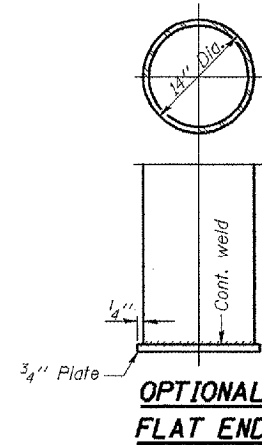
Handling: For Pile lengths up to 45' use two slings placed at a distance of 0.21L from each end. For Piles longer than 45', use three slings placed at a distance of 0.12L from each end and at mid point of pile.

**DETAIL OF PRECAST
CONCRETE PILES**

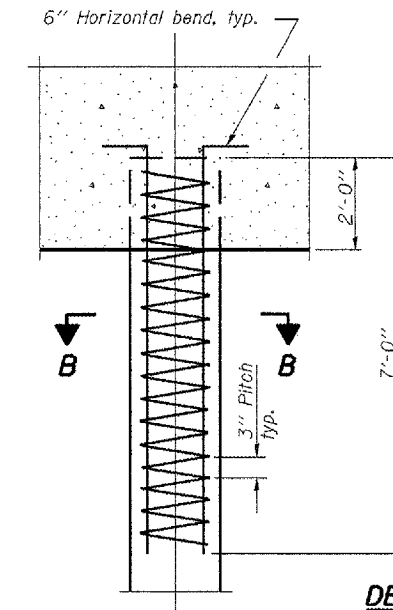
Notes:
Driving and bearing ends of pipe shall be cut square. The thickness of the shell shall be 0.250 inches with a tolerance of 5%. The shell shall be according to Article 1006.05(a) of the Standard Specifications.



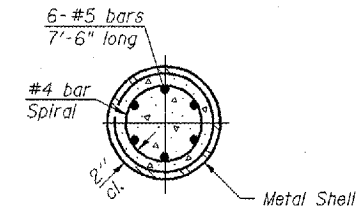
**DETAIL OF CYLINDRICAL
STEEL SHELL FOR CAST IN
PLACE CONCRETE PILES**



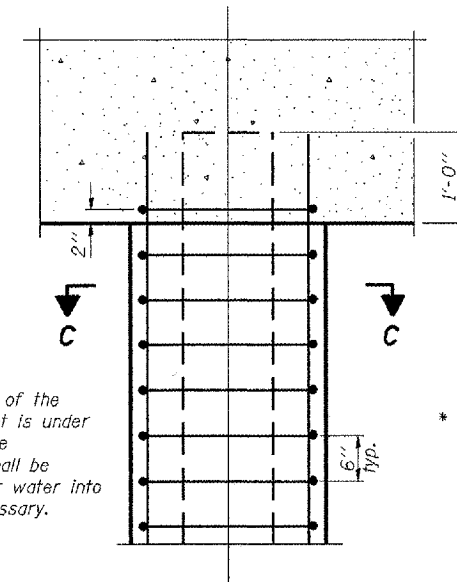
**OPTIONAL
FLAT END**



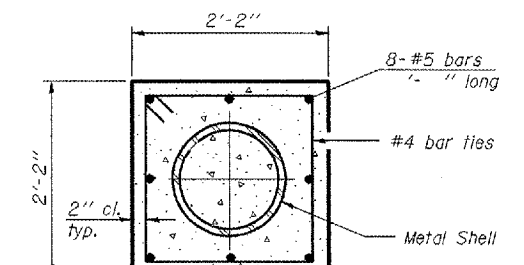
**DETAIL OF REINFORCEMENT FOR
METAL SHELLS AT ABUTMENTS**



SECTION B-B



**DETAIL OF PROTECTION
FOR METAL SHELLS AT PIERS**



SECTION C-C

The cost of Reinforcement, concrete, and excavation for forms is included with Concrete Encasement.

* If a portion of the pile encasement is under water, Concrete Encasement shall be tremmed under water into forms as necessary.

REVISIONS	
NAME	DATE

ILLINOIS DEPARTMENT OF TRANSPORTATION
PILE DETAILS
F.A.P. ROUTE 310 (US 67)
OVER CARTER CREEK
SECTION (41A)BR
MCDONOUGH COUNTY
STA. 567+41.50
S.N. 055-0048