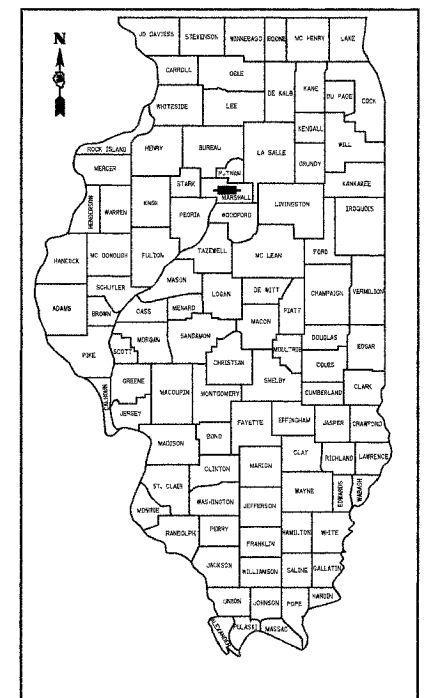


ROUTE NO.	SECTION	COUNTY	TOTAL SHEETS	SHEET NO.
C.H. 15 F.A.S. 365	06-00084 -00-BR	MARSHALL	15	1
ROAD DIST.	ILLINOIS	FED. AID PROJ.		

CONTRACT NO. 89409

STATE OF ILLINOIS DEPARTMENT OF TRANSPORTATION DIVISION OF HIGHWAYS PLANS FOR PROPOSED BRIDGE REPLACEMENT AND REHABILITATION PROGRAM

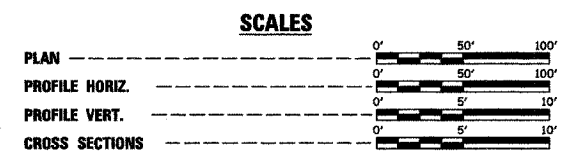
**SECTION 06-00084-00-BR
MARSHALL COUNTY
PROJECT NO. ACBRS-365(106)
COUNTY HIGHWAY 16
F.A.S. ROUTE 365
JOB NO. C-94-109-06**



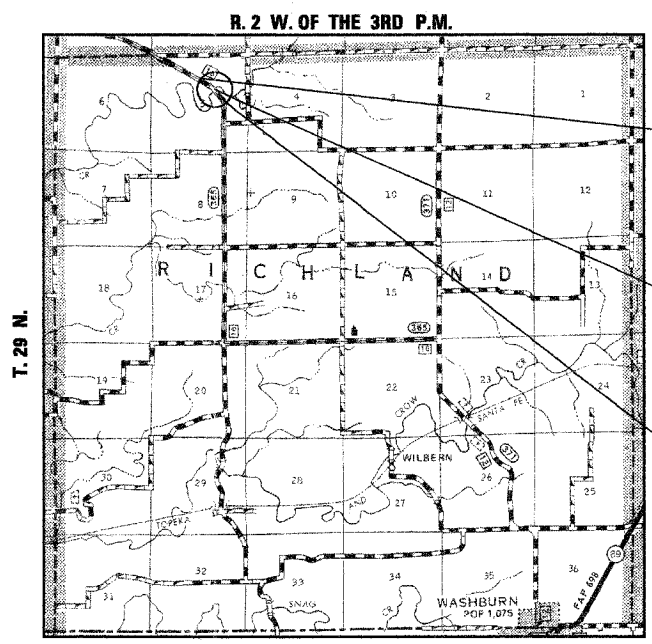
LOCATION OF SECTION INDICATED THUS:
CLASSIFICATION: RURAL TWO-LANE COLLECTOR
DESIGN VOLUME: 400-1000 ADT
CURRENT ADT: 637 (2006)
DESIGN SPEED: 40 MPH
3R DESIGN GUIDELINES
TOLL FREE JOINT UTILITY LOCATING
INFORMATION FOR EXCAVATORS (J.U.L.I.E.)
TELEPHONE NUMBER 1-800-892-0123

SHEET NO.	INDEX OF SHEETS TITLE
1.	COVER SHEET
2.	SUMMARY OF QUANTITIES, GENERAL NOTES & TYPICAL SECTIONS
3.	PLAN AND PROFILE SHEET
4.	SHOULDER AND GUARDRAIL DETAILS
5.-12.	BRIDGE PLANS
13.-15.	STATION CROSS SECTIONS

- STANDARDS:**
- 280001-02
 - 515001-02
 - 630001-06
 - 630301-03
 - 631026-02
 - 635006-02
 - 701301-02
 - 702001-06
 - BLR 21-6



**QCQA BITUMINOUS
SUPERPAVE PROJECT**



LOCATION PLAN

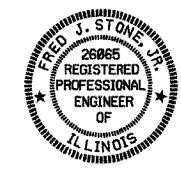
GROSS LENGTH OF SECTION = 410.00 FEET = 0.078 MILES
NET LENGTH OF SECTION = 410.00 FEET = 0.078 MILES

SCALE IN MILES

**IMPROVEMENT BEGINS
STA. 123 + 50**

**STA. 125 + 55 - SPECIAL BRIDGE DESIGN
PRECAST PRESTRESSED CONCRETE
DECK BEAM BRIDGE, THREE SPANS @
26', 43', 26'; 28'-0" ROADWAY, SKEW = 15°
EXISTING S.N. 062-3641
PROPOSED S.N. 062-3651**

**IMPROVEMENT ENDS
STA. 127 + 60**



Fred J. Stovall (9.1.06)
ILLINOIS PROFESSIONAL NO. 26065
EXPIRES 11-30-07

APPROVED	<u>SEPTEMBER 11, 2006</u> <i>George P. McLean</i> COUNTY ENGINEER
PASSED	<u>SEPTEMBER 8, 2006</u> <i>Leo Laballe</i> DISTRICT FOUR ENGINEER OF LOCAL ROADS & STREETS
RELEASED FOR BID BASED ON LIMITED REVIEW	<u>SEPTEMBER 11, 2006</u> <i>J. E. Gove</i> DEPUTY DIRECTOR OF HIGHWAYS, REGION THREE ENGINEER
STATE OF ILLINOIS DEPARTMENT OF TRANSPORTATION	

4440 ASH GROVE
SPRINGFIELD, IL 62711
(217) 793-8800
www.fehr-graham.com

FEHR-GRAHAM & ASSOCIATES, LLC
ENGINEERING AND SCIENCE CONSULTANTS
MEMBER: N.E.C.E., N.E.H.C., N.E.T.C., N.E.S.C., N.E.W.C., N.E.P.C., N.E.C.C., N.E.S.E., N.E.W.E., N.E.P.E., N.E.C.E.