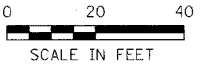
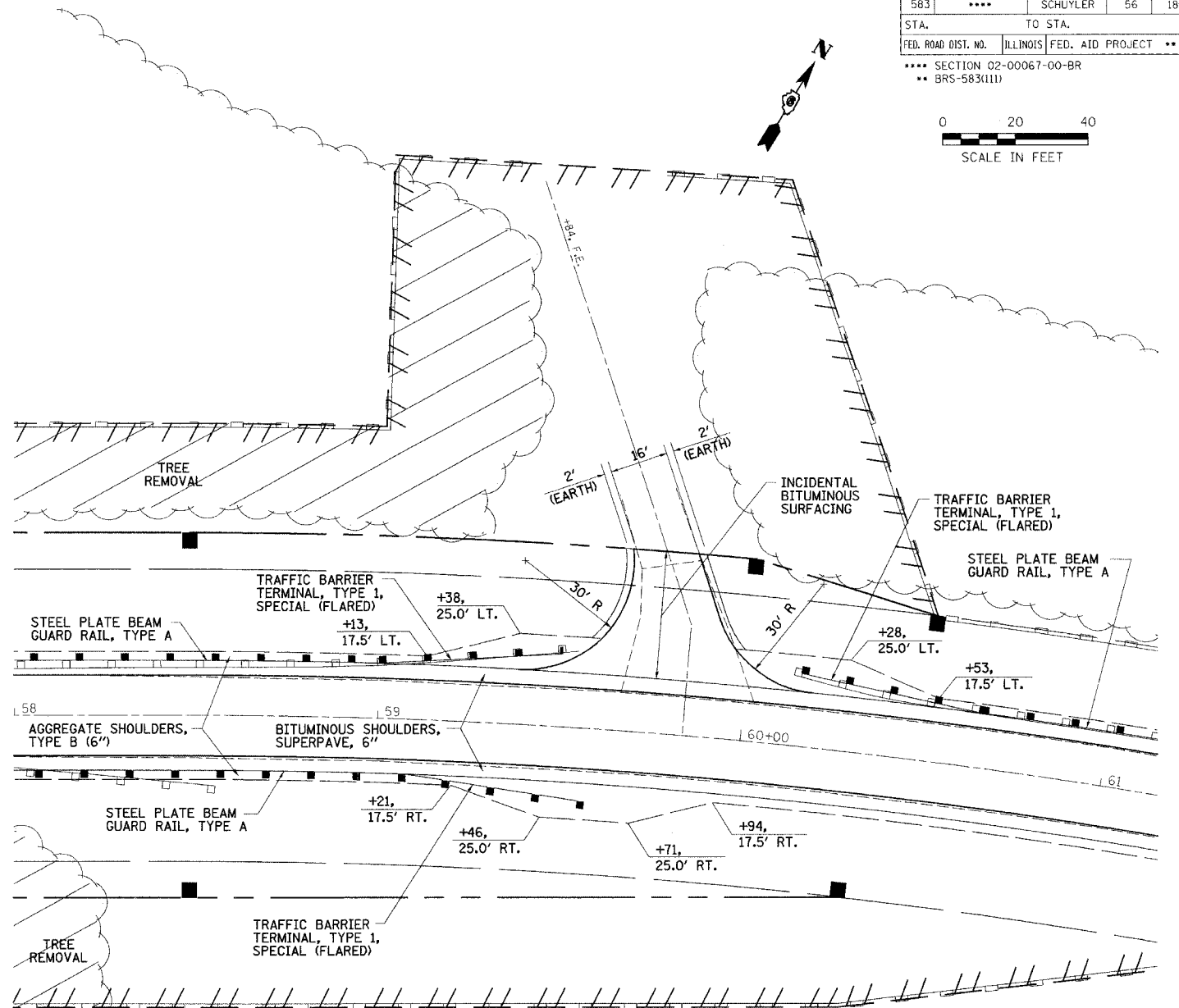
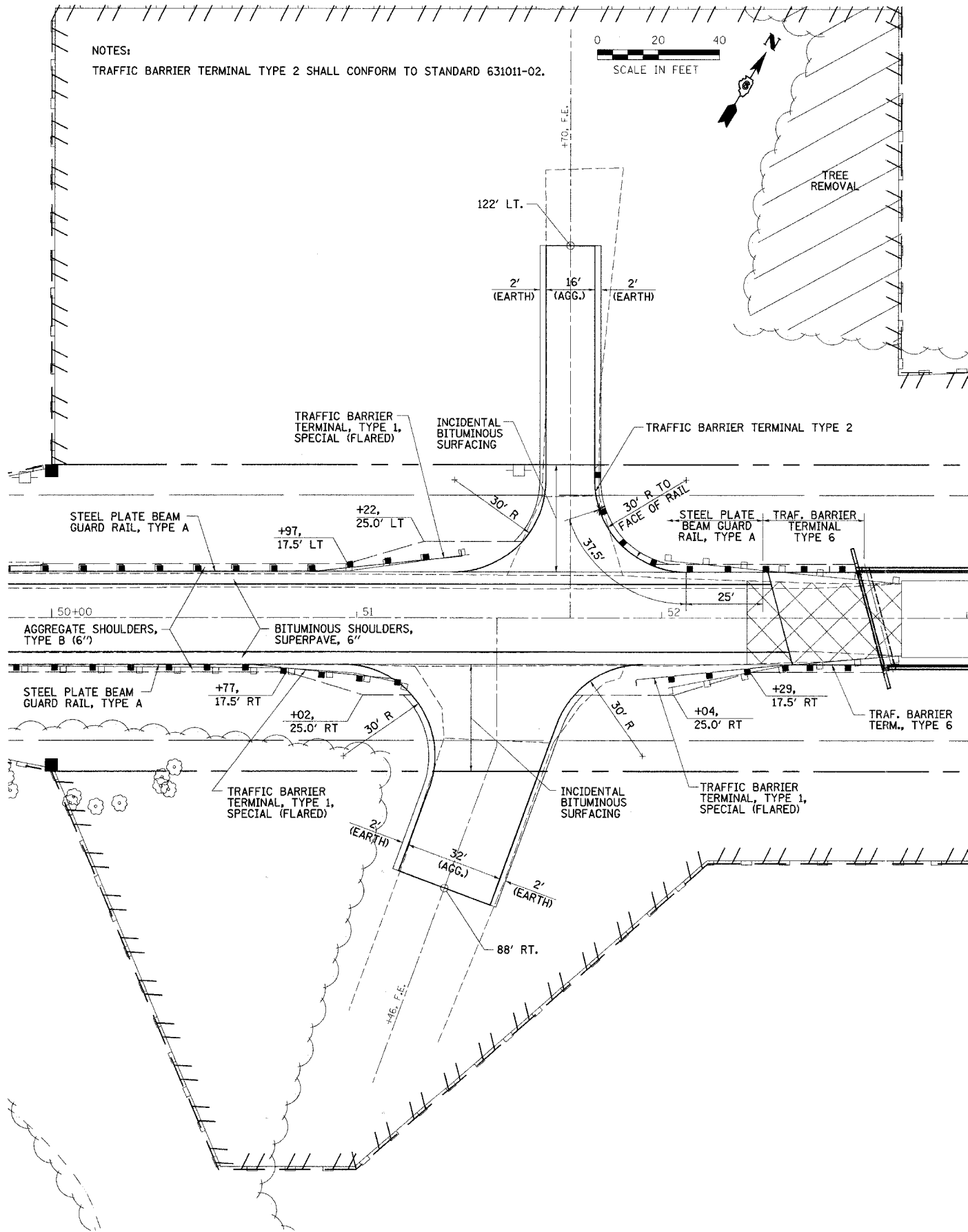
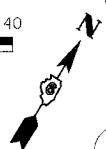
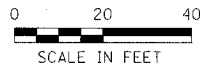


F.A.S. RTE.	SECTION	COUNTY	TOTAL SHEETS	SHEET NO.
583	****	SCHUYLER	56	18
STA. TO STA.				
FED. ROAD DIST. NO.		ILLINOIS FED. AID PROJECT **		
**** SECTION 02-00067-00-BR				
** BRS-583(111)				



**NOTES:**

TRAFFIC BARRIER TERMINAL TYPE 2 SHALL CONFORM TO STANDARD 631011-02.



**☉ CURVE DATA**  
 PI STA. = 61+18.92  
 $\Delta = 18^\circ 46' 53''$  (RT)  
 $D = 3^\circ 30' 00''$   
 $R = 1,637.02'$   
 $T = 270.73'$   
 $L = 536.61'$   
 $E = 22.24'$   
 P.C. STA. = 58+48.19  
 P.T. STA. = 63+84.80  
 S.E. = 6.0%  
 S.E. ATTAINED STA. 57+48.19 TO STA. 58+98.19

PLOT DATE = 5/23/06  
 FILE NAME = 58425.DWG  
 PLOT SCALE = 1"=40'  
 OPERATOR = RUSBR

REVISIONS	
NAME	DATE

ILLINOIS DEPARTMENT OF TRANSPORTATION

**DETAILS**

FAS 583 (CHS) OVER LAMOINE RIVER  
SECTION 02-00067-00-BR  
SCHUYLER COUNTY

SCALE: VERT. \_\_\_\_\_  
HORIZ. \_\_\_\_\_  
DATE 5/12/06

DRAWN BY SUTHEARD  
CHECKED BY BOTT

COMPUTER FILE NO. 02157SPL  
PROJECT 02157  
5/23/06-MDS

GREENE & BRADFORD, INC.  
CONSULTING ENGINEERS  
1001 N. WASHINGTON ST., SUITE 200  
SPRINGFIELD, ILLINOIS 62761-1001  
TEL: 217-223-8800 FAX: 217-223-8801  
WWW.GREENE-AND-BRADFORD.COM