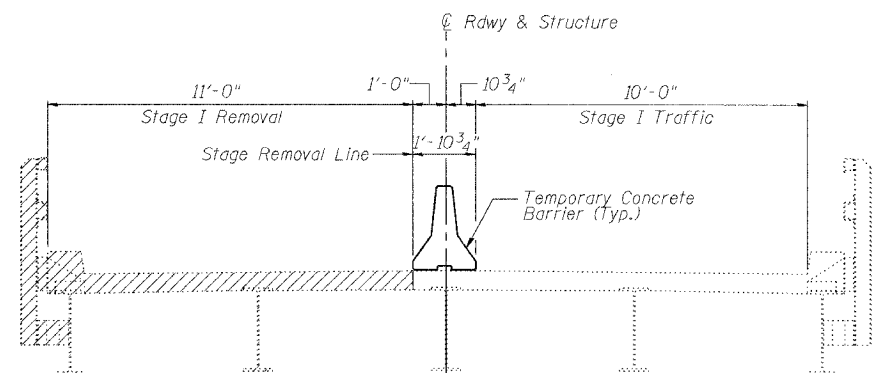


STATE OF ILLINOIS
DEPARTMENT OF TRANSPORTATION

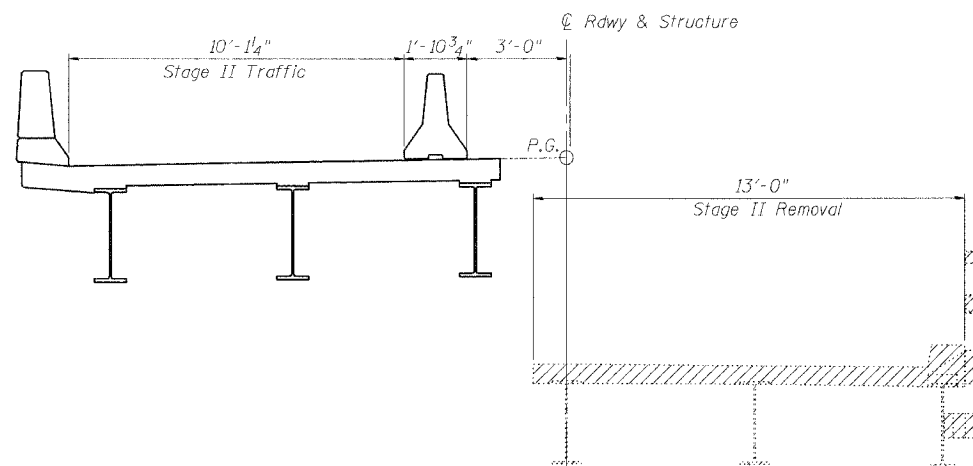
ROUTE NO.	SECTION	COUNTY	TOTAL SHEETS	SHEET NO.
FAS 583	#	SCHUYLER	56	22
FED. ROAD DIST. NO.		ALIGNMENT	FED. AID PROJECT-	

SHEET NO. 3
26 SHEETS

* 02-00067-00-BR
Contract #

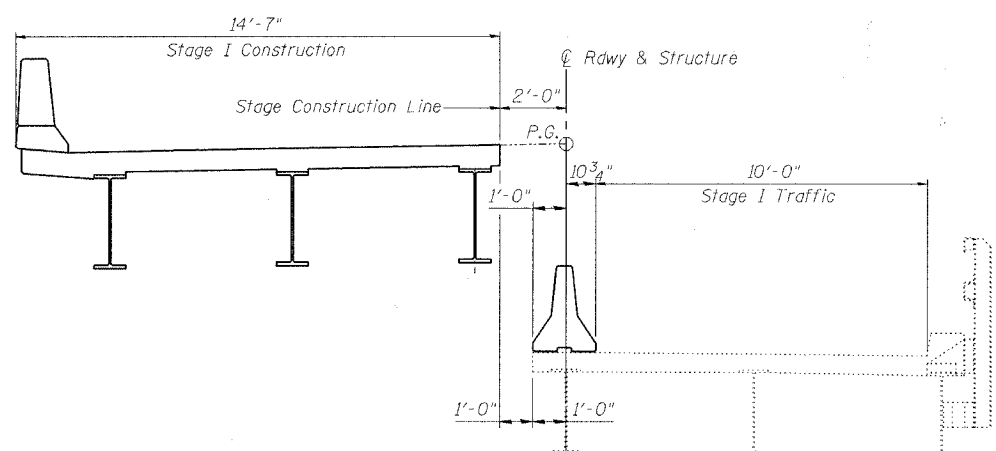


STAGE I REMOVAL
Looking East

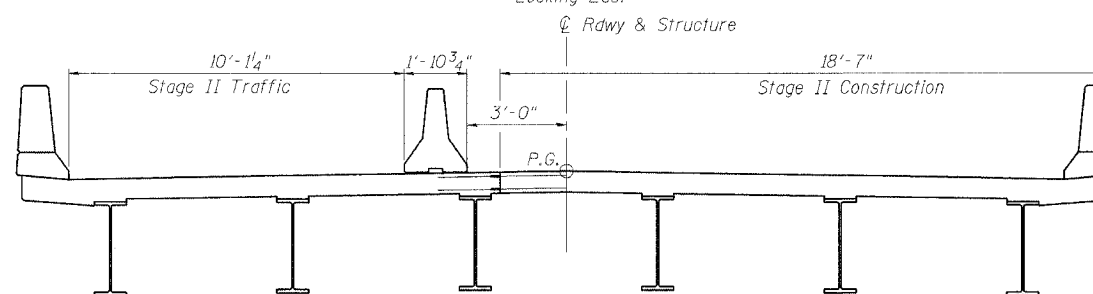


STAGE II REMOVAL
Looking East

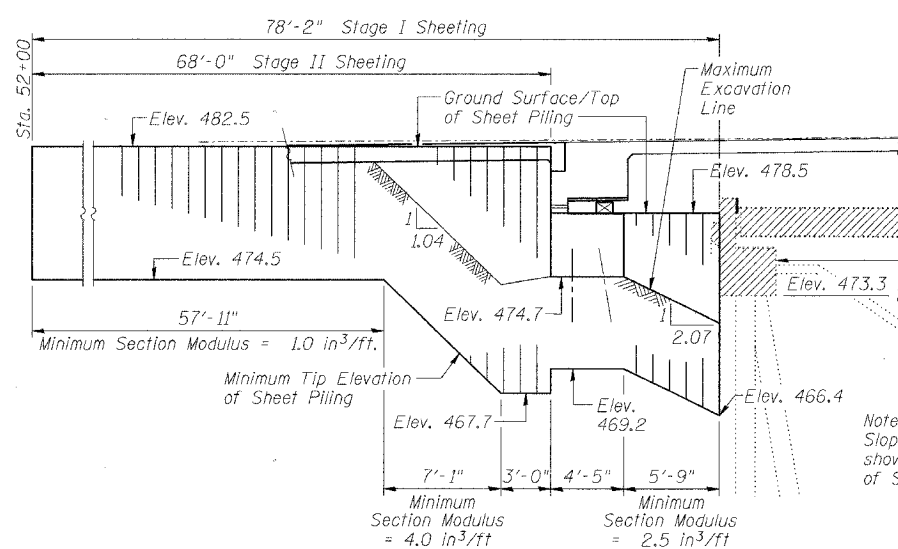
Notes:
All cross sections are looking East.
For quantity of Temporary Concrete Barriers, see Roadway Plans.
Hatched areas indicate Removal of Existing Structures.



STAGE I CONSTRUCTION

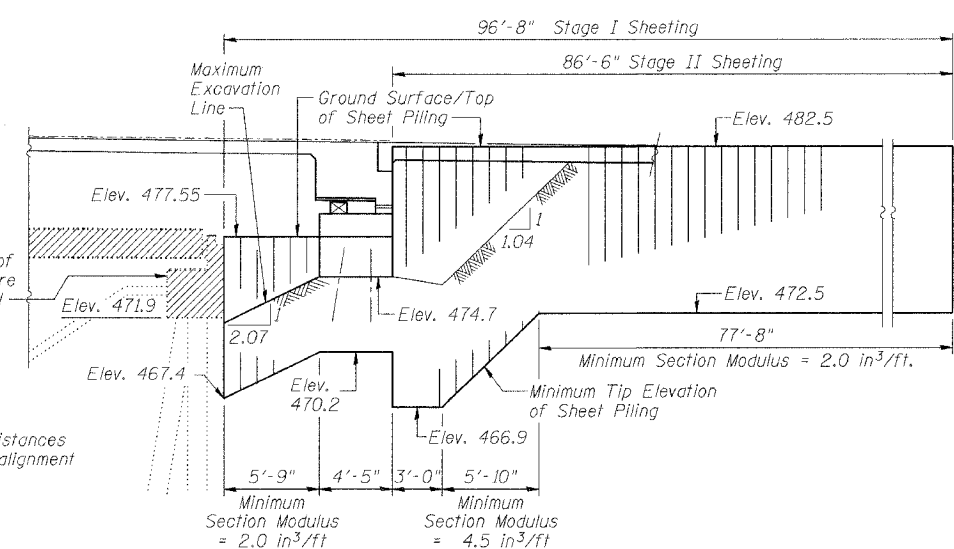


STAGE II CONSTRUCTION



WEST ABUTMENT

Note:
Slopes and distances shown along alignment of Sheeting



EAST ABUTMENT

TEMPORARY SHEET PILING

FILE NAME = F:\2015\17\Drawings\SN085-3054\SN0853054_STG.dgn
DATE = 6/7/06
PLOT DATE = 6/7/06
PLOT TIME = 7:45:30 AM
OPERATOR = nichellel

REVISIONS	
NAME	DATE

ILLINOIS DEPARTMENT OF TRANSPORTATION
STAGE CONSTRUCTION DETAILS

FAS 583 (CHS) OVER LAMOINE RIVER
SECTION 02-00067-00-BR
SCHUYLER COUNTY
STATION 54+95.75
S.N. 085-3054

SCALE: VERT.
HORIZ.
DATE: 6/7/05

DRAWN BY: LANDREY
DESIGNED BY: MATHUR
CHECKED BY: TRELLO

GREENE & BRADFORD, INC.
CONSULTING ENGINEERS
PROFESSIONAL ENGINEERS
REGISTERED IN ILLINOIS
1215 W. 84th Street, Suite 202, Moline, IL 61704-2020
PH: 314-271-1100 FAX: 314-271-1101
WWW.GREENE-AND-BRADFORD.COM

COMPUTER FILE NO.
SN0853054_STG
PROJECT 02157
6/2/06-MML