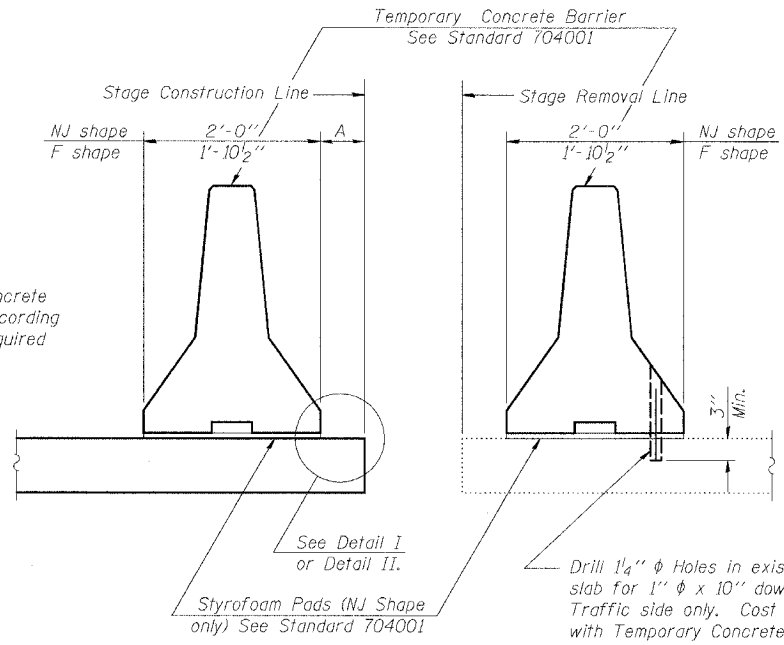


STATE OF ILLINOIS
DEPARTMENT OF TRANSPORTATION

ROUTE NO.	SECTION	COUNTY	SHEET NO.	SHEET NO.
FAS 583	#	SCHUYLER	56	23
FED. ROAD DIST. NO.		ILLINOIS	FED. AID PROJECT	

* 02-00067-00-BR
Contract #

SHEET NO. 4
26 SHEETS



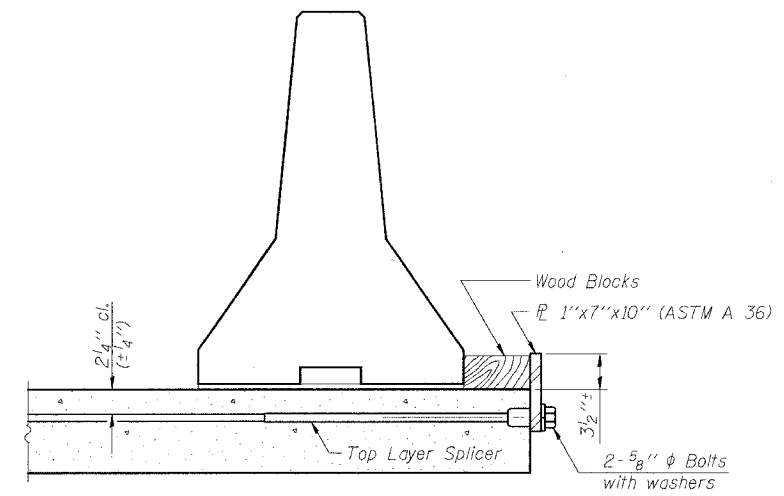
When "A" is 3'-6" or less, the temporary concrete barrier shall be anchored to the new slab according to Detail I or Detail II. No anchorage is required when "A" is greater than 3'-6".

NEW SLAB EXISTING SLAB

SECTIONS THRU SLAB

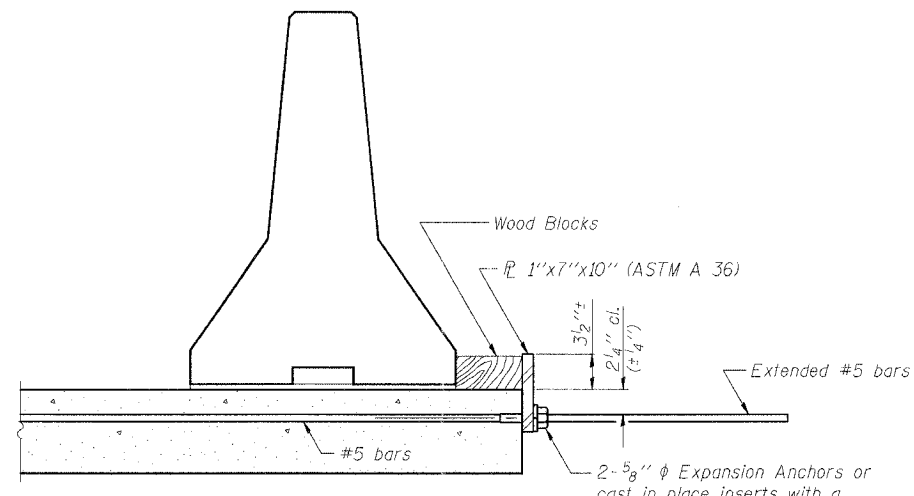
NOTES

- Detail I - With Bar Splicer or Couplers:
Connect one (1) 1"x7"x10" steel P to the top layer of couplers with 2-5/8" φ bolts screwed to coupler at approximate C of each barrier panel.
 - Detail II - With Extended Reinforcement Bars:
Connect one (1) 1"x7"x10" steel P to the concrete slab with 2-5/8" φ Expansion Anchors or cast in place inserts spaced between the top layer of reinforcement at approximate C of each barrier panel.
- Cost of anchorage is included with Temporary Concrete Barrier.



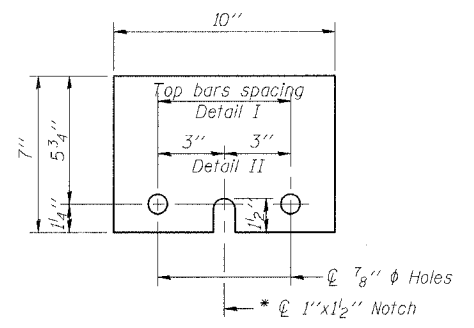
DETAIL I

The 1"x7"x10" Plate shall not be removed until Stage II Construction forms and reinforcement bars are in place.



DETAIL II

The 1"x7"x10" Plate shall not be removed until Stage II Construction forms and all reinforcement bars are in place and the concrete is ready to be placed.



1'x7'x10"

* Required only with Detail II

REVISIONS	
NAME	DATE

ILLINOIS DEPARTMENT OF TRANSPORTATION
TEMPORARY CONCRETE BARRIER FOR STAGE CONSTRUCTION
FAS 583 (CH5) OVER LAMOINE RIVER
SECTION 02-00067-00-BR
SCHUYLER COUNTY
STATION 54+95.75
S.N. 085-3054

SCALE: VERT. HORIZ. DATE: 6/7/05

DRAWN BY: LANDREY
DESIGNED BY: MATHUR
CHECKED BY: TRELLO

GREENE & BRADFORD, INC.
CONSULTING ENGINEERS
PROFESSIONAL ENGINEERS
REGISTERED IN ILLINOIS
4201 793 8946 (773) 793 8227 (T) FAX: 773 793 8946

COMPUTER FILE NO. SN0853054.TCB
PROJECT 02157
6/2/06-MML

FILE NAME = I:\02157\Drawings\SN085-3054\SN0853054.TCB.dgn
DATE = 6/10/06
PLOT DATE = 6/10/06
PLOT TIME = 7:45:32 AM
OPERATOR = michaell

R-27

10-22-04