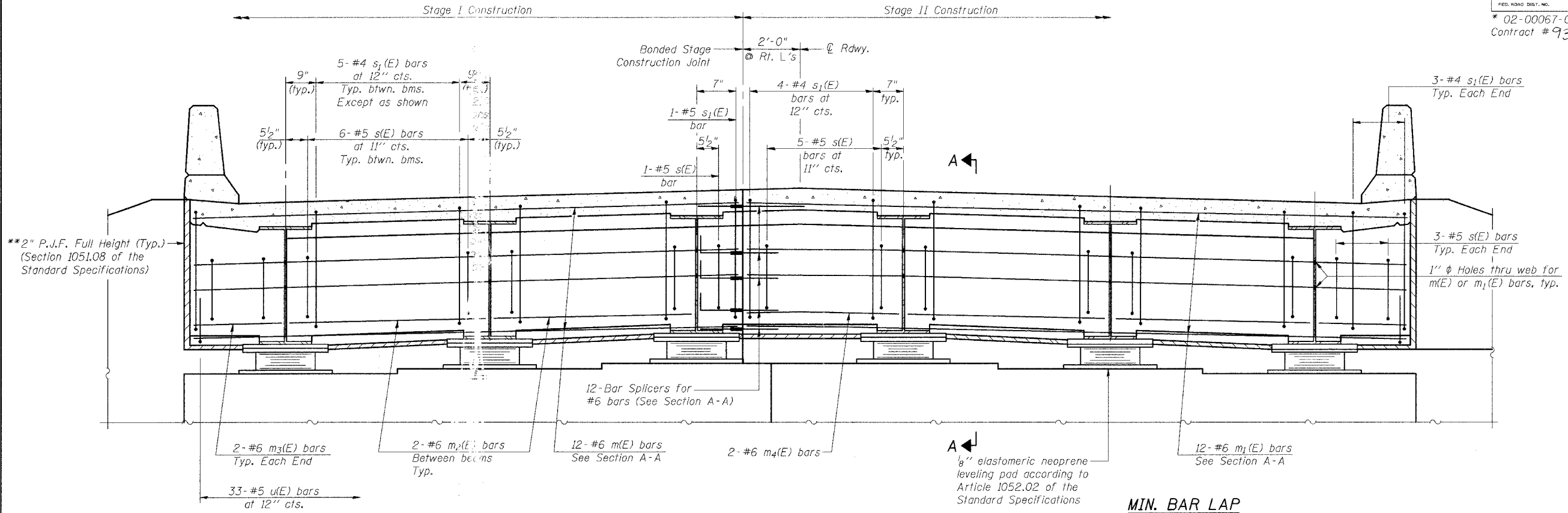


STATE OF ILLINOIS  
DEPARTMENT OF TRANSPORTATION

ROUTE NO.	SECTION	COUNTY	TOTAL SHEETS	SHEET NO.	SHEET NO. 11
FAS 583	*	SCHUYLER	56	30	26 SHEETS
FED. ROAD DIST. NO.	ILL. DIST.	FED. AID PROJECT			

\* 02-00067-00-BR  
Contract # 93425



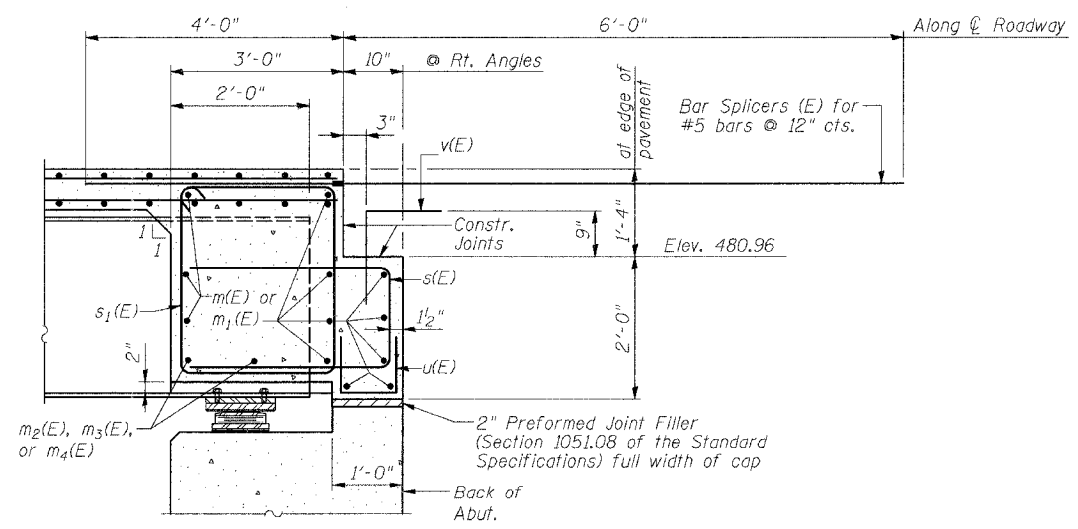
**DIAPHRAGM ELEVATION AT EAST ABUTMENT**

(Looking East)  
(West Abutment similar)

**MIN. BAR LAP**  
#5 bar = 1'-8"  
#6 bar = 2'-9"

\*\*Provide items ② ③ & ④ as shown in Section thru Semi-Integral Abutment on Sheet 2 of 26 behind 2" P.J.F. which separates the abutment diaphragm from the wingwall. Cost included with Concrete Superstructure.

Notes:  
Reinforcement bars in diaphragm are billed with superstructure on sheet 10 of 26.  
Concrete in diaphragm is included with Concrete Superstructure on sheet 10 of 26.  
For details of bars s(E) & s1(E) see sheet 10 of 26.  
The s(E) and s1(E) bars shall be placed parallel to the beams. Spacing for these bars are shown at right angles to the beams.  
For anchor bolt details see sheet 20 of 26.



**SECTION A-A**

REVISIONS	
NAME	DATE

ILLINOIS DEPARTMENT OF TRANSPORTATION  
**DIAPHRAGM DETAILS**  
FAS 583 (CH5) OVER LAMOINE RIVER  
SECTION 02-00067-00-BR  
SCHUYLER COUNTY  
STATION 54+95.75  
S.N. 085-3054

SCALE: VERT. \_\_\_\_\_  
HORIZ. \_\_\_\_\_  
DATE: 6/7/05

DRAWN BY: LANDREY  
DESIGNED BY: MATHUR  
CHECKED BY: TRELLO

GREENE & BRADFORD, INC.  
OF SPRINGFIELD

COMPUTER FILE NO.  
SN0853054\_DD

PROJECT 02157  
9/25/06-NMIL

FILE NAME = I:\02157\DRAWINGS\SN085-3054\SN0853054\_DD.dgn  
PLOT SCALE = 0.10000  
PLOT DATE = 9/25/2006  
PLOT TIME = 3:55:00 PM  
OPERATOR = mschell@