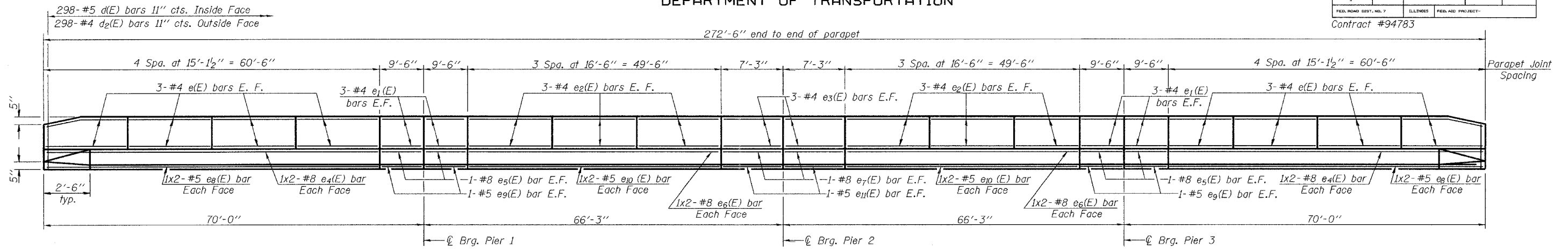


STATE OF ILLINOIS
DEPARTMENT OF TRANSPORTATION

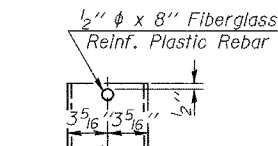
| | | | | | |
|-----------------------|----------|-------------------|-----------------|-------|-------------|
| ROUTE NO. | SECTION | COUNTY | SHEETS | SHEET | SHEET NO. 7 |
| S.B.I. 1 | (8C)B-2 | WABASH | 36 | 18 | 21 SHEETS |
| FED. ROAD DIST. NO. 7 | ILLINOIS | FED. AID PROJECT- | Contract #94783 | | |



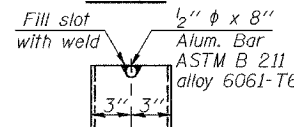
INSIDE ELEVATION OF PARAPET

MIN. BAR LAPS

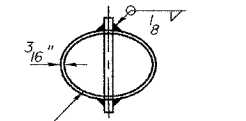
#5 bar = 1'-8"
#8 bar = 3'-5"



FIBERGLASS PIPE



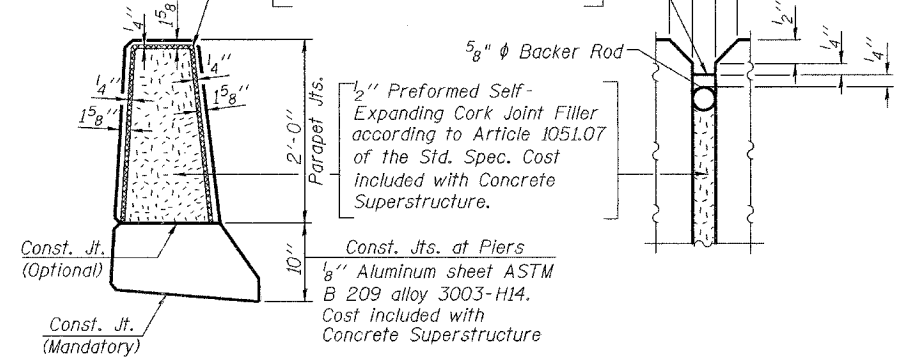
ALUMINUM TUBE



TOP PLAN

6" O.D. Aluminum Tube alloy 6061-T6 or 6" ϕ Fiberglass Pipe (Showing Aluminum Tube)

Non-staining gray one component non-sag elastomeric gun grade polyurethane sealant meeting the requirements of ASTM C-920, Type S, Grade NS, Class 25, Use T.



PARAPET JOINT DETAILS

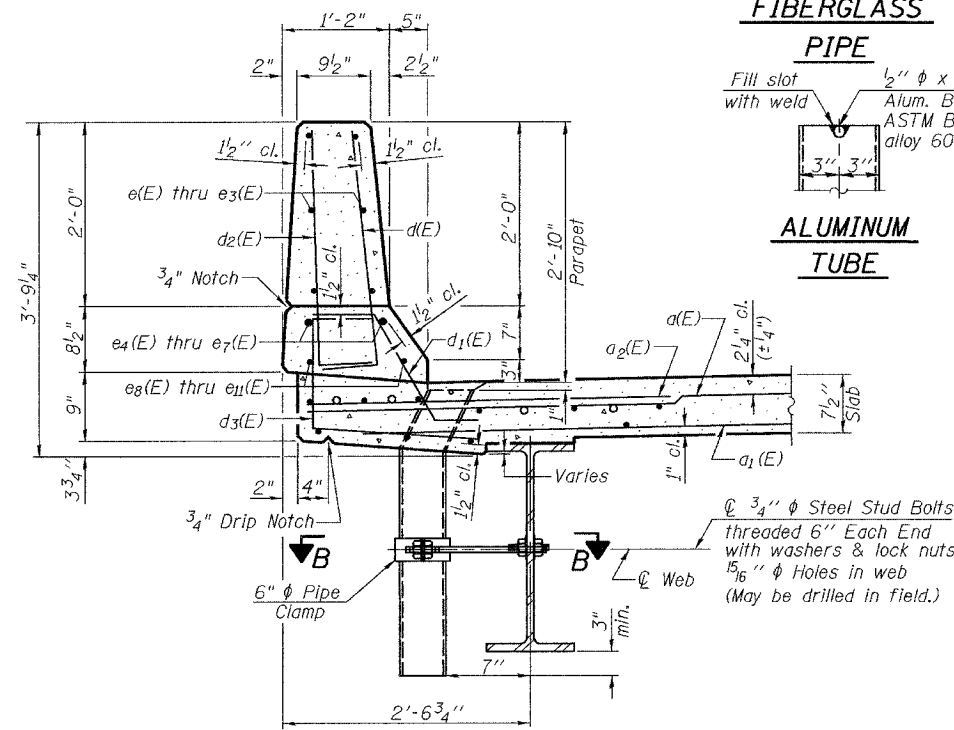
Notes: Floor drains need not be painted.
Fiberglass pipe shall conform to ASTM D 2996, with short-time rupture strength hoop tensile stress of 30,000 p.s.i. minimum.

SUPERSTRUCTURE
BILL OF MATERIAL

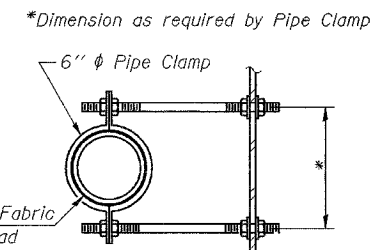
| Bar | No. | Size | Length | Shape |
|---------------------------------|-----|----------|---------|-------|
| a(E) | 409 | #5 | 30'-6" | — |
| a1(E) | 328 | #5 | 29'-1" | — |
| a2(E) | 818 | #6 | 6'-0" | — |
| b(E) | 238 | #5 | 40'-4" | — |
| b1(E) | 62 | #6 | 39'-5" | — |
| b2(E) | 248 | #5 | 35'-6" | — |
| b3(E) | 31 | #6 | 31'-8" | — |
| d(E) | 596 | #5 | 3'-0" | — |
| d1(E) | 584 | #5 | 2'-5" | — |
| d2(E) | 596 | #4 | 3'-0" | — |
| d3(E) | 596 | #4 | 3'-4" | — |
| d4(E) | 12 | #4 | 2'-2" | — |
| e(E) | 96 | #4 | 14'-10" | — |
| e1(E) | 48 | #4 | 9'-3" | — |
| e2(E) | 72 | #4 | 16'-3" | — |
| e3(E) | 24 | #4 | 7'-0" | — |
| e4(E) | 16 | #8 | 32'-0" | — |
| e5(E) | 16 | #8 | 9'-3" | — |
| e6(E) | 16 | #8 | 26'-6" | — |
| e7(E) | 8 | #8 | 7'-0" | — |
| e8(E) | 16 | #5 | 31'-0" | — |
| e9(E) | 16 | #5 | 9'-3" | — |
| e10(E) | 16 | #5 | 25'-6" | — |
| e11(E) | 8 | #5 | 7'-0" | — |
| m(E) | 4 | #6 | 29'-4" | — |
| m1(E) | 6 | #6 | 30'-10" | — |
| m2(E) | 24 | #6 | 7'-6" | — |
| m3(E) | 10 | #6 | 4'-10" | — |
| m4(E) | 4 | #6 | 2'-3" | — |
| s(E) | 72 | #5 | 6'-10" | — |
| s1(E) | 62 | #4 | 8'-10" | — |
| v(E) | 60 | #5 | 3'-8" | — |
| Reinforcement Bars Epoxy Coated | | Pound | 68810 | |
| Concrete Superstructure | | Cu. Yds. | 279.1 | |

Reinforcement bars designated (E) shall be epoxy coated.
Bars indicated thus 1 x 2-#5 etc. indicates 1 line of bars with 2 lengths per line.

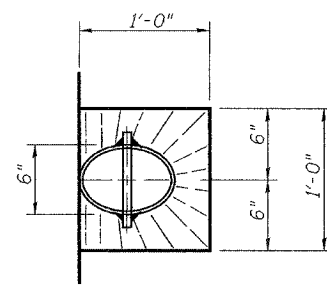
SUPERSTRUCTURE DETAILS
S.B.I. RT. 1 SEC. (8C)B-2
WABASH COUNTY
STATION 204+42.25
STRUCTURE No. 093-0022



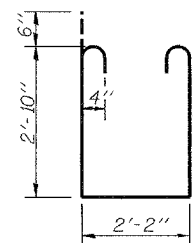
SECTION THRU PARAPET



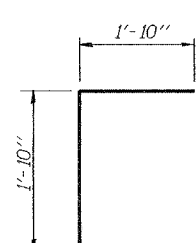
SECTION B-B



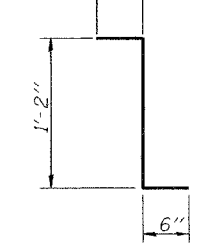
TOP PLAN (Showing Tube Section) (West Parapet)



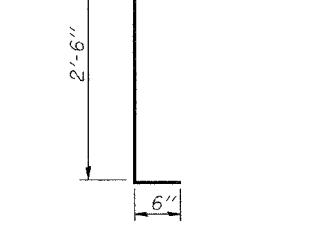
BAR s1(E)



BAR v(E)



BAR d4(E)



BARS d(E) & d2(E)

| | |
|----------|-----------------|
| DESIGNED | Dewey Coultas |
| CHECKED | Chi Cheung Chau |
| DRAWN | R. Sommer |
| CHECKED | D.H.C./C.C.C. |

| | | |
|----------|-------------------|---------------------|
| EXAMINED | September 18 2006 | Thomas J. Domagalak |
| PASSED | | Ralph E. Anderson |