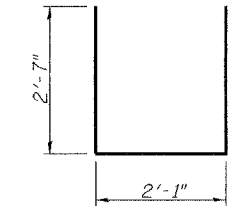
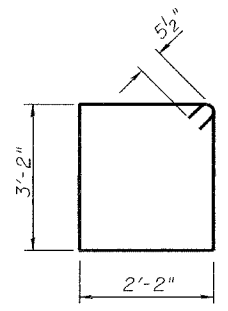
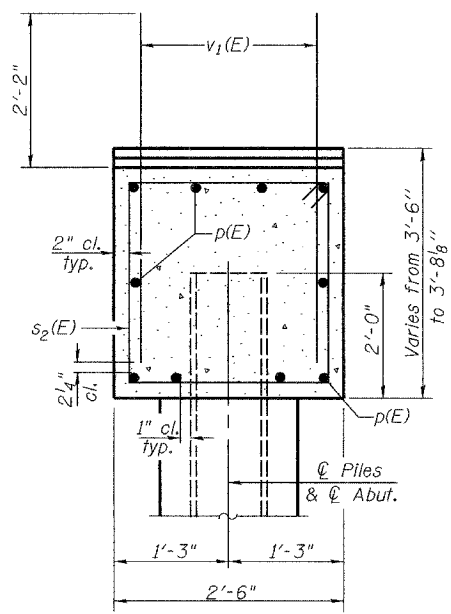
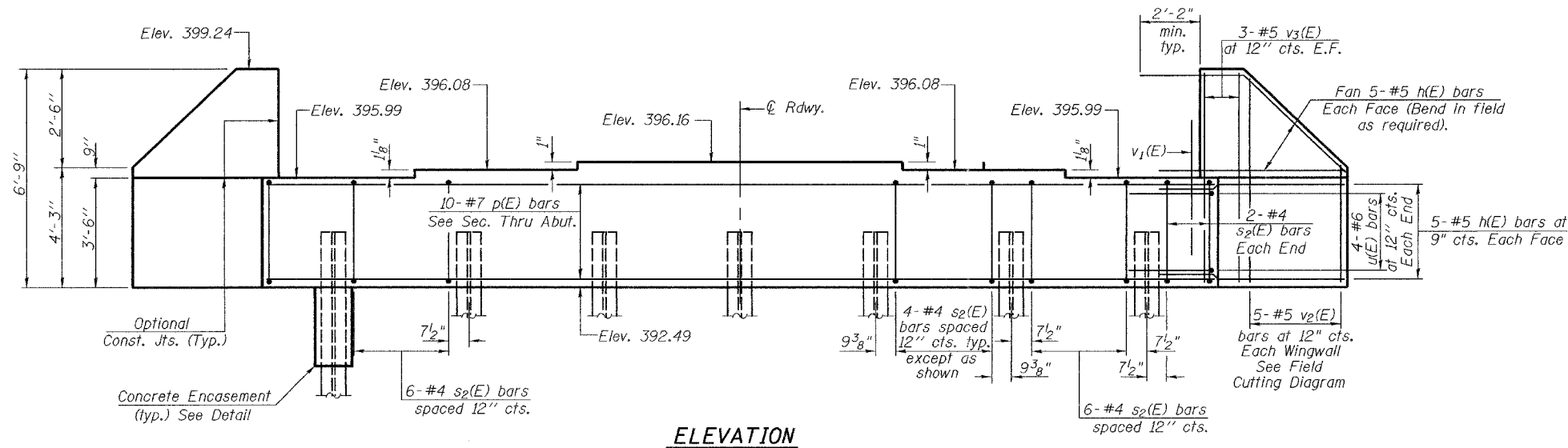


STATE OF ILLINOIS
DEPARTMENT OF TRANSPORTATION

ROUTE NO.	SECTION	COUNTY	TOTAL SHEETS	SHEET NO.
S.B.I. 1	(BC)B-2	WABASH	36	24
FED. ROAD DIST. NO. 7	ILLINOIS	FED. AID PROJECT		

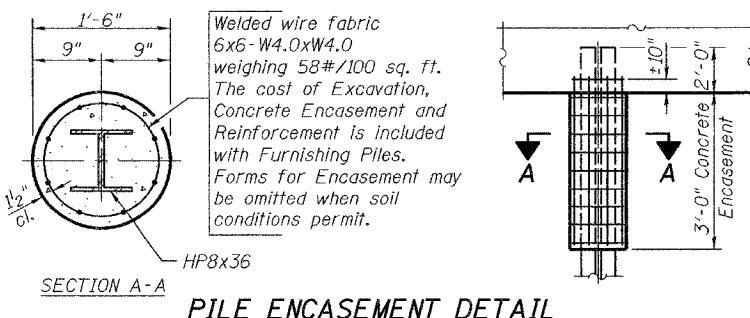
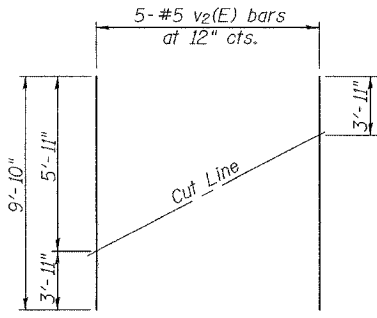
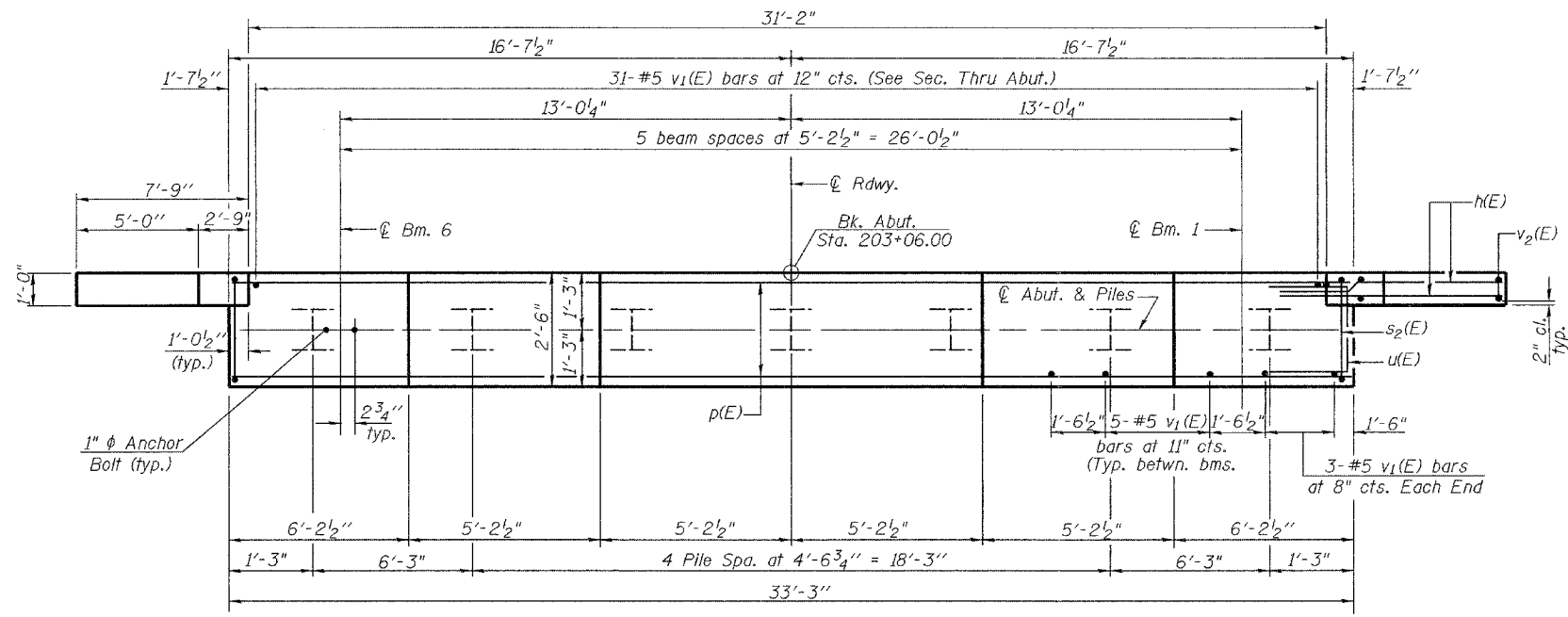
Contract #94783

Notes:
Pour steps monolithically with cap.
Reinforcement bars designated (E) shall be epoxy coated.
Space reinforcement in cap to miss anchor bolts.
For anchor bolt installation details see sheet 12 of 21.
For bar splicer details see sheet 11 of 21.



BILL OF MATERIAL

Bar No.	Size	Length	Shape
h(E)	40 #5	10'-4"	—
p(E)	10 #7	32'-11"	—
s ₂ (E)	32 #4	11'-7"	□
u(E)	8 #6	7'-3"	□
v ₁ (E)	62 #5	4'-4"	—
v ₂ (E)	10 #5	9'-10"	—
v ₃ (E)	12 #5	6'-5"	—
Concrete Structures	Cu. Yd.	14.2	
Reinforcement Bars, Epoxy Coated	Pound	1900	
Furnishing Steel Piles HP8x36	Foot	427	
Driving Piles	Foot	427	
Structure Excavation	Cu. Yd.	117.2	



PILE DATA

Type: Friction HP8x36
 Nominal Required Bearing: 239 kips
 Factored Resistance Available: 119.5 kips
 Est. Length: 61'
 No. Required: 7

Notes: Precore 1' φ hole to Elev. 372.6 before driving piles. Backfill with dry sand. Cost included with Driving Piles. Do not over drive piles.

DESIGNED	Dewey Coultas
CHECKED	Chi Cheung Chau
DRAWN	R. Sommer
CHECKED	D.H.C./C.C.C.

September 18 2006

EXAMINED *Thomas J. Domagalaki*
 ENGINEER OF BRIDGE DESIGN

PASSED *Ralph E. Anderson*
 ENGINEER OF BRIDGES AND STRUCTURES

WEST ABUTMENT
 S.B.I. RT. 1 SEC. (BC)B-2
 WABASH COUNTY
 STATION 204+42.25
 STRUCTURE No. 093-0022