

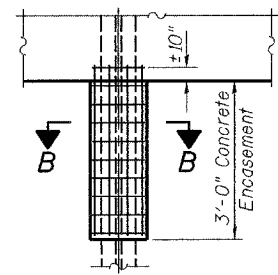
STATE OF ILLINOIS  
DEPARTMENT OF TRANSPORTATION

ROUTE NO.	SECTION	COUNTY	TOTAL SHEETS	SHEET NO.
S.B.I. 1	(8C)B-2	WABASH	36	28
FED. ROAD DIST. NO. 7	ILLINOIS	FED. AID PROJECT-		

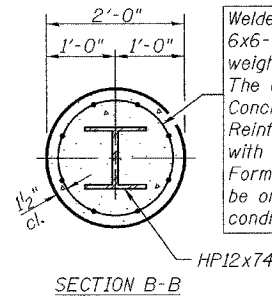
Contract #94783

**PILE DATA**

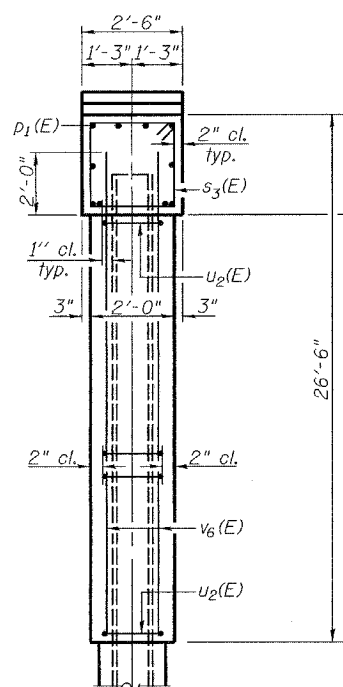
Type: Steel HP12x74  
Nominal Req'd. Bearing: 458 kips  
Factored Resistance Available: 229 kips  
Est. Length: 60'  
No. Required: 5 +1 Test Pile



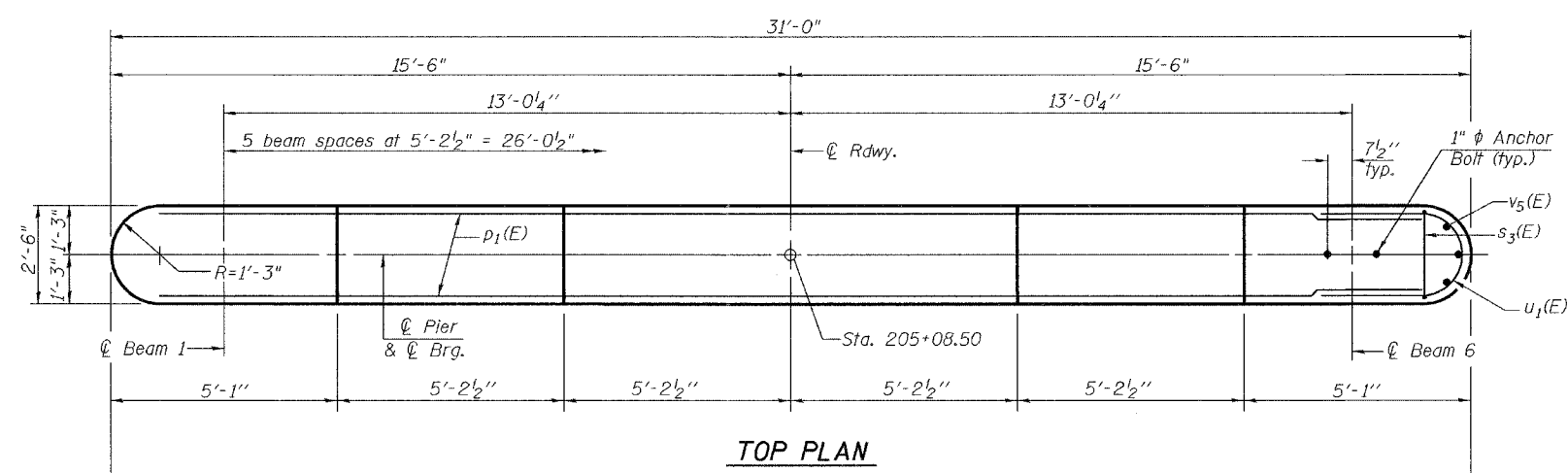
Welded wire fabric 6x6-W4.0xW4.0 weighing 58#/100 sq. ft. The cost of Excavation, Concrete Encasement and Reinforcement is included with Furnishing Piles. Forms for Encasement may be omitted when soil conditions permit.



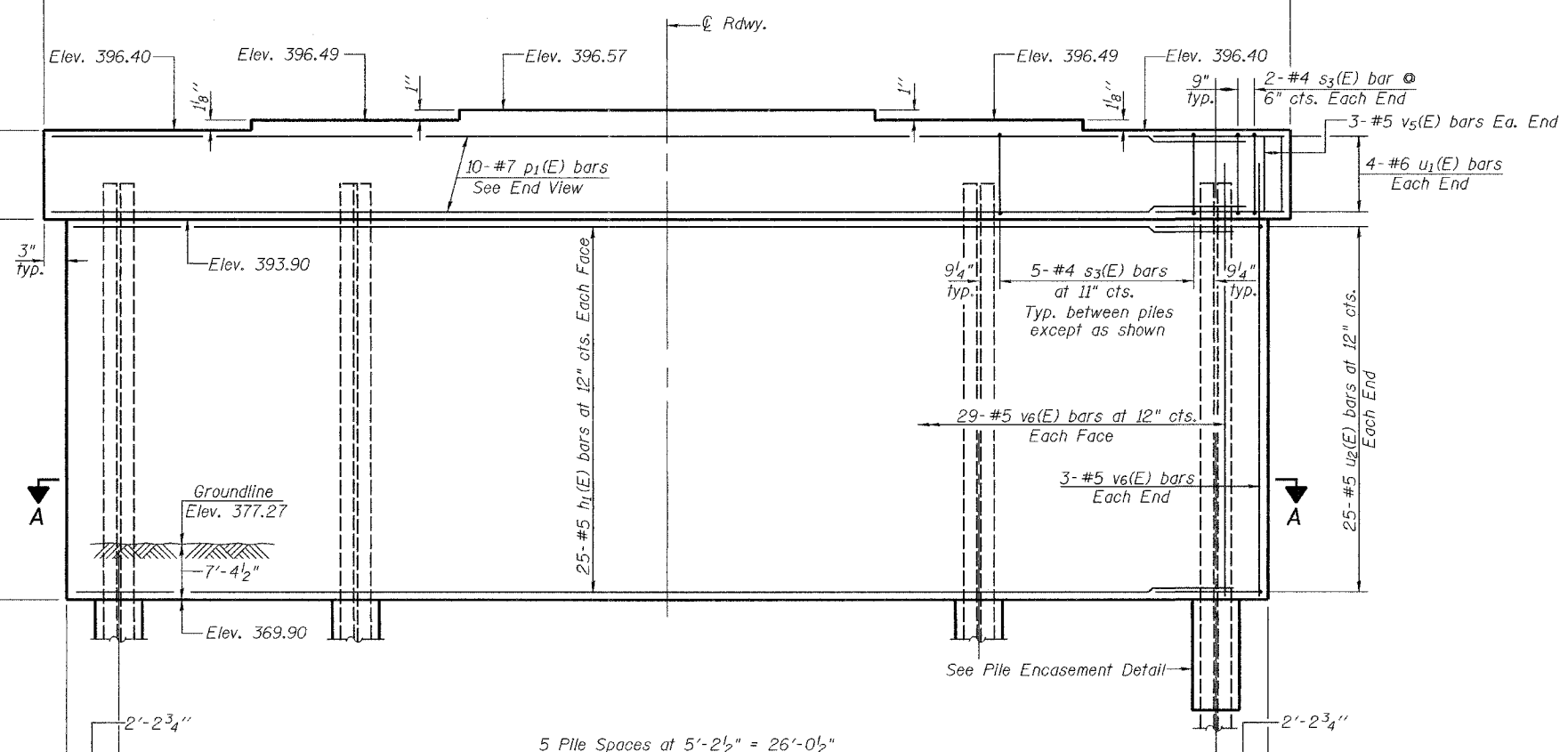
**PILE ENCASUREMENT DETAILS**



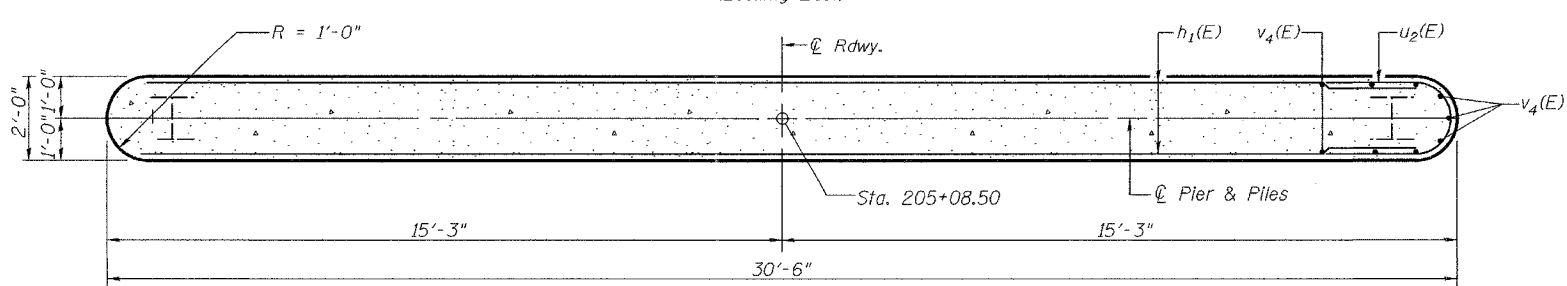
**END VIEW**



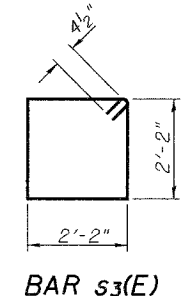
**TOP PLAN**



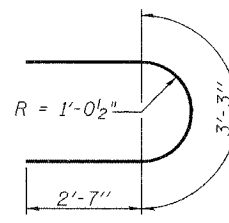
**ELEVATION**  
(Looking East)



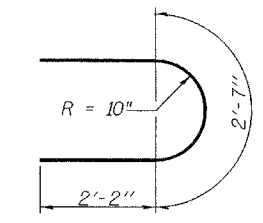
**SECTION A-A**



**BAR s3(E)**



**BAR u1(E)**



**BAR u2(E)**

**BILL OF MATERIAL**

Bar	No.	Size	Length	Shape
h1(E)	50	#5	28'-6"	—
p1(E)	10	#7	28'-6"	—
s3(E)	29	#4	9'-5"	□
u1(E)	8	#6	8'-5"	U
u2(E)	50	#5	6'-11"	U
v6(E)	64	#5	25'-10"	—
v5(E)	6	#5	2'-2"	—
Concrete Structures		Cu. Yd.	60.8	
Reinforcement Bars, Epoxy Coated		Pound	4450	
Furnishing Steel Piles HP12x74		Foot	300	
Structure Excavation		Cu. Yd.	54.4	
Test Pile Steel HP 12x74		Each	1	
Driving Piles		Foot	300	
Underwater Structure Excavation Protection Location 2		Each	1	

Notes:  
Pour steps monolithically with cap.  
Reinforcement bars designated (E) shall be epoxy coated.  
For anchor bolt installation details see sheet 12 of 21.  
Place Reinforcement bars in Cap to miss Anchor Bolts.

DESIGNED Dewey Coultas  
CHECKED Chi Cheung Chau  
DRAWN R. Sommer  
CHECKED D.H.C./C.C.C.

September 18 2006  
EXAMINED Thomas J. Domagalaki  
PASSED Ralph E. Anderson

**PIER 3**  
S.B.I. RT. 1 SEC. (8C)B-2  
WABASH COUNTY  
STATION 204+42.25  
STRUCTURE No. 093-0022