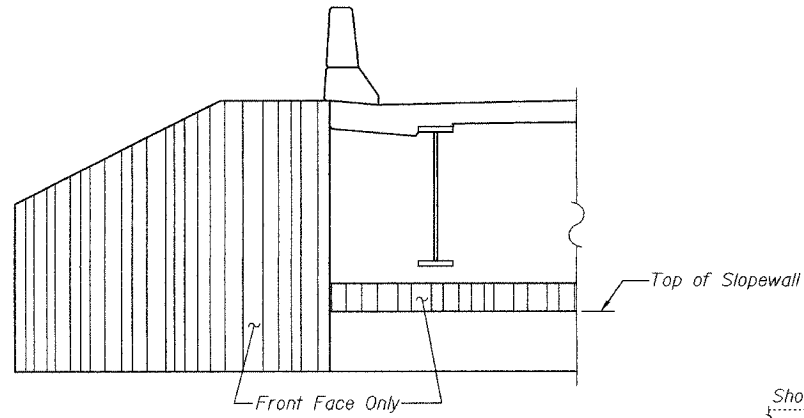


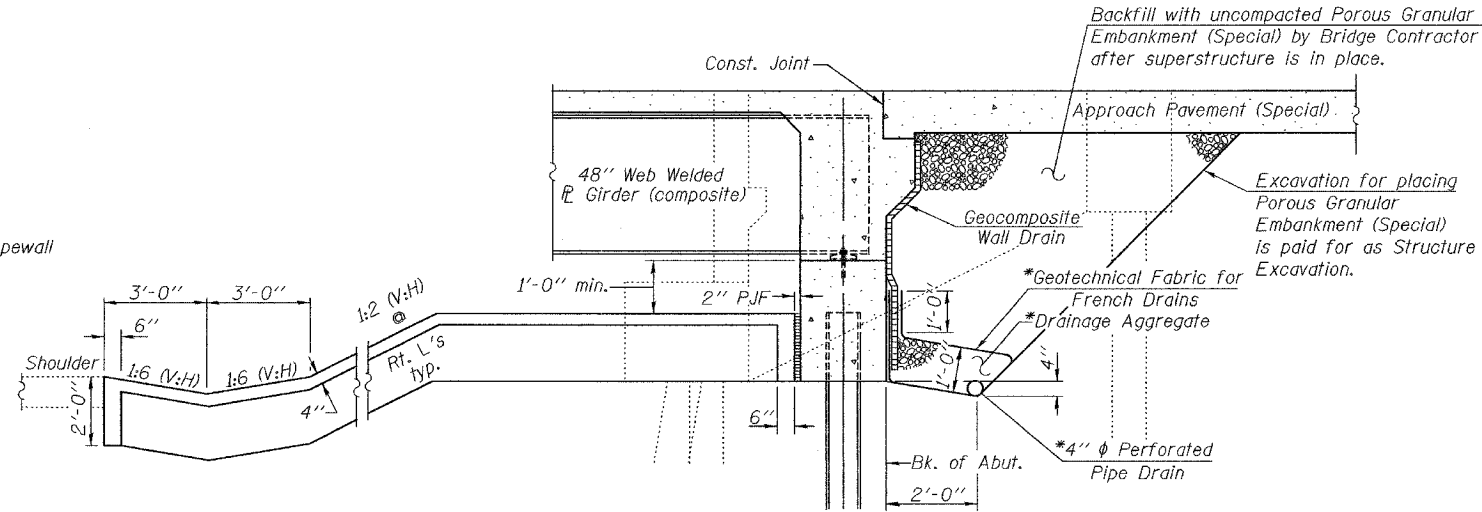
STATE OF ILLINOIS
DEPARTMENT OF TRANSPORTATION

ROUTE NO.	SECTION	COUNTY	SHEETS	SHEET NO.
F.A.I. 70	25-4HB-DB	EFFINGHAM	67	28
FED. ROAD DIST. NO. 7		ILLINOIS	FED. AID PROJECT	

Contract #94785



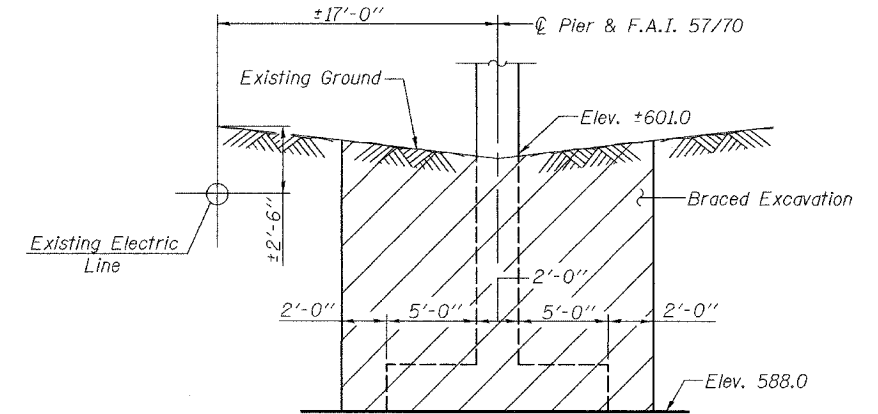
WINGWALL AND ABUTMENT CAP



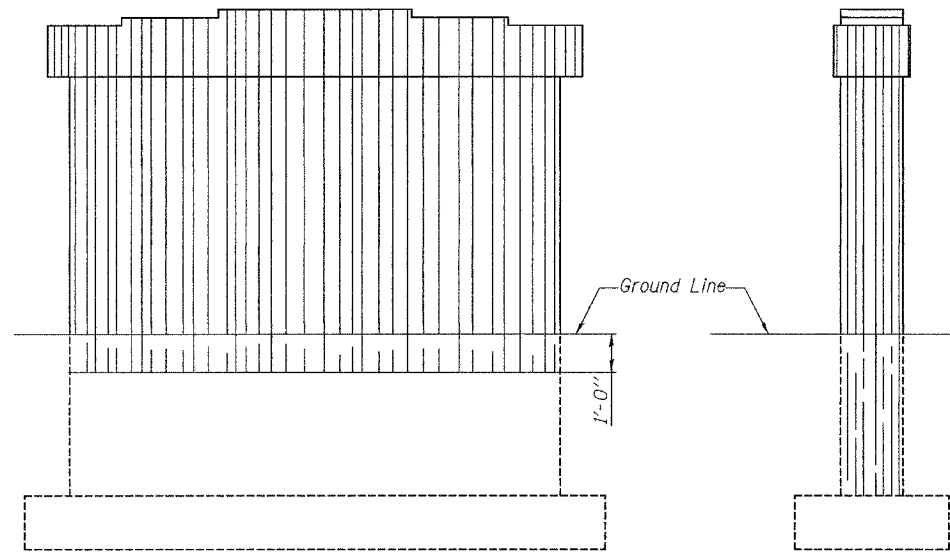
SECTION THRU INTEGRAL ABUTMENT
(Horiz. dim. @ Rt. L's)

*Included in the cost of Pipe Underdrains for Structures, 4".

Note:
All drainage system components shall extend to 2'-0" from the end of each wingwall except an outlet pipe shall extend until intersecting with the side slopes. The pipes shall drain into concrete headwalls. (See Article 601.05 of the Standard Specifications and Highway Standard 601101).



SECTION X-X

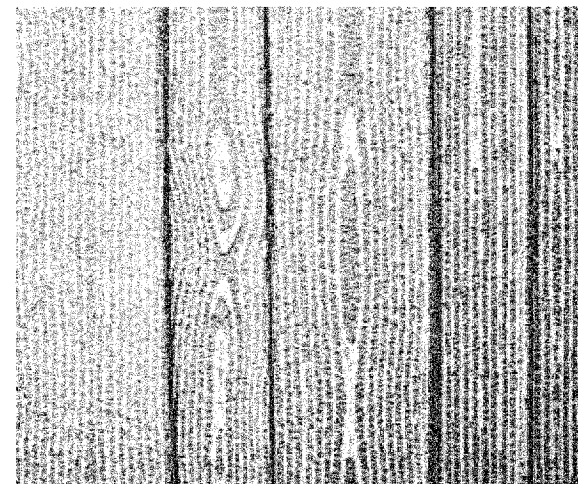


PIER

See sheet 15 of 18 for dimensions.

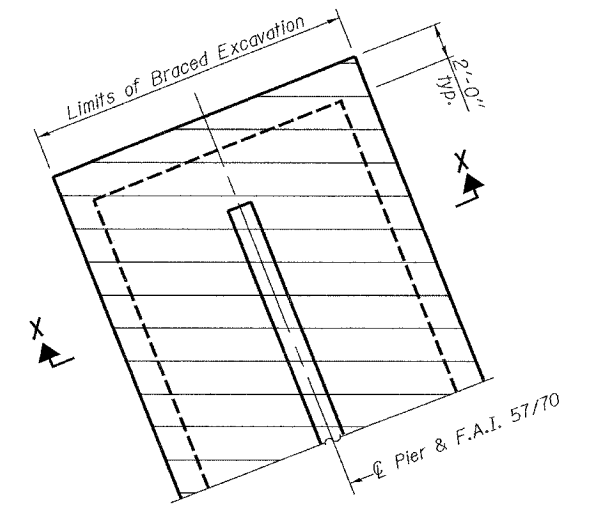
BOARDMARK TEXTURED SURFACE-DETAILS

Notes: Provide a boardmark concrete texture on the vertical faces of pier stem, pier cap, front face of the abutment caps, and the front face of the wingwalls. Wood grain shall imitate rough sawn cedar. Random board widths: 4" minimum; 12" maximum. Random board lengths: 10 ft. minimum 20 ft. maximum. Board thicknesses varying from 1/4" to 1" shall be used in a random pattern. Paid for as "Form Liner Textured Surface". See Special Provision.



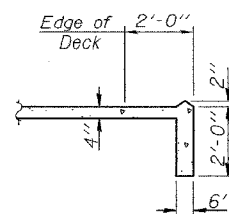
BOARDMARK CONCRETE

Wood Grain, Hi-Lo, Rough Sawn Cedar
Random Widths: Min. 4", Max. 12"
Random Lengths: Min. 10', Max. 20'.

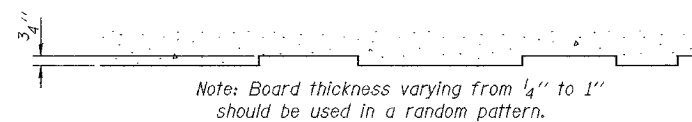


PLAN

BRACED EXCAVATION AT PIER-DETAIL



SECTION A-A



DESIGNED	Dhruv Narlewal
CHECKED	Steve Ryan
DRAWN	R. Sommer
CHECKED	DPN/SMR

September 28 2006
EXAMINED <i>Thomas J. Demagabki</i>
PASSED <i>Ralph E. Anderson</i>
ENGINEER OF BRIDGES AND STRUCTURES

GENERAL DETAILS
F.A.I. RT. 70 SEC. (25-4HB-DB)
EFFINGHAM COUNTY
STATION 49+98.84
STRUCTURE NO. 025-0102