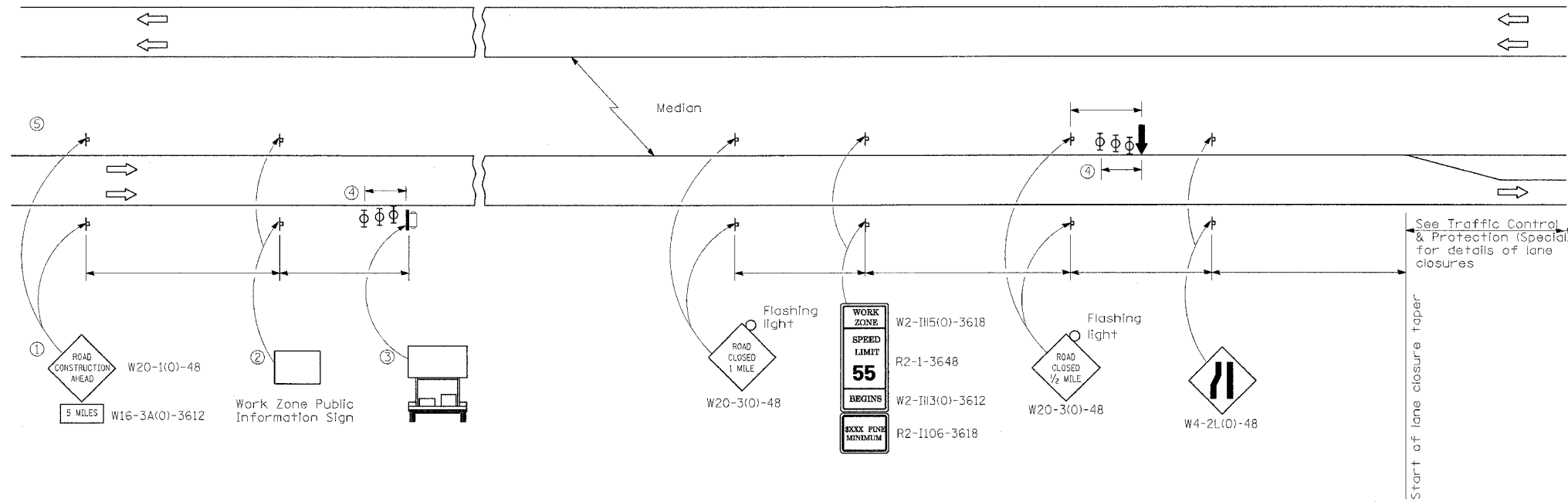


F.A.I. RTE.	SECTION	COUNTY	TOTAL SHEETS	SHEET NO.
•	I25-4 HB-1JB	EFFINGHAM	67	50
STA.		TO STA.		
FED. ROAD DIST. NO.	ILLINOIS	FED. AID PROJECT		

• FAI RTE. 57/70



**SYMBOLS**

- ↑ Arrow board
- ☐ Portable changeable message sign
- ⌄ Sign
- ⊕ Type II barricade, drum, or vertical barricade with monodirectional flashing light

- ① The Road Construction Ahead sign shall be located 5 miles in advance of the road closure.
- ② The message and size of the Work Zone Public Information Sign shall be as specified by the Department.
- ③ The message board shall be used to display status of lanes within the project. The primary messages shall be:  
"Road Closed 5 Miles" / "Follow Marked Detour" / "Expect Delays"
- ④ Three, Type II barricades, drums, or vertical barricades at 15 m (50') centers.
- ⑤ A Changeable Message Board shall also be placed 10 miles in advance of the road closure. The primary message shall be:  
"Night Work on I-57/70" / "10 Miles Ahead"

**GENERAL NOTES**

This standard shall be used in advance of the closure of FAI 57/70 at Effingham, IL.

All dimensions are in millimeters (Inches) unless otherwise shown.

PLOT DATE = 6/14/2006  
 FILE NAME = 871E1  
 PLOT SCALE = #SCALE#  
 USER NAME = dstrout

REVISIONS	
NAME	DATE

ILLINOIS DEPARTMENT OF TRANSPORTATION  
**APPROACH TO  
 LANE CLOSURE,  
 FREEWAY/EXPRESSWAY  
 STANDARD 701400-SPL**

SCALE: VERT. \_\_\_\_\_  
 HORIZ. \_\_\_\_\_

DATE \_\_\_\_\_ DRAWN BY \_\_\_\_\_  
 CHECKED BY \_\_\_\_\_