

ROUTE NO.	SECTION	CITY	TOTAL SHEETS	SHEET NO.
FAU 9835	02-00037-00-PV	GREENVILLE	25	15
FED. ROAD DIST. NO.		ILLINOIS	PROJECT M-5078 (6)	

**CONTRACT No 972 82**

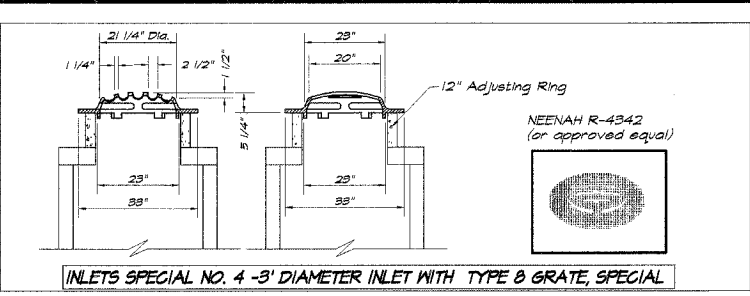
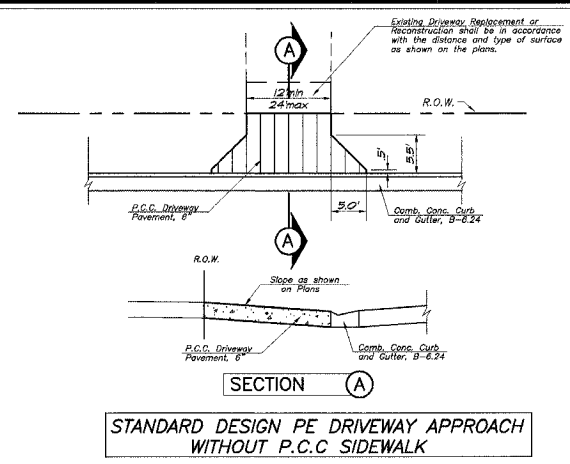
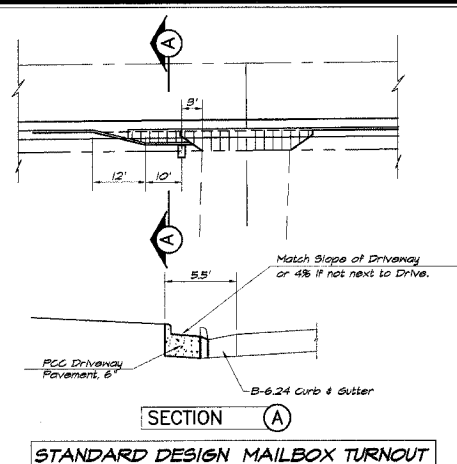
DESIGNED	SCALE	DATE	NO.	BY
MHP	as noted			
DRAWN	DATE			
Las Jenkins	Sept. 2004			
FIELD BOOK	JOB NO.			
XXX	CA-058A			

**BAINBRIDGE & ASSOCIATES, INC.**  
 Consulting Engineers  
 1670 SOUTH TAYLORVILLE ROAD  
 DECATUR, ILLINOIS  
 License 184-001256

**CITY OF GREENVILLE, ILLINOIS**  
 616 1/2 STREET IMPROVEMENTS  
 MISCELLANEOUS DETAILS

SEAL

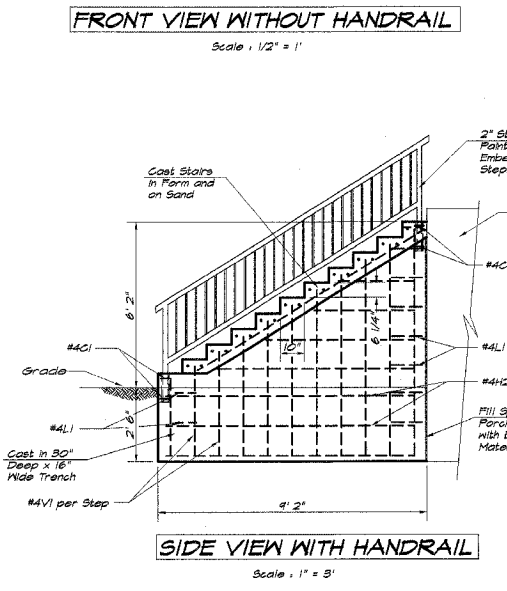
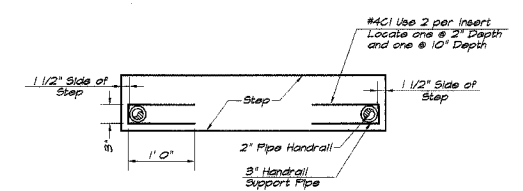
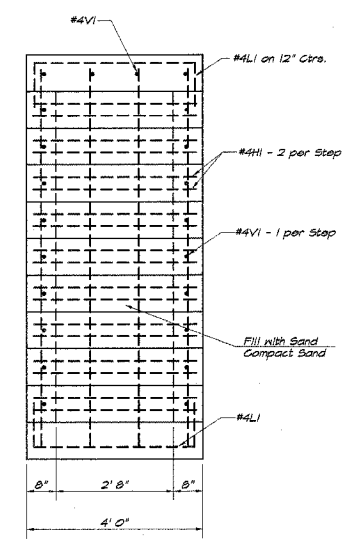
SHEET NO.  
**15**  
 OF  
 25



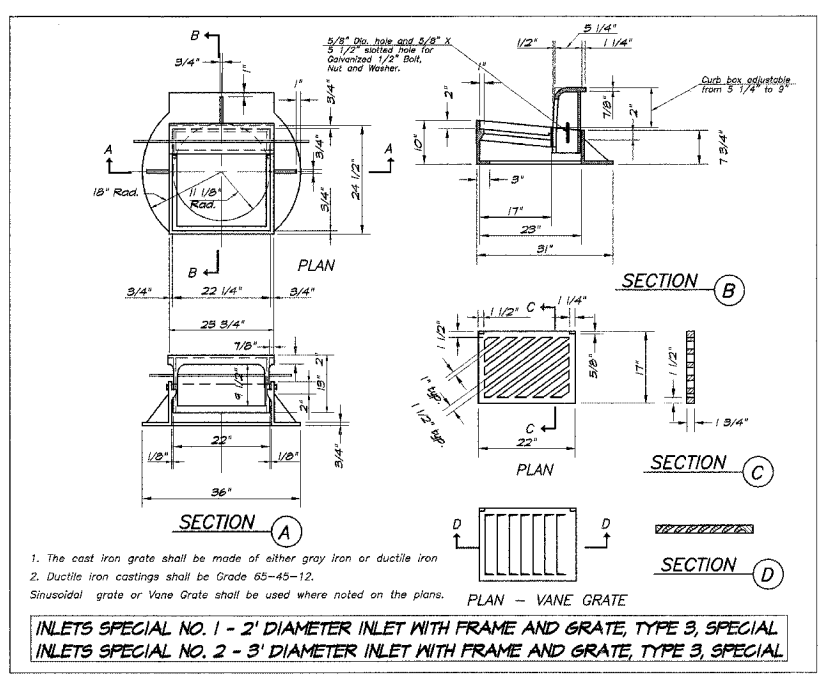
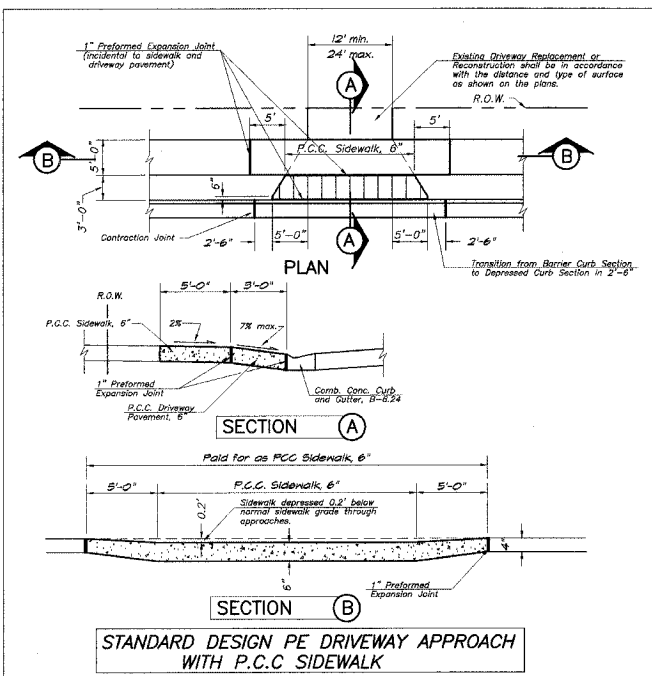
**RE-BAR QUANTITIES**

Bar Size	Number	Length	Shape	Weight
#4H	18	3' 6"		44
#4V	22	Varies		82
#4C	4	2' 3"	1/2"	12
#4L	9	4' 11"	1/2"	30
#4H2	18	Varies		82
#4H3	4	9' 1"		42
Total				242 lbs.
Concrete				Total = 4 Cu. Yd.

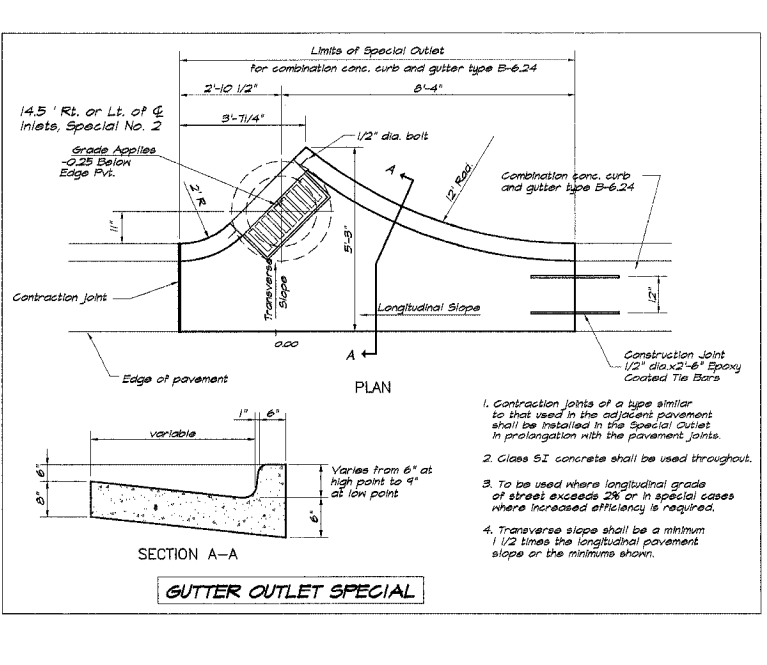
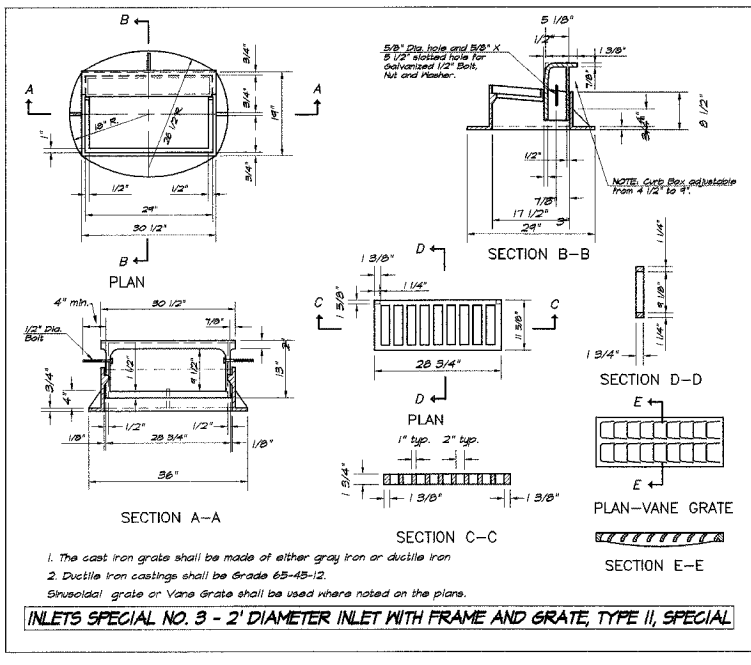
- NOTES:**
- Splices in reinforcing steel shall, where possible, be staggered. The minimum length shall not be less than 27" for No. 4. Provide 2" minimum bar clearance from edge of the concrete.
  - The reinforcement and concrete quantities are for estimation purposes only. The Contractor is required to verify quantities before bidding and construction.
  - Extend #4V Bars a minimum of 24" above the top of the trench and splice as necessary.
  - The trench shall be 12" wide.
  - The stair railing shall extend the full stair length and match the existing railing.
  - Grout shall be Sikadur 32, Hi-Mod or equivalent.
  - Paint handrail with 2 coats of Zinc Rich Primer and one coat of Black Vinyl Enamel.
  - Payment for the steps shall be at the Contract Unit Price per cubic yard for Concrete Structures (#50300225) and at the Contract Unit Price per pound for Reinforcement Bars (#50800105).
  - Payment for the railings shall be at the Contract Unit Price per foot for Pipe Handrail, Special (#51000305).



**STEP DETAIL - RT. 14+14.0**



**INLETS SPECIAL NO. 2 - 3' DIAMETER INLET WITH FRAME AND GRATE, TYPE 3, SPECIAL**



- Contraction joints of a type similar to that used in the adjacent pavement shall be installed in the Special Outlets in prolongation with the pavement joints.
- Class SI concrete shall be used throughout.
- To be used where longitudinal grade of street exceeds 2% or in special cases where increased efficiency is required.
- Transverse slope shall be a minimum 1/2 times the longitudinal pavement slope or the minimum shown.