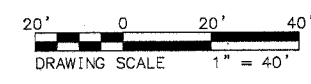
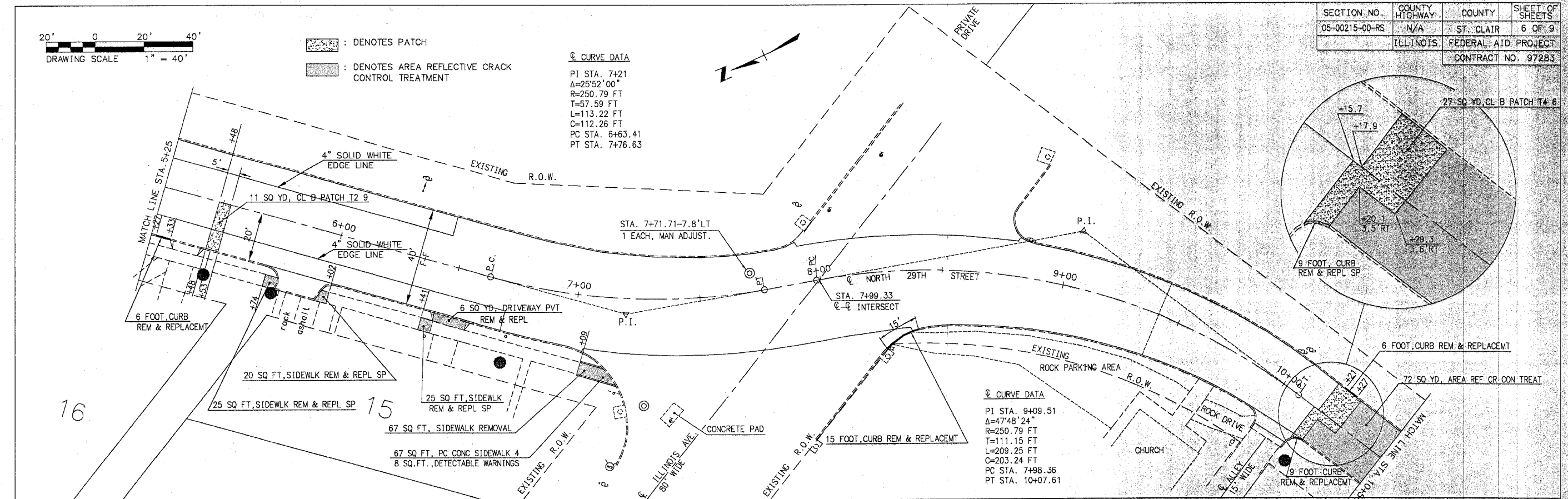


SECTION NO.	COUNTY HIGHWAY	COUNTY	SHEET OF SHEETS
05-00215-00-RS	N/A	ST. CLAIR	6 OF 9
		ILLINOIS	FEDERAL AID PROJECT
CONTRACT NO. 97283			



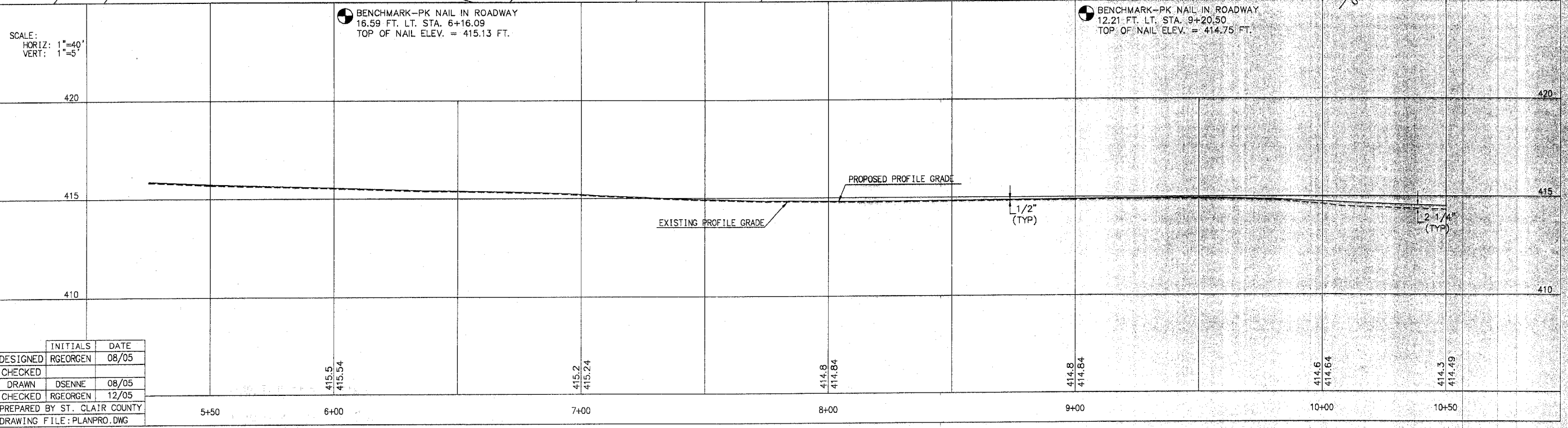
: DENOTES PATCH
 : DENOTES AREA REFLECTIVE CRACK CONTROL TREATMENT

@ CURVE DATA
 PI STA. 7+21
 $\Delta=25^{\circ}52'00''$
 $R=250.79$ FT
 $T=57.59$ FT
 $L=113.22$ FT
 $C=112.26$ FT
 PC STA. 6+63.41
 PT STA. 7+76.63



16

15



SCALE:
 HORIZ: 1"=40'
 VERT: 1"=5'

BENCHMARK-PK NAIL IN ROADWAY
 16.59 FT. LT. STA. 6+16.09
 TOP OF NAIL ELEV. = 415.13 FT.

BENCHMARK-PK NAIL IN ROADWAY
 12.21 FT. LT. STA. 9+20.50
 TOP OF NAIL ELEV. = 414.75 FT.

	INITIALS	DATE
DESIGNED	RGEORGEN	08/05
CHECKED		
DRAWN	DSENNE	08/05
CHECKED	RGEORGEN	12/05
PREPARED BY	ST. CLAIR COUNTY	
DRAWING FILE	PLANPRO.DWG	