

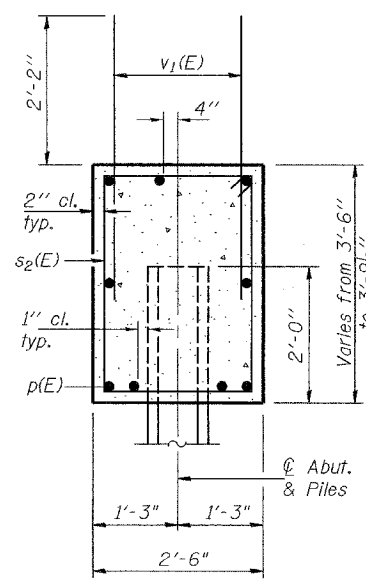
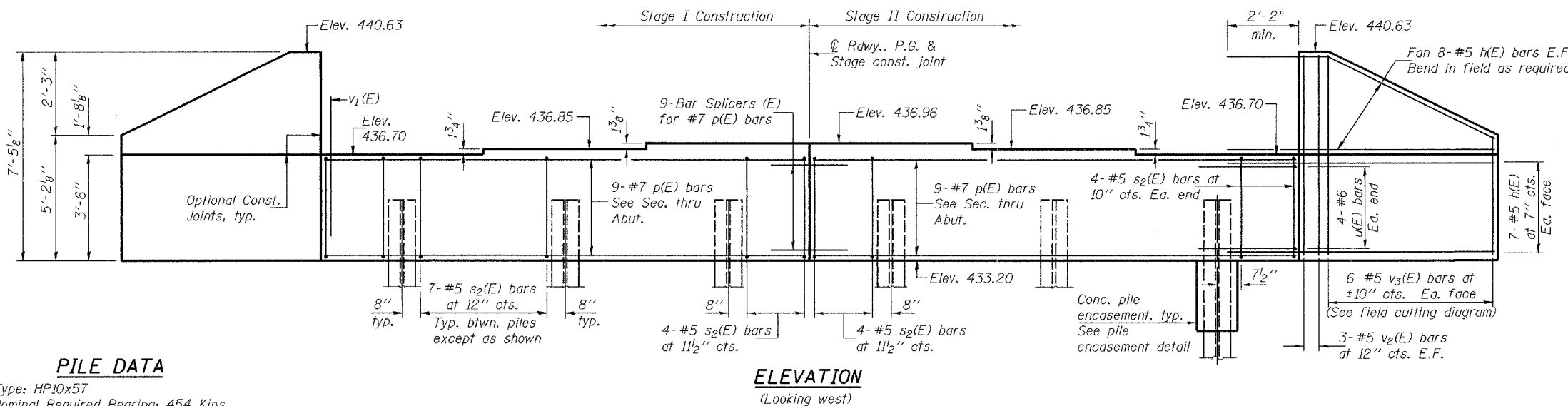
Notes: Four steps monolithically with cap.  
 Reinforcement bars designated (E) shall be epoxy coated.  
 For anchor bolt installation details see sheet 11 of 17.  
 For bar splicer assembly details see sheet 15 of 17.

STATE OF ILLINOIS  
 DEPARTMENT OF TRANSPORTATION

ROUTE NO.	SECTION	COUNTY	SHEET	SHEET NO.
FAP 821	13B-1	JEFFERSON	39	25
ILLINOIS		FED. AID PROJECT-		

17 SHEETS

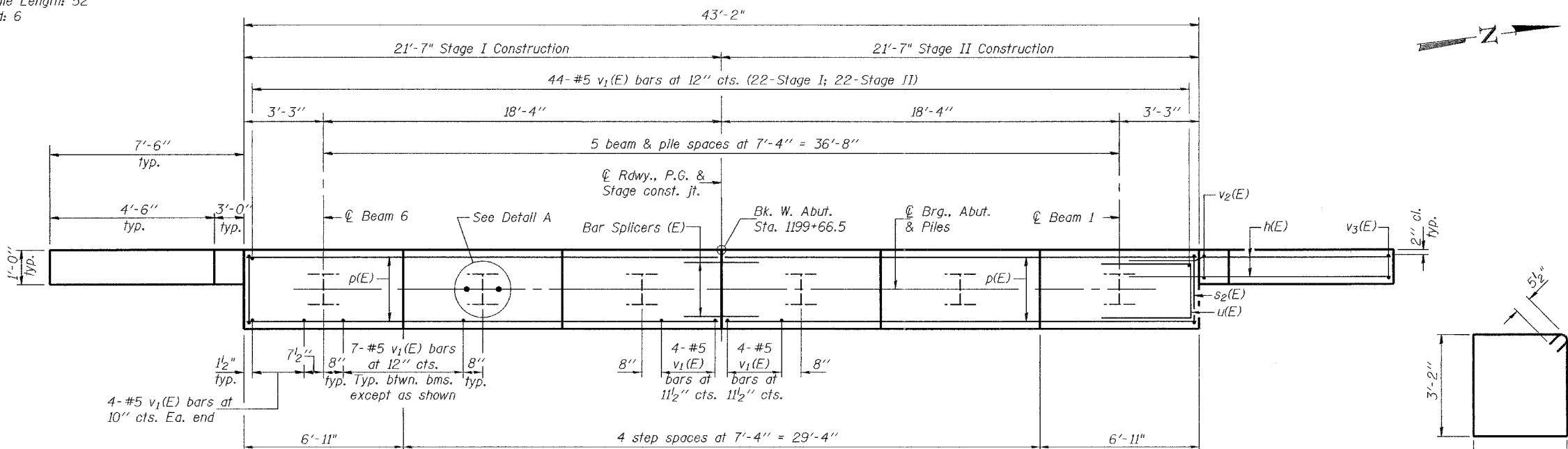
Contract #98957



PILE DATA

Type: HP10x57  
 Nominal Required Bearing: 454 Kips  
 Factored Resistance Available: 227 Kips  
 Estimated Pile Length: 52'  
 No. Required: 6

ELEVATION  
 (Looking west)



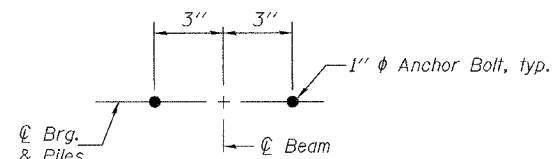
PLAN

BILL OF MATERIAL

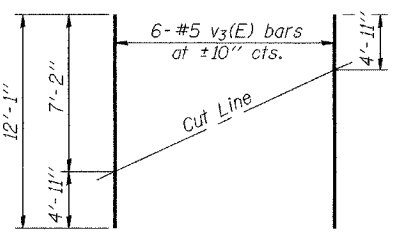
Bar	No.	Size	Length	Shape
h(E)	60	#5	10'-2"	
p(E)	18	#7	21'-4"	
s2(E)	44	#5	11'-7"	□
u(E)	8	#6	8'-1"	□
v1(E)	88	#5	4'-4"	
v2(E)	12	#5	7'-2"	
v3(E)	12	#5	12'-1"	
Concrete Structures			Cu. Yd.	18.3
Reinforcement Bars, Epoxy Coated			Pound	2690
Structure Excavation			Cu. Yd.	86
Furnishing Steel Piles HP10x57			Foot	312
Driving Piles			Foot	312

BAR s2(E)

BAR u(E)

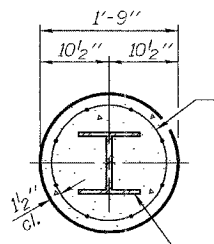


DETAIL A



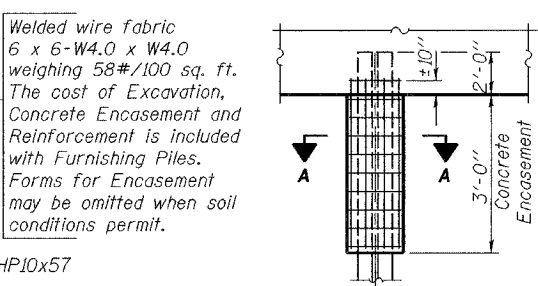
FIELD CUTTING DIAGRAM

Order v3(E) full length. Cut as shown and use remainder of bars in opposite face.



SECTION A-A HP10x57

PILE ENCASEMENT DETAIL



DESIGNED	R.L. Tharp
CHECKED	P.R. Litchfield
DRAWN	h.t. duong
CHECKED	RLT/PRL

Aug. 31, 2006  
 EXAMINED *Thomas J. Demagalibi*  
 ENGINEER OF BRIDGES AND STRUCTURES  
 PASSED *Ralph E. Anderson*  
 ENGINEER OF BRIDGES AND STRUCTURES

WEST ABUTMENT  
 F.A.P. RT. 821 - SECTION 13B-1  
 JEFFERSON COUNTY  
 STATION 1200+35.00  
 STRUCTURE NO. 041-0106