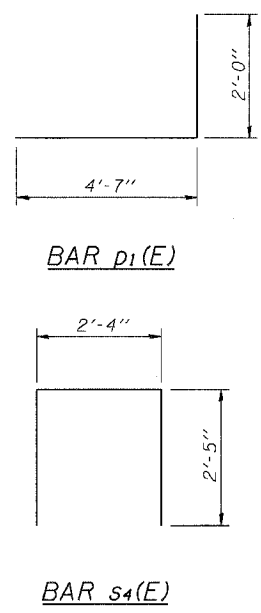
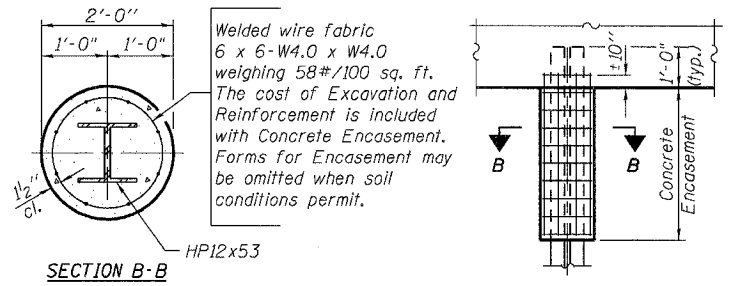
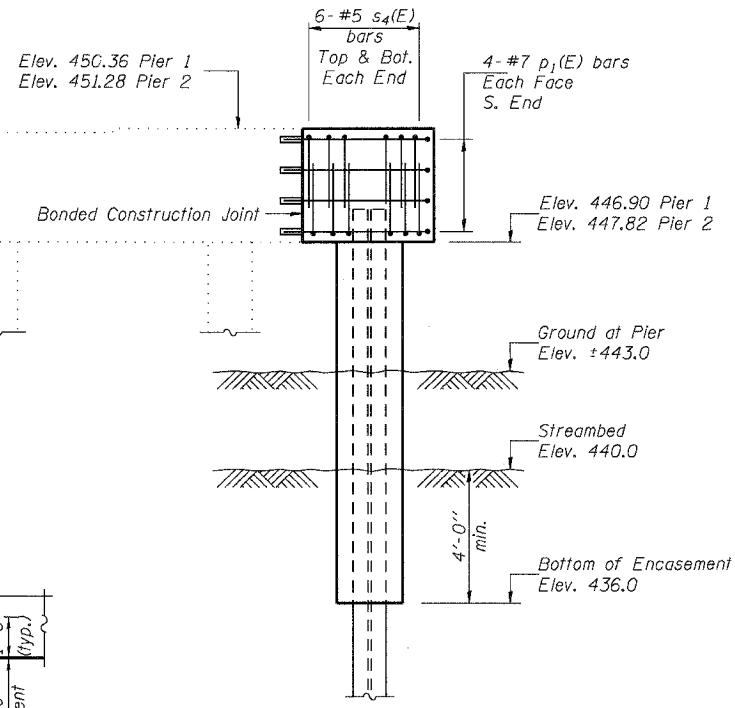
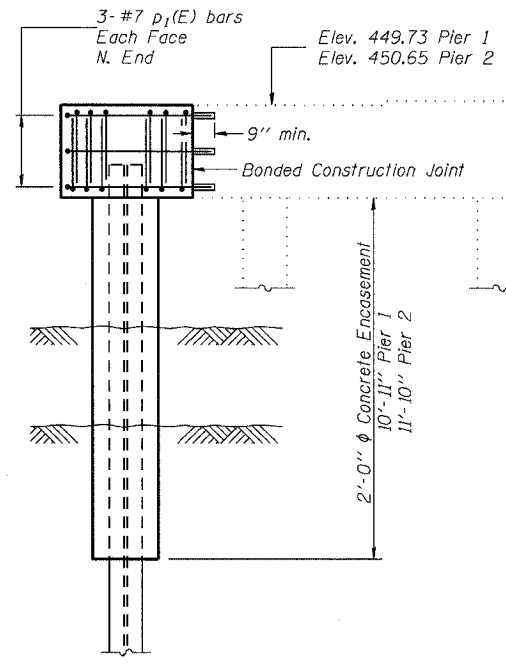
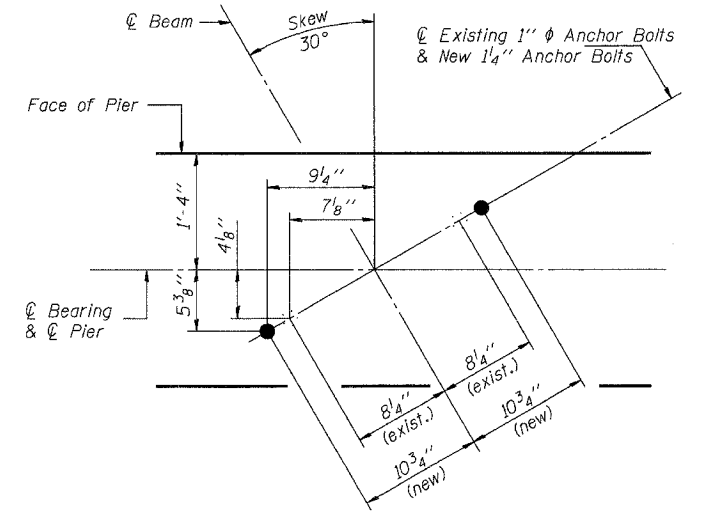
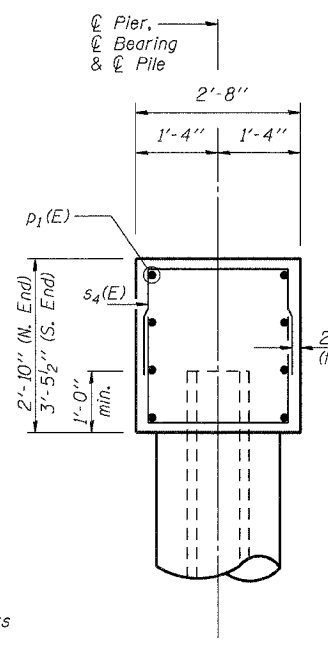
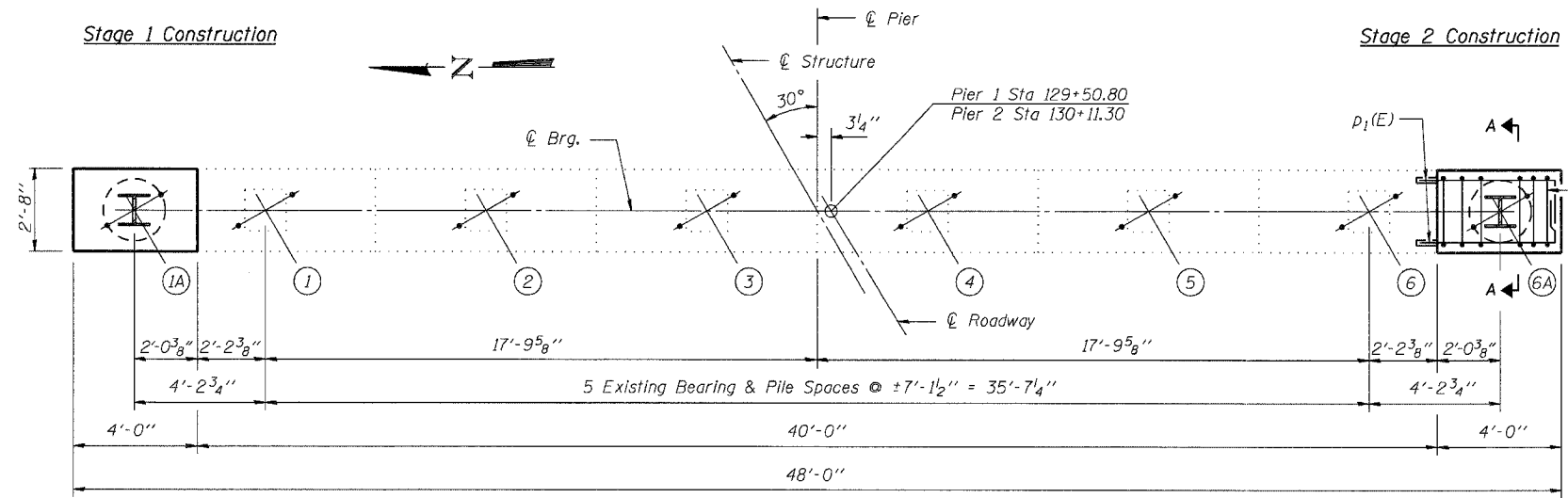


MIN. BAR LAPS
#5 Bar = 1'-8"

ROUTE NO.	SECTION	COUNTY	TOTAL SHEETS	SHEET NO.
F.A.P. 821	(15-2)BR	JEFFERSON	33	28
FED. ROAD DIST. NO. 7	ILLINOIS	PROJECT		
Sheet 16 of 19			CONTRACT #98958	



TWO PIERS BILL OF MATERIAL

Bar	No.	Size	Length	Shape
p1(E)	28	#7	6'-7"	J
s4(E)	48	#5	7'-2"	□
Concrete Structures		Cu. Yd.	5.0	
Reinforcement Bars, Epoxy Coated		Pound	740	
Furnishing Steel Piles HP12x53		Foot	120	
Driving Steel Piles HP12x53		Foot	120	
Test Pile Steel HP12x53		Each	1	
Concrete Encasement		Cu. Yd.	5.1	
Underwater Structure Excavation Protection-Location 1		Each	1	
Underwater Structure Excavation Protection-Location 2		Each	1	

DESIGNED	Ruben V. Boehler
CHECKED	Tim S. Howard
DRAWN	TSH / RVB
CHECKED	Michael D. Cummins

NOTE

Plan elevations relative to the existing structure have been taken from existing plans and reduced by 0.40 feet to match benchmark datum.

PILE DATA

Type: Steel HP12x53
Capacity: 53 Tons
Driven to 80 Tons Bearing
Est. Length: 40 Feet
No. Required: 3 (1 at Pier 1, 2 at Pier 2)
+ 1 Test Pile at Pier 1

Notes:

Reinforcement bars designated (E) shall be epoxy coated. Space drilled holes in existing cap to miss existing reinforcement. Epoxy grout p1(E) bars in accordance with Section 584 of the Standard Specifications. Minimum embedment = 9".

PIERS

IL ROUTE 15 OVER SEVEN MILE CREEK
F.A.P. ROUTE 821 SECTION (15-2)BR
JEFFERSON COUNTY
STA. 129+81.00
S.N. 041-0027

CUMMINS ENGINEERING CORPORATION

JOB #: 2175
FILE: 2175piers
DATE: 3/02/06