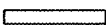







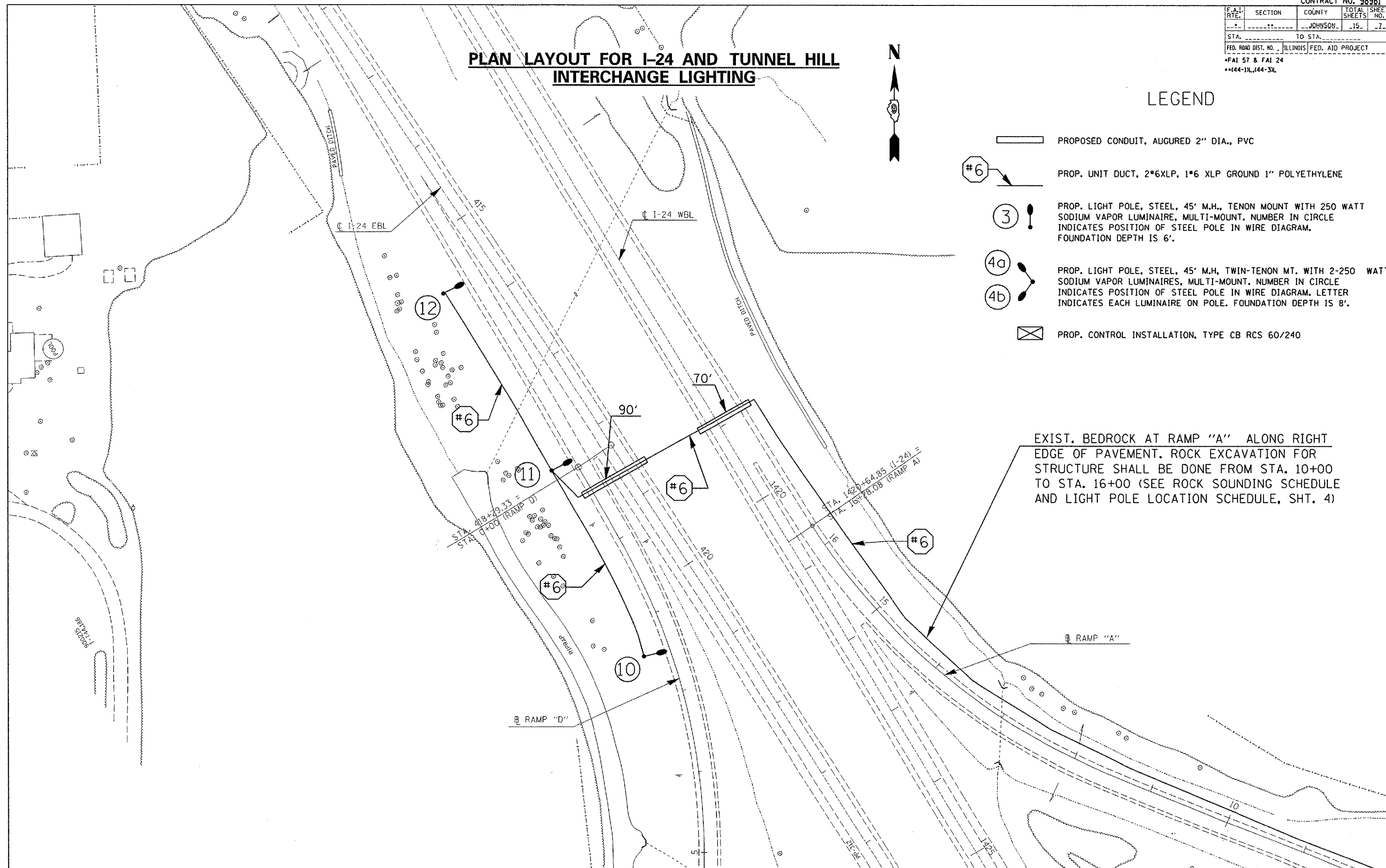
F.A.I. RTE.	SECTION	COUNTY	TOTAL SHEETS	SHEET NO.
		JOHNSON	15	7
STA. _____		TO STA. _____		
FED. ROAD DIST. NO. _____		ILLINOIS FED. AID PROJECT _____		
*FAI 57 & FAI 24				
**44-1JL, 144-3JL				

PLAN LAYOUT FOR I-24 AND TUNNEL HILL INTERCHANGE LIGHTING



LEGEND

-  PROPOSED CONDUIT, AUGURED 2" DIA., PVC
-  PROP. UNIT DUCT, 2*6XLP, 1*6 XLP GROUND 1" POLYETHYLENE
-  PROP. LIGHT POLE, STEEL, 45' M.H., TENON MOUNT WITH 250 WATT SODIUM VAPOR LUMINAIRE, MULTI-MOUNT. NUMBER IN CIRCLE INDICATES POSITION OF STEEL POLE IN WIRE DIAGRAM. FOUNDATION DEPTH IS 6'.
-  PROP. LIGHT POLE, STEEL, 45' M.H., TWIN-TENON MT. WITH 2-250 WATT SODIUM VAPOR LUMINAIRE, MULTI-MOUNT. NUMBER IN CIRCLE INDICATES POSITION OF STEEL POLE IN WIRE DIAGRAM. LETTER INDICATES EACH LUMINAIRE ON POLE. FOUNDATION DEPTH IS 6'.
- 
-  PROP. CONTROL INSTALLATION, TYPE CB RCS 60/240



PLOT DATE = 8/22/2006
 FILE NAME = c:\projects\98981\157-1241lg.m32
 PLOT SCALE = 1/8"=1'-0"
 USER NAME = mcdonald