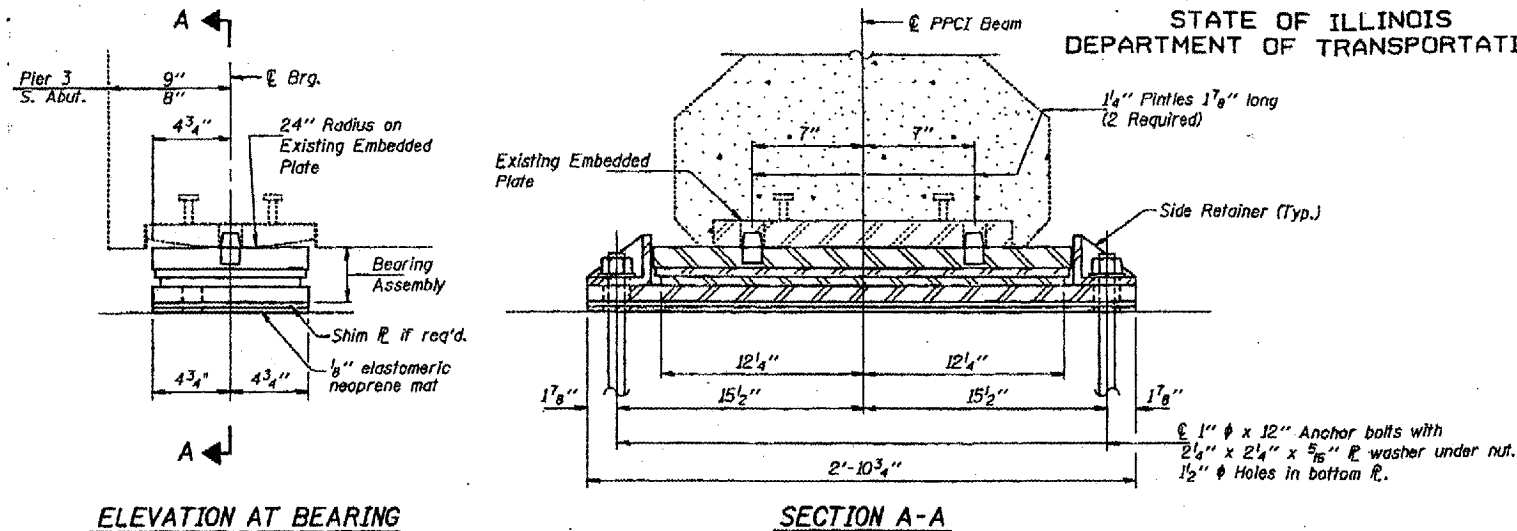


BEAM REACTIONS

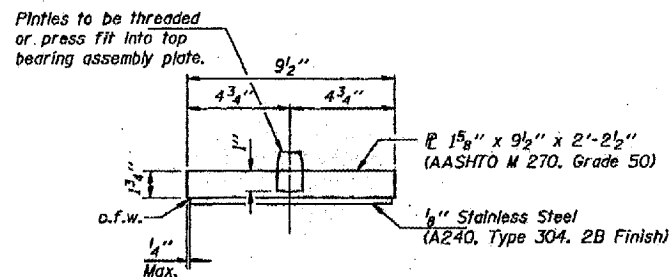
	S. Brg. Pier 3 (Span 4) & S. Abut. (Span 7)
R ₂ (k)	45.6
R ₄ (k)	39.1
R _{IMP} (k)	10.7
R _{TOTAL} (k)	95.4



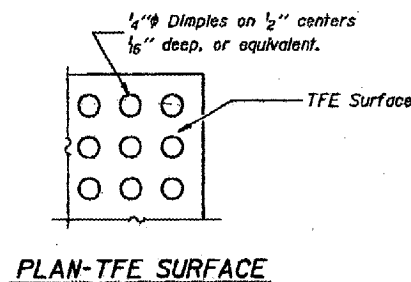
ELEVATION AT BEARING

SECTION A-A

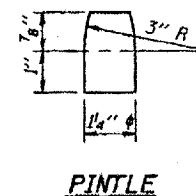
EXPANSION BEARING



TOP BEARING ASSEMBLY

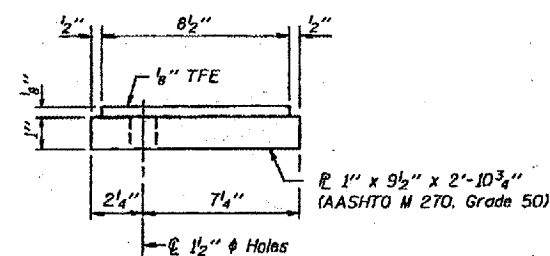


PLAN-TFE SURFACE

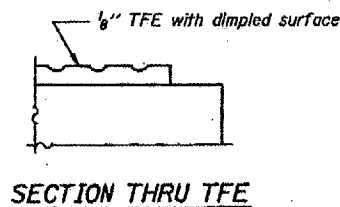


PINTLE

Notes: All steel plates shall be galvanized after shop fabrication according to AASHTO M 111 and ASTM A 385. All hardware shall be hot dip galvanized according to AASHTO M 232 and ASTM A 153. Prior to ordering any material, the Contractor shall verify in the field all bearing height and shim thickness dimensions. See sheet 9 of 17 for Anchor Bolt installation. New side retainers, shim plates, stainless steel sheet, TFE sheet, anchor bolts and elastomeric neoprene mats are included in "Furnishing and Erecting Structural Steel".

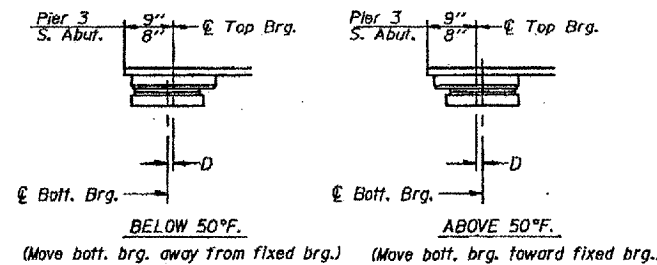


BOTTOM BEARING ASSEMBLY



SECTION THRU TFE

Note: The 1/8" TFE sheet shall be bonded directly to the bottom steel plate with a two-component, medium viscosity epoxy resin, conforming to the requirements of the Federal Specification MMM-A-134, Type I. The bond agent shall be applied on the full area of the contact surfaces.



SETTING ANCHOR BOLTS AT EXP. BRG.

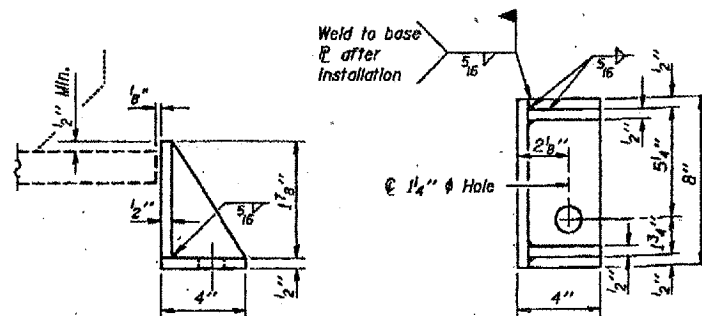
D=1/8" per each 100' of expansion for every 15° temp. change from the normal temp. of 50°F.

BILL OF MATERIAL
(Total for 2 Structures)

Item	Unit	Total
Jack and Remove Existing Bearings	Each	20
Furnishing and Erecting Structural Steel	Pound	5410

BRIDGES NO. 1 AND NO. 2
002-0003 002-0004
FOR INFORMATION ONLY

EXPANSION BEARING DETAILS
PIER 3 (S.) & SOUTH ABUTMENT
F.A.I. ROUTE 57 - SECTION (02-1B)I
ALEXANDER COUNTY
STATION 943+72.00



SIDE RETAINER

Equivalent rolled angle with stiffeners will be allowed in lieu of welded plates. Weight included with Structural Steel.

July 5, 2008
EXAMINED *Thomas J. Demagala*
DESIGNER OF RECORD
PASSED *Ralph C. Anderson*
ENGINEER OF BRIDGES AND STRUCTURES