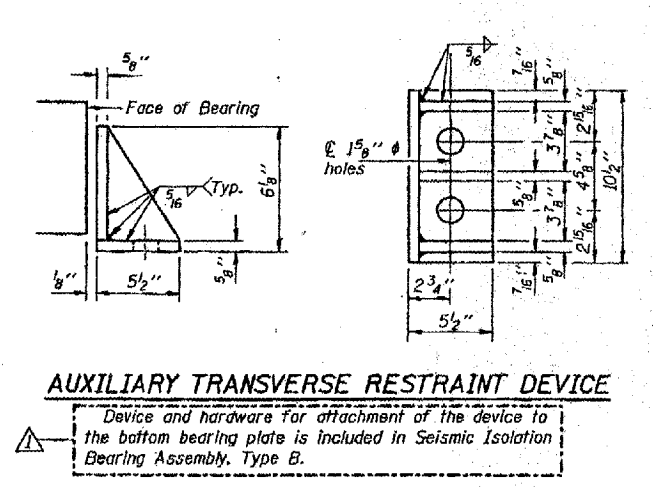
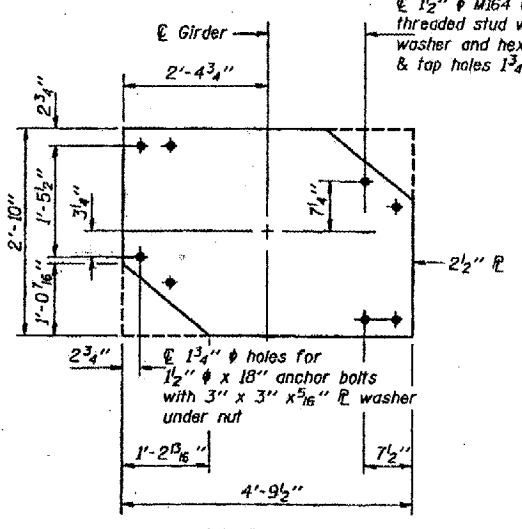
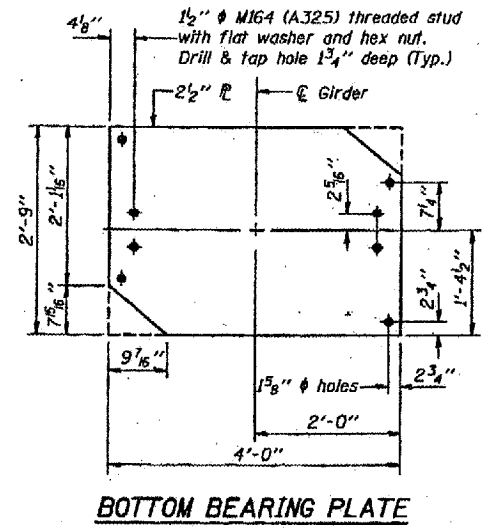
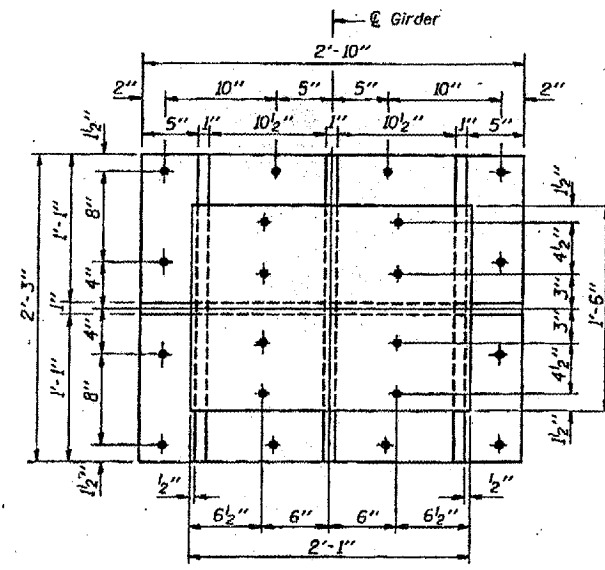


* Limit for pay item Seismic Isolation Bearing Assembly. Hardware for the attachment of the Steel Extension to the Top Bearing and for the attachment of the Bottom Bearing Plate to the Masonry Plate is included in Structural Steel.



See sheet 6 of 17 for notes.

VERTICAL REACTIONS
PER TYPE B BEARING

	Piers 1 & 2
R _{DL} (k)	565
R _{LL} (k)	222
R _{IMP} (k)	40
R _{TOTAL} (k)	827

NON-SEISMIC LATERAL EFFECTS
PER TYPE B BEARING

	Piers 1 & 2	
Thermal Effects	Longitudinal Displ. (in)	1.09
	Longitudinal Force (k)	34.5
AASHTO Group Load Effects	Longitudinal Force (k)	16.8
	Transverse Force (k)	59.8
	Transverse Displ. (in)	1.44

FORCE-DEFLECTION CHARACTERISTICS
PER TYPE B BEARING

	Piers 1 & 2	
Longitudinal Load Case:		
K _g (k/in)	10.0	
Δ _{max} (in)	2.72	
F _{max} (k)	67.2	
K _{eff} (k/in)	24.7	
EDC (k-in)	435	
β	0.38	
Transverse Load Case:		
K _g (k/in)	18.0	
Δ _{max} (in)	2.30	
F _{max} (k)	81.4	
K _{eff} (k/in)	35.4	
EDC (k-in)	368	
β	0.31	

BILL OF MATERIAL
(Total for 2 Structures)

Item	Unit	Total
Jack and Remove Existing Bearings	Each	8
Seismic Isolation Bearing Assembly, Type B	Each	8
Furnishing and Erecting Structural Steel	Pound	17,190

July 5, 2008
EXAMINED: Thomas J. Donnell
PASSED: Robert E. Anderson

BEARING DETAILS
PIERS 1 & 2
F.A.I. RTE. 57 - SEC. (02-1B)
ALEXANDER COUNTY
STATION 943+72.00

BRIDGES NO. 1 AND NO. 2
002-0003 002-0004
FOR INFORMATION ONLY