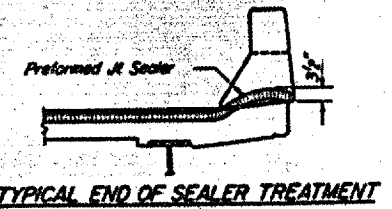
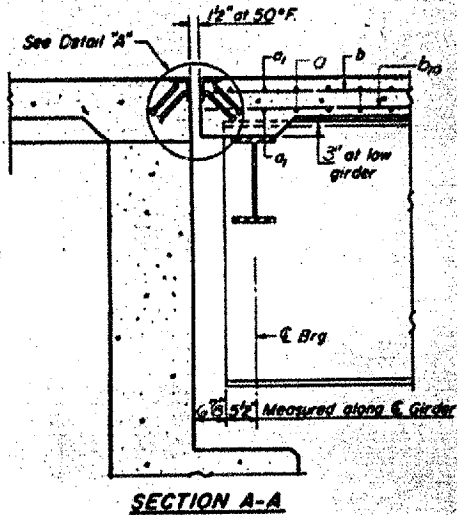
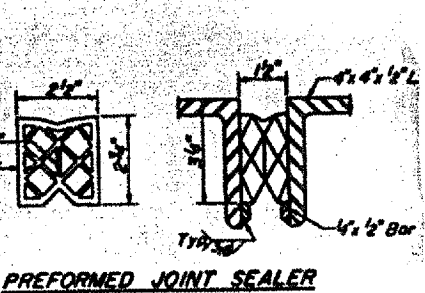
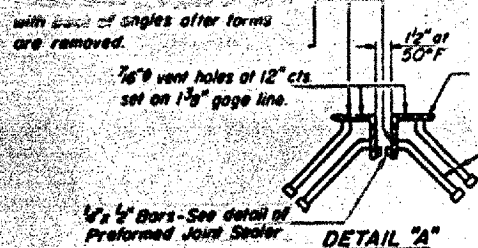
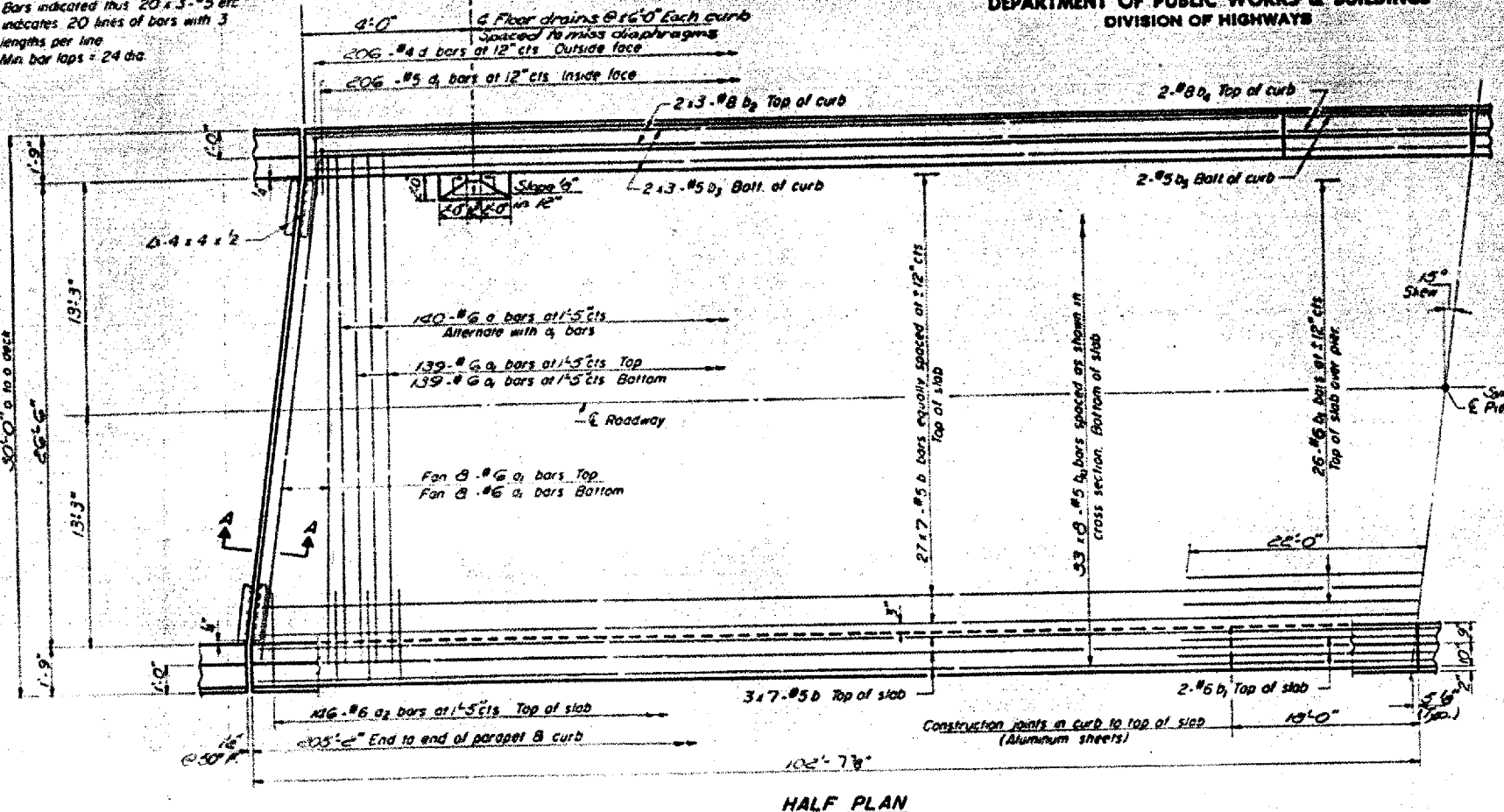


STATE OF ILLINOIS
DEPARTMENT OF PUBLIC WORKS & BUILDINGS
DIVISION OF HIGHWAYS

CONTRACT NO. 98989

VARIOUS ROUTES
VARIOUS COUNTIES
D9 BRIDGE PAINTING 2007-1
SHEET 23 OF 31

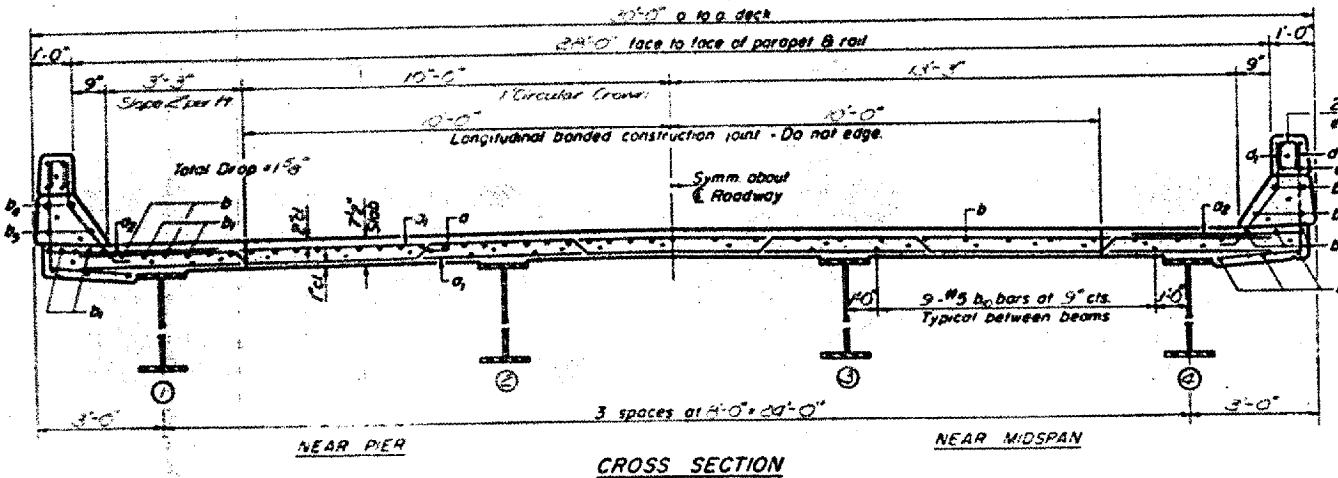
NOTE:
Bars indicated thus 20 x 3 #5 etc
indicates 20 lines of bars with 3
lengths per line.
Min. bar laps = 24 dia.



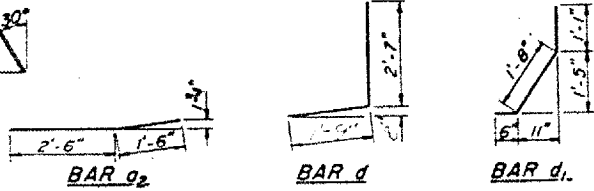
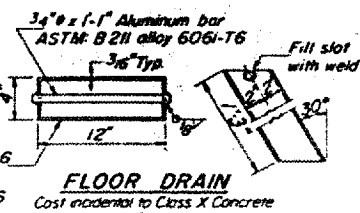
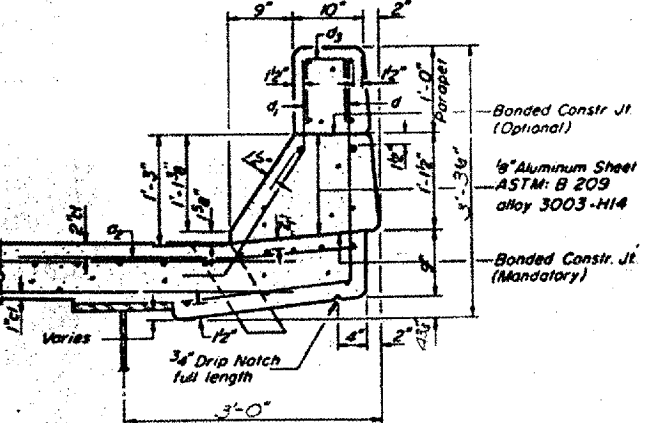
BILL OF MATERIAL

Bar	No.	Size	Length	Shape
a	140	#6	29'-3"	
a ₁	310	#6	29'-0"	
a ₂	292	#6	4'-0"	
b	231	#5	30'-5"	
b ₁	30	#6	44'-0"	
b ₂	29	#8	29'-0"	
b ₃	29	#5	29'-0"	
b ₄	8	#8	17'-0"	
b ₅	8	#5	17'-0"	
b ₆	202	#5	16'-9"	
d	412	#4	3'-4"	
d ₁	412	#5	3'-3"	

Reinforcement Bars Lbs 43,350
Class X Concrete Cu. Yds 182.0
Structural Steel Lump Sum L.S.



NOTE: For placement of bars a, c, e, f, e₂, see sheet #6



Aluminum Sheets Welded
ASTM B209 alloy 6061-T6
or Aluminum Extrusions
ASTM B221 alloy 6061-T6

Cost of Aluminum Sheets shall be incidental to Class X Concrete.

Cost incidental to Class X Concrete

BRIDGE NO. 4
041-0080
FOR INFORMATION ONLY
SUPERSTRUCTURE
F.A.I. RTGD SEC. 41-7HB-3
JEFFERSON COUNTY
STATION 2343+00

DESIGNED	Matthew K. Cheady, M.E.
CHECKED	James M. Baskin
DRAWN	J. Sutherland, etc.
CHECKED	

Jan 15 1970

EXAMINED	
PASSED	
APPROVED	

Richard H. Hoffmann