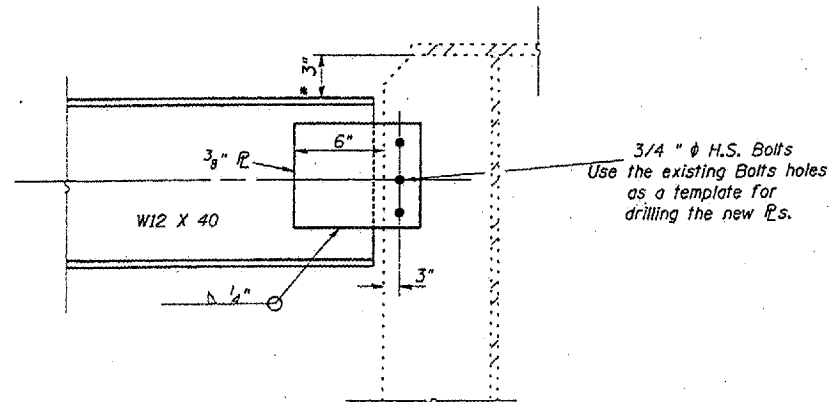


DIAPHRAGM REPLACEMENT AT ABUTMENTS

Required: 10 - W12 x 40



**CROSS SECTION
OF DIAPHRAGM CONNECTIONS**

Located at the Lower
of the two Girders

Note: $\frac{15}{16}$ " Holes for new $\frac{3}{4}$ " H.S. Bolts shall be used for all diaphragm connections. Two hardened washers shall be required at diaphragm connections.

DESIGNED	T. Wayne Halstead
CHECKED	Mike Stephenson
DRAWN	T. Wayne Halstead
CHECKED	TWH MAS CMW

BRIDGE NO. 5
091-0060
FOR INFORMATION ONLY