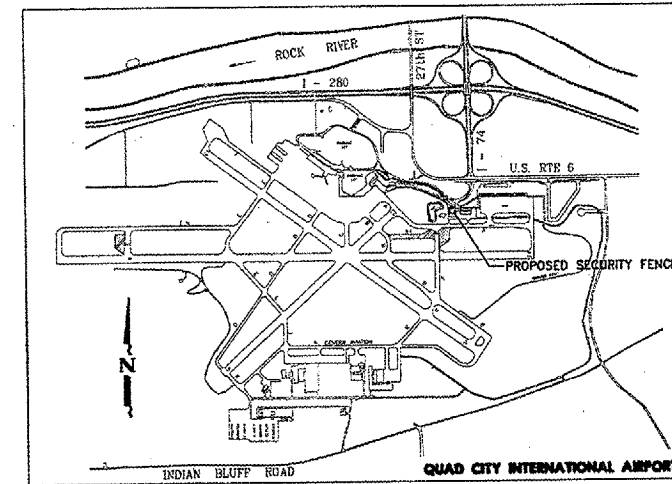


CONSTRUCTION PLANS FOR QUAD CITY INTERNATIONAL AIRPORT ROCK ISLAND COUNTY CONSTRUCT SECURITY FENCE PHASE IV



PROJECT LOCATION MAP

UTILITY NOTE

THE LOCATION OF UNDERGROUND UTILITIES AS INDICATED ON THE PLANS HAS BEEN OBTAINED FROM EXISTING RECORDS. NEITHER THE OWNER NOR THE ENGINEER ASSUMES ANY RESPONSIBILITY WHATSOEVER, IN RESPECT TO THE ACCURACY OR SUFFICIENCY OF THE INFORMATION AND THERE IS NO GUARANTEE, EITHER EXPRESSED OR IMPLIED, THAT THE CONDITIONS THAT ARE INDICATED ARE REPRESENTATIVE OF THOSE TO BE ENCOUNTERED IN THE CONSTRUCTION. IT SHALL BE THE CONTRACTOR'S RESPONSIBILITY TO DETERMINE THE EXACT LOCATION AND ELEVATION OF ALL UTILITIES AND TO ASCERTAIN WHETHER ANY ADDITIONAL FACILITIES OTHER THAN THOSE SHOWN ON THE PLAN MAY BE PRESENT. GIVE FORTY-EIGHT HOURS NOTICE TO ALL UTILITY COMPANIES PRIOR TO STARTING CONSTRUCTION OPERATIONS, INCLUDING QUAD CITY AIRPORT & F.A.A. FACILITIES NOT ON J.U.L.I.E.

INDEX OF SHEETS

- 1 COVER SHEET & INDEX OF SHEETS
- 2 SUMMARY OF QUANTITIES, GENERAL NOTES & LEGEND
- 3 SAFETY PLAN & INDEX MAP
- 4-5 GENERAL CONSTRUCTION PLANS
- 6 FENCE DETAILS
- 7 SLIDING GATE DETAILS

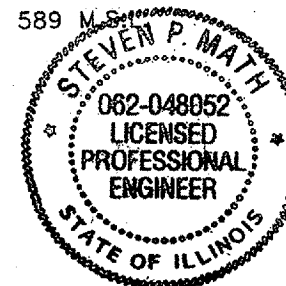


ILLINOIS PROJECT MLI-3638
AIP PROJECT NO. 3-17-0068-58
AIRPORT CLASSIFICATION - AIR CARRIER

LATITUDE 41°26'51.4", LONGITUDE 91°31'41.6", ELEVATION 589 M.S.

AIRCRAFT APPROACH CATEGORY - D
AIRCRAFT DESIGN GROUP - IV

SEPTEMBER 15, 2006
OFFICIAL DATE OF PLANS



BEFORE YOU DIG CALL J.U.L.I.E.
1-800-892-0123

BEFORE YOU DIG CALL QUAD CITY AIRPORT
1-309-764-9621

BEFORE YOU DIG CALL F.A.A.
1-309-793-5832

SUMMARY OF QUANTITIES
SEE SHEET 2

QUAD CITY OFFICE
McCLURE ENGINEERING ASSOCIATES, INC.
4700 Kennedy Drive East Moline, Illinois 61244
(309) 792-9350 FAX (309) 792-8974
Design Firm License: Illinois #184-000816
Copyright 2006 by McClure Engineering Associates, Inc.

McClure Engineering Associates, Inc.
BY: *[Signature]*
DATE: 9/15/06
RENEWAL DATE: 11/30/07

Metropolitan Airport Authority OF ROCK ISLAND COUNTY
BY: *[Signature]*
DATE APPROVED: 9-15-06

SUMMARY OF QUANTITIES

LEGEND

QU002

ITEM NO.	ITEM DESCRIPTION	UNIT	BASE BID		ADDITIVE ALTERNATE NO. 1	
			BID QUANTITY	FINAL QUANTITY	BID QUANTITY	FINAL QUANTITY
AR150530	TRAFFIC MAINTENANCE	LS	1			
AR162510	CLASS E FENCE 10'	LF	3,082			
AR162706	ELECTRIC GATE - 6'	EA	1			
AR162714	ELECTRIC GATE - 14'	EA	1			
AR162722	ELECTRIC GATE - 22'	EA	2			
AR162724	ELECTRIC GATE 24'	EA	1			
AR162726	ELECTRIC GATE - 26'	EA	1			
AR162900	REMOVE CLASS E FENCE	LF	3,155			
AR163510	TEMPORARY FENCE	LF	2,156			
AR208510	AGGREGATE BASE COURSE	TON	83			
AR901510	SEEDING	AC	0.75			
AS801550	TURNSTILE GATE UPGRADE	EA			1	

- EXISTING RIGHT-OF-WAY LINE
- EXISTING EASEMENT LINE
- 570----- EXISTING CONTOURS (1' INT.)
- 570----- EXISTING CONTOURS (1' INT.)
- EXISTING SANITARY SEWER
- EXISTING STORM SEWER
- PROPOSED STORM SEWER
- W ----- EXISTING WATER MAIN
- EXISTING MANHOLE
- EXISTING INLET
- UT ----- EXISTING UNDERGROUND TELEPHONE LINE
- 4G ----- EXISTING GAS LINE
- OE ----- EXISTING OVERHEAD ELECTRIC LINE
- UE ----- EXISTING UNDERGROUND ELECTRIC LINE
- FO ----- EXISTING FIBER OPTIC LINE
- EXISTING FENCE
- PROPOSED CLASS E FENCE - 10'
- PROPOSED TEMPORARY FENCE
- EXISTING TELEPHONE PEDESTAL
- EXISTING VALVE
- EXISTING FIRE HYDRANT
- EXISTING UTILITY POLE
- EXISTING UTILITY POLE W/GUY WIRE
- EXISTING UTILITY POLE W/LIGHT
- EXISTING DECORATIVE LIGHT
- EXISTING SIGN
- EXISTING STREET SIGN
- EXISTING RETROREFLECTIVE MARKER
- EXISTING MITL BASE MOUNTED
- EXISTING TREE
- EXISTING TREE TO BE REMOVED
- EXISTING SHRUB
- EXISTING TREE STUMP
- EXISTING TREE STUMP TO BE REMOVED
- EXISTING TREE LINE
- DIRECTION OF FLOW
- T/P ----- TOP OF PIPE
- FL ----- FLOWLINE
- INV ----- INVERT
- CP ----- CONTROL POINT
- PROPOSED ELECTRIC GATE NUMBER

GENERAL NOTES

- 1.) THE CONTRACTOR SHALL NOTIFY THE METROPOLITAN AIRPORT AUTHORITY (MAA) AND ALL UTILITY COMPANIES AT LEAST 48 HOURS PRIOR TO THE START OF CONSTRUCTION.
- 2.) THE CONTRACTOR SHALL NOTIFY AND COORDINATE WITH THE MAA AND THE INDIVIDUAL TENANTS FOR ALL GATE CLOSURES.
- 3.) IT SHALL BE THE RESPONSIBILITY OF THE CONTRACTOR TO PROTECT ALL EXISTING UTILITIES AND PAVED AREAS, INCLUDING ANY NOT SHOWN ON THESE DRAWINGS. THE CONTRACTOR SHALL VERIFY ALL EXISTING UTILITIES PRIOR TO CONSTRUCTION AND NOTIFY THE ENGINEER IF ANY CONFLICTS WITH THE DRAWINGS OCCUR. ANY DAMAGE TO EXISTING UTILITIES CAUSED BY TRENCHING AND GRADING OPERATIONS SHALL BE REPAIRED AT THE CONTRACTOR'S EXPENSE. EXISTING UTILITY LOCATIONS SHOWN ON THE DRAWINGS ARE APPROXIMATE.
- 4.) ALL DEBRIS RESULTING FROM CONSTRUCTION OPERATIONS SHALL BE PROPERLY DISPOSED OF OFF-SITE. SUITABLE EXCESS EXCAVATED MATERIAL SHALL BE DISPOSED OF ON AIRPORT PROPERTY AS DIRECTED BY THE ENGINEER.
- 5.) PROVIDE POSITIVE DRAINAGE AT ALL TIMES WITHIN THE CONSTRUCTION AREAS. DO NOT ALLOW WATER TO POND OR TO DRAIN ONTO PRIVATE PROPERTY.
- 6.) EROSION CONTROL FEATURES AS NEEDED SHALL BE INCORPORATED INTO THE CONSTRUCTION AT THE EARLIEST POSSIBLE TIME TO LIMIT EROSION AND SHALL BE MAINTAINED UNTIL ACCEPTANCE OF THE PROJECT BY THE AIRPORT.
- 7.) THE CONTRACTOR SHALL NOTIFY THE ENGINEER IMMEDIATELY IF ANY DISCREPANCIES ARE ENCOUNTERED BETWEEN THE PLANS AND SPECIFICATIONS AND THE EXISTING FIELD CONDITIONS.
- 8.) THE FINAL TOP 4" OF SOIL IN ANY AREA DISTURBED BY THE CONTRACTOR THAT IS NOT PAVED AS PART OF THIS PROJECT SHALL BE CAPABLE OF SUPPORTING VEGETATION.

IL. PROJ: MLI - 3638 AIP PROJ: 3-17-0068-58

QUAD CITY INTERNATIONAL AIRPORT
Moline, IL



REVISIONS		
NO.	ITEM	DATE

PLOTTING SCALE: 1" = 1'
DRAWN BY: SPW
CHECKED BY:
DATE: SEPTEMBER 2006

McCLURE ENGINEERING ASSOCIATES, INC.
4700 Kennedy Drive (309) 792-8500 East Moline, Illinois 61234 FAX (309) 792-8974
Design Firm License: #004-000618 Copyright 2006 by McClure Engineering Associates, Inc.

SUMMARY OF QUANTITIES, GENERAL NOTES & LEGEND
QUAD CITY INTERNATIONAL AIRPORT SECURITY FENCE - PHASE IV
MOLINE, ILLINOIS
FILE NAME: F:\MOT06.008\DWG\06191002.DWG JOB NUMBER: 01-28-06-191

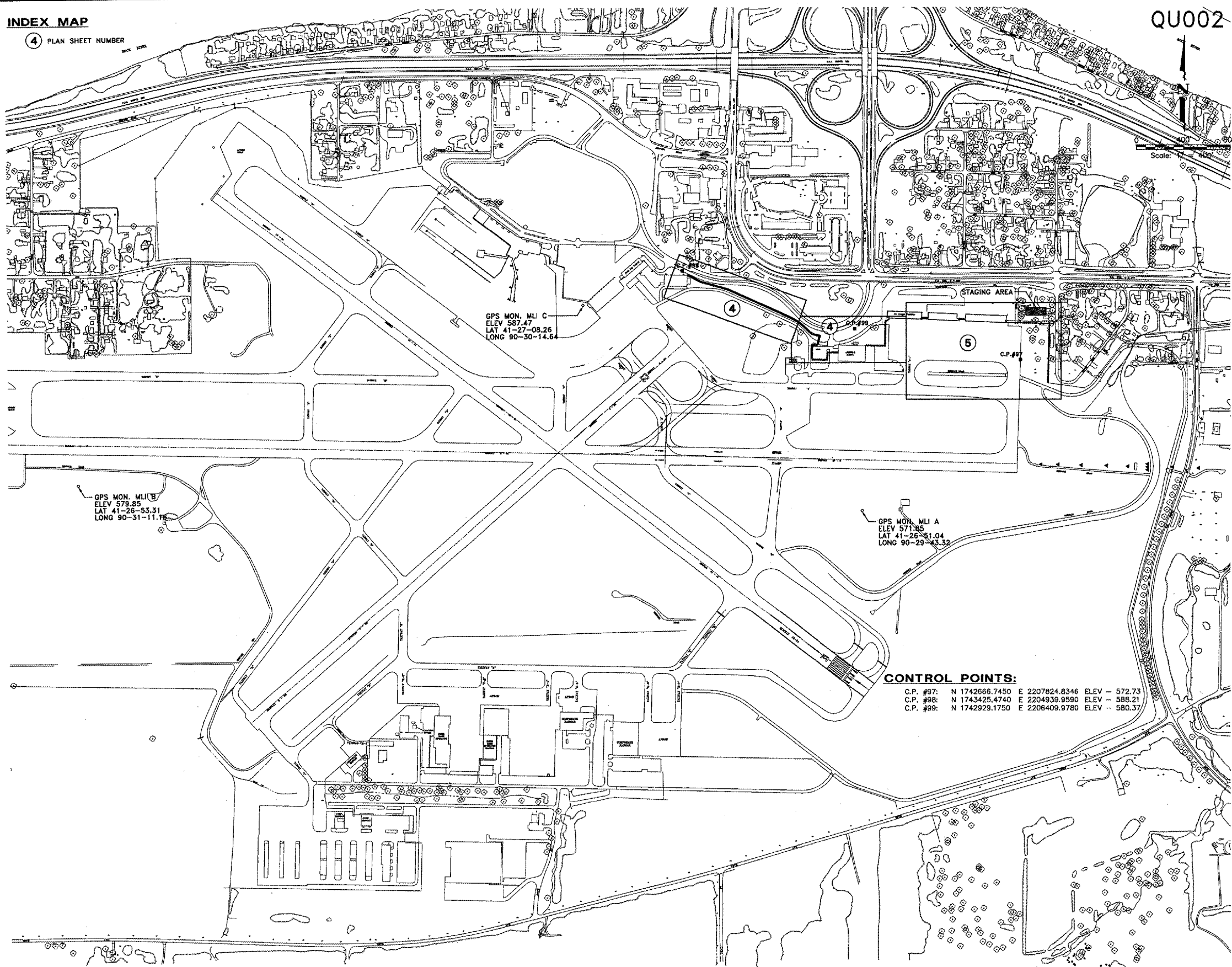
SHEET NO.
2
OF 7

INDEX MAP

4 PLAN SHEET NUMBER

SAFETY PLAN NOTES:

- 1.) IT SHALL BE THE CONTRACTOR'S RESPONSIBILITY TO COORDINATE ALL CONSTRUCTION ACTIVITIES AND SCHEDULES WITH M.A.A. AND THE ENGINEER.
- 2.) THE METROPOLITAN AIRPORT AUTHORITY SHALL RETAIN THE RIGHT TO RESTRICT ACCESS TO THE CONSTRUCTION AREA DURING EMERGENCY SITUATIONS, OR PERIODS OF INCLEMENT WEATHER REQUIRING SPECIAL AIRCRAFT HANDLING CONDITIONS, OR DURING VISITS BY HIGH RANKING DIGNITARIES OR OTHER SECURITY RELATED ACTIVITIES.
- 3.) THE CONTRACTOR SHALL BE RESPONSIBLE FOR MAINTAINING AND SUPERVISING ALL SAFETY PRECAUTIONS AND PROGRAMS IN CONNECTION WITH THE PROJECT.
 - A. THE CONTRACTOR SHALL PROCURE, FROM THE AIRPORT AUTHORITY, SECURITY IDENTIFICATION BADGES FOR HIS EMPLOYEES TO GUARANTEE AT LEAST ONE MEMBER OF EACH CONSTRUCTION CREW WILL HAVE A BADGE. ANY CONSTRUCTION CREW WITHOUT A BADGED MEMBER SHALL NOT BE ALLOWED ON THE AIRFIELD SITE.
 - B. A 24 HOUR LOCAL TELEPHONE SHALL BE ESTABLISHED AND MANNED AT ALL TIMES BY THE CONTRACTOR TO PROVIDE INSTANT RESPONSE TO BREACHES OF SAFETY/SECURITY AND MAINTENANCE OF SIGNS/BARRICADES, ETC.
- 4.) THE CONTRACTOR SHALL TAKE ALL REASONABLE PRECAUTIONS FOR THE SAFETY OF AND SHALL PROVIDE ALL REASONABLE PROTECTION TO PREVENT DAMAGE, INJURY, OR LOSS TO:
 - A. ALL EMPLOYEES ON THE PROJECT AND ALL OTHER PERSONS WHO MAY BE AFFECTED.
 - B. ALL THE WORK AND ALL MATERIALS AND EQUIPMENT TO BE INCORPORATED UNDER THE CARE, CUSTODY, OR CONTROL OF THE CONTRACTOR OR ANY OF HIS SUBCONTRACTORS.
 - C. ALL EXISTING FACILITIES THAT ARE TO REMAIN IN PLACE.
- 5.) ALL OPERATIONS SHALL BE IN CONFORMANCE WITH AC 150/5370-2 (LATEST EDITION) OPERATIONAL SAFETY ON AIRPORTS DURING CONSTRUCTION.
- 6.) ALL CONSTRUCTION VEHICLES, EQUIPMENT AND PERSONNEL SHALL REMAIN CLEAR OF THE AIRFIELD SAFETY AREA LIMITS, UNLESS AUTHORIZED BY THE ENGINEER AND MAA.
- 7.) ALL CONSTRUCTION VEHICLES AND EQUIPMENT SHALL PROMINENTLY DISPLAY 3'x3' ORANGE AND WHITE CHECKERED FLAGS. NO PERSONAL VEHICLES SHALL BE ALLOWED ON THE CONSTRUCTION SITE. ALL VEHICULAR TRAFFIC SHALL BE KEPT TO A MINIMUM. WHERE TRAFFIC CANNOT BE AVOIDED, IT SHALL BE KEPT WITHIN THE CONSTRUCTION LIMITS. ALL VEHICLES ON THE AIRFIELD REQUIRE APPROVAL OF THE ENGINEER/MAA.
- 8.) GATES SHALL BE MANNED BY A COMPETENT GUARD OR LOCKED AT ALL TIMES. ANY GAPS IN FENCING FOR CONSTRUCTION PURPOSES SHALL BE RESECURED DURING NON-WORKING HOURS AND WHEN THE CONTRACTOR IS NOT IN THE IMMEDIATE VICINITY. VIOLATIONS ARE SUBJECT TO FINES/PENALTIES AND THE CONTRACTOR SHALL PAY ANY FINES INCURRED, INCLUDING FINES INCURRED BY THE ENGINEER AND/OR MAA DUE TO THE CONTRACTOR'S NEGLIGENCE.
- 9.) NO CONSTRUCTION ACTIVITIES SHALL TAKE PLACE WITHIN 200' OF THE CENTER LINE OF RUNWAYS AND TAXIWAYS UNLESS AUTHORIZED BY THE ENGINEER & M.A.A.
- 10.) THE CONTRACTOR SHALL USE THE DESIGNATED HAUL ROUTES, CONSTRUCTION STAGING AREAS AND ENTRANCES TO THE AIRFIELD AS SHOWN ON THE SAFETY PLAN. NO CONSTRUCTION TRAFFIC SHALL BE ALLOWED ON THE AIRFIELD OUTSIDE THE HAUL ROUTES AND WORK AREAS UNLESS OTHERWISE AUTHORIZED BY THE ENGINEER AND MAA.
- 11.) IT WILL BE THE CONTRACTOR'S RESPONSIBILITY TO RESTORE THE CONSTRUCTION STAGING AREA, THE CONSTRUCTION HAUL ROAD AND AREAS OUTSIDE THE CONSTRUCTION LIMITS TO THEIR ORIGINAL CONDITION FOLLOWING COMPLETION OF CONSTRUCTION. THIS MAY INCLUDE, BUT NOT BE LIMITED TO, REGRADING, FERTILIZING, SEEDING, AND MULCHING OF EARTH SURFACES TO THE SATISFACTION OF THE ENGINEER. ALL GROUND SURFACES, PAVEMENTS, AND FACILITIES DAMAGED BY THE CONTRACTOR WHILE COMPLETING THE PROPOSED WORK SHALL BE REPAIRED OR RETURNED TO ITS ORIGINAL STATE. COST TO BE INCLUDED IN THE MAINTENANCE OF TRAFFIC LUMP SUM PRICE.
- 12.) DUST ABATEMENT MEASURES WILL BE REQUIRED, WHEN, IN THE OPINION OF THE RESIDENT ENGINEER, A HAZARD TO AIR TRAFFIC, LOCAL RESIDENTS, OR CONSTRUCTION PROJECT PERSONNEL EXISTS. PREVENTATIVE MEASURES CAN INCLUDE, BUT ARE NOT LIMITED TO, WATERING AND TREATMENT WITH CALCIUM CHLORIDE.
- 13.) UNLESS OTHERWISE DIRECTED, ALL MATERIALS NOT TO BE INCORPORATED IN EACH CONTRACT SHALL BE DISPOSED OF OFF-SITE AT THE CONTRACTOR'S EXPENSE. NOTHING MOUNDED HIGHER THAN 3" ABOVE THE EXISTING SURFACE WILL BE PERMITTED ON THE AIRFIELD AT ANY TIME.
- 14.) SEQUENCE OF CONSTRUCTION:
 - A. ALL STAGES OF CONSTRUCTION MUST BE COORDINATED WITH THE M.A.A. AND THE ENGINEER.
 - B. M.A.A. RESERVES THE RIGHT TO CHANGE OR ADJUST ANY SEQUENCE OF CONSTRUCTION.
 - C. TEMPORARY FENCE, WHERE SHOWN ON THE PLANS, SHALL BE SECURELY IN PLACE BEFORE EXISTING FENCE IS REMOVED.
 - D. WHERE NO TEMPORARY FENCE IS SHOWN, THE PROPOSED FENCE SHALL BE IN PLACE BEFORE THE EXISTING FENCE IS REMOVED.



CONTROL POINTS:

C.P. #97:	N 1742666.7450	E 2207824.8346	ELEV - 572.73
C.P. #98:	N 1743425.4740	E 2204939.9590	ELEV - 588.21
C.P. #99:	N 1742929.1750	E 2206409.9780	ELEV - 580.37

IL. PROJ: MLI - 3638 AIP PROJ: 3-17-0068-58



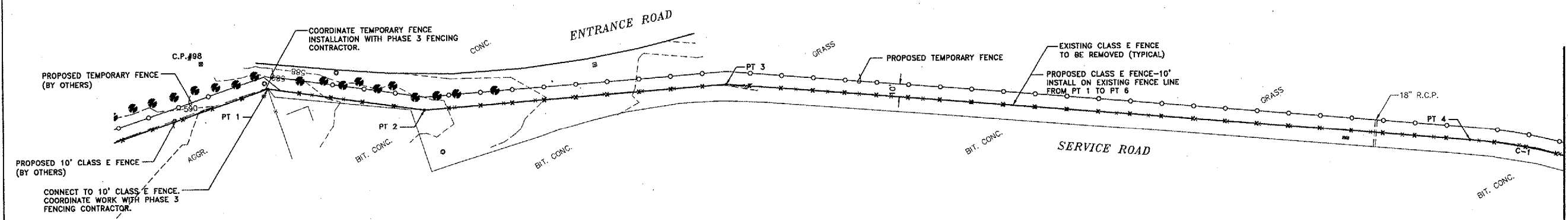
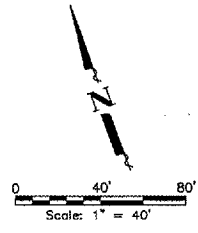
REVISIONS		
NO.	ITEM	DATE

PLOTTING SCALE: 1" = 400'
DRAWN BY: SPW
CHECKED BY:
DATE: SEPTEMBER 2006

McCLURE ENGINEERING ASSOCIATES, INC.
4700 Kennedy Drive
(309) 792-9350
East Moline, Illinois 61244
FAX (309) 792-8874
Design Firm License: Illinois #164-000816
Copyright © 2006 by McClure Engineering Associates, Inc.

SAFETY PLAN & INDEX MAP
QUAD CITY INTERNATIONAL AIRPORT
SECURITY FENCE - PHASE IV
MOLINE, ILLINOIS
FILE NAME: Y:\M0106.008\DWG\0808MOL.DWG(Safety-4)
JOB NUMBER: 01-29-06-191

MCCLURE CONTROL POINTS:
 C.P. #98: N 1743425.4740 E 2204939.9590 ELEV - 588.21
 C.P. #99: N 1742929.1750 E 2206409.9780 ELEV - 580.37

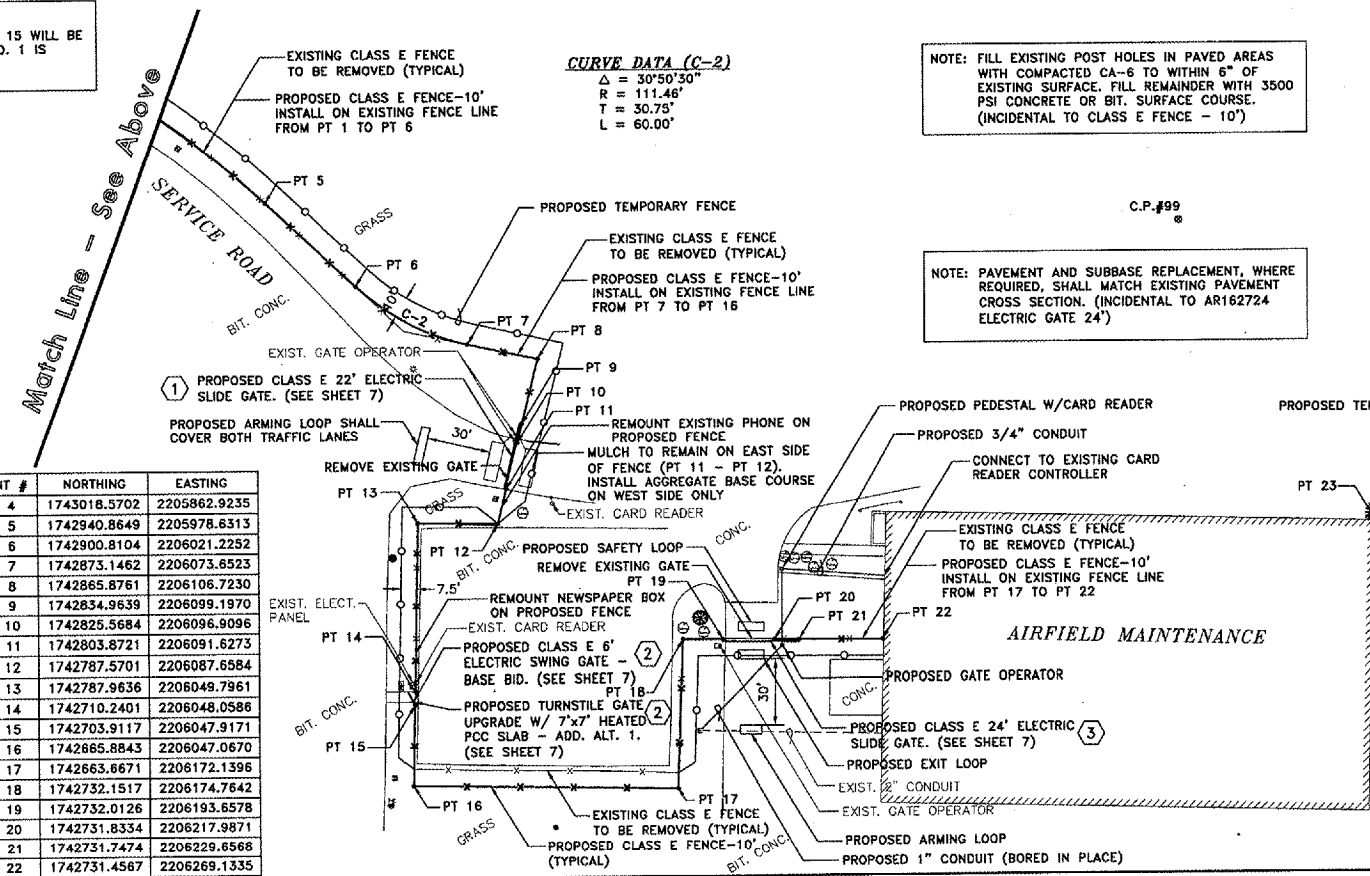


FROM POINT #	TO POINT #	LENGTH OF FENCE	POINT #	NORTHING	EASTING
PT 1	PT 2	125.41	PT 1	1743388.7025	2204982.8746
PT 2	PT 3	239.95	PT 2	1743329.7700	2205093.5700
PT 3	PT 4	591.92	PT 3	1743264.2968	2205324.4170
PT 4	PT 5	140.00	PT 4	1743018.5702	2205862.9235
			PT 5	1742940.8649	2205978.6313

CURVE DATA (C-1)
 $\Delta = 18^{\circ}42'44''$
 $R = 428.67'$
 $T = 70.63'$
 $L = 140.00'$

Match Line - See Below

NOTE: COORDINATES FOR POINTS 14 AND 15 WILL BE REVISED IF ADDITIVE ALTERNATE NO. 1 IS AWARDED.



CURVE DATA (C-2)
 $\Delta = 30^{\circ}50'30''$
 $R = 111.46'$
 $T = 30.75'$
 $L = 60.00'$

NOTE: FILL EXISTING POST HOLES IN PAVED AREAS WITH COMPACTED CA-6 TO WITHIN 6" OF EXISTING SURFACE. FILL REMAINDER WITH 3500 PSI CONCRETE OR BIT. SURFACE COURSE. (INCIDENTAL TO CLASS E FENCE - 10')

NOTE: PAVEMENT AND SUBBASE REPLACEMENT, WHERE REQUIRED, SHALL MATCH EXISTING PAVEMENT CROSS SECTION. (INCIDENTAL TO AR162724 ELECTRIC GATE 24')

FROM POINT #	TO POINT #	LENGTH OF FENCE
PT 4	PT 5	140.00
PT 5	PT 6	58.47
PT 6	PT 7	60.00
PT 7	PT 8	33.86
PT 8	PT 9	31.82
PT 9	PT 10	9.67
PT 10	PT 11	22' GATE
PT 11	PT 12	16.78
PT 12	PT 13	37.86
PT 13	PT 14	77.74
PT 14	PT 15	6' GATE
PT 15	PT 16	38.04
PT 16	PT 17	125.09
PT 17	PT 18	68.53
PT 18	PT 19	18.89
PT 19	PT 20	24' GATE
PT 20	PT 21	11.67
PT 21	PT 22	39.48

POINT #	NORTHING	EASTING
PT 4	1743018.5702	2205862.9235
PT 5	1742940.8649	2205978.6313
PT 6	1742900.8104	2206021.2252
PT 7	1742873.1462	2206073.6523
PT 8	1742865.8761	2206106.7230
PT 9	1742834.9639	2206099.1970
PT 10	1742825.5684	2206096.9096
PT 11	1742803.8721	2206091.6273
PT 12	1742787.5701	2206087.6584
PT 13	1742787.9636	2206049.7961
PT 14	1742710.2401	2206048.0588
PT 15	1742703.9117	2206047.9171
PT 16	1742665.8843	2206047.0670
PT 17	1742663.6671	2206172.1396
PT 18	1742732.1517	2206174.7642
PT 19	1742732.0126	2206193.6578
PT 20	1742731.8334	2206217.9871
PT 21	1742731.7474	2206229.6568
PT 22	1742731.4567	2206269.1335

FROM POINT #	TO POINT #	LENGTH OF FENCE
PT 23	PT 24	167.39
PT 24	PT 25	172.49
PT 25	PT 26	11.67
PT 26	PT 27	26' GATE
PT 27	PT 28	4.27
PT 28	PT 29	17.65
PT 29	PT 30	10.00
PT 30	PT 31	10.00
PT 31	PT 32	14.85

POINT #	NORTHING	EASTING
PT 23	1742785.5030	2206502.4870
PT 24	1742781.5107	2206669.8249
PT 25	1742953.9425	2206674.1764
PT 26	1742965.6088	2206674.4709
PT 27	1742991.9304	2206675.1351
PT 28	1742996.2015	2206675.2429
PT 29	1742995.7555	2206692.8872
PT 30	1743005.7523	2206693.1399
PT 31	1743005.4997	2206703.1367
PT 32	1743020.1410	2206703.5067

NOTE: GATE 3 SHALL BE COMPLETE AND OPERATIONAL BEFORE GATE 1 IS TAKEN OUT OF SERVICE.

Match Line - See Sheet 5

IL. PROJ: MLI - 3638 AIP PROJ: 3-17-0068-58



REVISIONS		
NO.	ITEM	DATE

PLOTTING SCALE: 1" = 40'
DRAWN BY: SPM
CHECKED BY:
DATE: SEPTEMBER 2006

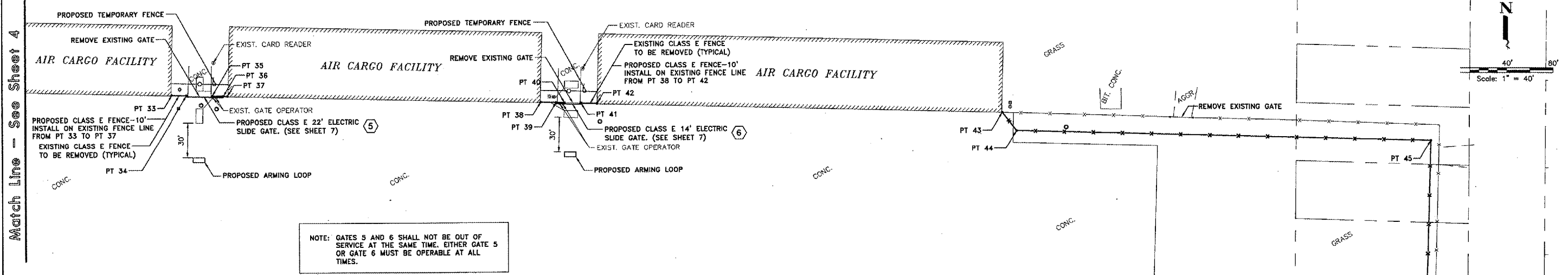
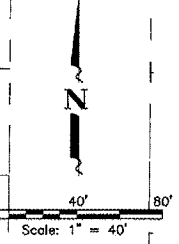
McCLURE ENGINEERING ASSOCIATES, INC.
 4700 Kennedy Drive (309) 792-8500
 East Moline, Illinois 61244 FAX (309) 792-8874
 Design Firm License: Illinois #14-000816
 Copyright © 2006 by McClure Engineering Associates, Inc.

GENERAL CONSTRUCTION PLAN
 QUAD CITY INTERNATIONAL AIRPORT SECURITY FENCE - PHASE IV
 Moline, Illinois
 FILE NAME: I:\MOLINE\0081\DWG\060808.DWG(C20)
 JOB NUMBER: 01-29-06-191

MCCLURE CONTROL POINTS:
 C.P. #97: N 1742666.7450 E 2207824.8346 ELEV - 572.73

QU002

NOTE: FILL EXISTING POST HOLES IN PAVED AREAS WITH COMPACTED CA-6 TO WITHIN 6" OF EXISTING SURFACE. FILL REMAINDER WITH 3500 PSI CONCRETE OR BIT. SURFACE COURSE. (INCIDENTAL TO CLASS E FENCE - 10')



NOTE: GATES 5 AND 6 SHALL NOT BE OUT OF SERVICE AT THE SAME TIME. EITHER GATE 5 OR GATE 6 MUST BE OPERABLE AT ALL TIMES.

FROM POINT #	TO POINT #	LENGTH OF FENCE
PT 33	PT 34	13.01
PT 34	PT 35	22' GATE
PT 35	PT 36	9.67
PT 36	PT 37	3.55

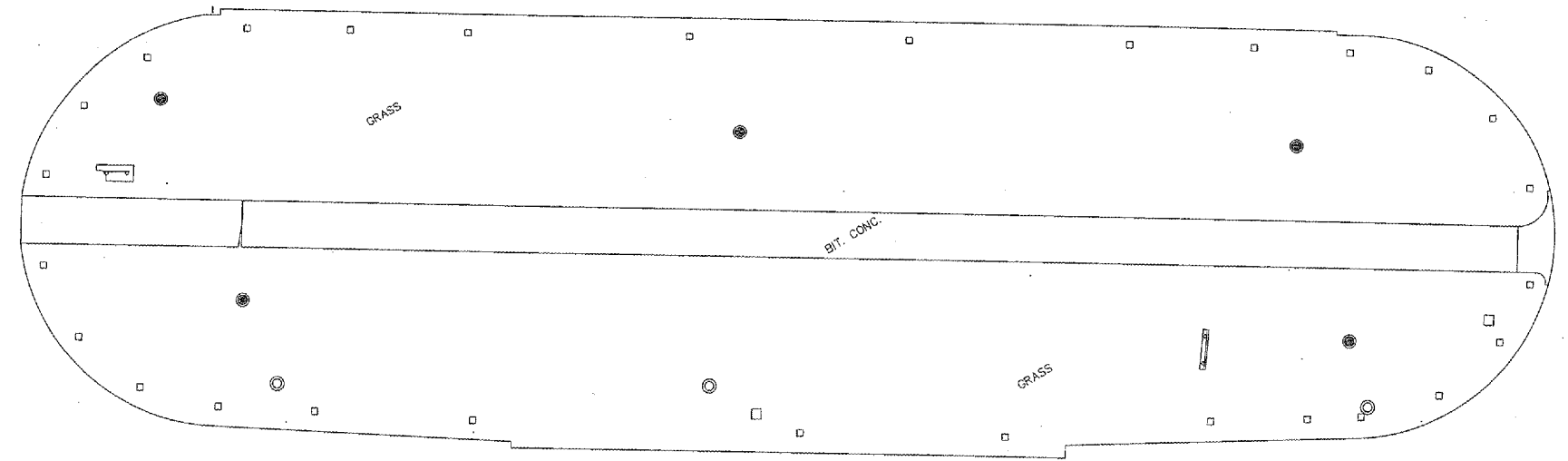
POINT #	NORTHING	EASTING
PT 33	1743013.6330	2206978.6656
PT 34	1743013.3422	2206991.6758
PT 35	1743012.8433	2207014.0002
PT 36	1743012.6273	2207023.6678
PT 37	1743012.5479	2207027.2218

FROM POINT #	TO POINT #	LENGTH OF FENCE
PT 38	PT 39	13.43
PT 39	PT 40	7.17
PT 40	PT 41	14' GATE
PT 41	PT 42	13.94

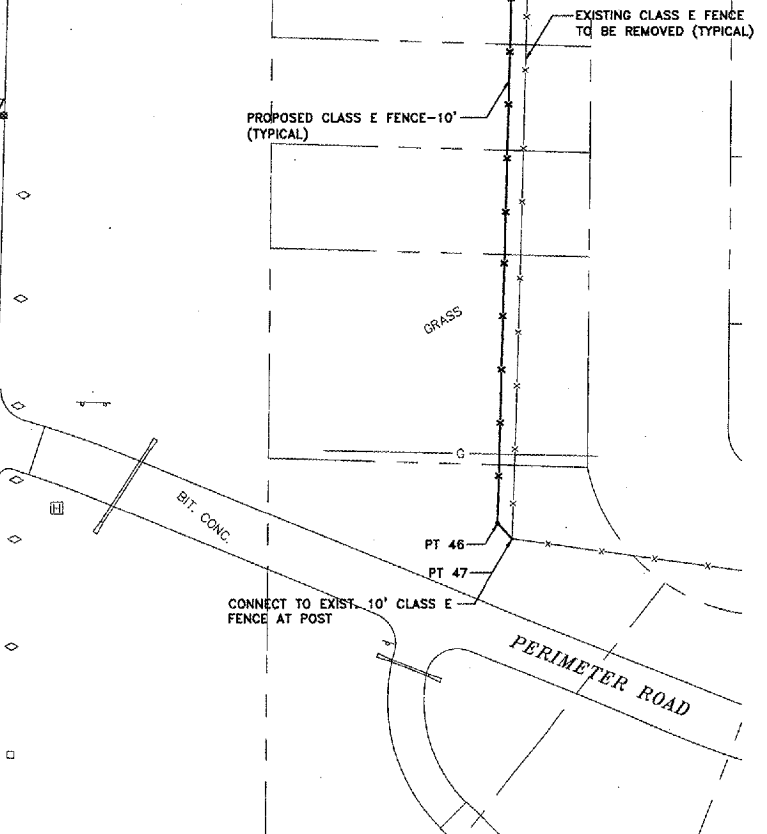
POINT #	NORTHING	EASTING
PT 38	1743008.1421	2207298.6330
PT 39	1743005.8044	2207312.0612
PT 40	1743005.6241	2207319.2290
PT 41	1743005.2637	2207333.5544
PT 42	1743004.9132	2207347.4897

FROM POINT #	TO POINT #	LENGTH OF FENCE
PT 43	PT 44	20.00
PT 44	PT 45	359.76
PT 45	PT 46	498.12
PT 46	PT 47	10.00

POINT #	NORTHING	EASTING
PT 43	1742995.6834	2207698.3464
PT 44	1742980.0419	2207710.8101
PT 45	1742971.6146	2208070.4683
PT 46	1742473.6651	2208057.4673
PT 47	1742466.4119	2208064.3514

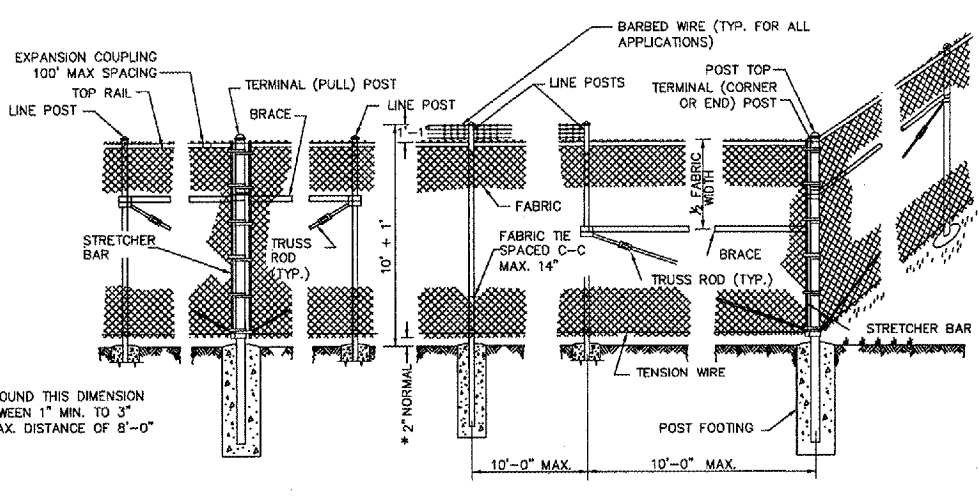
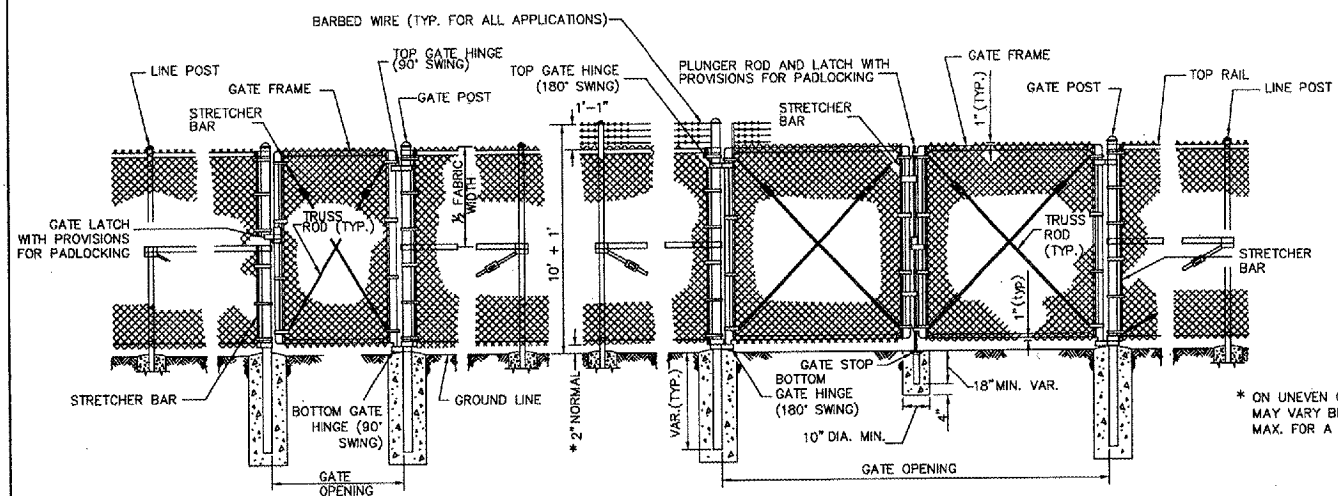


C.P. #97



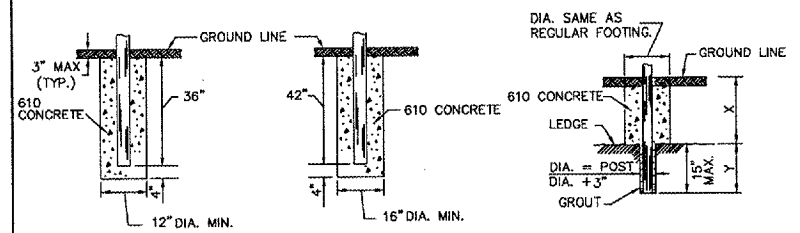
IL. PROJ: MLI - 3638 AIP PROJ: 3-17-0068-58

QUAD CITY INTERNATIONAL AIRPORT Moline, IL		<table border="1"> <thead> <tr> <th colspan="3">REVISIONS</th> </tr> <tr> <th>NO.</th> <th>ITEM</th> <th>DATE</th> </tr> </thead> <tbody> <tr> <td> </td> <td> </td> <td> </td> </tr> <tr> <td> </td> <td> </td> <td> </td> </tr> </tbody> </table>	REVISIONS			NO.	ITEM	DATE							PLOTTING SCALE: 1" = 40' DRAWN BY: SPW CHECKED BY: DATE: SEPTEMBER 2006	<p>McClure Engineering Associates, Inc. 4700 Kennedy Drive (309) 782-9350 East Moline, Illinois 61244 FAX (309) 782-8874 <small>Design Firm License: Illinois #154-000618 Copyright 2006 by McClure Engineering Associates, Inc.</small></p>	GENERAL CONSTRUCTION PLAN QUAD CITY INTERNATIONAL AIRPORT SECURITY FENCE - PHASE IV FILE NAME: X:\M0106.008\DWG\06008M04.DWG(C21) Moline, Illinois JOB NUMBER: 01-29-06-191	SHEET NO. 5 OF 7
REVISIONS																		
NO.	ITEM	DATE																

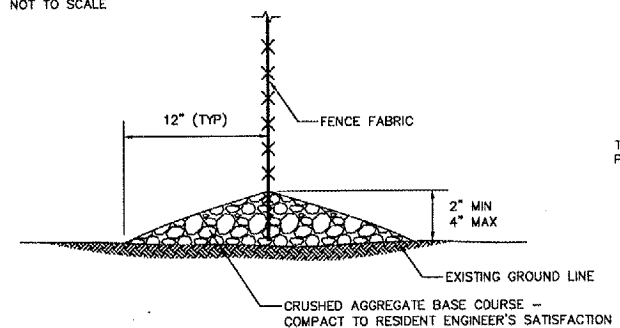


POST AND BRACE TABLE		
DESCRIPTION	DIA.-INCHES	WT.-LBS/FT
LINE POST	3.0	4.65
TERMINAL POST	4.0	6.56
END POST	4.0	6.56
CORNER POST	4.0	6.56
PULL POST	4.0	6.56
GATE FRAMES	2.0	2.28
GATE POST	4.0	9.10
TOP RAIL	1.625	1.84
HORIZONTAL BRACE	1.625	1.84

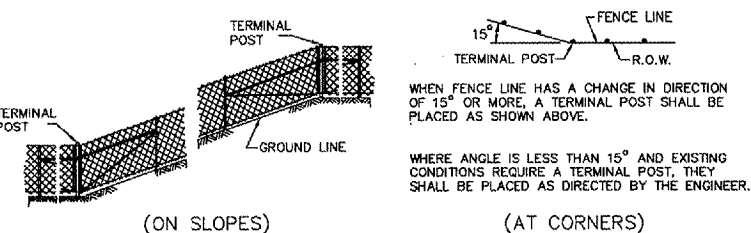
NOTE: SEE DETAIL SHEET FOR SLIDING GATES



NOTES: X + Y SHALL NOT EXCEED 24", 30" OR 36", AS APPLICABLE. WHEN X IS 0 TO 9", 15", OR 21", Y = 15", AND THE POST SHALL BE SHORTENED AS REQUIRED. WHEN X EXCEEDS 9", 15", OR 21", Y SHALL BE DECREASED CORRESPONDINGLY.



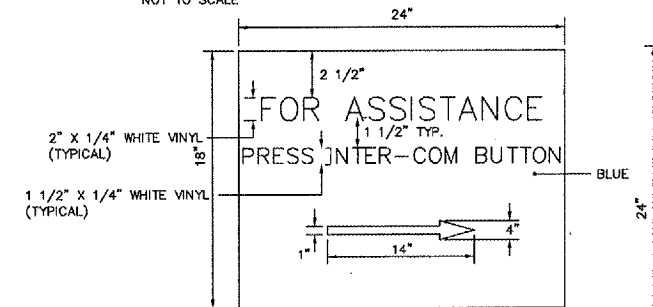
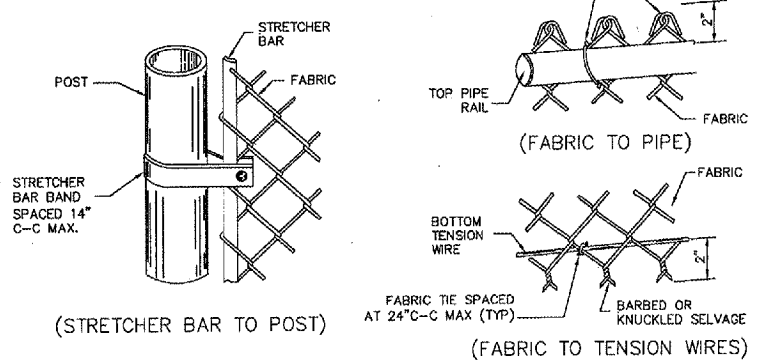
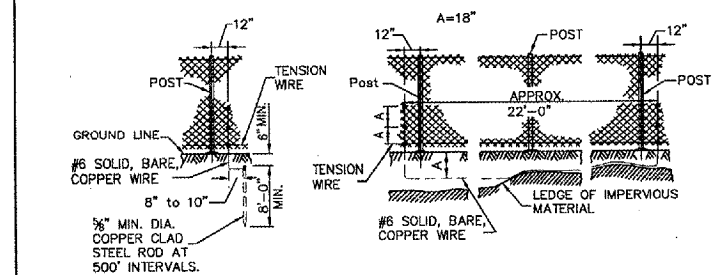
NOTE: HEIGHT OF FENCE ABOVE GROUND SHALL BE APPROVED PRIOR TO PLACING AGGREGATE



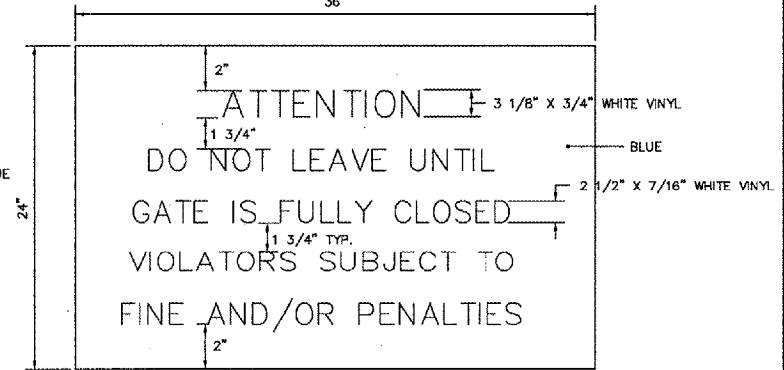
INSTALLATION DETAILS

GENERAL NOTES

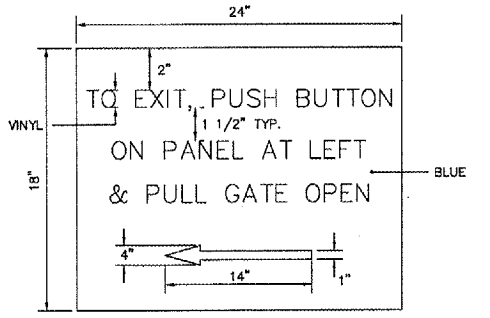
- 1.) PULL POSTS SHALL BE PLACED AT LOCATIONS DETERMINED BY THE ENGINEER. THEY SHALL BE PLACED AT 660' INTERVALS BETWEEN POSTS TO WHICH THE ENDS OF THE FABRIC ARE CLAMPED OR MIDWAY BETWEEN SUCH POSTS WHEN THE DISTANCE IS LESS THAN 1320' AND GREATER THAN 660'.
- 2.) TRUSS RODS SHALL BE 1/2" ROUND GALVANIZED STEEL ROD WITH GALVANIZED TURNBUCKLES. THE ZINC COATING SHALL NOT BE LESS THAN 1.2 OUNCES PER SQUARE FOOT OF SURFACE.
- 3.) "H" SECTION STRUCTURAL SHAPE AND SQUARE TUBULAR PIPE SHALL NOT BE ALLOWED.



LOCATION: EAST SIDE OF GATE NO. 2 MATCH ENTRANCE ROAD SIGNS AND COLORS INSTALL ON EAST SIDE OF FENCE NEAR GATE NO. 2 IF TURNSTILE GATE IS INSTALLED. FINAL TEXT TO BE DETERMINED BY MAA



LOCATION: AT ALL GATES ON BOTH SIDES OF THE FENCE MATCH ENTRANCE ROAD SIGNS AND COLORS



LOCATION: WEST SIDE OF GATE NO. 2 MATCH ENTRANCE ROAD SIGNS AND COLORS DELETE " & PULL GATE OPEN" FROM SIGN AND INSTALL ON WEST SIDE OF FENCE NEAR GATE NO. 2 IF TURNSTILE GATE IS INSTALLED. FINAL TEXT TO BE DETERMINED BY MAA.

- NOTES: 1.) 0.08 GA. ALUMINUM SHEET
2.) SIGNS AND INSTALLATION SHALL BE INCIDENTAL TO THE UNIT PRICE BID FOR CLASS E FENCE-10'

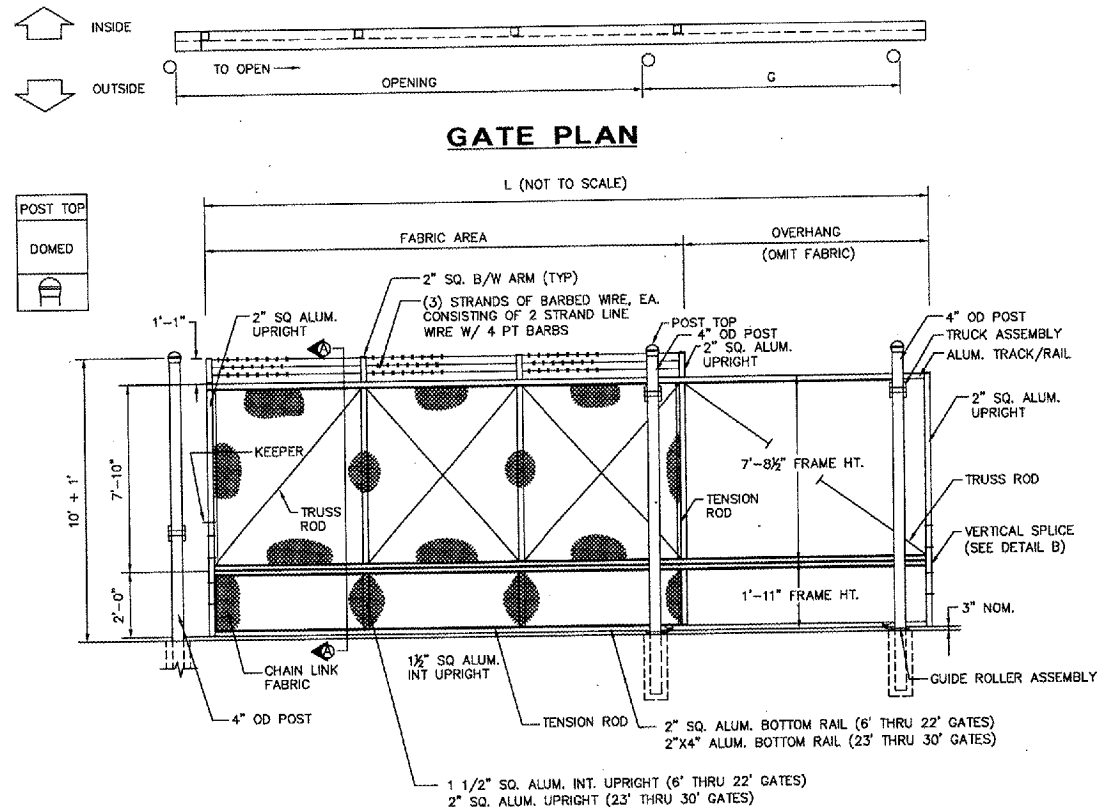


REVISIONS		
NO.	ITEM	DATE

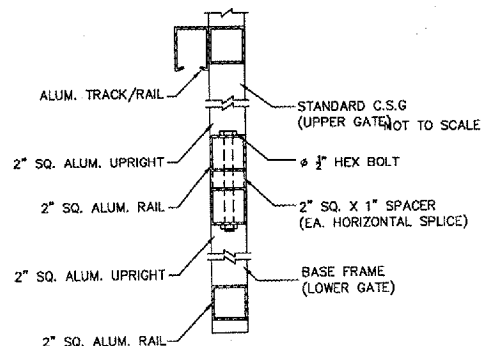
PLOTTING SCALE: 1" = 1'
DRAWN BY: SPW
CHECKED BY:
DATE: SEPTEMBER 2006

McCLURE ENGINEERING ASSOCIATES, INC.
4700 Kennedy Drive East Moline, Illinois 61224
(309) 792-9500 Fax (309) 792-8974
Design Firm License: Illinois #104-000616
Copyright © 2006 by McClure Engineering Associates, Inc.

FENCE DETAILS
QUAD CITY INTERNATIONAL AIRPORT SECURITY FENCE - PHASE IV
MOLINE, ILLINOIS
FILE NAME: T:\MOT06.008\DWG\06191003.DWG JOB NUMBER: 01-29-06-191

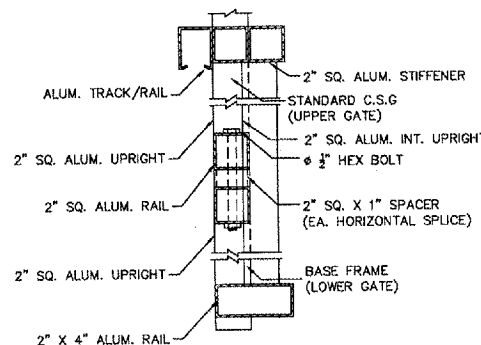


GATE ELEVATION (3 BAYS SHOWN)

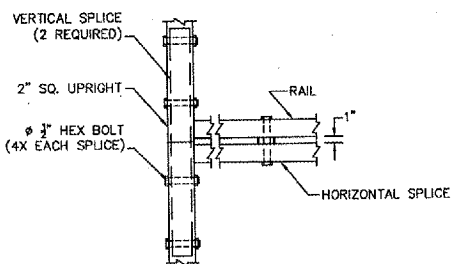


OPENING	LENGTH (L)	GATE POST (G)	BAYS	OVERHANG
1/8 POST FACE TO 1/8 POST FACE	O/S DIM OF GATE LEAF	O/S POST FACE TO O/S POST FACE	NUMBER OF BAYS WITH CHAIN LINK	NUMBER OF BAYS WITHOUT CHAIN LINK
14'-0"	21'-9"	7'-6"	(2) TWO	(1) ONE
22'-0"	32'-3"	10'-0"	(3) THREE	(1) ONE
24'-0"	36'-3"	12'-0"	(3) THREE	(2) TWO
26'-0"	38'-3"	12'-0"	(4) FOUR	(2) TWO

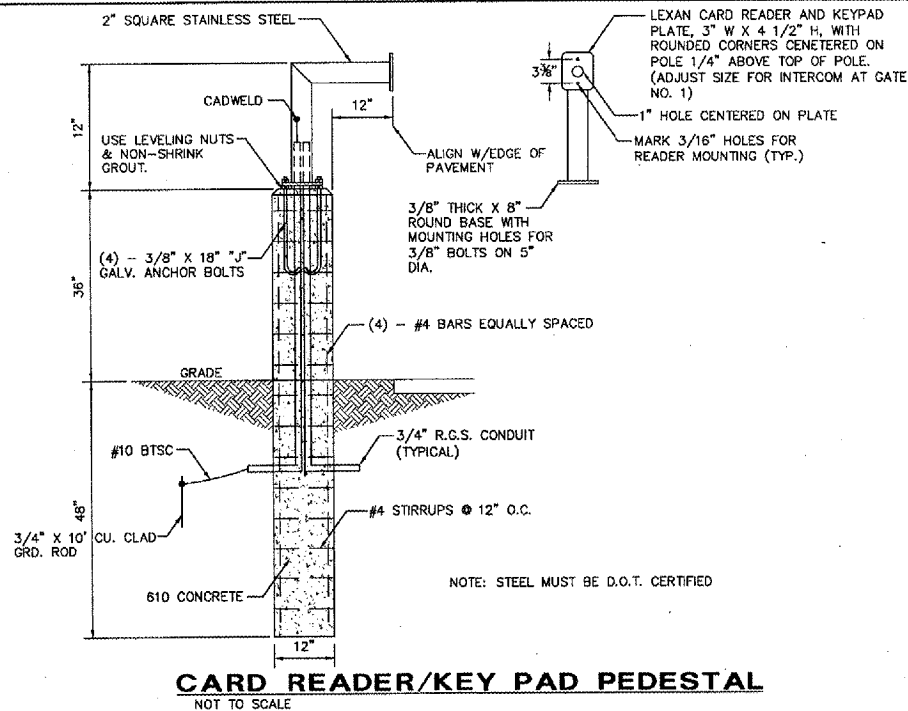
SECTION A (6'-22' GATES) NOT TO SCALE



SECTION A (23'-30' GATES) NOT TO SCALE



DETAIL B HORIZONTAL & VERTICAL SPLICE NOT TO SCALE



PROPOSED ELECTRIC GATE INFORMATION

NO.	LOCATION	SIZE	OPERATOR	ACCESS	OTHER COMPONENTS	REMARKS
1	SERVICE ROAD ACCESS	22' SLIDE	HYSECURITY 222CF, 1HP OR APPROVED EQUAL	NEW PEDESTAL AND CARD READER	REUSE EXISTING SAFETY AND EXIT LOOPS RECOUNT EXISTING TELEPHONE	INSTALL ARMING LOOP, REINSTALL ALL SECURITY ALARM CONTACTS
2	ARFF/MAINT. PARKING LOT	6' SWING	NONE	NEW CARD READER AND INTERCOM ON EXISTING PEDESTAL. NEW PUSH BUTTON OUT, MAG LOCK	INSTALL HYDRAULIC GATE CLOSER - SENTINAL SN55 OR EQUAL REPLACE EXIST. ELECT. PANEL W/16"x16"x6" NEMA 4X ENCLOSURE W/ PUSH BUTTON ON DOOR	INSTALL CLOSURE CONFIRMATION SENSOR
3	AIRFIELD MAINTENANCE	24' SLIDE	LIFTMASTER SL 585, 1HP OR APPROVED EQUAL	NEW PEDESTAL AND CARD READER, REPROGRAM SECURITY SYSTEM FOR CARD READER	RECONNECT EXISTING PUSH BUTTON STATION INSIDE MAINT. BUILDING	INSTALL SAFETY, EXIT AND ARMING LOOPS REINSTALL ALL SECURITY ALARM CONTACTS
4	AIR CARGO 1 ENTRANCE	26' SLIDE	LIFTMASTER SL 585, 1HP OR APPROVED EQUAL	REUSE EXISTING PUSH BUTTON ON LIGHT POLE	REUSE EXISTING SAFETY & EXIT LOOPS	INSTALL ARMING LOOP, REINSTALL ALL SECURITY ALARM CONTACTS
5	BETWEEN AIR CARGO 1 & 2	22' SLIDE	LIFTMASTER SL 585, 1HP OR APPROVED EQUAL	NEW PEDESTAL AND CARD READER	REUSE EXISTING SAFETY & EXIT LOOPS	INSTALL ARMING LOOP, REINSTALL ALL SECURITY ALARM CONTACTS
6	BETWEEN AIR CARGO 2 & 3	14' SLIDE	LIFTMASTER SL 585, 1HP OR APPROVED EQUAL	NEW PEDESTAL AND CARD READER	REUSE EXISTING SAFETY & EXIT LOOPS	INSTALL ARMING LOOP, REINSTALL ALL SECURITY ALARM CONTACTS

PROPOSED ADDITIVE ALTERNATE NO. 1 - TURNSTILE GATE UPGRADE

NO.	LOCATION	SIZE	OPERATOR	ACCESS	OTHER COMPONENTS	REMARKS
2	ARFF/MAINT. PARKING LOT	5' TURNSTILE	NONE	NEW CARD READER AND INTERCOM, "FREE" OUT	REMOVE EXISTING PEDESTAL AND CARD READER. REPLACE EXISTING ELECTRICAL PANEL W/ NEMA 4X ENCLOSURE W/ PUSH BUTTON ON DOOR. INSTALL NEW 20/2 BREAKER IN EM-1 IN ARFF BUILDING.	IF ADD. ALT. NO. 1 IS AWARDED THE TURNSTILE GATE WILL BE INSTALLED IN LIEU OF THE 6' SWING GATE.

NOTES:

- CARD READER SHALL BE INDALA LEGACY WALLSWITCH PROXIMITY READERS OR APPROVED EQUAL.
- INTERCOM AT GATE NO. 2 SHALL BE AIPHONE CATALOG NUMBER NE-JA OR APPROVED EQUAL.
- GATE AND OPERATOR INSTALLATION SHALL INCLUDE CARD READERS, INTERCOMS, PEDESTALS AND TRAFFIC LOOPS AS DESCRIBED ABOVE AND SHOWN ON THE PLANS FOR EACH INDIVIDUAL GATE, AS WELL AS, RECONNECTION OF ITEMS SHOWN TO BE REUSED.
- INSTALLATION SHALL ALSO INCLUDE, BUT NOT BE LIMITED TO, ALL CONDUIT, CABLE, WIRING, JUNCTION BOXES, SERVICE DISCONNECTS, WATERPROOF SPLICES AND CONCRETE OPERATOR PADS AS REQUIRED TO COMPLETE EACH ELECTRIC GATE SYSTEM.
- THE CONTRACTOR SHALL FIELD VERIFY EXISTING VOLTAGE AND CURRENT AT EACH LOCATION, AS WELL AS, MEASUREMENTS, CONSTRUCTION CRITERIA, MATERIAL REQUIREMENTS AND SIMILAR DATA TO ENSURE COMPLETION OF THE WORK TO THE PROPOSED REQUIREMENTS.
- THE CONTRACTOR SHALL SUBMIT SHOP DRAWINGS AND BY DOING SO REPRESENTS THAT THEY HAVE DETERMINED AND VERIFIED ALL FIELD MEASUREMENTS, FIELD CONSTRUCTION CRITERIA, MATERIALS, CATALOG NUMBERS AND SIMILAR DATA AND THAT THEY HAVE CHECKED AND COORDINATED THE INFORMATION CONTAINED IN SUCH SUBMITTALS WITH THE REQUIREMENTS OF THE WORK AND THE SPECIAL PROVISIONS.