

STATE OF ILLINOIS  
DEPARTMENT OF TRANSPORTATION

F.A.P. RTE.	SECTION	COUNTY	TOTAL SHEETS	SHEET NO.
320	D7 PATCHING 2018-3	MOULTRIE	3	1
		ILLINOIS	CONTRACT NO. 74804	

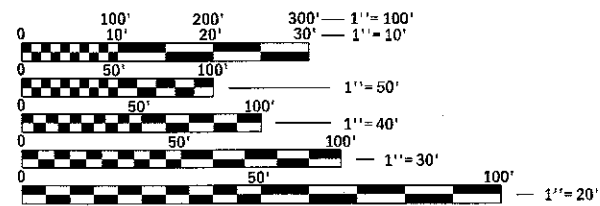
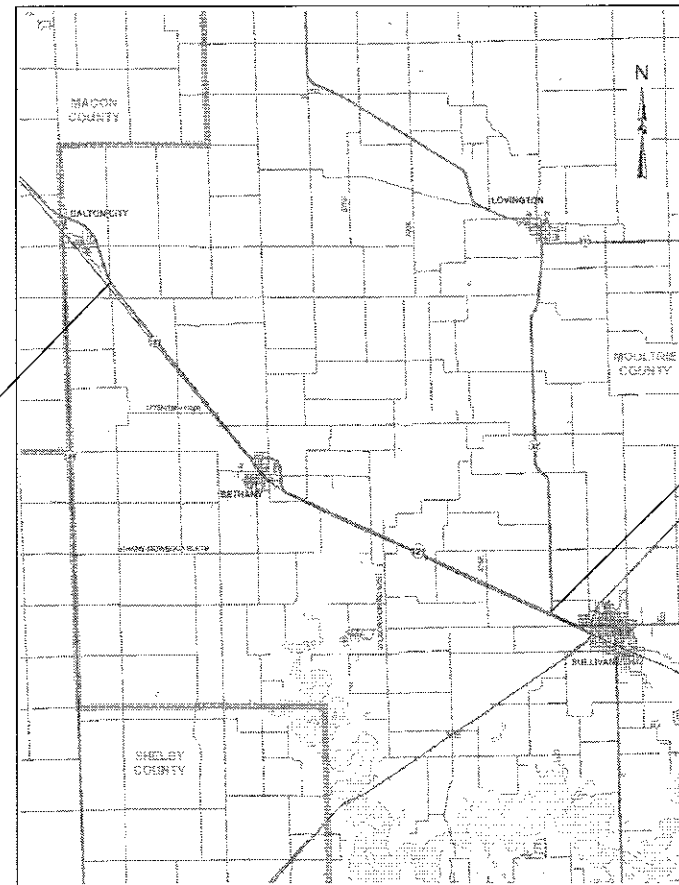
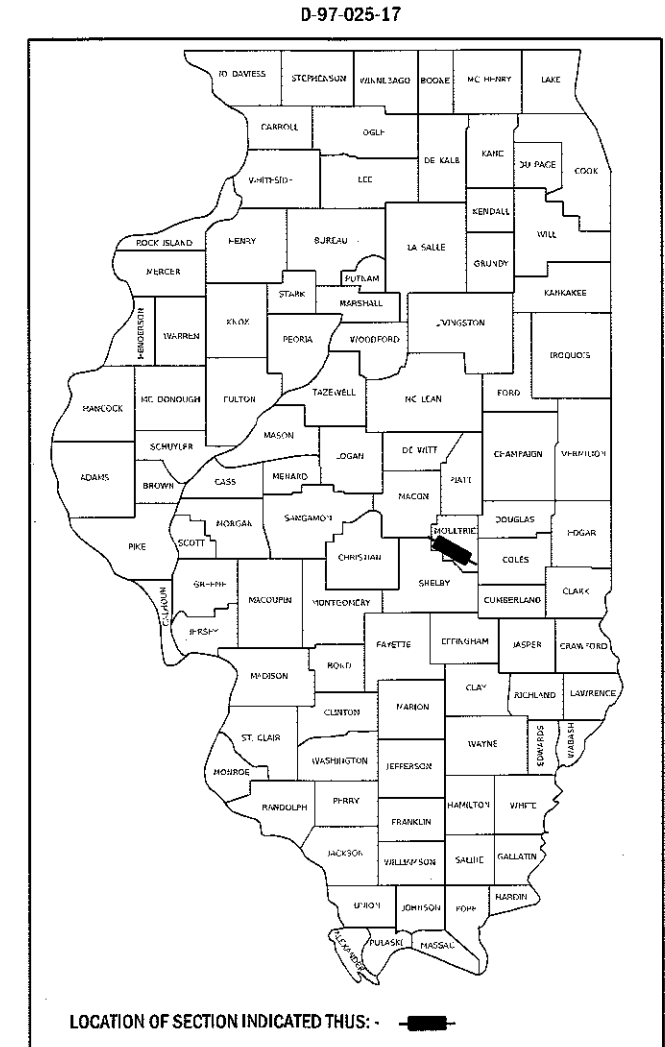
FOR INDEX OF SHEETS, SEE SHEET NO. 2  
ADT = 5300 (2015)

PROPOSED  
HIGHWAY PLANS

F.A.P. ROUTE 320 (ILL 121)  
SECTION D7 PATCHING 2018-3

PATCHING  
MOULTRIE COUNTY

C-97-058-17



FULL SIZE PLANS HAVE BEEN PREPARED USING STANDARD ENGINEERING SCALES. REDUCED SIZED PLANS WILL NOT CONFORM TO STANDARD SCALES. IN MAKING MEASUREMENTS ON REDUCED PLANS, THE ABOVE SCALES MAY BE USED.

J.U.L.I.E.  
JOINT UTILITY LOCATION INFORMATION FOR EXCAVATION  
1-800-892-0123  
OR 811

PROJECT ENGINEER: TOM RONAN  
PROJECT MANAGER: TOM RONAN  
PHONE: (217) 342-8320  
CONTRACT NO. 74804

GROSS LENGTH = 59505.60 FT. = 11.270 MILE  
NET LENGTH = 59505.60 FT. = 11.270 MILE

STATE OF ILLINOIS  
DEPARTMENT OF TRANSPORTATION

SUBMITTED August 16 20 17  
Jeffrey M. Smith  
REGIONAL ENGINEER

Oct 13 20 17  
Maurice M. Addis PE  
ENGINEER OF DESIGN AND ENVIRONMENT

Oct 13 20 17  
Maurice M. Addis  
DIRECTOR OF PROGRAM DEVELOPMENT

PRINTED BY THE AUTHORITY  
OF THE STATE OF ILLINOIS

## INDEX OF SHEETS

SHEET NO.	ITEM
1	COVER SHEET
2	INDEX OF SHEETS, GENERAL NOTES, & PATCHING SCHEDULE
3	SUMMARY OF QUANTITIES

THE FOLLOWING STANDARDS ARE A PART OF THESE PLANS AND ARE INCLUDED AFTER SHEET NO. 3:

STD. NO.	DESCRIPTION
000001-06	STANDARD SYMBOLS, ABBREVIATIONS AND PATTERNS
001006	DECIMAL OF AN INCH AND OF A FOOT
442201-03	CLASS C AND D PATCHES
701001-02	OFF-ROAD OPERATIONS, 2L, 2W, MORE THAN 15' AWAY
701006-05	OFF-ROAD OPERATIONS, 2L, 2W, 15' TO 24" FROM PAVEMENT EDGE
701011-04	OFF-ROAD MOVING OPERATIONS, 2L, 2W, DAY ONLY
701201-04	LANE CLOSURE, 2L, 2W, DAY ONLY, FOR SPEEDS ≥ 45 MPH
701301-04	LANE CLOSURE, 2L, 2W, SHORT TIME OPERATIONS
701901-06	TRAFFIC CONTROL DEVICES

## GENERAL NOTES

THIS SECTION SHALL BE CONSTRUCTED IN ACCORDANCE WITH THE PLANS; THE "STANDARD SPECIFICATIONS FOR ROAD AND BRIDGE CONSTRUCTION" ADOPTED APRIL 1, 2016; AND THE SPECIAL PROVISIONS INCLUDED IN THE PROPOSAL.

THE WORK ON THIS PROJECT IS LOCATED ON ILLINOIS ROUTE 121 IN MOULTRIE COUNTY. THE PROJECT BEGINS 0.7 MILES SOUTHEAST OF DALTON CITY AND EXTENDS SOUTHEAST FOR 11.27 MILES TO THE JUNCTION OF ILLINOIS ROUTE 32 AT THE WEST CORPORATE LIMITS OF SULLIVAN. THE WORK INCLUDED IN SECTION 07 PATCHING 2018-3 CONSISTS OF CLASS D PAVEMENT PATCHING, TRAFFIC CONTROL, AND ANY OTHER WORK NECESSARY TO COMPLETE THE SECTION.

THE ESTIMATED NUMBER OF PATCHES IS AS FOLLOWS:

	TYPE I	TYPE II	TYPE III	TYPE IV
NORTHBOUND	13	82	6	11
SOUTHBOUND	6	62	6	11

THE ACTUAL LOCATIONS OF PAVEMENT PATCHING AND FINAL QUANTITIES SHALL BE DETERMINED BY THE ENGINEER IN THE FIELD.

THE FOLLOWING MIXTURE REQUIREMENT IS APPLICABLE TO THIS PROJECT:

### PAVEMENT PATCHING

APPLICATION:	HOT-MIX ASPHALT BINDER COURSE, IL-19.0, N70
PG GRADE:	PG 64-22
DESIGN AIR VOIDS:	4.0% @ NDESIGN = 70
MIXTURE COMPOSITION:	IL-19.0
FRICTION AGGREGATE:	N/A

## SCHEDULE OF QUANTITIES

PATCHING SCHEDULE	CLASS D PATCHES, TYPE I, 16"	CLASS D PATCHES, TYPE II, 16"	CLASS D PATCHES, TYPE III, 16"	CLASS D PATCHES, TYPE IV, 16"
	SQ YD	SQ YD	SQ YD	SQ YD
NORTHBOUND	52	743	109	620
SOUTHBOUND	24	510	116	487
PROJECT TOTALS	76	1253	225	1107

MODEL: D:\p01\...  
FILE NAME: D:\p01\...  
PROJECT: 74804\CD\DATA\CD\98010774804.dwg

USER NAME = steffennk	DESIGNED -	REVISED -
PLOT SCALE = 100.0000' / in.	DRAWN -	REVISED -
PLOT DATE = 8/23/2017	CHECKED -	REVISED -
	DATE -	REVISED -

DESIGNED -	REVISED -
DRAWN -	REVISED -
CHECKED -	REVISED -
DATE -	REVISED -

STATE OF ILLINOIS  
DEPARTMENT OF TRANSPORTATION

### INDEX OF SHEETS, GENERAL NOTES & SCHEDULE OF QUANTITIES

SCALE: SHEET OF SHEETS STA. TO STA.

F.A.P. RTE.	SECTION	COUNTY	TOTAL SHEETS	SHEET NO.
320	07 PATCHING 2018-3	MOULTRIE	3	2
CONTRACT NO. 74804				
ILLINOIS FED. AID PROJECT				

