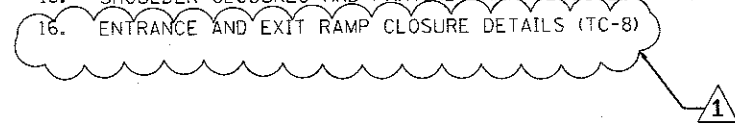


INDEX OF SHEETS

1. COVER SHEET
2. INDEX OF SHEETS, STATE STANDARDS, GENERAL NOTES AND GENERAL PAINT NOTES
3. SUMMARY OF QUANTITIES
- 4-7. SUBSTRUCTURE REPAIR SHEETS (SN 016-0821)
- 8-11. SUBSTRUCTURE REPAIR SHEETS (SN 016-0826)
12. STAGING TYPICAL SECTIONS
- 13-14. TRAFFIC CONTROL PLAN
15. SHOULDER CLOSURES AND PARTIAL RAMP CLOSURES (TC-17)
16. ENTRANCE AND EXIT RAMP CLOSURE DETAILS (TC-8)



STATE STANDARDS

STANDARD NO.	DESCRIPTION
643001-02	SAND MODULE IMPACT ATTENUATORS
701106-02	OFF-ROAD OPERATIONS, MULTILANE, MORE THAN 15' AWAY
701400-09	APPROACH TO LANE CLOSURE, FREEWAY/EXPRESSWAY
701401-09	LANE CLOSURE, FREEWAY/EXPRESSWAY
701411-09	LANE CLOSURE, MULTI-LANE, TRAFFIC CONTROL AT ENTRANCE OR EXIT RAMP, FOR SPEEDS > 45 MPH
701428-01	TRAFFIC CONTROL SETUP REMOVAL FREEWAY / EXPRESSWAY
701446-08	TWO LANE CLOSURE, FREEWAY/EXPRESSWAY
701901-06	TRAFFIC CONTROL DEVICES
704001-08	TEMPORARY CONCRETE BARRIER

GENERAL NOTES

BEFORE STARTING ANY EXCAVATION, THE CONTRACTOR SHALL CALL "J.U.L.I.E." (800) 892-0123 OR 811 FOR FIELD LOCATIONS OF BURIED ELECTRIC, TELEPHONE AND GAS UTILITIES. (48 HOUR NOTIFICATION IS REQUIRED).

THE CONTRACTOR SHALL COORDINATE CONSTRUCTION ACTIVITIES WITH UTILITY COMPANIES, THE VILLAGES OF MORTON GROVE AND THE GLENVIEW.

THE CONTRACTOR WILL NOT BE ALLOWED TO SET UP A YARD OR FIELD OFFICE ON STATE PROPERTY WITHOUT WRITTEN PERMISSION FROM THE DEPARTMENT.

THE CONTRACTOR SHALL CONTACT THE DISTRICT ONE TRAFFIC CONTROL SUPERVISOR AT (847) 705-4151 FOR EXPRESSWAYS A MINIMUM OF 72 HOURS IN ADVANCE OF BEGINNING WORK.

THE CONTRACTOR SHALL BE REQUIRED TO PROVIDE ACCESS TO ABUTTING PROPERTY AT ALL TIMES DURING THE CONSTRUCTION OF THIS PROJECT.

DO NOT SCALE PLANS FOR CONSTRUCTION DIMENSIONS.

THESE PLANS HAVE BEEN PREPARED FROM NOTES RECEIVED FROM THE BUREAU OF MAINTENANCE BRIDGE INSPECTORS.

PLAN DIMENSIONS AND DETAILS RELATIVE TO EXISTING PLANS ARE SUBJECT TO NOMINAL CONSTRUCTION VARIATIONS. THE CONTRACTOR SHALL FIELD VERIFY EXISTING DIMENSIONS AND DETAILS AFFECTING NEW CONSTRUCTION AND MAKE NECESSARY APPROVED ADJUSTMENTS PRIOR TO CONSTRUCTION OR ORDERING OF MATERIALS. SUCH VARIATIONS SHALL NOT BE CAUSE FOR ADDITIONAL COMPENSATION FOR A CHANGE IN SCOPE OF THE WORK, HOWEVER, THE CONTRACTOR WILL BE PAID FOR THE QUANTITY ACTUALLY FURNISHED BASED AT THE UNIT PRICE BID FOR THE WORK.

THE CONTRACTOR SHALL REQUEST AND GAIN APPROVAL FROM THE ILLINOIS DEPARTMENT OF TRANSPORTATION'S EXPRESSWAY TRAFFIC OPERATIONS ENGINEER AT WWW.IDOT.ILCS.COM TWENTY-FOUR (24) HOURS IN ADVANCE OF ALL DAILY LANE, RAMP AND SHOULDER CLOSURES.

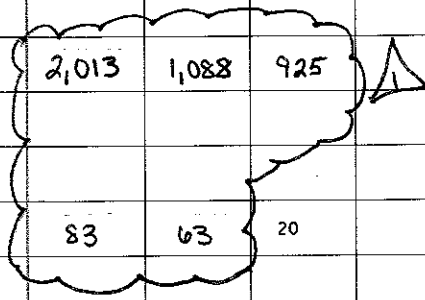


-REVISED 10-26-2017

FILE NAME =	USER NAME = saintvlch	DESIGNED =	REVISED =	STATE OF ILLINOIS DEPARTMENT OF TRANSPORTATION	INDEX OF SHEETS, STATE STANDARDS AND GENERAL I-94 (EDENS EXPRESSWAY) AT GLENVIEW RD. AND LINCOLN AVE.		F.A.I. RTE.	SECTION	COUNTY	TOTAL SHEETS	SHEET NO.		
Default		CHECKED =	REVISED =		SCALE:	SHEET	OF	SHEETS	STA.	TO STA.			
		DATE =	REVISED =						94	2017-0191	COOK	16	2
		PLOT DATE = 10/17/2017							ILLINOIS FED. AID PROJECT CONTRACT NO. 62F38				

URBAN 100% STATE

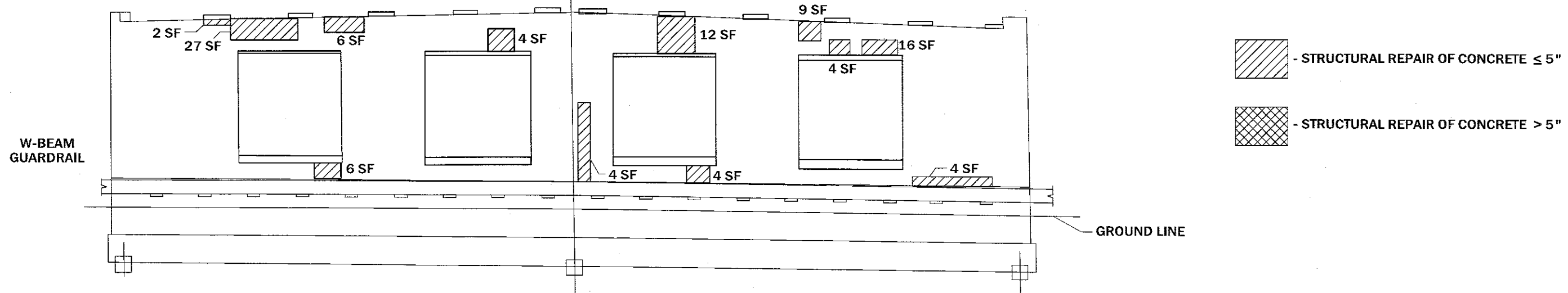
SUMMARY OF QUANTITIES			CONSTRUCTION TYPE CODE			
CODE NO	ITEM	UNIT	TOTAL QUANTITIES	0013 BRIDGE 1 016-0821	0013 BRIDGE 2 016-0826	
67000400	ENGINEER'S FIELD OFFICE, TYPE A	CAL MO	6	3	3	
67100100	MOBILIZATION	LSUM	1	0.5	0.5	
70400100	TEMPORARY CONCRETE BARRIER	FOOT	200	100	100	
70600250	IMPACT ATTENUATORS, TEMPORARY (NON-REDIRECTIVE), TEST LEVEL 3	EACH	2	1	1	
X7010410	SPEED DISPLAY TRAILER	CAL MO	2	1	1	
X7011015	TRAFFIC CONTROL AND PROTECTION (EXPRESSWAYS)	LSUM	1	0.5	0.5	
X7015005	CHANGEABLE MESSAGE SIGN	CAL DA	60	30	30	
X7040125	PINNING TEMPORARY CONCRETE BARRIER	EACH	12	6	6	
Z0012754	STRUCTURAL REPAIR OF CONCRETE (DEPTH EQUAL TO OR LESS THAN 5 INCHES)	SO FT	2,013	1,088	925	
Z0012755	STRUCTURAL REPAIR OF CONCRETE (DEPTH GREATER THAN 5 INCHES)	SO FT	83	63	20	
Z0073200	TEMPORARY SHORING AND CRIBBING	EACH	13	11	2	



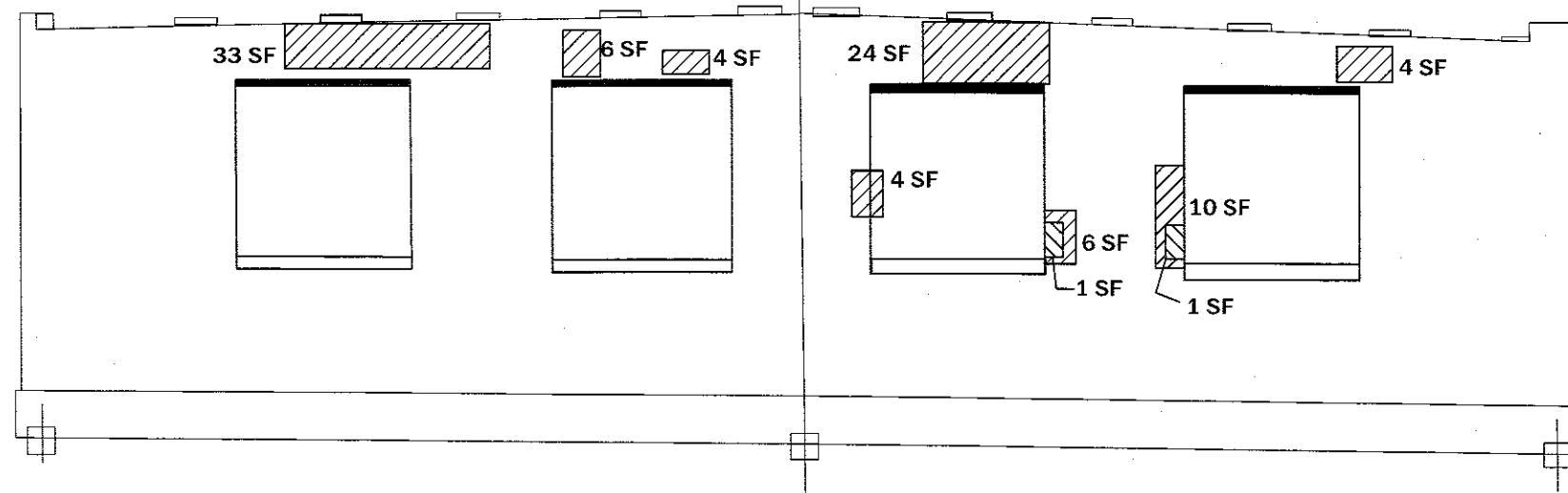
SUMMARY OF QUANTITIES			CONSTRUCTION TYPE CODE			
CODE NO	ITEM	UNIT	TOTAL QUANTITIES	0014 BRIDGE 1 016-0821	0014 BRIDGE 2 016-0826	

REV 10-26-2017

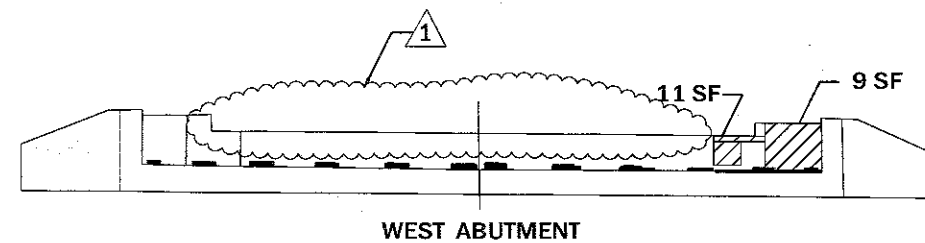
FOR INFORMATION ONLY



EAST PIER - WEST ELEVATION



EAST PIER - EAST ELEVATION



REACTIONS SN 016-0821

INTERIOR GIRDER REACTION TABLE					
	W. ABUTMENT	PIER 1	PIER 2	PIER 3	E. ABUTMENT
R DL (k)	18.9	63.6	64.0	63.6	18.9
R LL (k)	30.6	38.3	39.3	38.3	30.6
R IMP (k)	8.7	10.5	10.4	10.5	8.7
R (total) (k)	58.2	112.4	113.7	112.4	58.2

TOTAL BILL OF MATERIAL

ITEM	UNIT	QUANTITY
STRUCTURAL REPAIR OF CONCRETE ≤ 5 INCHES	SQ FT	1,088
STRUCTURAL REPAIR OF CONCRETE > 5 INCHES	SQ FT	63
TEMPORARY SHORING	EACH	11

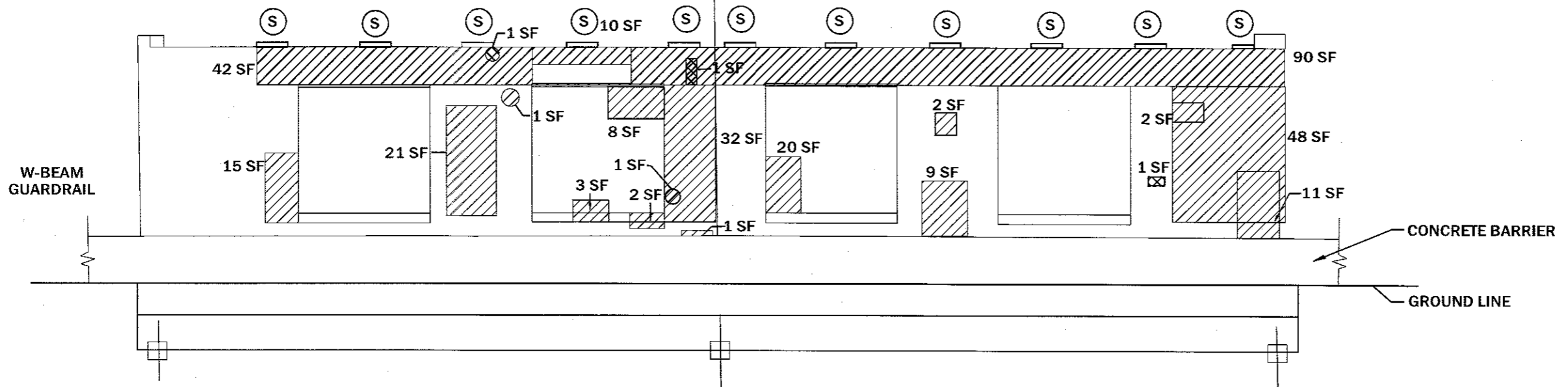
EAST PIER REPAIRS BILL OF MATERIAL (SN 016-0821)

ITEM	UNIT	QUANTITY
STRUCTURAL REPAIR OF CONCRETE ≤ 5 INCHES	SQ FT	211
STRUCTURAL REPAIR OF CONCRETE > 5 INCHES	SQ FT	8

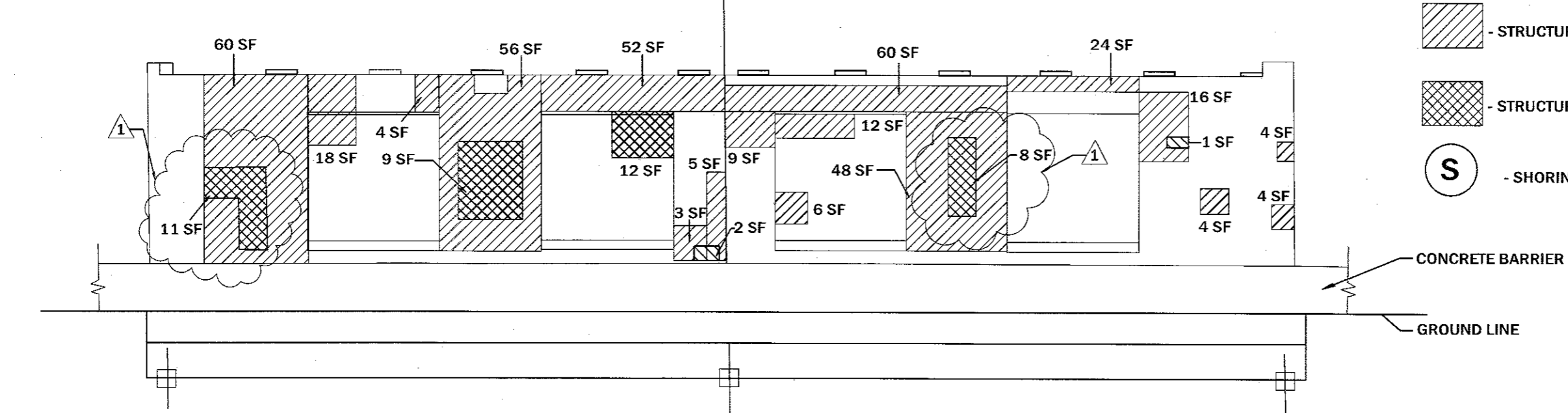
1 -REVISED 10-26-2017

MODEL: Default
 FILE NAME: \\s:\illinois\project\016\0821\016-0821.dgn

FOR INFORMATION ONLY



CENTER PIER - WEST ELEVATION



CENTER PIER - EAST ELEVATION

- STRUCTURAL REPAIR OF CONCRETE ≤ 5"
- STRUCTURAL REPAIR OF CONCRETE > 5"
- SHORING - 11 EACH

CENTER PIER REPAIRS BILL OF MATERIAL

ITEM	UNIT	QUANTITY
STRUCTURAL REPAIR OF CONCRETE ≤ 5 INCHES	SQ FT	716
STRUCTURAL REPAIR OF CONCRETE > 5 INCHES	SQ FT	42
TEMPORARY SHORING	EACH	11

1 -REVISED 10-26-2017

MODEL: D:\dwg\... FILE NAME: ... PROJECT: ...

USER NAME = saintvch	DESIGNED -	REVISED -
PLOT SCALE = 100.0000' / in.	DRAWN -	REVISED -
PLOT DATE = 10/16/2017	CHECKED -	REVISED -
	DATE -	REVISED -

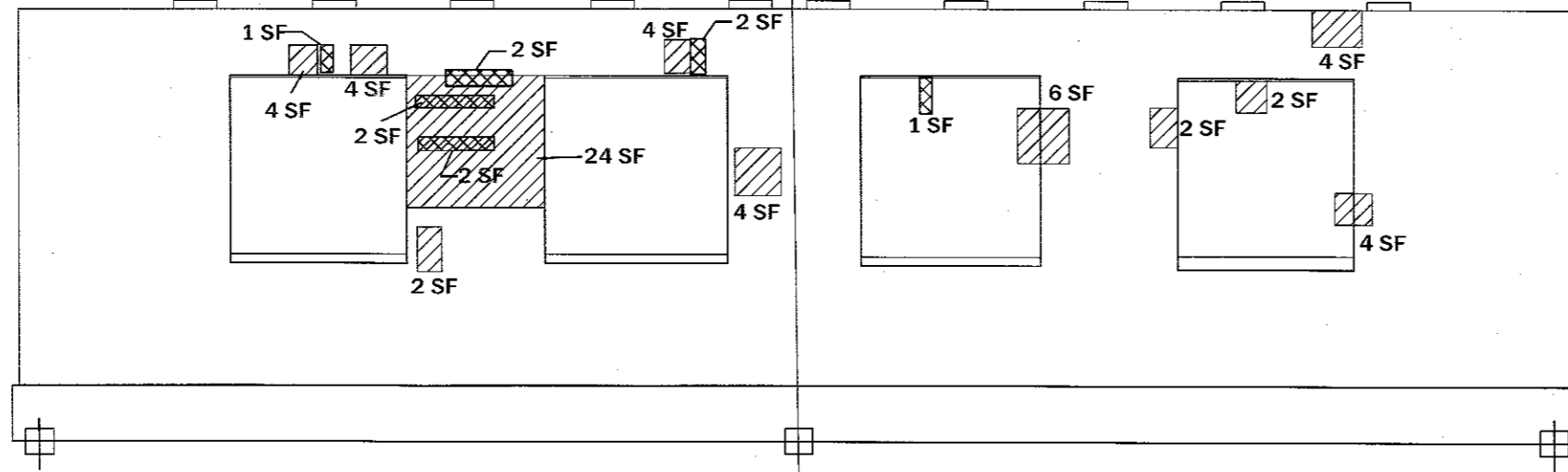
**STATE OF ILLINOIS
DEPARTMENT OF TRANSPORTATION**

**I-94 EDENS EXPWY AT GLENVIEW ROAD (SN 016-0821)
CENTRAL PIER REPAIRS**

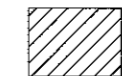

F.A.I. RTE. 94	SECTION 2017-0191	COUNTY COOK	TOTAL SHEETS 16	SHEET NO. 6
				CONTRACT NO. 62F38
ILLINOIS FED. AID PROJECT				

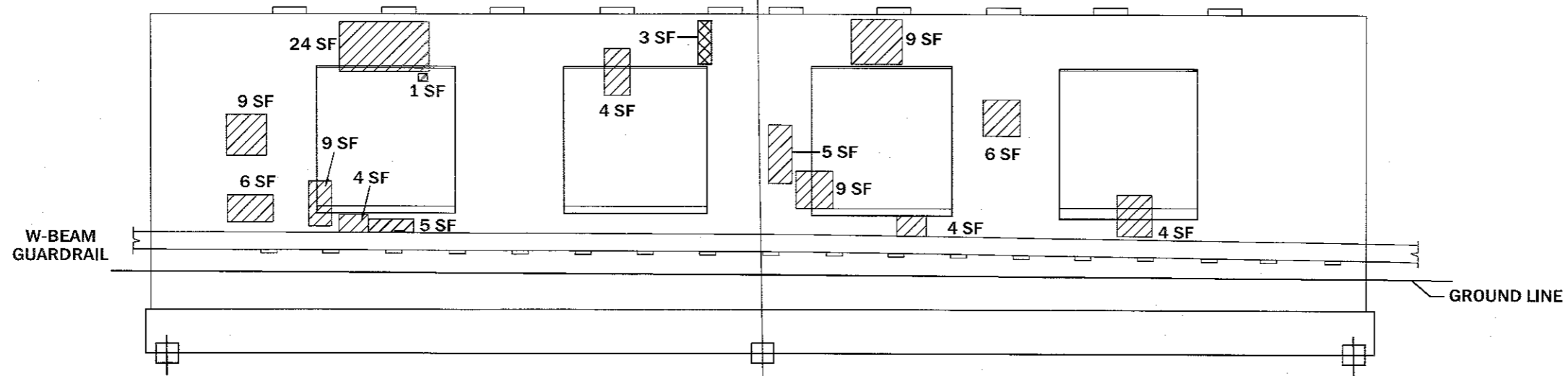
SCALE: SHEET OF SHEETS STA. TO STA.

FOR INFORMATION ONLY

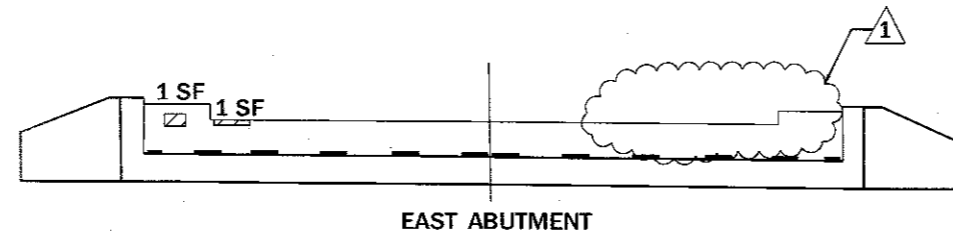


WEST PIER - WEST ELEVATION

-  - STRUCTURAL REPAIR OF CONCRETE ≤ 5"
-  - STRUCTURAL REPAIR OF CONCRETE > 5"



WEST PIER - EAST ELEVATION



EAST PIER REPAIRS BILL OF MATERIAL

ITEM	UNIT	QUANTITY
STRUCTURAL REPAIR OF CONCRETE ≤ 5 INCHES	SQ FT	161
STRUCTURAL REPAIR OF CONCRETE > 5 INCHES	SQ FT	13

1 -REVISED 10-26-2017

MODEL: D:\dwg\... FILE NAME: ... PROJECT: ...

USER NAME = saintvitch	DESIGNED -	REVISED -
PLOT SCALE = 100,0000' / in.	DRAWN -	REVISED -
PLOT DATE = 10/16/2017	CHECKED -	REVISED -
	DATE -	REVISED -

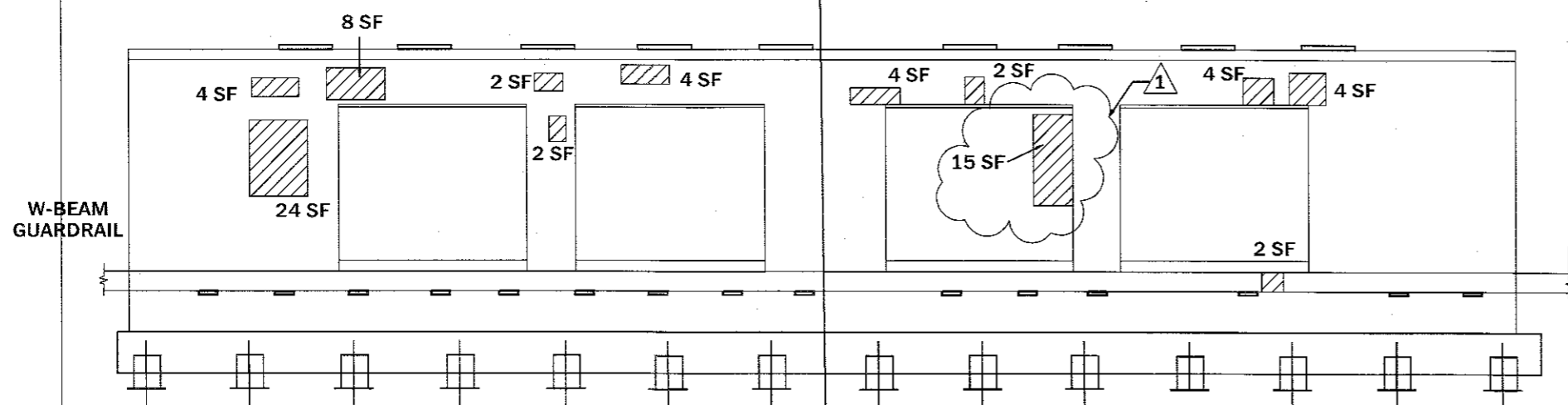
STATE OF ILLINOIS
DEPARTMENT OF TRANSPORTATION

I-94 EDENS EXPWY AT GLENVIEW ROAD (SN 016-0821)
WEST PIER REPAIRS

F.A.I. RTE.	SECTION	COUNTY	TOTAL SHEETS	SHEET NO.
94	2017-0191	COOK	16	7
CONTRACT NO. 62F38				
ILLINOIS FED. AID PROJECT				

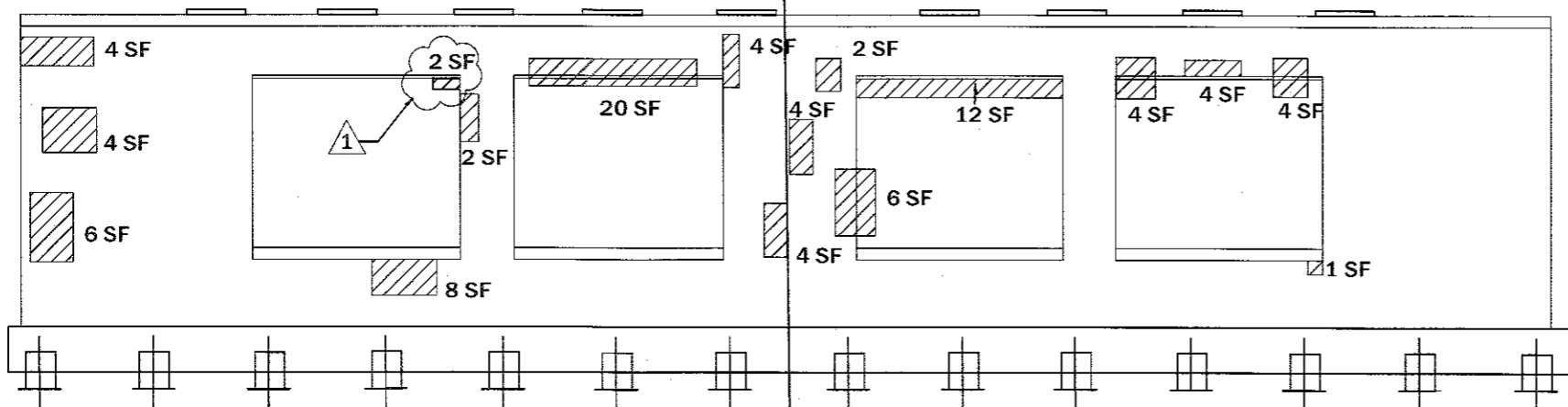
SCALE: SHEET OF SHEETS STA. TO STA.

FOR INFORMATION ONLY

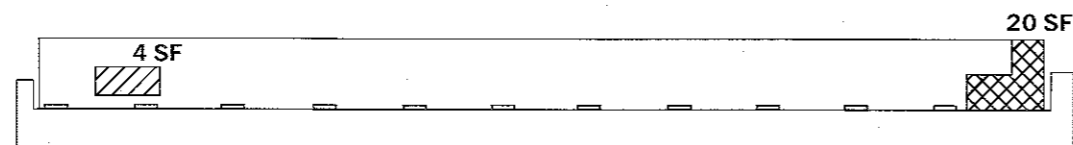


WEST PIER - WEST ELEVATION

- STRUCTURAL REPAIR OF CONCRETE ≤ 5"
- STRUCTURAL REPAIR OF CONCRETE > 5"



WEST PIER - EAST ELEVATION



WEST ABUTMENT

REACTIONS SN 016 - 0826

INTERIOR GIRDER REACTION TABLE					
	W. ABUTMENT	PIER 1	PIER 2	PIER 3	E. ABUTMENT
R DL (k)	20.3	66.9	66.1	66.9	20.3
R LL (k)	31.0	39.3	40.1	39.3	31.0
R IMP (k)	8.7	10.6	10.5	10.6	8.7
R (total) (k)	60.0	116.8	116.7	116.8	60.0

TOTAL BILL OF MATERIAL

ITEM	UNIT	QUANTITY
STRUCTURAL REPAIR OF CONCRETE ≤ 5 INCHES	SQ FT	925
STRUCTURAL REPAIR OF CONCRETE > 5 INCHES	SQ FT	20
TEMPORARY SHORING	EACH	2

WEST PIER REPAIRS BILL OF MATERIAL (sn 016-0826)

ITEM	UNIT	QUANTITY
STRUCTURAL REPAIR OF CONCRETE ≤ 5 INCHES	SQ FT	170
STRUCTURAL REPAIR OF CONCRETE > 5 INCHES	SQ FT	20

1 -REVISED 10-26-2017

K:\SELL\Desktop\110044\BID\NTEC\Illinois\sp\PW\DOT\Documents\DOT - Office\Dist\1. Project\10128817\CD\04\Drawings\10128817-110044.dwg

USER NAME = saimvlch	DESIGNED -	REVISED -
PLOT SCALE = 100.0000' / in.	DRAWN -	REVISED -
PLOT DATE = 10/16/2017	CHECKED -	REVISED -
	DATE -	REVISED -

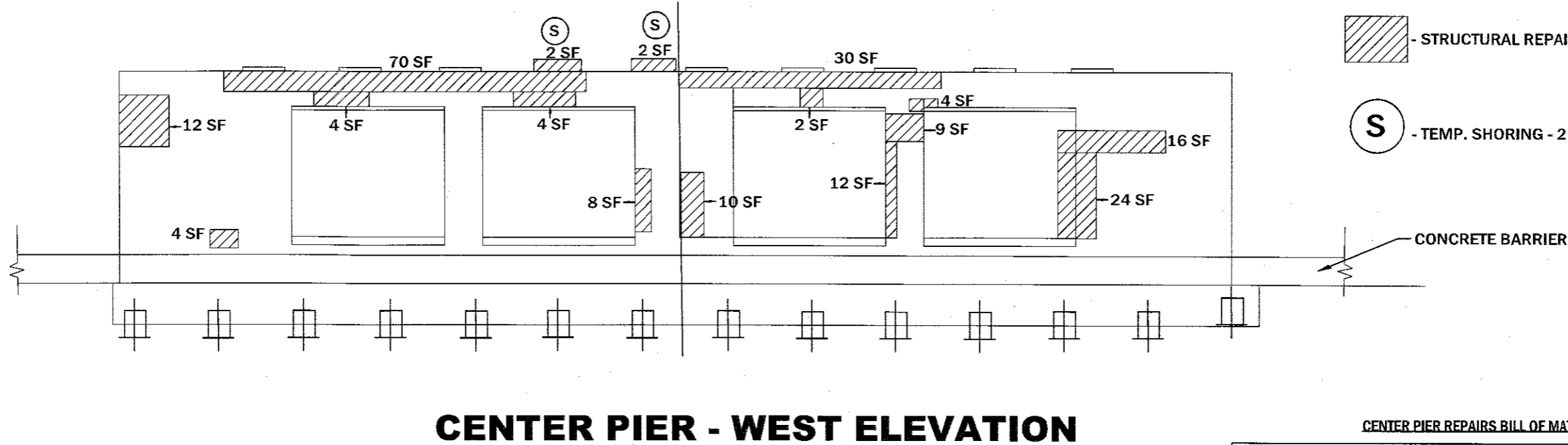
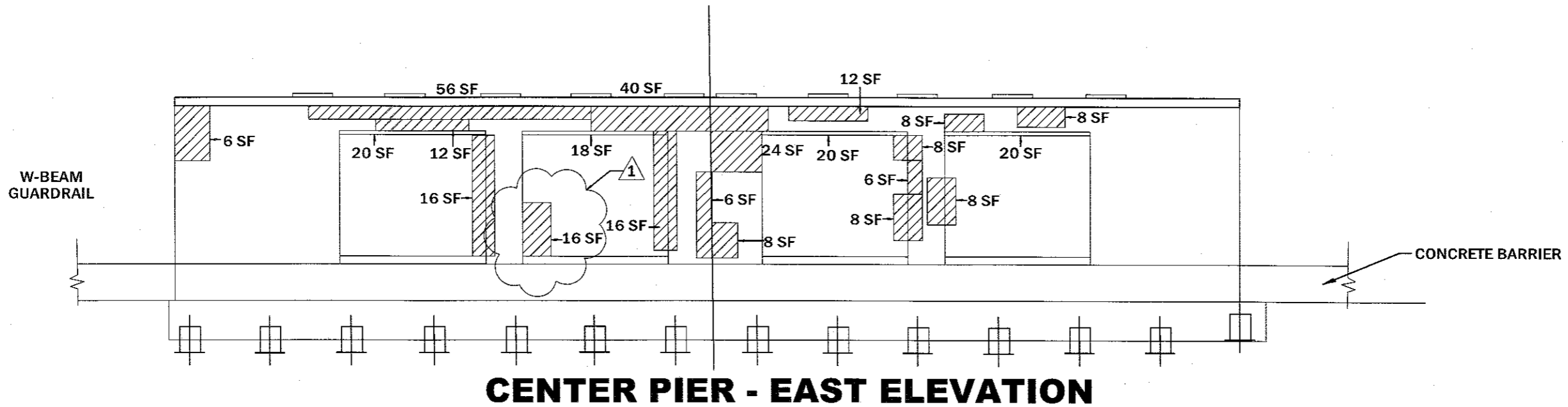
**STATE OF ILLINOIS
DEPARTMENT OF TRANSPORTATION**

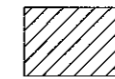

**I-94 EDENS EXPWY AT LINCOLN AVE. (SN 016-0826)
WEST PIER REPAIRS**

F.A.J. RTE.	SECTION	COUNTY	TOTAL SHEETS	SHEET NO.
94	2017-019J	COOK	16	9
CONTRACT NO. 62F38				
ILLINOIS FED. AID PROJECT				

SCALE: SHEET OF SHEETS STA. TO STA.

FOR INFORMATION ONLY



 - STRUCTURAL REPAIR OF CONCRETE \leq 5"
 - TEMP. SHORING - 2 EACH

CENTER PIER REPAIRS BILL OF MATERIAL

ITEM	UNIT	QUANTITY
STRUCTURAL REPAIR OF CONCRETE \leq 5 INCHES	SQ FT	555
STRUCTURAL REPAIR OF CONCRETE $>$ 5 INCHES	SQ FT	
TEMPORARY SHORING	EACH	2

1 -REVISED 10-26-2017

MODEL Default
 FILE NAME: \\s1084\EDENS\ITC\Illinois\proj\PIV\DOT\Documents\DOT - Office\B\B\1 - I-94\EDENS\016-0826\10128817.dwg

USER NAME = saintvitch	DESIGNED -	REVISED -
PLOT SCALE = 1/8" = 1'-0"	DRAWN -	REVISED -
PLOT DATE = 10/16/2017	CHECKED -	REVISED -
	DATE -	REVISED -

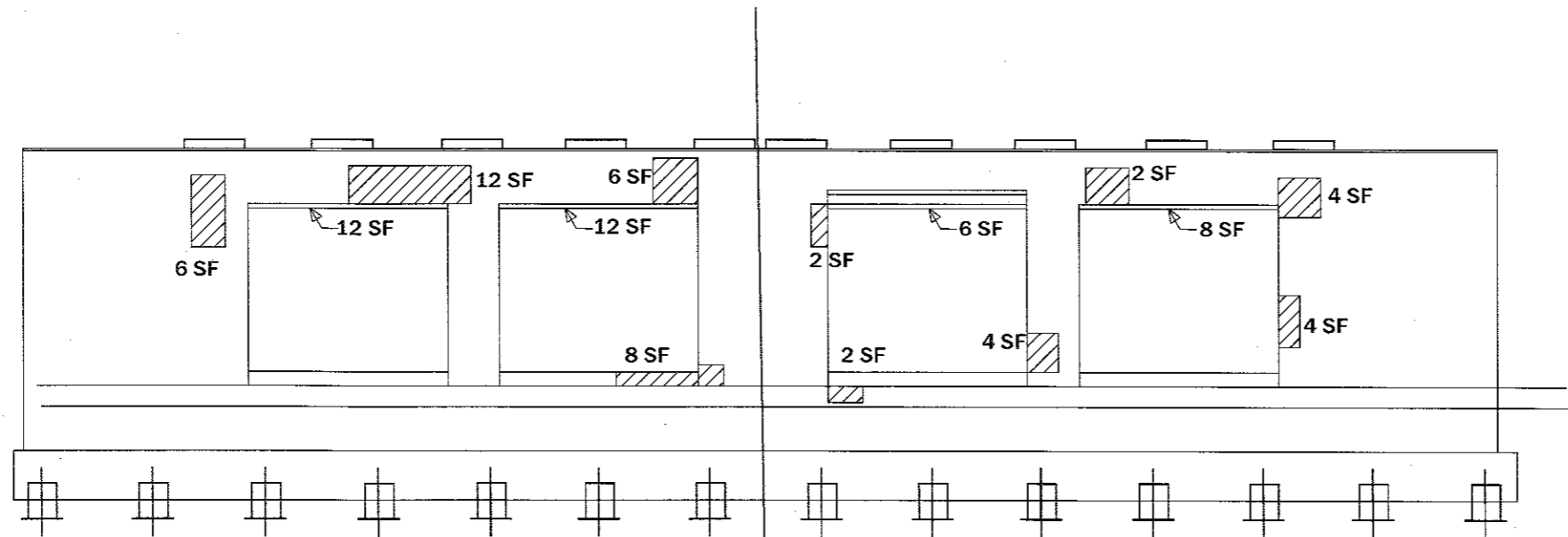
STATE OF ILLINOIS
DEPARTMENT OF TRANSPORTATION

I-94 EDENS EXPWY AT LINCOLN AVE. (SN 016-0826)
CENTER PIER REPAIRS

F.A.I. RTE. 94	SECTION 2017-0191	COUNTY COOK	TOTAL SHEETS 16	SHEET NO. 10
CONTRACT NO. 62F38				
ILLINOIS FED. AID PROJECT				

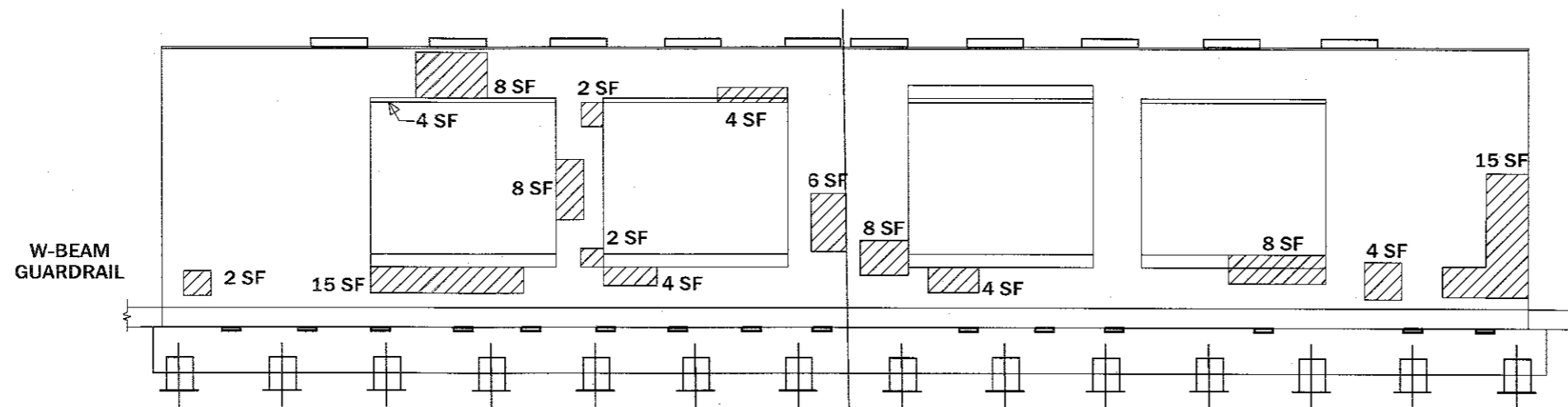
SCALE: SHEET OF SHEETS STA. TO STA.

FOR INFORMATION ONLY

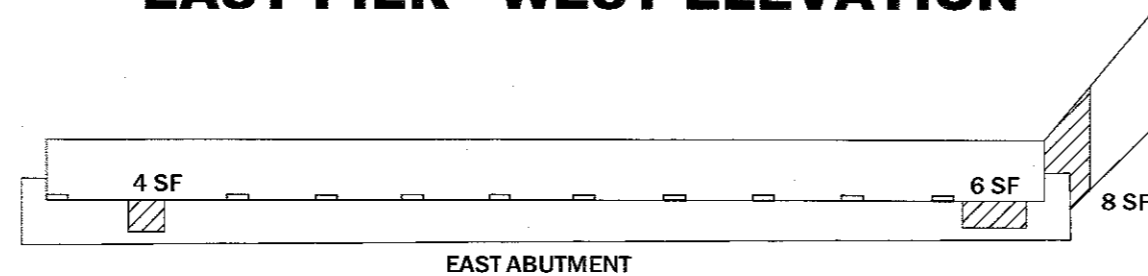


EAST PIER - EAST ELEVATION

- STRUCTURAL REPAIR OF CONCRETE \leq 5"



EAST PIER - WEST ELEVATION



EAST ABUTMENT

EAST PIER REPAIRS BILL OF MATERIAL

ITEM	UNIT	QUANTITY
STRUCTURAL REPAIR OF CONCRETE \leq 5 INCHES	SQ FT	200
STRUCTURAL REPAIR OF CONCRETE $>$ 5 INCHES	SQ FT	

1 -REVISED 10-26-2017

MODEL: D:\mail...
FILE NAME: ...
PROJECT: ...

USER NAME = saintvlch	DESIGNED -	REVISED -
PLOT SCALE = 100.0000' / in.	DRAWN -	REVISED -
PLOT DATE = 10-16-2017	CHECKED -	REVISED -
	DATE -	REVISED -

**STATE OF ILLINOIS
DEPARTMENT OF TRANSPORTATION**

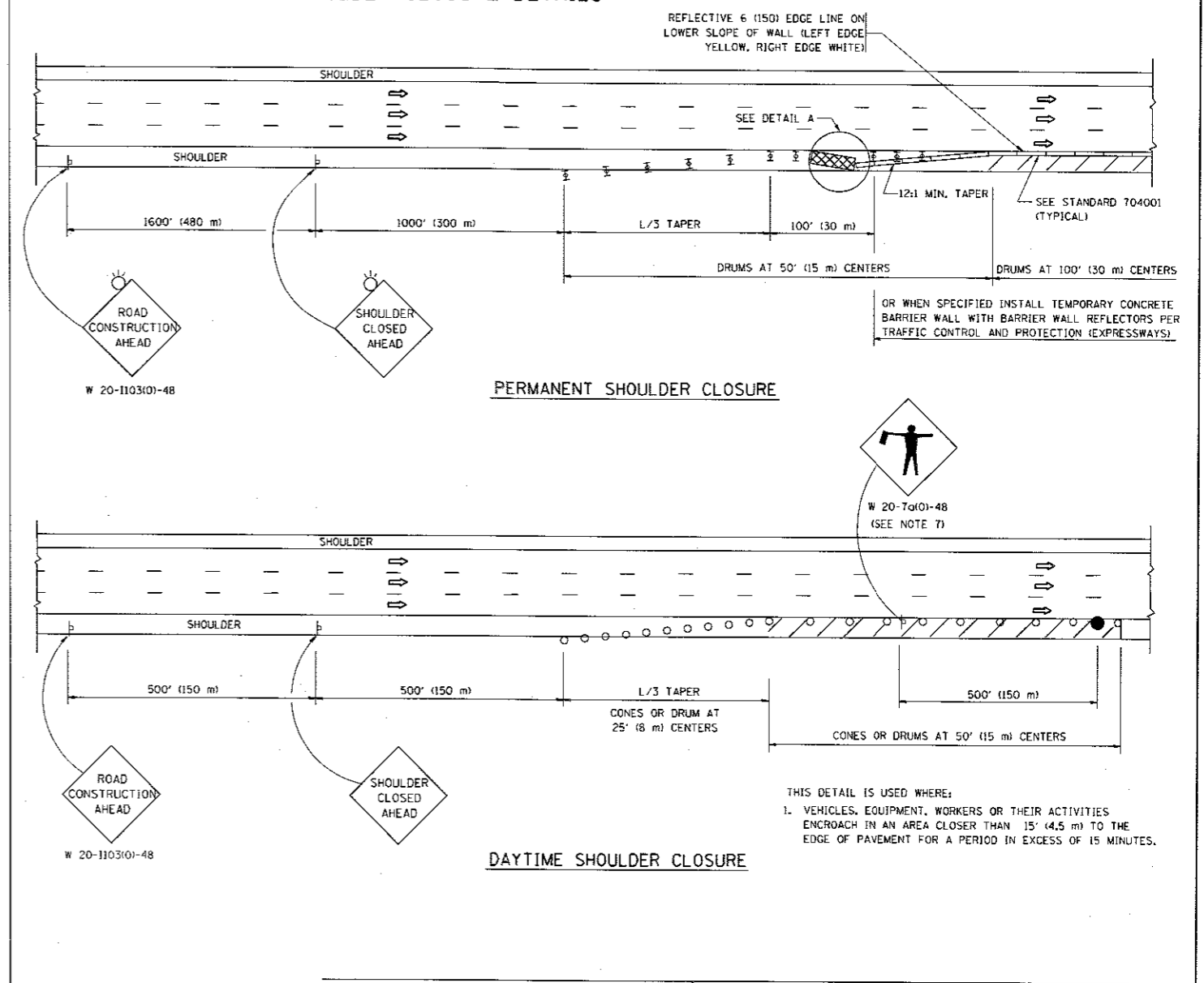
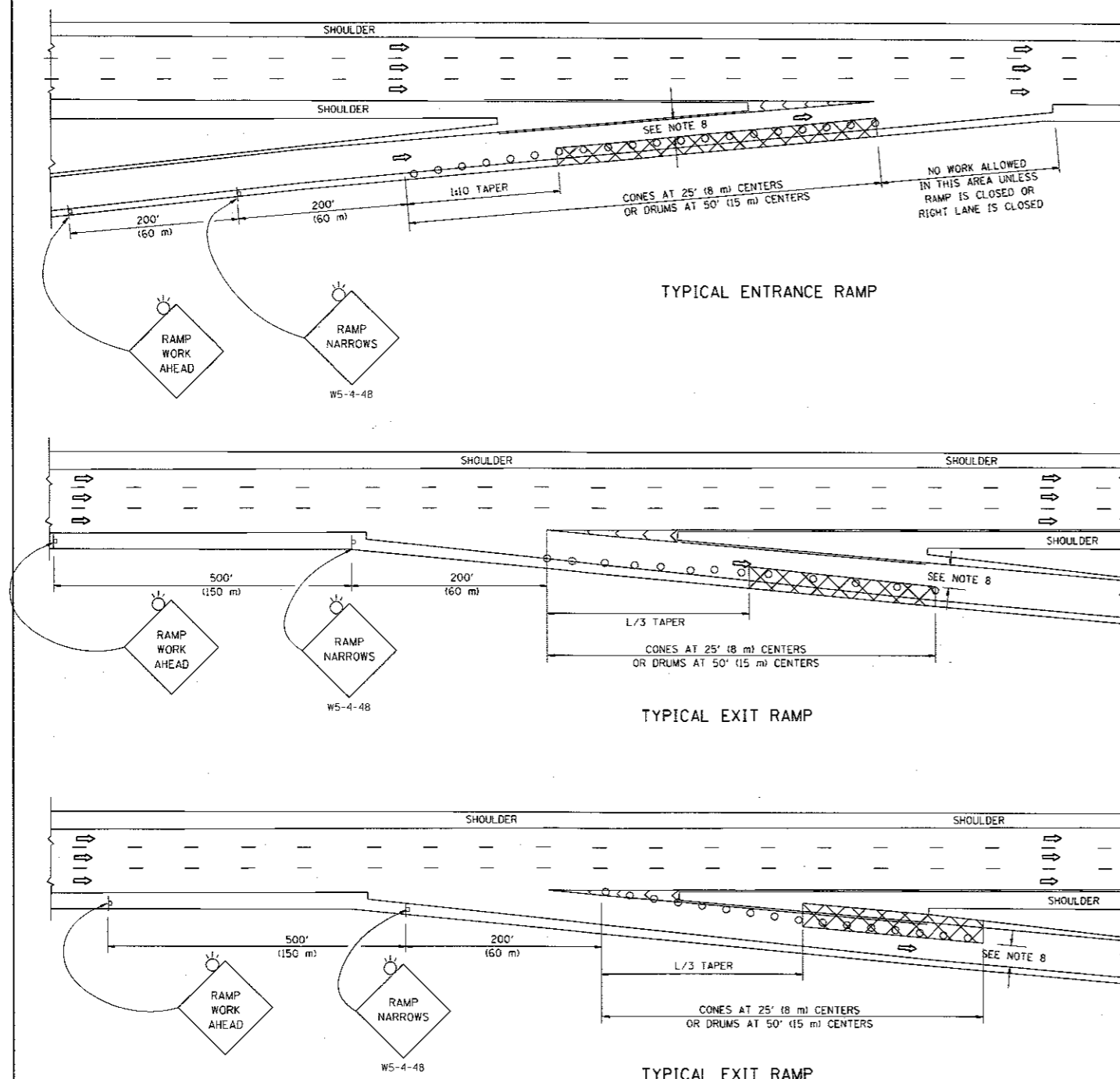
**I-94 EDENS EXPWY AT LINCOLN AVE. (SN 016-0826)
EAST PIER REPAIRS**

F.A.I. RTE. 94	SECTION 2017-0191	COUNTY COOK	TOTAL SHEETS 16	SHEET NO. 11
CONTRACT NO. 62F38				
ILLINOIS FED. AID PROJECT				

SCALE: SHEET OF SHEETS STA. TO STA.

PARTIAL RAMP CLOSURE DETAILS

SHOULDER CLOSURE DETAILS



SYMBOLS

- ACTIVE WORK AREA
- SIGN ON PORTABLE OR PERMANENT SUPPORT
- FLAGGER WITH CONTROL SIGN
- TYPE II BARRICADE OR DRUM WITH STEADY BURN MONO-DIRECTIONAL LIGHT
- CONE, DRUM OR BARRICADE
- IMPACT ATTENUATOR OF TYPE AND TEST LEVEL SPECIFIED

GENERAL NOTES

1. THE "L" DISTANCE EQUALS:

SPEED LIMIT	FORMULAS
45 mph (60 km/h) OR GREATER	METRIC: $L = 0.65(W)(S)$ ENGLISH: $L = (W)(S)$

W = WIDTH OF OFFSET IN FEET (METERS)
S = NORMAL POSTED SPEED MPH (KM/H)
2. PLASTIC DRUMS WITH HIGH PERFORMANCE REFLECTIVE SHEETING AND STEADY BURNING LIGHTS ARE REQUIRED FOR ALL NIGHTTIME CLOSURES.
3. ALL SIGNS SHALL BE POST MOUNTED IF THE CLOSURE TIME EXCEEDS FOUR DAYS.
4. FLASHING LIGHTS SHALL BE USED DURING THE HOURS OF DARKNESS AND SHALL BE INSTALLED ABOVE THE FIRST TWO SETS OF SIGNS.

5. THE IMPACT ATTENUATOR, TEMPORARY IS NOT REQUIRED WHEN THE TEMPORARY CONCRETE BARRIER WALL IS PROTECTED BY OR IS TIED INTO THE EXISTING GUARDRAIL. IF OFFSET IS LESS THAN 5 FEET USE NARROW USE TYPE DEVICE TO MEET NCHRP350/MASH.
6. AUTHORIZATION FROM THE DISTRICT'S BUREAU OF TRAFFIC IS REQUIRED FOR ALL FREEWAY CLOSURES.
7. THE FLAGGER AND FLAGGER SIGN ARE REQUIRED AT THE ABOVE WORK SITES WHEN:
 - a. FOUR OR MORE WORK VEHICLES ENTER THE TRAFFIC LANES IN A ONE HOUR PERIOD.
 - b. THE WORK ACTIVITY REQUIRES FREQUENT ENCROACHMENT INTO THE LANE OPEN TO TRAFFIC.
 THE FLAGGER SHALL BE STATIONED APPROXIMATELY 100' (30 m) TO 200' (60 m) IN ADVANCE OF THE WORKERS.
8. 12' MIN. WIDTH TANGENT SECTION
16' MIN. WIDTH CURVE SECTION.

DETAIL "A"
IMPACT ATTENUATOR, TEMPORARY
(SEE NOTE 5)

1 -REVISED 10-26-2017

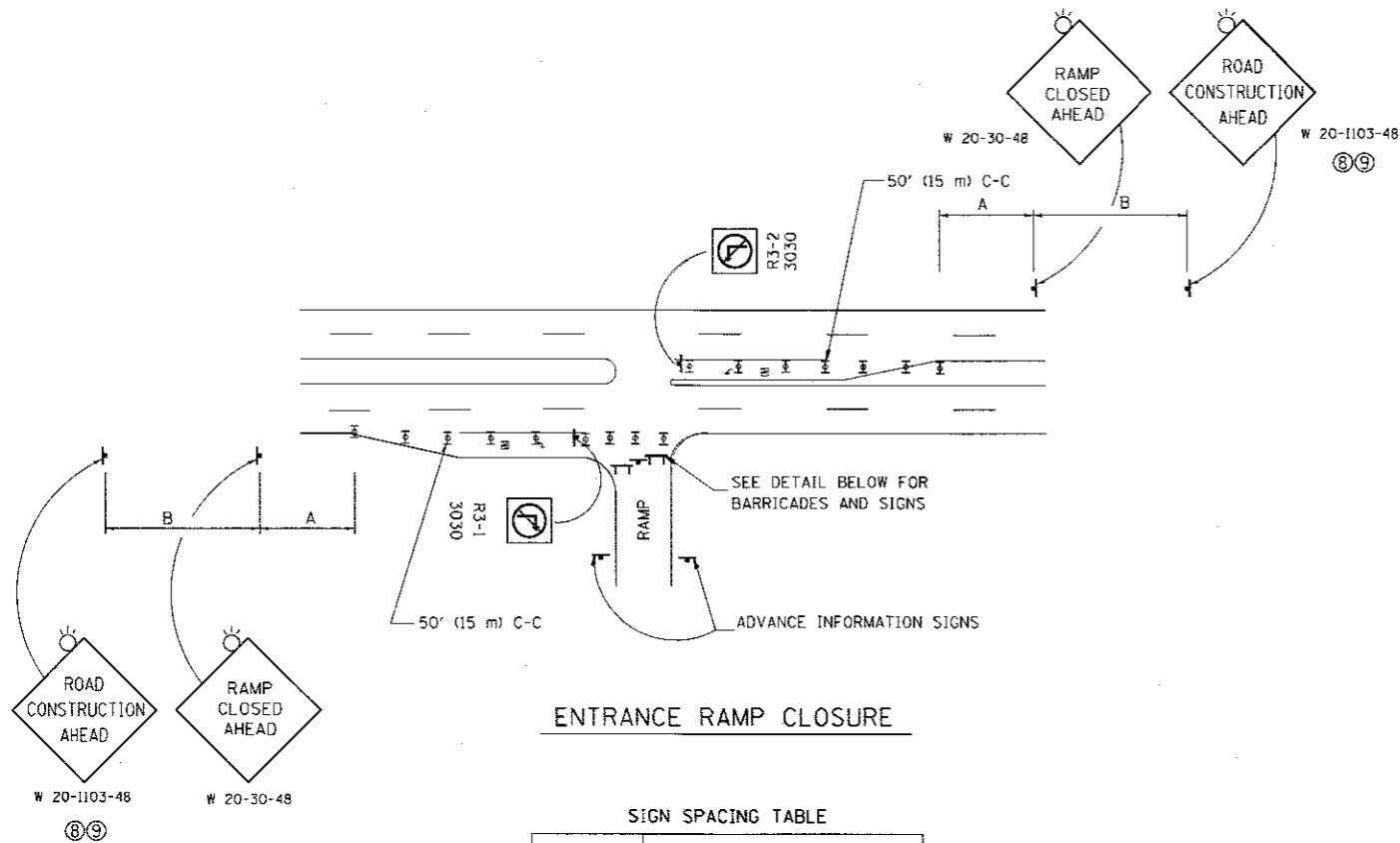
ALL DIMENSIONS ARE IN INCHES (MILLIMETERS) UNLESS OTHERWISE SHOWN.

FILE NAME =	USER NAME = saintvlch	DESIGNED -	REVISED - J.A.F. 12-06
Documents\DOT Offices\District 1\Projects\121288\Drawings\Design\TC-17.dgn	Documents\DOT Offices\District 1\Projects\121288\Drawings\Design\TC-17.dgn	CHECKED -	REVISED - S.P.B. 01-07
PLOT SCALE = 100.0000 // in.	DATE = 11-96	DATE = 11-96	REVISED - S.P.B. 12-09
PLOT DATE = 10/17/2017			REVISED - M.D. 06-13

STATE OF ILLINOIS
DEPARTMENT OF TRANSPORTATION

TRAFFIC CONTROL DETAILS FOR FREEWAY
SHOULDER CLOSURES AND PARTIAL RAMP CLOSURES
SCALE: NONE SHEET NO. 1 OF 1 SHEETS STA. TO STA.

F.A.I. RTE. 94	SECTION 2017-0191	COUNTY COOK	TOTAL SHEETS 16	SHEET NO. 15
TC-17		CONTRACT NO. 62F38		
FED. ROAD DIST. NO. 1 ILLINOIS FED. AID PROJECT				

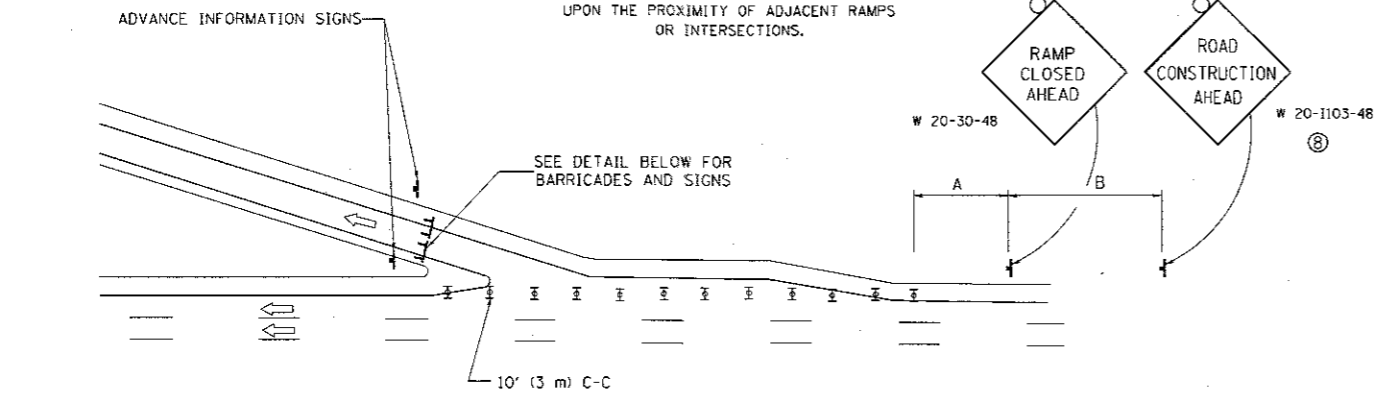


ENTRANCE RAMP CLOSURE

SIGN SPACING TABLE

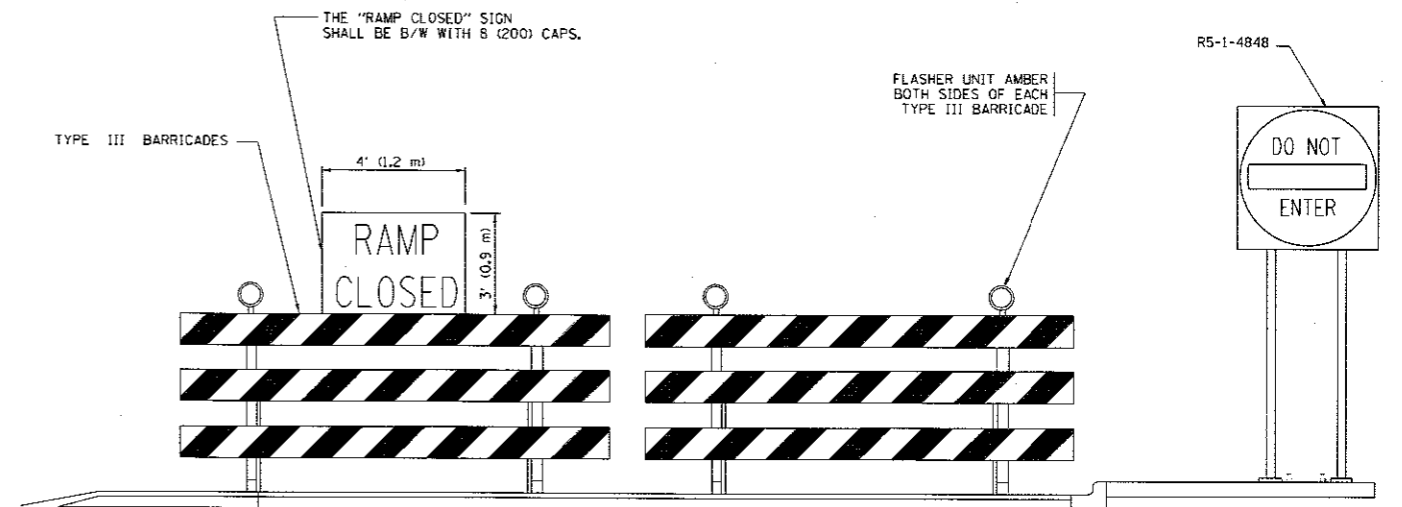
FACILITY	DISTANCE BETWEEN SIGNS	
	A	B
EXPRESSWAY >24 HOURS	1000' (300 m)	1500' (450 m)
EXPRESSWAY <24 HOURS	500' (150 m)	500' (150 m)
ARTERIAL 55 MPH	500' (150 m)	500' (150 m)
ARTERIAL 50-45 MPH	350' (100 m)	350' (100 m)
ARTERIAL <45 MPH	200' (60 m)	200' (60 m)

DISTANCES MAY BE SHORTENED DEPENDING UPON THE PROXIMITY OF ADJACENT RAMPS OR INTERSECTIONS.



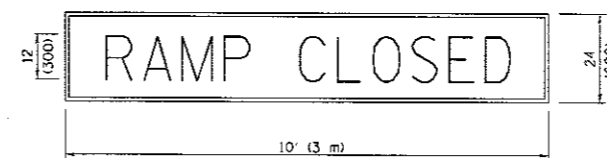
EXIT RAMP CLOSURE

- SYMBOLS**
- ⊞ TYPE II BARRICADE OR DRUM WITH STEADY BURN MONO-DIRECTIONAL LIGHT
 - ⊞ TYPE III BARRICADE WITH 2 FLASHING LIGHTS



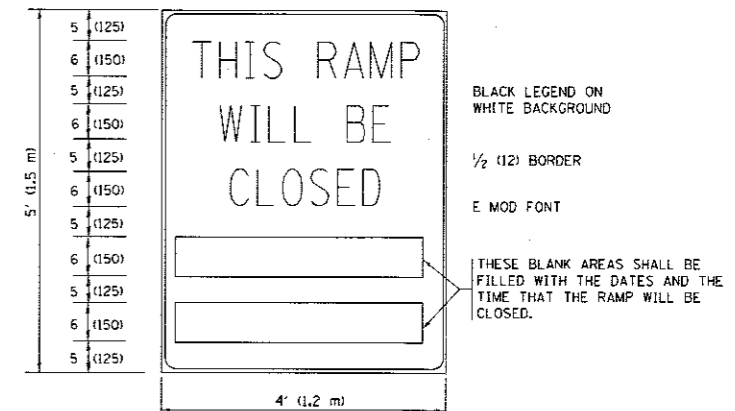
DETAIL FOR REQUIRED BARRICADES & SIGNS

RAMP CLOSURE ADVANCE WARNING SIGN



BLACK LEGEND ON ORANGE BACKGROUND MOUNTED DIAGONALLY
E MOD FONT
1 (25) BORDER
THESE SIGNS ARE REQUIRED ON ALL THE EXIT GUIDE SIGNS FOR EXIT RAMPS THAT WILL BE CLOSED FOR MORE THAN FOUR (4) CONSECUTIVE DAYS.

RAMP CLOSURE ADVANCE INFORMATION SIGN



THESE SIGNS ARE REQUIRED ON BOTH SIDES OF THE RAMP, MINIMUM OF 1 WEEK IN ADVANCE OF THE CLOSURE.
THESE SIGNS SHALL BE FABRICATED AND PAID FOR ACCORDING TO THE TEMPORARY INFORMATION SIGNING SPECIAL PROVISION

GENERAL NOTES:

- ① CONES MAY BE SUBSTITUTED FOR DRUMS OR TYPE II BARRICADES DURING DAY OPERATIONS. CONES SHALL BE A MINIMUM OF 28 (700) HIGH.
- ② STEADY BURN LIGHTS WILL NOT BE REQUIRED FOR DAY OPERATIONS.
- ③ A FLAGGER SHALL BE POSITIONED AT EACH CLOSED RAMP THAT IS OPEN TO CONSTRUCTION VEHICLES, PRECEDED BY A W20-7 FLAGGER WARNING SIGN.
- ④ ALL ROUTE MARKERS AND TRAILBLAZER ASSEMBLIES WHICH DIRECT MOTORISTS TO A CLOSED ENTRANCE RAMP SHALL BE COVERED WHEN THE RAMP IS CLOSED FOR MORE THAN FOUR (4) DAYS.
- ⑤ THE SIGNING AND BARRICADING WHICH IS REQUIRED BY THIS DETAIL SHALL BE INCLUDED IN THE COST OF TRAFFIC CONTROL AND PROTECTION (EXPRESSWAYS).
- ⑥ AUTHORIZATION FROM THE DISTRICT'S BUREAU OF TRAFFIC IS REQUIRED FOR ALL RAMP CLOSURES.
- ⑦ THE RAMP CLOSURE ADVANCE INFORMATION SIGNS SHALL BE ERECTED IF THE CLOSURE TIME EXCEEDS TWENTY-FOUR (24) HOURS. ADDITIONAL ADVANCE WARNING SIGNS ON EXIT GUIDE SIGNING WILL BE REQUIRED FOR EXIT RAMP CLOSURES THAT EXCEED FOUR (4) DAYS IN LENGTH
- ⑧ ROAD CONSTRUCTION AHEAD SIGNS MAY BE OMITTED WHEN THIS DETAIL IS USED IN CONJUNCTION WITH OTHER TRAFFIC CONTROL THAT ALREADY INCLUDES A ROAD CONSTRUCTION AHEAD SIGN.
- ⑨ ARTERIAL ROAD CONSTRUCTION AHEAD SIGNS SHALL BE INSTALLED ON THE LEFT SIDE OF TRAFFIC IF THE MEDIAN IS MORE THAN 10 FT WIDE.

ALL DIMENSIONS ARE IN INCHES (MILLIMETERS) UNLESS OTHERWISE SHOWN.

FILE NAME =	USER NAME = seintvich	DESIGNED - DWS	REVISED - JAF 02-06	STATE OF ILLINOIS DEPARTMENT OF TRANSPORTATION	ENTRANCE AND EXIT RAMP CLOSURE DETAILS	F.A.I. RTE.	SECTION	COUNTY	TOTAL SHEETS	SHEET NO.	
path\11084EBIDINTEG\Illinois.gov\PIWIDOT\Documents\IDOT Offices\District 1\Projects\DI28\B...Data\Design\SheetStd.dgn	DATE = 02-83	REVISED - SPB 01-07	CHECKED -			REVISED - SPB 12-09	94	2017-019-1	COOK	16	16
PLOT SCALE = 1/8" = 1'-0"	DATE = 02-83	REVISED - MD 06-13					TC-08 CONTRACT NO. 62F38				
PLOT DATE = 9/11/2017							FED. ROAD DIST. NO. 1 (ILLINOIS) FED. AID PROJECT				

REVISOR'S MARK: **REVISOR'S MARK** REVISED SHEET 10-26-2017