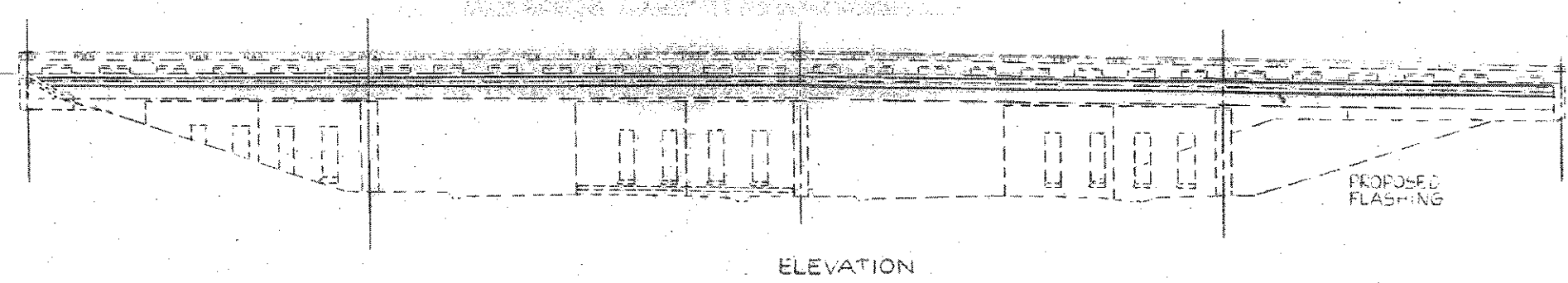
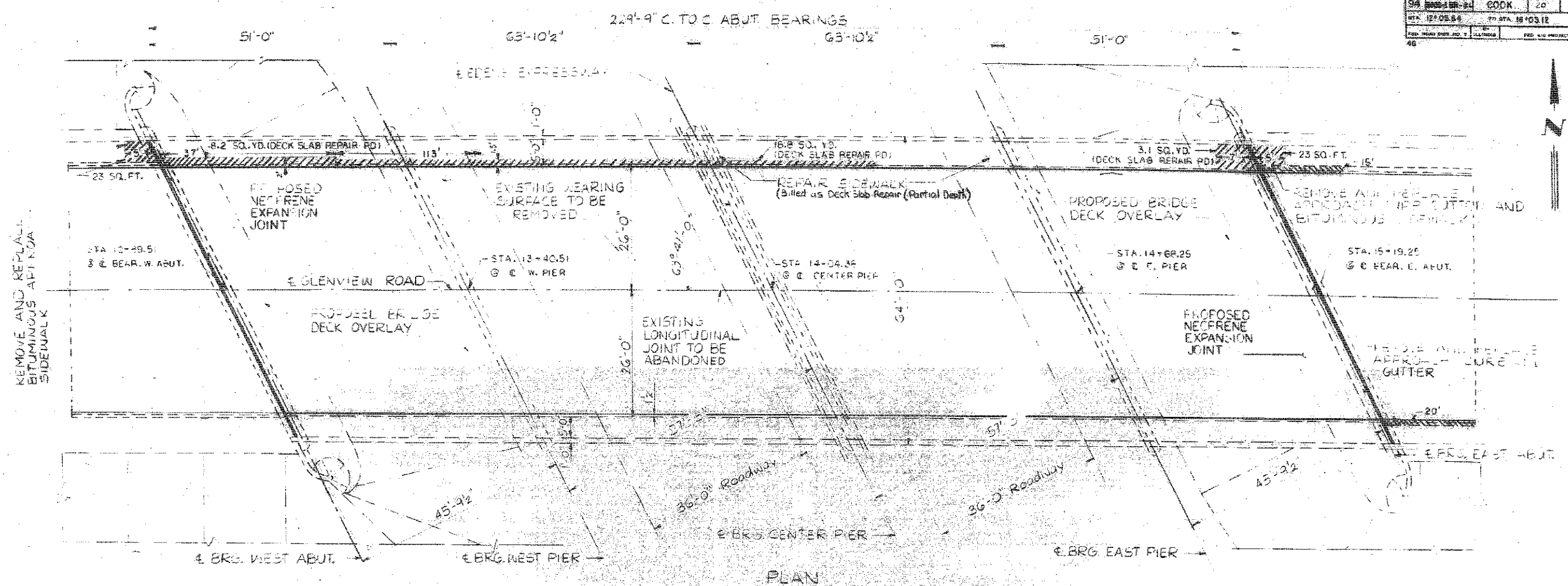


F.A.I. NO.	SECTION	COUNTY	TOTAL SHEETS	SHEET NO.
94	2017-0191	COOK	16	4
STA. 12+05.86	TO STA. 16+03.12			
FED. ROAD DIST. NO. 1		ILLINOIS	FED. AID PROJECT	
46				



FOR TOTAL BILL OF MATERIALS
SEE SH. 36

ILLINOIS DIVISION OF HIGHWAYS
**GLENVIEW ROAD OVER
EDENS EXPRESSWAY**
GENERAL PLAN

SCALE: VERT. 1/8" = 1'-0"
HORIZ. 1/4" = 1'-0"
DATE: 4/78

DRAWN BY: S.M.
CHECKED BY: B.H.



David Carl Puzey 9/25/17
Expires 11/30/18

USER NAME = saintvlch	DESIGNED - JAM	REVISED -
PLOT SCALE = 100.0000" / in.	DRAWN -	REVISED -
PLOT DATE = 8/9/2017	CHECKED - VHV	REVISED -
	DATE -	REVISED -

STATE OF ILLINOIS
DEPARTMENT OF TRANSPORTATION

I-94 EDENS EXPWY AT GLENVIEW ROAD (SN 016-0821)
PLAN AND PROFILE

F.A.I. RTE.	SECTION	COUNTY	TOTAL SHEETS	SHEET NO.
94	2017-0191	COOK	16	4
SCALE: SHEET OF SHEETS STA. TO STA.			CONTRACT NO. 62F38	
ILLINOIS FED. AID PROJECT				

MODEL: Default
FILE NAME: c:\p1046\BID\INTES\illinois.gov\FM\DOT\Documents\DOT Offices\District 3\Projects\0128817\CA\CA\plan.dwg