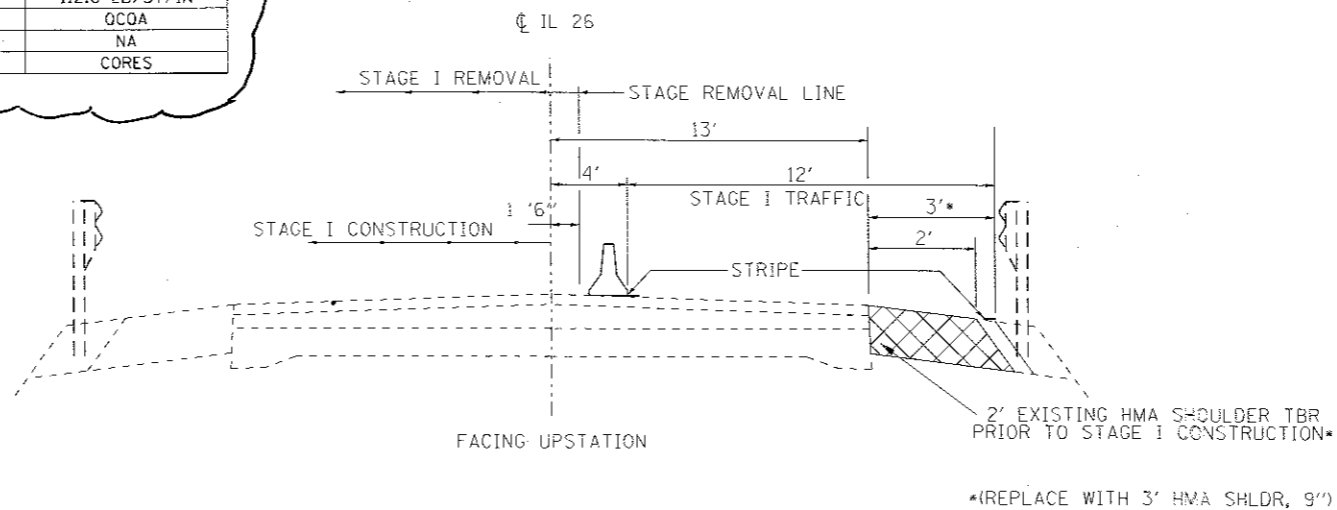
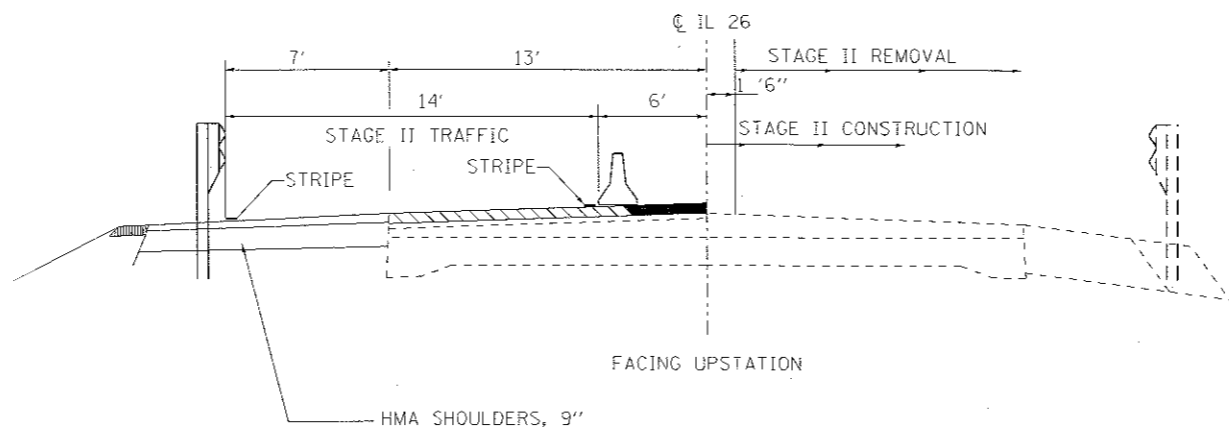


HMA MIXTURE REQUIREMENT TABLE			
LOCATION(S):	ENTIRE PROJECT	ENTIRE PROJECT	ENTIRE PROJECT
MIXTURE USE(S):	HMA BINDER	HMA SURFACE	HMA SHOULDER BOTTOM LIFT(S)
BINDER GRADE (PG):	PG 64-22	PG 64-22	PG 64-22
DESIGN AIR VOIDS:	4.0% @ N50	4.0% @ N50	4.0% @ N50
MIXTURE COMPOSITION:	IL 19.0	IL 9.5	IL 19.0
(MIXTURE GRADATION)			
FRICTION AGGREGATE:	NA	MIXTURE C	NA
MIXTURE WEIGHT:	112.0 LB/SY/IN	112.0 LB/SY/IN	112.0 LB/SY/IN
QUALITY MANAGEMENT PROGRAM:	OCQA	OCQA	OCQA
SUBLOT SIZE:	NA	NA	NA
DENSITY TEST METHOD:	CORES	CORES	CORES



STAGE I TYPICAL SECTION



STAGE II TYPICAL SECTION

FILE NAME =	USER NAME = bbrbajac	DESIGNED -	REVISED -
c:\pwork\pwork\brbajac\10140476\1036419-shr-stage construction.dgn		DRAWN -	REVISED -
		CHECKED -	REVISED -
		DATE -	REVISED -

STATE OF ILLINOIS
DEPARTMENT OF TRANSPORTATION

STAGE CONSTRUCTION TYPICAL SECTIONS

SCALE: SHEET NO. OF SHEETS STA. TO STA.

F.A.P. RTE.	SECTION	COUNTY	TOTAL SHEETS	SHEET NO.
316	1116 BRJ BR	BUREAU	91	21
CONTRACT NO. 66A19				
FED. ROAD DIST. NO. ILLINOIS FED. AID PROJECT				

A10-26-17