

GENERAL NOTES

- ALL ELEVATIONS SHOWN ON THE PLANS ARE BASED ON THE NAVD88 DATUM. HORIZONTAL IS BASED ON NAD83 ILLINOIS STATE PLANE COORDINATE SYSTEM, WEST ZONE.
- ANY REFERENCE TO A STANDARD IN THESE PLANS SHALL BE INTERPRETED TO MEAN THE EDITION AS INDICATED BY THE SUBNUMBER SHOWN IN THE LIST OF STANDARDS OR THE COPY INCLUDED IN THESE PLANS.
- THE LOCATION OF DRAINAGE STRUCTURES, STORM SEWERS, WATER MAINS, SANITARY SEWERS, AND OTHER PUBLIC OR PRIVATE UTILITIES AS SHOWN ON THE PLANS IS APPROXIMATE AND THEIR EXACT LOCATION IS TO BE VERIFIED IN THE FIELD BY THE CONTRACTOR. THIS WORK SHALL BE PERFORMED AT NO ADDITIONAL COST TO THE CONTRACT.
- THE CONTRACTOR SHALL NOTIFY ALL UTILITY COMPANIES OF THE CONSTRUCTION SCHEDULE PRIOR TO BEGINNING CONSTRUCTION. THE CONTRACTOR IS RESPONSIBLE FOR PROTECTING THESE FACILITIES FROM DAMAGE DURING CONSTRUCTION OF THE IMPROVEMENTS. THE CONTRACTOR IS RESPONSIBLE FOR COORDINATING WITH UTILITY COMPANIES TO CAUSE THE ADJUSTMENT, RELOCATION, OR REMOVAL OF EXISTING UTILITIES AS NECESSARY TO ALLOW CONSTRUCTION OF THE PROPOSED IMPROVEMENTS IDENTIFIED IN THESE PLANS.
- IF THE CONTRACTOR CAUSES DEBRIS TO ENTER THE EXISTING SANITARY SEWERS OR STORM SEWERS TO REMAIN, THAT ENTIRE SECTION OF SEWER BETWEEN MANHOLES MUST AT ONCE BE THOROUGHLY CLEANED AT NO ADDITIONAL COST TO THE CONTRACT.
- ALL AREAS DISTURBED DURING CONSTRUCTION OPERATIONS AND NOT PART OF THE WORK AS SHOWN HEREIN SHALL BE RESTORED TO ORIGINAL CONDITION TO THE SATISFACTION OF PEORIA COUNTY AT NO ADDITIONAL COMPENSATION TO THE CONTRACTOR. IT IS INCUMBENT UPON THE CONTRACTOR TO SHOW THAT DAMAGED AREAS WERE NOT DISTURBED BY CONSTRUCTION OPERATIONS.
- EXISTING PAVEMENT THICKNESS AND ELEVATIONS SHOWN ARE APPROXIMATE BASED ON PAVEMENT CORES TAKEN AT THE PROJECT SITE. PAVEMENT CORE LOCATIONS ARE IDENTIFIED ON THE REMOVAL PLAN SHEETS CONTAINED HEREIN.
- WHEN CONCRETE REMOVAL IS REQUIRED, IT MUST BE ACCOMPLISHED BY SAWCUT, SLEDGES, AND PNEUMATIC HAND TOOLS. EQUIPMENT AND METHODS USED MUST BE SUCH AS TO PREVENT CRACKING, SHATTERING, OR SPALLING OF CONCRETE THAT IS TO REMAIN.
- ALL HMA PAVEMENT SURFACE COURSES, CONCRETE BASE COURSES, CONCRETE PAVEMENTS, CURBS, GUTTERS, AND SIDEWALKS WHICH ARE TO BE REMOVED MUST BE SAWCUT AT THE LIMITS OF REMOVAL TO AVOID DAMAGE TO ADJACENT PROPERTIES.
- THE CONTRACTOR SHALL MAINTAIN SURFACE DRAINAGE OF THE ROAD THROUGHOUT THE CONSTRUCTION PROCESS.
- THE CONTRACTOR MUST MAINTAIN ACCESS TO ALL COMMERCIAL AND RESIDENTIAL PROPERTIES IMPACTED BY THE CONSTRUCTION OF THESE IMPROVEMENTS AT ALL TIMES. THE CONTRACTOR SHALL BE SOLELY RESPONSIBLE FOR COORDINATING WITH EACH AFFECTED PROPERTY OWNER TO MAKE ARRANGEMENTS FOR ACCESS NEEDS TO THE PROPERTY.
- THE CONTRACTOR SHALL MAINTAIN TWO-WAY TRAFFIC ON FAUBER ROAD THROUGHOUT THE DURATION OF CONSTRUCTION. MAXWELL ROAD SHALL BE CLOSED TO THROUGH TRAFFIC. SEE STAGES OF CONSTRUCTION FOR MAINTENANCE OF TRAFFIC ON IL ROUTE 116.
- CONTRACTOR IS RESPONSIBLE FOR REMOVAL, STORAGE, AND RE-INSTALLATION OF ALL EXISTING SIGNAGE, AND OTHER ITEMS THAT ARE IMPACTED BY THIS CONTRACT AND ARE NOT SHOWN AS BEING REPLACED. THE CONTRACTOR IS RESPONSIBLE FOR REPLACING ANY OF THESE ITEMS THAT ARE DAMAGED AS A RESULT OF THIS CONTRACT AT NO ADDITIONAL COST. THE REMOVAL AND RE-INSTALLATION OF THESE ITEMS SHALL BE PERFORMED AT NO ADDITIONAL COST TO THE CONTRACT.
- EXISTING TRAFFIC CONTROL SIGNS AND DEVICES THAT ARE IN CONFLICT WITH CONSTRUCTION TRAFFIC CONTROL SIGNS AND DEVICES SHALL BE REMOVED OR COVERED BY THE CONTRACTOR ONCE THE CONSTRUCTION TRAFFIC CONTROL SYSTEM IS IN PLACE. ANY SIGNS OR DEVICES LEFT IN PLACE ARE TO BE PROTECTED FROM DAMAGE DURING CONSTRUCTION. ANY DAMAGED SIGNS OR DEVICES SHALL BE REPAIRED OR REPLACED BY THE CONTRACTOR.
- CARE MUST BE TAKEN FOR ANY EARTH EXCAVATION NEAR EXISTING TREES SO THAT DAMAGE TO THE TREE ROOTS DOES NOT OCCUR.
- THE CONTRACTOR SHALL BE RESPONSIBLE FOR COORDINATION WITH THE ENGINEER AND LOCAL POST MASTER ON AN ACCEPTABLE METHOD FOR MAIL SERVICE DURING CONSTRUCTION. TEMPORARY MAILBOX FACILITIES MAY BE REQUIRED TO BE FURNISHED BY THE CONTRACTOR. ALL EXISTING MAILBOXES SHALL BE REMOVED AND RELOCATED BY THE CONTRACTOR. THE COST OF THIS WORK WILL NOT BE PAID FOR SEPARATELY, BUT SHALL BE INCLUDED IN THE UNIT BID PRICES OF THE CONTRACT.

- THE CONTRACTOR MUST CONTACT J.U.L.I.E. AT LEAST 48 HOURS BEFORE EXCAVATING ANY MATERIAL OR BORING OPERATIONS. THE FOLLOWING UTILITY COMPANIES HAVE BEEN CONTACTED AND THEIR EXISTING FACILITIES ARE SHOWN ON THESE PLANS BASED ON RECORD DRAWINGS AND FIELD SURVEYS.

AMEREN ILLINOIS - ELECTRIC; CARINA KAPRAUN (309-418-7102)
 AMEREN ILLINOIS - GAS; JUSTIN WATKINS (517-204-0000)
 IL AMERICAN WATER; TRIP BARTON (309-566-4148)
 AT&T; BILL CONOVER (309-686-3317)
 GREATER PEORIA SANITARY DISTRICT; MARIA ZAVALA (309-272-4844)
 COMCAST; MARTHA GIERAS OR MARK WABEL (224-229-5862)
 ITV-3; LUKAS DYE (309-670-0400)
 MO NETWORK ALLIANCE - DBA BLUEBIRD; JAMIE SCOTT (314-220-8996)



DISTRICT FOUR GENERAL NOTES

THE PEORIA COUNTY HIGHWAY DEPARTMENT SHOULD BE CONTACTED AND PRIOR APPROVAL OBTAINED FOR ANY TREE REMOVAL BEYOND THE LIMITS/LOCATIONS INCLUDED IN THE PLANS. (201.04)

THE CONTRACTOR SHALL CONSULT WITH THE ENGINEER IN REGARD TO THE EXACT LENGTH OF THE BOX/PIPE CULVERTS, STORM SEWERS, AND/OR PIPE DRAINS REQUIRED PRIOR TO ORDERING THESE ITEMS. (542.00)

PRIOR TO THE USE OF ANY PROPOSED BORROW AREAS, USE AREAS (TEMPORARY ACCESS ROADS, DETOURS, RUN-AROUNDS, ETC.) AND/OR WASTE AREAS, THE CONTRACTOR SHALL FILE THE REQUIRED ENVIRONMENTAL RESOURCE REQUEST SURVEYS ACCORDING TO SECTION 107.22 OF THE STANDARD SPECIFICATIONS. THESE SURVEYS ARE REQUIRED IN ORDER FOR THE DEPARTMENT TO CONDUCT CULTURAL AND BIOLOGICAL RESOURCE SURVEYS FOR THE PROPOSED SITE.

THE REQUIRED ENVIRONMENTAL RESOURCE DOCUMENTATION SHALL INCLUDE THE FOLLOWING:
 * BDE FORM 2289 (CULTURAL AND NATURAL RESOURCES REVIEW OF BURROW AREAS)
 * BDE FORM 2290 (WASTE/USE AREA REVIEW)
 * A LOCATION MAP SHOWING THE SIZE LIMITS AND LOCATION OF THE USE AREA
 * COLOR PHOTOGRAPHS DEPICTING THE USE AREA
 * BORROW AREA ENTRY AGREEMENT FORM - D4 PI0101

- PRIOR TO ANY WASTE MATERIALS BEING REMOVED FROM THE CONSTRUCTION SITE THE REQUIRED ENVIRONMENTAL RESOURCE SURVEYS SHALL BE OBTAINED AND FILED BY THE CONTRACTOR. EXCESS WASTE PRODUCTS REMOVED FROM THE CONSTRUCTION SITE SHALL BE DISPOSED OF AS REQUIRED IN SECTION 202.03 OF THE STANDARD SPECIFICATIONS.
- ANY PROTRUDING METAL BARS SHALL BE REMOVED PRIOR TO THE DISPOSAL OF BROKEN CONCRETE AT APPROVED DISPOSAL SITES.
- PLEASE NOTE THAT A MINIMUM OF FOUR WEEKS SHALL BE ALLOWED FOR THE DISTRICT TO OBTAIN THE REQUIRED WASTE SITE ENVIRONMENTAL CLEARANCES AND SIX WEEKS FOR THE REQUIRED BORROW SITE ENVIRONMENTAL CLEARANCES. (204.00)

COMMITMENTS

COMMITMENTS ARE NOT TO BE ALTERED WITHOUT THE WRITTEN APPROVAL OF ALL PARTIES TO WHICH THE COMMITMENT WAS MADE.

- TREES THREE INCHES OR GREATER IN DIAMETER AT BREAST HEIGHT WILL NOT BE CLEARED FROM APRIL 1 THROUGH SEPTEMBER 30.

2. AN AIRSPACE STUDY WAS SUBMITTED TO FAA FOR REVIEW OF PROJECT PERMANENT STRUCTURES AND CONSTRUCTION PHASE ACTIVITIES. CONTRACTOR SHALL COMPLY WITH THE REQUIREMENTS LISTED HEREIN AS DETERMINED BY THE STUDY.

- THE MAXIMUM HEIGHT OF TEMPORARY CONSTRUCTION MOBILE CRANES SHALL NOT EXCEED 100.0 FT ABOVE GROUND LEVEL, OR 804.0 FT ABOVE MEAN SEA LEVEL.
- THE MAXIMUM HEIGHT OF MOBILE CONSTRUCTION EQUIPMENT SHALL NOT EXCEED 25.0 FT ABOVE GROUND LEVEL, OR 730.0 FT ABOVE MEAN SEA LEVEL.
- CONTRACTOR SHALL NOTIFY THE OWNER'S FIELD REPRESENTATIVE THE SAME DAY THE PROPOSED BRIDGE HAS BEEN CONSTRUCTED TO ITS GREATEST HEIGHT ABOVE GROUND LEVEL AND PROVIDE THE FIELD REPRESENTATIVE WITH THE TOP OF STRUCTURE ELEVATION AS PERMANENTLY INSTALLED.



HIGHWAY STANDARD DETAIL PLANS

000001-08	STANDARD SYMBOLS, ABBREVIATIONS AND PATTERNS
001001-02	AREAS OF REINFORCEMENT BARS
280001-07	TEMPORARY EROSION CONTROL SYSTEMS
420001-10	PAVEMENT JOINTS
420106-07	36' JOINTED PCC PAVEMENT
420111-04	PCC PAVEMENT ROUNDOUTS
420401-13	PAVEMENT CONNECTOR (PCC) FOR BRIDGE APPROACH SLAB
515001-04	NAME PLATE FOR BRIDGES
542301-03	PRECAST REINFORCED CONCRETE FLARED END SECTION
601001-05	PIPE UNDERDRAINS
602601-06	PRECAST REINFORCED CONCRETE FLAT SLAB TOP
602701-02	MANHOLE STEPS
604086-05	FRAME AND GRATE, TYPE 23
606001-08	CONCRETE CURB TYPE B AND COMBINATION CONCRETE CURB AND GUTTER
630001-12	STEEL PLATE BEAM GUARDRAIL
631011-10	TRAFFIC BARRIER TERMINAL, TYPE 2
631031-18	TRAFFIC BARRIER TERMINAL, TYPE 6
701301-04	LANE CLOSURE, 2L, 2W, SHORT TIME OPERATIONS
701502-09	URBAN LANE CLOSURE, 2L, 2W, WITH BIDIRECTIONAL LEFT TURN LANE
701901-08	TRAFFIC CONTROL DEVICES
720001-01	SIGN PANEL MOUNTING DETAILS
720006-04	SIGN PANEL ERECTION DETAILS
728001-01	TELESCOPING STEEL SIGN SUPPORT
780001-05	TYPICAL PAVEMENT MARKINGS
782006-01	GUARDRAIL AND BARRIER WALL REFLECTOR MOUNTING DETAILS
886001-01	DETECTOR LOOP INSTALLATIONS
886006-01	TYPICAL LAYOUT FOR DETECTION LOOPS
BLR 22-7	TYP. APPL. OF T.C.D. FOR RURAL LOC. HWYS. (2-LANE 2 WAY RURAL TRAFF.) (RD. CLOSED TO THRU TRAFF.)
BLR 23-4	TRAFFIC BARRIER TERMINAL TYPE 1

HMA MIXTURE REQUIREMENTS TABLE

THE FOLLOWING HMA MIXTURE REQUIREMENTS ARE APPLICABLE FOR THIS PROJECT:

LOCATIONS:	MAXWELL ROAD	DRIVEWAYS	
MIXTURE USES:	POLY. HMA SURFACE	INCIDENTAL (SURFACE LIFTS)	INCIDENTAL (LOWER LIFTS)
PG:	SBS 70-28	64-22	64-22
DESIGN AIR VOIDS:	4.0% @ N50	4.0% @ N50	4.0% @ N50
MIXTURE COMPOSITION: (MIXTURE GRADATION)	IL-9.5	IL-9.5	IL-19.0
FRICTION AGGREGATE	MIX D	MIX D	N/A
MIXTURE WEIGHT:	112 LB/SQ YD/IN	112 LB/SQ YD/IN	112 LB/SQ YD/IN
QUALITY MANAGEMENT PROGRAM:	QC/QA	QC/QA	QC/QA
SUBLOT SIZE:	N.A.	N.A.	N.A.
MATERIAL TRANSFER DEVICE (REQUIRED?):	NO	NO	NO

BITUMINOUS MATERIALS APPLICATION RATES

SURFACE TYPE	RESIDUAL RATE ON PAVEMENT
AGGREGATE BASE	0.25 LB/SF
MILLED HMA OR PCC	0.08 LB/SF
FOG COAT ON NEW HMA	0.08 LB/SF

MODEL: Maxwell_Gen_Notes_RevA.dwg
 FILE NAME: E:\Projects\20210120\116roadway\Sheets\Maxwell_Gen_Notes.dwg
 License No. 184-000613 Copyright CMT, Inc.

	USER NAME = Isyedsaad	DESIGNED - IHS	REVISED - 10/26/2023
	PLOT SCALE = 0.16666633' / in.	DRAWN - IHS	REVISED -
	PLOT DATE = 10/26/2023	CHECKED - EMM	REVISED -
		DATE - AUG 2023	REVISED -

**STATE OF ILLINOIS
 DEPARTMENT OF TRANSPORTATION**

**GENERAL NOTES, HIGHWAY STANDARDS, AND
 COMMITMENTS
 MAXWELL ROAD BRIDGE REHABILITATION**

SCALE: SHEET 1 OF 1 SHEETS STA. TO STA.

F.A.U RTE.	SECTION	COUNTY	TOTAL SHEETS	SHEET NO.
6577	19-00115-00-BR	PEORIA	99	2
CONTRACT NO. 89815				
ILLINOIS FED. AID PROJECT				

STORM SEWER REMOVAL		STORM SEWER REMOVAL, 12"	STORM SEWER REMOVAL, 15"	STORM SEWER REMOVAL, 24"
		55100500	55100700	55101200
STATION TO STATION	O/S	FOOT	FOOT	FOOT
140+24.45	140+24.30	LT/RT	45	
140+24.30	140+62.71	RT		53
140+66.59	140+62.78	LT/RT		116
TOTAL:		45	53	116

DRAINAGE STRUCTURE REMOVAL SCHEDULE			REMOVING INLETS	REMOVING HEADWALLS
LOCATION			6050060	50104400
STATION	O/S		EACH	EACH
140+24.30	22.3'	RT	1	
140+24.45	22.2'	LT	1	
140+62.78	59.1'	RT		1
151+46.66	49.4'	RT		1
TOTAL:			2	2

STORM SEWER			STORM SEWER CLASS A, TY 2, 12"	STORM SEWER CLASS A, TY 3, 12"	STORM SEWER CLASS A, TY 2, 15"	STORM SEWER CLASS A, TY 3, 15"	STORM SEWER CLASS A, TY 3, 18"	STORM SEWER TY 2, WMQ, 12"	TRENCH BACKFILL
			550A0340	550A0640	550A0360	550A0660	550A0680	Z0056668	20800150
STRUCTURE TO STRUCTURE			FOOT	FOOT	FOOT	FOOT	FOOT	FOOT	CU YD
LOCATION									
S1	S2	RT TO LT	41						2.1
S3	S2	LT	7						0.0
S2	S4	LT	21						1.2
S5	S4	LT	4						0.0
S14	S13	LT	7						0.0
S16	S15	RT	7						0.0
S11	S13	LT	190						13.5
S12	S15	RT	185						0.0
S4	S6	LT		137					7.9
S13	S15	LT TO RT			40				5.1
S15	S17	RT			29				0.5
S7	S6	LT				39			3.9
S6	S8	LT TO RT					38		59.7
S8	S9	RT					28		3.2
S10	S11	LT						42	0.0
TOTAL:			462	137	69	39	66	42	97

NOTE: SEE PIPE CULVERTS TABLE (SHEET 15) FOR ADDITIONAL TRENCH BACKFILL.

PIPE CULVERT REMOVAL			PIPE CULVERT REMOVAL
			50105220
STATION TO STATION	O/S		FOOT
149+05.63	149+77.97	LT	72
152+25.26	152+67.51	LT	44
152+36.03	152+89.91	RT	52
TOTAL:			168

STORM STRUCTURES TO BE ADJUSTED				EXISTING ELEVATION	PROPOSED ELEVATION	DIFF. +/-
STATION	O/S				FOOT	
136+91.82	22.1'	LT	681.57'	682.01'	0.44	
138+12.03	24.1'	RT	684.21'	683.78'	-0.43	
TOTAL:					0.01	

INLET AND PIPE PROTECTION					
28000500					
MAXWELL ROAD			STATION	O/S	EACH
STATION	O/S	EACH	152+35.04	41.3' RT	1
136+91.82	22.1' LT	1	152+90.90	40.3' RT	1
136+92.18	29.3' LT	1	152+24.34	52.2' LT	1
138+12.03	24.1' RT	1	152+69.05	49.5' LT	1
140+23.77	22.6' RT	1	153+34.33	21.6' LT	1
140+25.09	21.8' LT	1	153+34.82	21.6' RT	1
140+64.15	19.2' RT	1	153+76.57	22.6' LT	1
140+67.83	17.8' LT	1	FAUBER ROAD		
140+66.86	57.6' LT	1	87+40.57	16.0' RT	1
149+23.56	62.4' LT	1	87+25.44	42.5' LT	1
149+48.78	62.8' LT	1	87+36.22	25.1' LT	1
151+40.08	20.0' RT	1	87+33.27	45.4' LT	1
151+46.83	20.0' RT	1	87+44.03	25.6' LT	1
151+40.97	19.1' LT	1	TOTAL: 26		
151+46.82	20.0' LT	1			

SANITARY MANHOLES TO BE ADJUSTED				
STATION	O/S	EX. ELEV	PR. ELEV	DIFF
139+33.58	76.6' LT	684.30	684.34	0.04

GAS VALVES TO BE ADJUSTED		
STATION	O/S	EACH
154+44.17	29.7' RT	1
154+75.18	51.5' RT	1

WATER VALVES TO BE ADJUSTED		
STATION	O/S	EACH
87+60.90	32.7' RT	1
137+85.92	54.9' LT	1
154+54.80	50.5' RT	1

THE TABLES PROVIDED ON THESE SHEETS IDENTIFY UTILITIES WHICH APPEAR TO REQUIRE RELOCATION OR ADJUSTMENT BASED ON THE INFORMATION PROVIDED IN THESE DRAWINGS. THE CONTRACTOR AND UTILITY COMPANIES SHALL BE RESPONSIBLE TAKE STEPS NECESSARY TO CHANGE THE EXISTING UTILITIES. ALL UTILITIES SHALL BE ADJUSTED BY THE UTILITY COMPANIES UNLESS OTHERWISE NOTED.

THE CONTRACTOR MUST CONTACT J.U.L.I.E. AT LEAST 48 HOURS BEFORE EXCAVATING ANY MATERIAL OR BORING OPERATIONS. THE FOLLOWING UTILITY COMPANIES HAVE BEEN CONTACTED AND THEIR EXISTING FACILITIES ARE SHOWN ON THESE PLANS BASED ON RECORD DRAWINGS AND FIELD SURVEYS.

AMEREN ILLINOIS; NATHAN HILL (618-301-5327)
 AT&T; HEATHER BENDER (HF3767@ATT.COM)
 I3 BROADBAND; ENGINEERING OFFICE (309-670-0400)
 COMCAST; MARK WABEL (MARK_WABEL@COMCAST.COM)
 GREATER PEORIA SANITARY DISTRICT; ARTHUR ARMSTRONG (309-272-4846)
 IL AMERICAN WATER; TRIP BARTON (309-566-4148)
 BLUEBIRD NETWORK; JAMIE SCOTT (314-220-8996)
 CITY OF PEORIA; ALYSSA BURNETT (309-494-8822)

UTILITY POLES TO BE ADJUSTED				
STATION	O/S	EX. ELEV	PR. ELEV	DIFF
87+53.10	39.0' RT	685.16	685.2	0.04

ABOVE GROUND UTILITIES TO BE ADJUSTED				
STATION	O/S	EX. ELEV	PR. ELEV	OWNER
87+56.03	39.8' RT	684.8	684.8	AMEREN
138+31.95	47.6' LT	684.4	684.2	AMERITECH

MODEL: Schedule - DRAINAGE
 FILE NAME: L:\proj\c021001201-01_Maxwell\BRIDGE\1201011\roadway\Sheets\Maxwell_Schedule.dgn


GUARDRAIL SCHEDULE				GUARDRAIL REMOVAL	STEEL PL BEAM GUARDRAIL - TY A, 6 FT POSTS	TERMINAL MARKER - DIRECT APPLIED	TRAFFIC BARRIER TERM, TY 1 (SPECIAL)	TRAFFIC BARRIER TERM, TY 2	TRAFFIC BARRIER TERM, TY 6
LOCATION				63200310	63000001	72501000	63100167	63100045	63100085
STATION TO STATION		O/S		FOOT	FOOT	EACH	EACH	EACH	EACH
141+41.06	142+32.76	18.7' RT	17.2' RT	91.7					
145+65.54	149+62.28	16.7' RT	23.0' RT	397.1					
146+30.46	149+14.64	17.6' LT	22.6' LT	284.6					
140+35.99	141+92.21	19.8' RT	17.2' RT		156.3				
142+49.26	142+55.51	17.2' LT	17.2' LT		6.3				
146+09.31	147+29.38	17.2' RT	19.0' RT		120.1				
146+72.60	148+35.08	17.8' LT	20.6' LT		162.5				
139+98.66		22.5' RT				1			
142+36.84		18.2' LT				1			
147+41.76		20.4' RT				1			
148+72.45		22.6' LT				1			
139+98.66	140+35.99	22.5' RT	19.8' RT				1		
148+35.08	148+72.45	20.6' RT	22.6' RT				1		
142+36.84	142+49.26	18.2' LT	17.2' LT					1	
147+29.38	147+41.76	19.0' RT	20.4' RT					1	
141+92.21	142+29.72	17.2' RT	17.1' RT						1
142+55.51	142+93.01	17.2' LT	17.2' LT						1
145+71.81	146+09.31	17.5' RT	17.2' RT						1
146+35.10	146+72.60	17.3' LT	17.8' LT						1
TOTAL:				775	450	4	2	2	4

ID NO.	DRAINAGE STRUCTURE	FRAM & GRATE TYPE	FLAT SLAB (YES OR NO)	STATION	OFFSET	RIM ELEV.	STR. INVERT
S1	INLET TYPE G-1 SP	STD 604001-D4	NO	87+40.63	16.0' RT	684.60	680.79
S2	MANHOLE TYPE A, 4' DIA	TY 23	YES	87+36.22	25.0' LT	684.50	681.39
S3	INLET TYPE A	TY 23	NO	87+43.83	26.3' LT	684.52	682.50
S4	INLET TYPE G-1 DOUBLE SP	STD 604001-D4	NO	87+33.34	45.4' LT	684.20	678.55
S5	INLET TYPE G-1 DOUBLE SP	STD 604001-D4	NO	87+41.23	48.9' LT	684.20	682.20
S6	INLET-MANHOLE TY G-1, 5' DIA	STD 604001-D4	YES	140+65.41	18.5' LT	691.43	677.12
S7	MANHOLE TY A, 4' DIA	TY 37	YES	140+66.70	55.6' LT	679.31	677.31
S8	INLET-MANHOLE TY G-1, 5' DIA	STD 604001-D5	YES	140+64.15	19.2' LT	691.33	679.43
S9	PRECAST FES 18"	-	-	140+62.78	59.0' LT	-	679.00
S10	INLET TYPE G-1 SP	STD 604001-D4	NO	153+76.50	22.6' LT	701.62	699.62
S11	INLET TYPE G-1 SP	STD 604001-D4	NO	153+34.75	21.6' LT	701.15	698.15
S12	INLET TYPE G-1 SP	STD 604001-D4	NO	153+34.26	21.6' RT	701.14	699.14
S13	INLET TYPE G-1 DOUBLE SP	STD 604001-D4	NO	151+46.89	20.0' LT	699.59	695.74
S14	INLET TYPE G-1 DOUBLE SP	STD 604001-D4	NO	151+40.14	20.0' LT	699.59	697.59
S15	INLET TYPE G-1 DOUBLE SP	STD 604001-D4	NO	151+46.89	20.0' RT	699.59	694.59
S16	INLET TYPE G-1 DOUBLE SP	STD 604001-D4	NO	151+40.14	20.0' RT	699.59	697.59
S17	PRECAST FES 15"	-	-	151+46.66	49.4' RT	-	698.04
S18	PRECAST FES 24"	-	-	152+36.03	41.3' RT	-	695.98
S19	PRECAST FES 24"	-	-	152+89.91	40.3' RT	-	696.64
S20	PRECAST FES 18"	-	-	152+25.26	52.3' LT	-	695.10
S21	PRECAST FES 18"	-	-	152+68.12	49.6' LT	-	696.13
S22	PRECAST FES 30"	-	-	149+05.63	62.0' LT	-	691.08
S23	PRECAST FES 30"	-	-	149+77.97	63.3' LT	-	691.56

PIPE UNDERDRAIN SCHEDULE			PIPE UNDERDRAINS, TYPE 3
LOCATION			60108501
STATION TO STATION		O/S	FOOT
137+00.00	138+73.20	LT	171.5
138+30.00	142+44.72	RT	417.3
139+14.67	142+44.72	LT	331.1
146+20.10	153+40.00	RT	719.2
146+20.10	153+40.00	LT	722.4
85+30.00	87+92.25	RT	283.2
85+30.00	86+41.51	LT	111.5
86+41.44	87+92.28	LT	158.9
SUB TOTAL:			2915.1
TOTAL:			2915

PIPE CULVERTS				PIPE CULVERTS, CLASS A, TYPE 1, 18"	PIPE CULVERTS, CLASS A, TYPE 1, 24"	PIPE CULVERTS, CLASS A, TYPE 1, 30"	TRENCH BACKFILL
				542A0223	542A0229	542A0235	20800150
STRUCTURE TO STRUCTURE	O/S	O/S	FOOT	FOOT	FOOT	CU YD	
S23	S22	63.3' LT	62.0' LT			72	1.6
S21	S20	52.3' LT	49.6' LT	44			6.0
S19	S18	41.3' RT	40.3' RT		52		0
SUB TOTAL:			44	52	72	7.6	
TOTAL:						8	

MODEL: Schedule - Copy 3 - Copy 1 (Sheet)
 FILE NAME: L:\bids\CD21001202001\Maxwell\Bids\Drawings\Schedules\Maxwell_Schedule.dgn
 License No. 184-000613 Copyright CMT, Inc.

	USER NAME = isyedasad	DESIGNED - ZMS	REVISED - 10/26/2023
	PLOT SCALE = 0.16666633' / in.	DRAWN - ZMS	REVISED -
	PLOT DATE = 10/26/2023	CHECKED - CJW	REVISED -
		DATE - AUG 2023	REVISED -

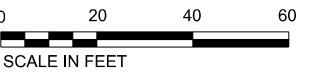
STATE OF ILLINOIS
DEPARTMENT OF TRANSPORTATION

QUANTITY SCHEDULES
MAXWELL ROAD BRIDGE REHABILITATION

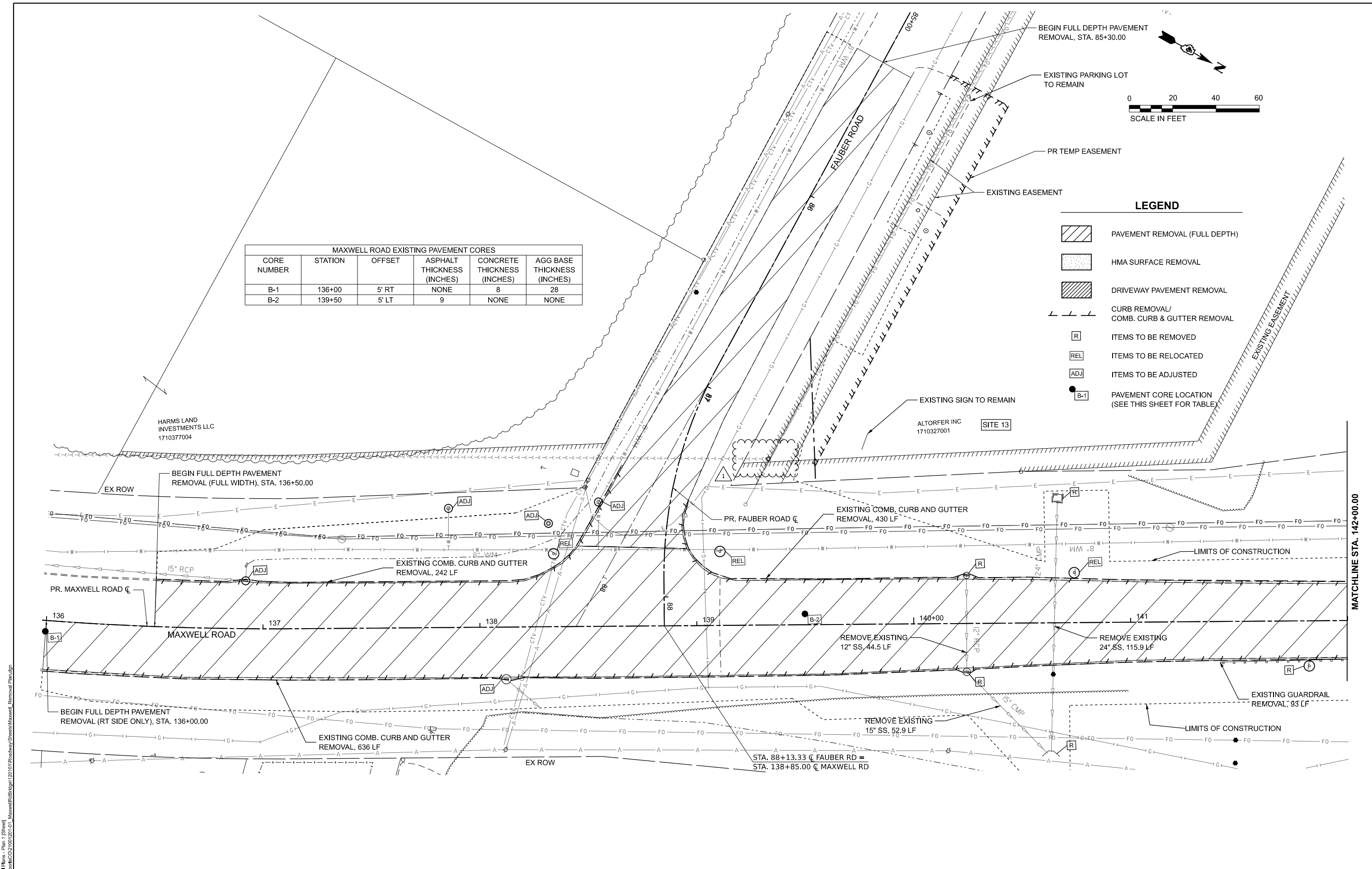
SCALE: SHEET 5 OF 5 SHEETS STA. ___+___ TO STA. ___+___

F.A.U. RTE.	SECTION	COUNTY	TOTAL SHEETS	SHEET NO.
6577	19-00115-00-BR	PEORIA	99	15
CONTRACT NO. 89815				
ILLINOIS FED. AID PROJECT				

MAXWELL ROAD EXISTING PAVEMENT CORES					
CORE NUMBER	STATION	OFFSET	ASPHALT THICKNESS (INCHES)	CONCRETE THICKNESS (INCHES)	AGG BASE THICKNESS (INCHES)
B-1	136+00	5' RT	NONE	8	28
B-2	139+50	5' LT	9	NONE	NONE



- LEGEND**
- PAVEMENT REMOVAL (FULL DEPTH)
 - HMA SURFACE REMOVAL
 - DRIVEWAY PAVEMENT REMOVAL
 - CURB REMOVAL/ COMB. CURB & GUTTER REMOVAL
 - ITEMS TO BE REMOVED
 - ITEMS TO BE RELOCATED
 - ITEMS TO BE ADJUSTED
 - PAVEMENT CORE LOCATION (SEE THIS SHEET FOR TABLE)



MODEL: R:\cmt\Illinois - Plan 1 (Sheet)
 FILE NAME: L:\p\2021\20210101\Roadway\Sheet\Maxwell_Removal_Plan.dgn



USER NAME = byedsaad
 PLOT SCALE = 0.16666833' / in.
 PLOT DATE = 10/26/2023

DESIGNED - IHS
 DRAWN - IHS
 CHECKED - EMM
 DATE - AUG 2023

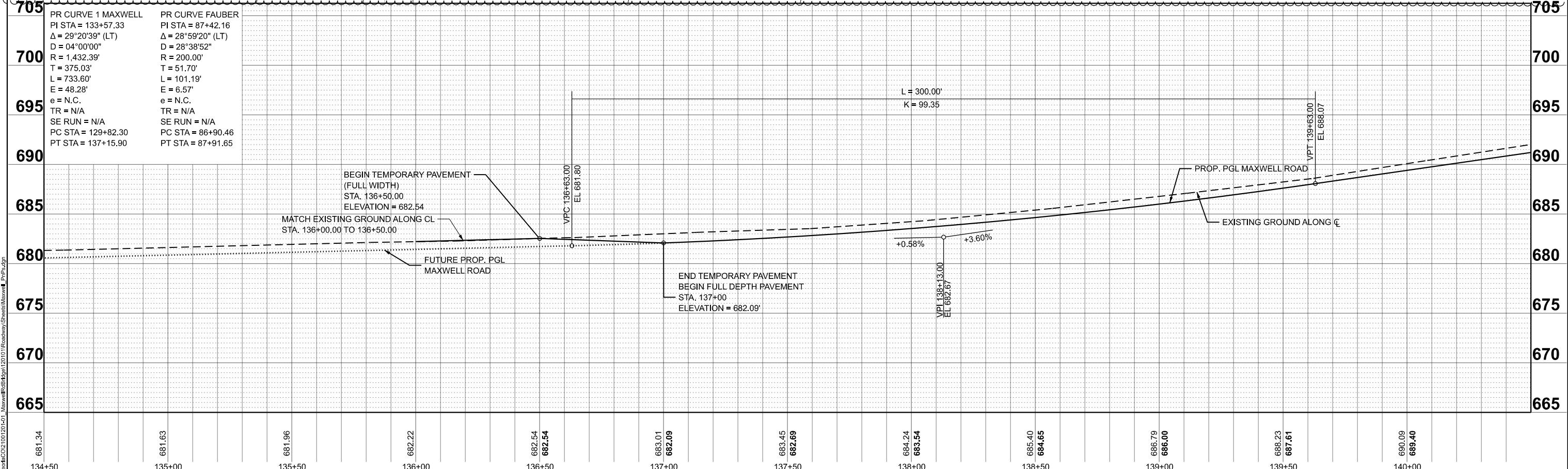
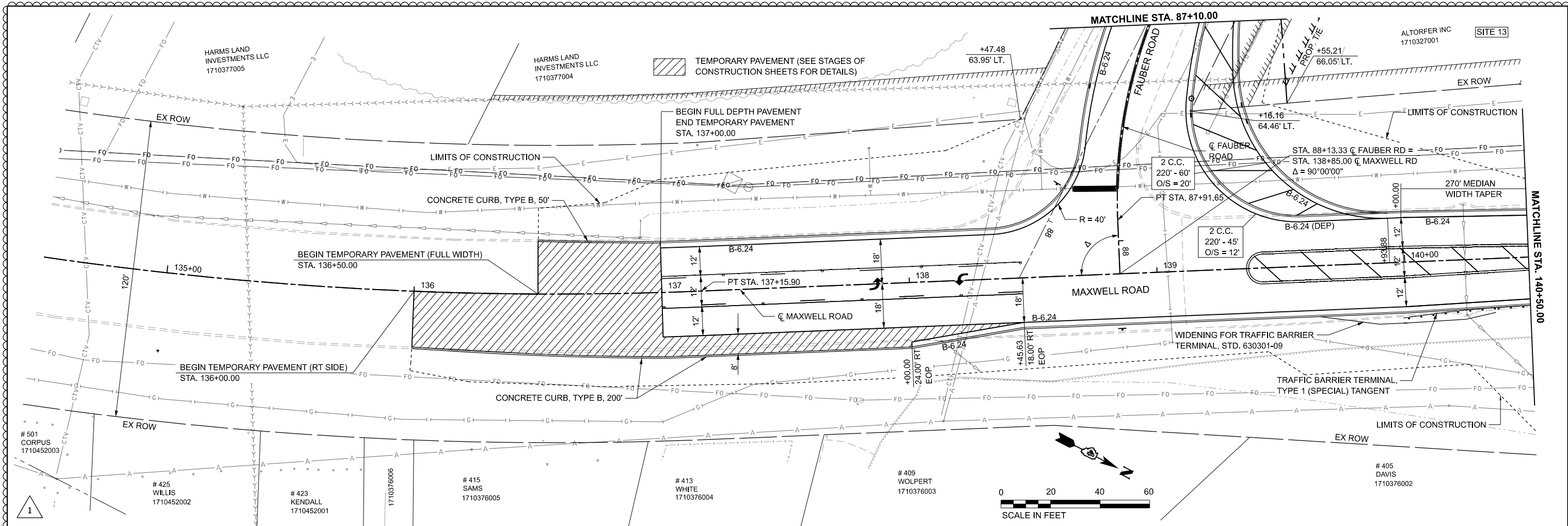
REVISED - 10/26/2023
 REVISED -
 REVISED -
 REVISED -

STATE OF ILLINOIS
DEPARTMENT OF TRANSPORTATION

REMOVAL PLANS
MAXWELL ROAD BRIDGE REHABILITATION

SCALE: 1"=20' SHEET 1 OF 3 SHEETS STA. 137+00 TO STA. 142+00

F.A.U. RTE.	SECTION	COUNTY	TOTAL SHEETS	SHEET NO.
6577	19-00115-00-BR	PEORIA	99	18
CONTRACT NO. 89815				
ILLINOIS FED. AID PROJECT				



681.34	681.63	681.96	682.22	682.54	682.54	683.01	682.09	683.45	682.69	684.24	683.54	685.40	684.65	686.79	686.00	688.23	687.61	690.09	689.40
134+50	135+00	135+50	136+00	136+50	137+00	137+50	138+00	138+50	139+00	139+50	140+00								

CMT

License No. 184-000613

© Copyright CMT, Inc.

USER NAME = Isyedsaad	DESIGNED - IHS	REVISED - 10/26/2023
PLOT SCALE = 0.16666633' / in.	DRAWN - IHS	REVISED -
PLOT DATE = 10/26/2023	CHECKED - EMM	REVISED -
	DATE - AUG 2023	REVISED -

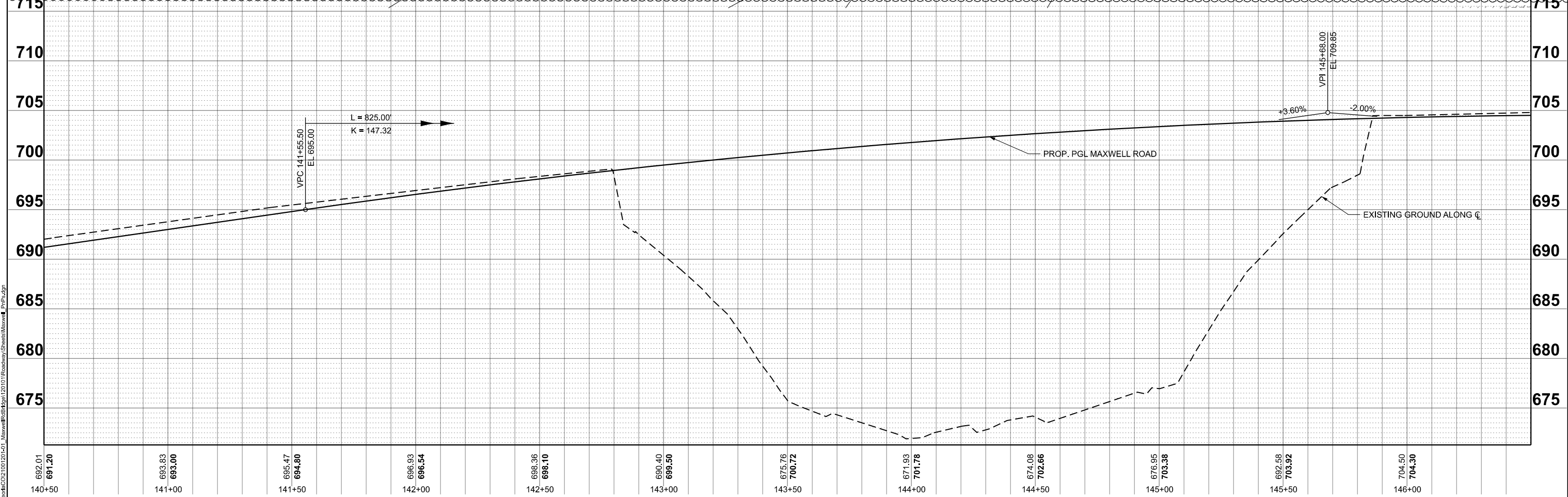
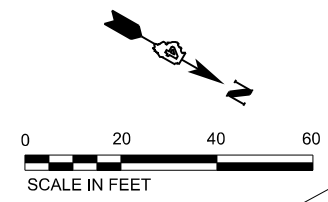
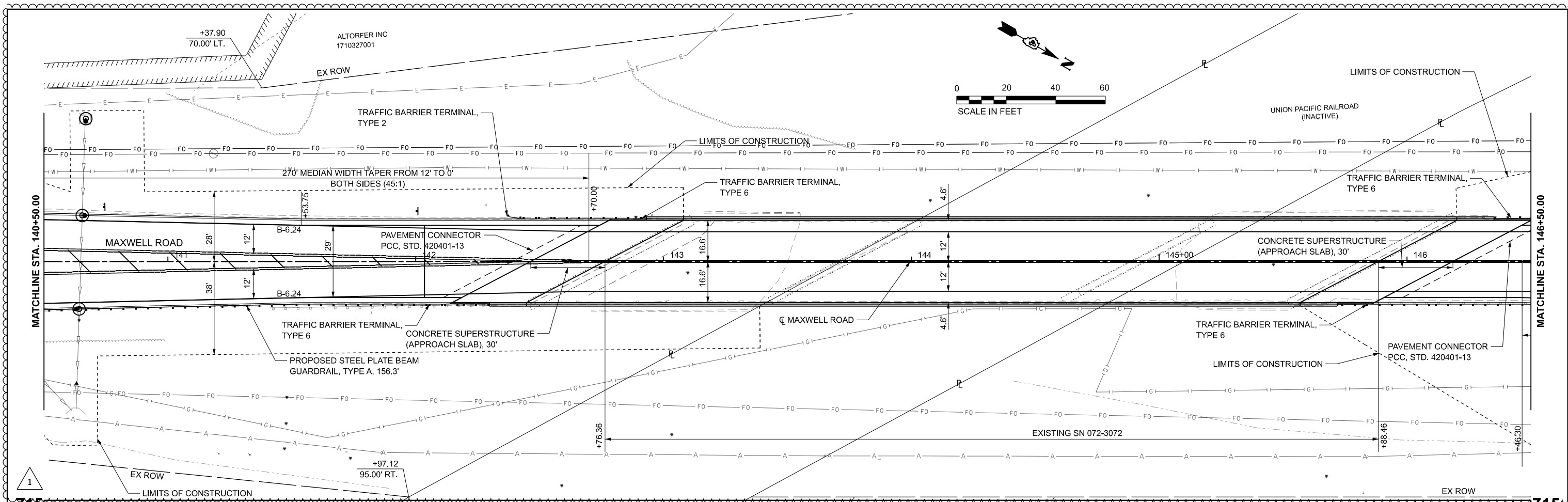
**STATE OF ILLINOIS
DEPARTMENT OF TRANSPORTATION**

**PLAN AND PROFILE
MAXWELL ROAD BRIDGE REHABILITATION**

SCALE: 1"=20'

SHEET 1 OF 5 SHEETS STA. 134+50 TO STA. 140+50

F.A.U. RTE. 6577	SECTION 19-00115-00-BR	COUNTY PEORIA	TOTAL SHEETS 99	SHEET NO. 21
CONTRACT NO. 89815				
ILLINOIS FED. AID PROJECT				



692.01	693.83	695.47	696.93	698.36	699.40	675.76	671.93	674.08	676.95	692.58	704.50
140+50	141+00	141+50	142+00	142+50	143+00	143+50	144+00	144+50	145+00	145+50	146+00

CMT	USER NAME = Isyedsaad	DESIGNED - IHS	REVISED - 10/26/2023
	PLOT SCALE = 0.16666633' / in.	DRAWN - IHS	REVISED -
	PLOT DATE = 10/26/2023	CHECKED - EMM	REVISED -
		DATE - AUG 2023	REVISED -

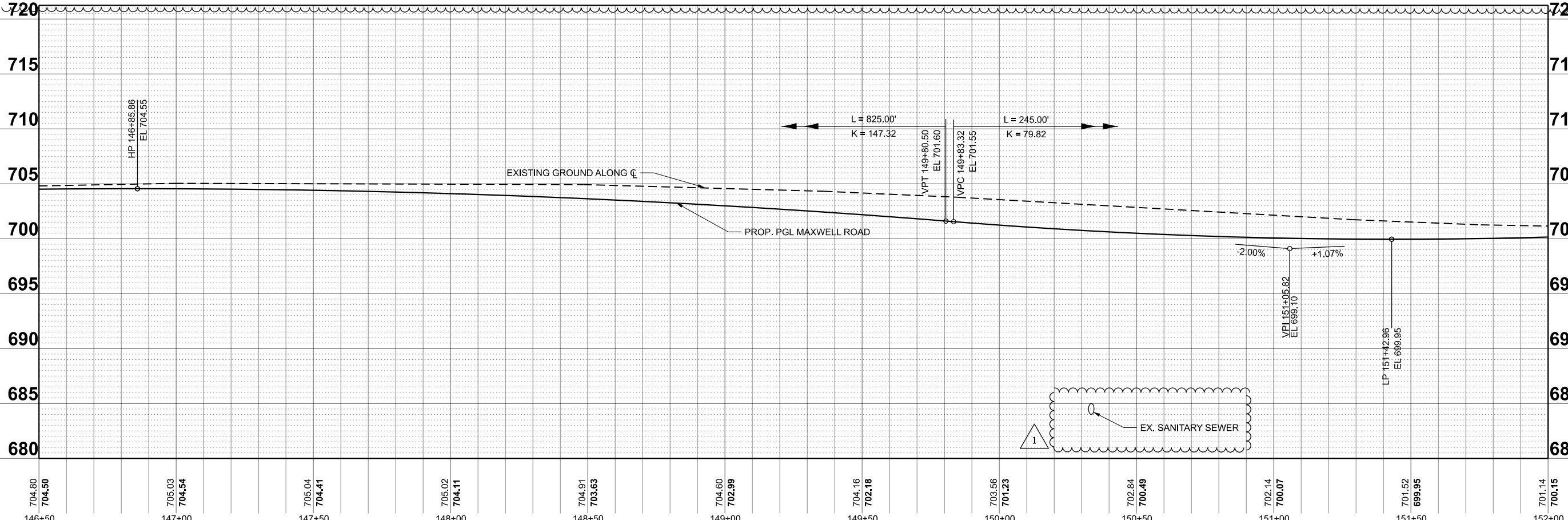
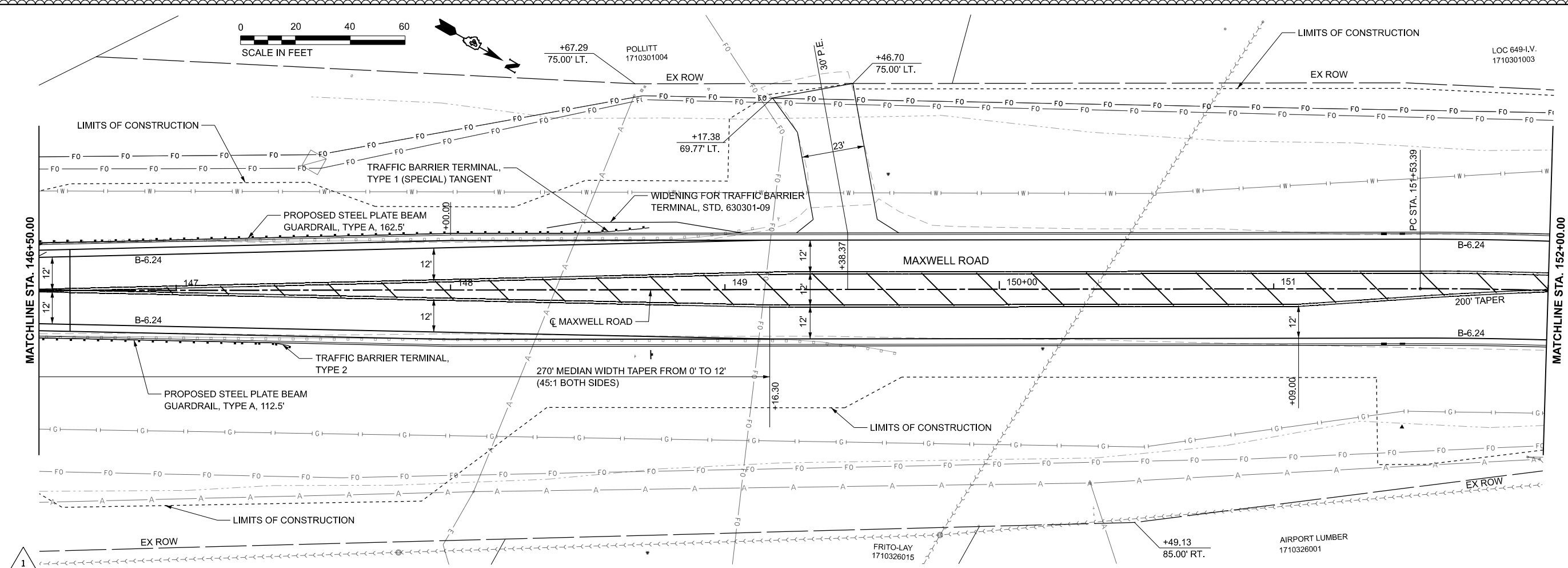
**STATE OF ILLINOIS
DEPARTMENT OF TRANSPORTATION**

**PLAN AND PROFILE
MAXWELL ROAD BRIDGE REHABILITATION**

SCALE: 1"=20' SHEET 2 OF 5 SHEETS STA. 140+50 TO STA. 146+50

F.A.U. RTE. 6577	SECTION 19-00115-00-BR	COUNTY PEORIA	TOTAL SHEETS 99	SHEET NO. 22
CONTRACT NO. 89815				
ILLINOIS FED. AID PROJECT				

MODEL Maxwell_Plan_Profile_Sheet.dwg
 FILE NAME: E:\Projects\2023\10\20\140115\Maxwell\Bridges\Sheet\Maxwell_Plan.dwg
 License No. 184-000613 Copyright CMT, Inc.

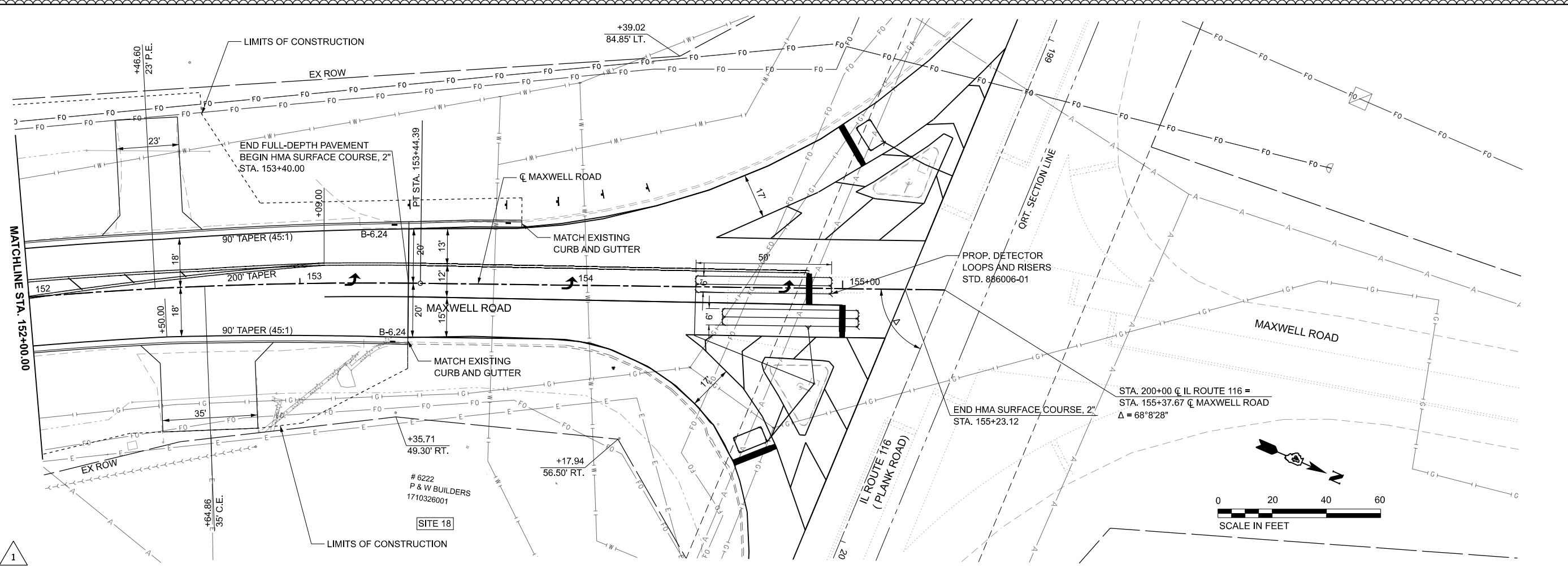


704.80 704.50 146+50	705.03 704.54 147+00	705.04 704.41 147+50	705.02 704.11 148+00	704.91 703.63 148+50	704.60 702.99 149+00	704.16 702.18 149+50	703.56 701.23 150+00	702.84 700.49 150+50	702.14 700.07 151+00	701.52 699.95 151+50	701.14 700.15 152+00
----------------------------	----------------------------	----------------------------	----------------------------	----------------------------	----------------------------	----------------------------	----------------------------	----------------------------	----------------------------	----------------------------	----------------------------

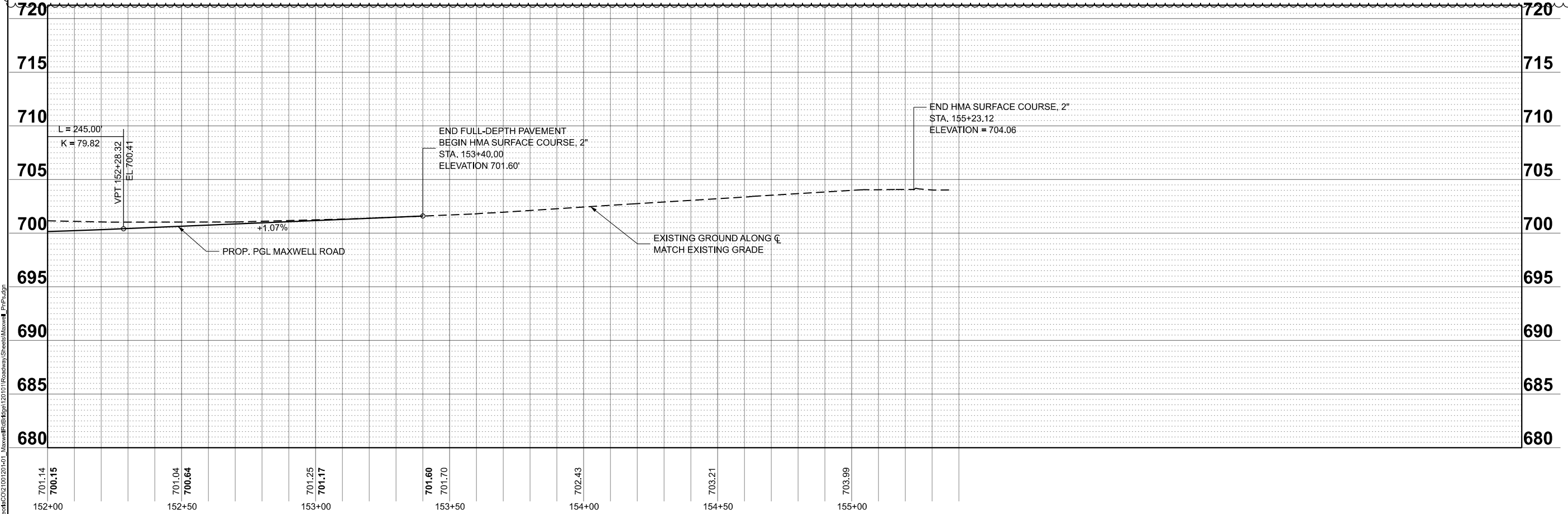
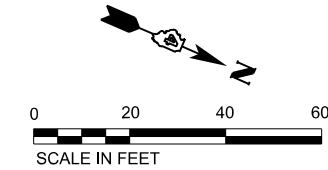
	USER NAME = Isyedsaad	DESIGNED - IHS	REVISED - 10/26/2023
	PLOT SCALE = 0.16666633' / in.	DRAWN - IHS	REVISED -
	PLOT DATE = 10/26/2023	CHECKED - EMM	REVISED -
	DATE - AUG 2023	REVISED -	

STATE OF ILLINOIS DEPARTMENT OF TRANSPORTATION		PLAN AND PROFILE MAXWELL ROAD BRIDGE REHABILITATION	
		SCALE: 1"=20'	SHEET 3 OF 5 SHEETS STA. 146+50 TO STA. 152+00

F.A.U. RTE.	SECTION	COUNTY	TOTAL SHEETS	SHEET NO.
6577	19-00115-00-BR	PEORIA	99	23
CONTRACT NO. 89815				
ILLINOIS FED. AID PROJECT				



PR CURVE 2 MAXWELL
 P.I STA = 152+49.02
 $\Delta = 07^{\circ}17'44''$ (RT)
 $D = 03^{\circ}49'11''$
 $R = 1,500.00'$
 $T = 95.63'$
 $L = 191.00'$
 $E = 3.05'$
 $e = N.C.$
 PC STA = 151+53.39
 PT STA = 153+44.39



MODEL: R19-1 (Sheet)
 FILE NAME: E:\Roadway\B4\19-00115-00-01_Maxwell\B4\19-00115-00-01_Roadway\Sheet4\Maxwell_P19-01.dgn



USER NAME = Isyedsaad
 PLOT SCALE = 0.16666633' / in.
 PLOT DATE = 10/26/2023

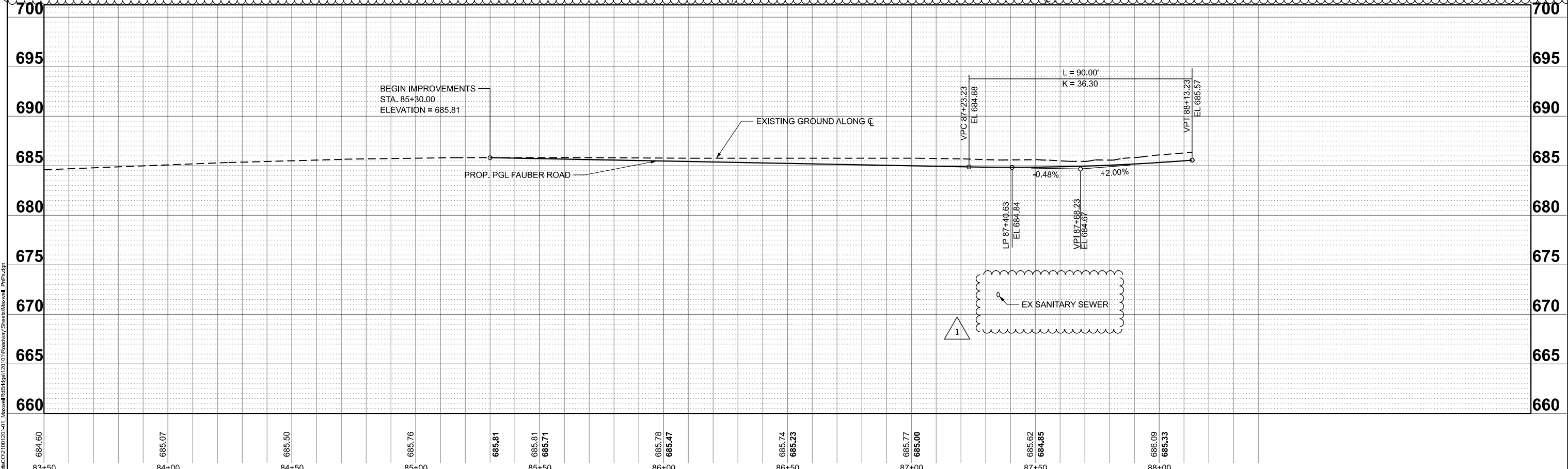
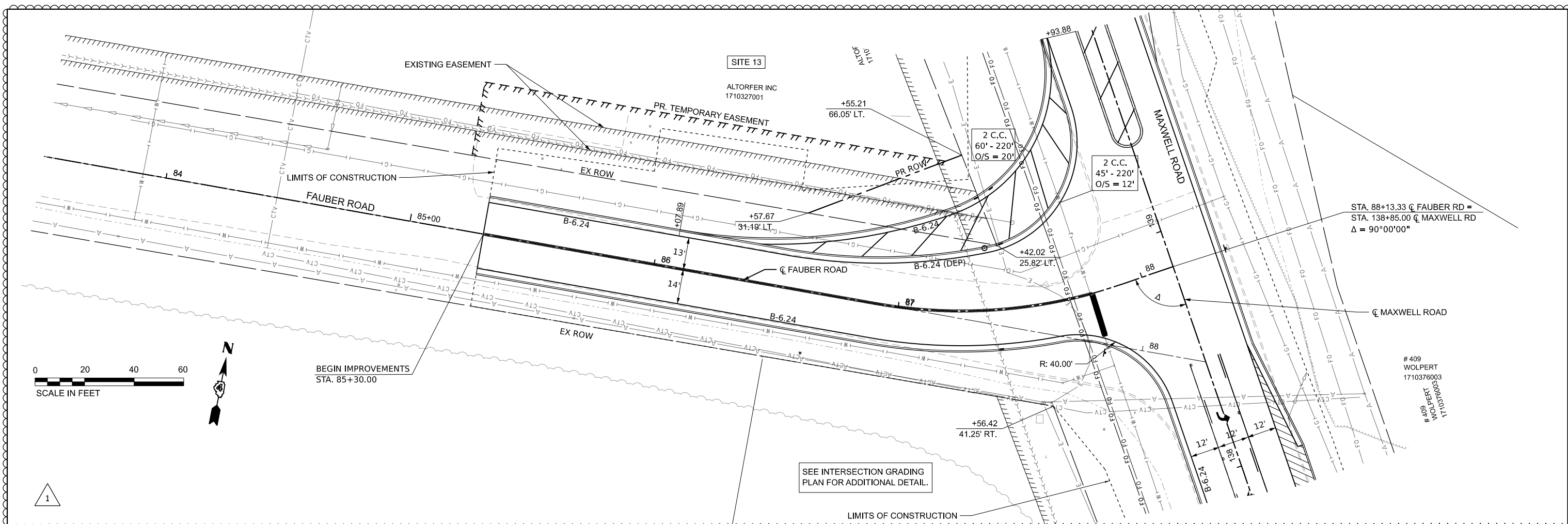
DESIGNED - IHS	REVISED - 10/26/2023
DRAWN - IHS	REVISED -
CHECKED - EMM	REVISED -
DATE - AUG 2023	REVISED -

STATE OF ILLINOIS
 DEPARTMENT OF TRANSPORTATION

PLAN AND PROFILE
 MAXWELL ROAD BRIDGE REHABILITATION

SCALE: 1"=20' SHEET 4 OF 5 SHEETS STA. 152+00 TO STA. 155+00

F.A.U. RTE.	SECTION	COUNTY	TOTAL SHEETS	SHEET NO.
6577	19-00115-00-BR	PEORIA	99	24
CONTRACT NO. 89815				
ILLINOIS FED. AID PROJECT				



MODEL: Fauber_Plan_Profile.dwg
 FILE NAME: L:\Projects\2021\10\20\101\Maxwell\Bridges\120101\Roadway\Sheet\Maxwell_Plan.dwg



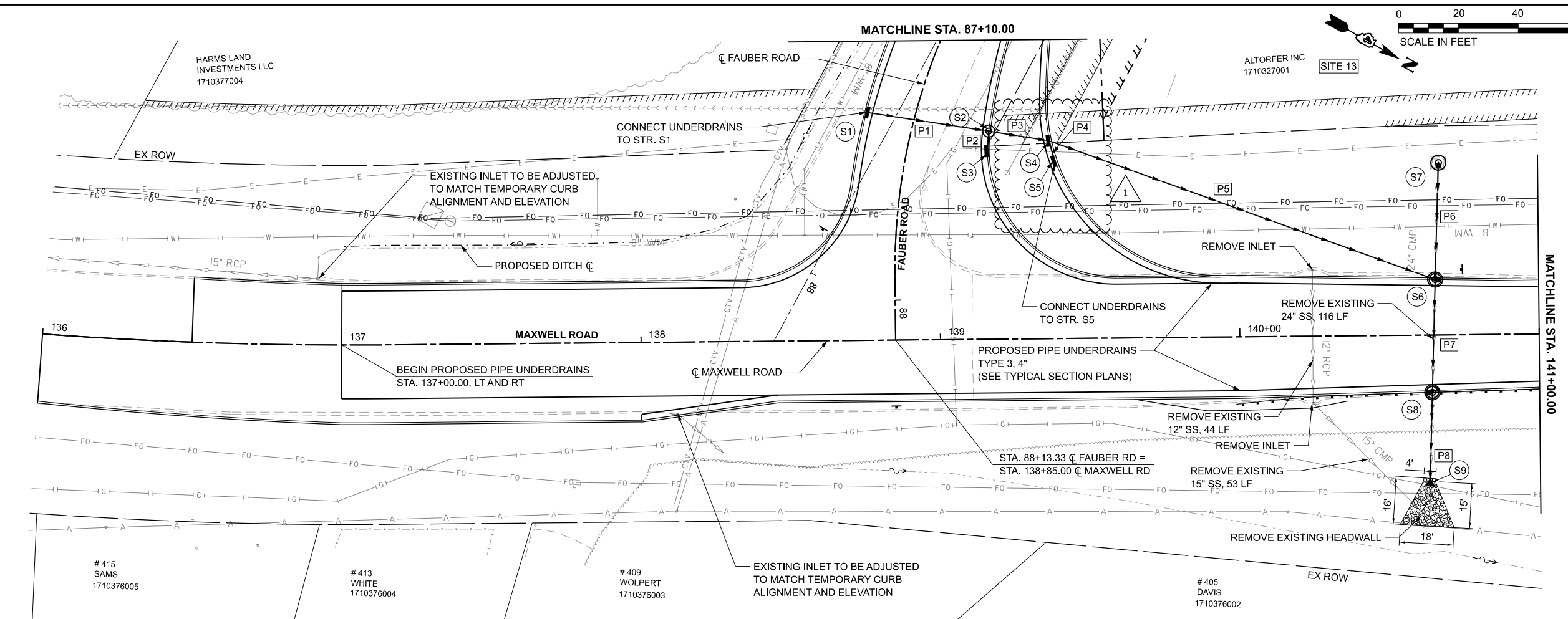
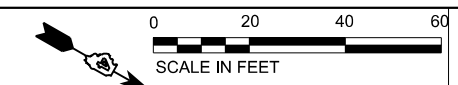
USER NAME = Isyedsaad	DESIGNED - IHS	REVISED - 10/26/2023
PLOT SCALE = 0.16666633' / in.	DRAWN - IHS	REVISED -
PLT DATE = 10/26/2023	CHECKED - EMM	REVISED -
	DATE - AUG 2023	REVISED -

STATE OF ILLINOIS
 DEPARTMENT OF TRANSPORTATION

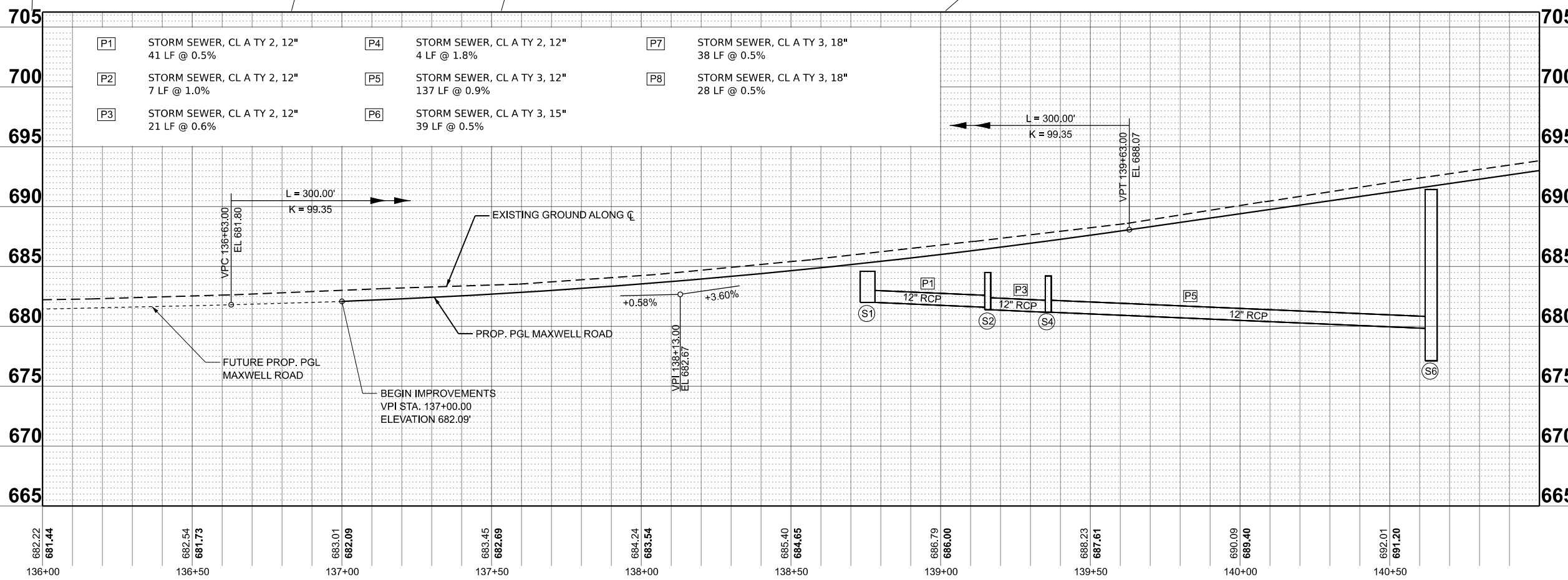
PLAN AND PROFILE
 MAXWELL ROAD BRIDGE REHABILITATION

SCALE: 1"=20' SHEET 5 OF 5 SHEETS STA. 83+50 TO STA. 88+00

F.A. U RTE.	SECTION	COUNTY	TOTAL SHEETS	SHEET NO.
6577	19-00115-00-BR	PEORIA	99	25
CONTRACT NO. 89815				
ILLINOIS FED. AID PROJECT				



- (S1) INLET TYPE G-1 SP
STD 604001-D4
STA. 87+40.63, 16.0' RT
RIM = 684.60
INV (P1) = 681.43
- (S2) MH TY A, 4' DIA.
TY 23 F&G
STD 604086-05
STA. 87+36.22, 25.0' LT
RIM = 684.50
INV (P1) = 681.22
INV (P2) = 682.43
INV (P3) = 681.12
- (S3) INLET TYPE A,
TY 23 F&G
STD 604086-05
STA. 87+43.83, 26.3' LT
RIM = 684.52
INV (P2) = 682.50
- (S4) INLET TYPE G-1 DOUBLE SP
STD 604001-D4
STA. 87+33.34, 45.4' LT
RIM = 684.20
INV (P3) = 681.00
INV (P4) = 682.13
INV (P5) = 681.00
- (S5) INLET TYPE G-1 DOUBLE SP
STD 604001-D4
STA. 87+41.23, 48.9' LT
RIM = 684.20
INV (P4) = 682.20
- (S6) IN-MH TYPE G-1 5' DIA. SP
STD 604001-D4
STA. 140+65.41, 18.5' LT
RIM = 691.43
INV (P5) = 679.81
INV (P6) = 677.12
INV (P7) = 679.81
- (S7) MH TY A TY 37 GRATE, 4' DIA.
STD 604301-D4
STA. 140+66.70, 55.6' LT
RIM = 679.31
INV (P6) = 677.31
- (S8) IN-MH TYPE G-1 5' DIA. SP
STD 604001-D4
STA. 140+64.15, 19.2' RT
RIM = 691.33
INV (P7) = 679.62
INV (P8) = 679.62
- (S9) PRECAST FES 18"
STA. 140+62.78, 59.0' RT
INV = 679.47



NOTES:
 1. END SECTION STATIONS, OFFSETS, AND ELEVATIONS ARE GIVEN AT THE CENTER OF TOE.
 2. MANHOLE AND INLET STATIONS AND OFFSETS ARE GIVEN AT THE CENTER OF STRUCTURE, RIM ELEVATIONS ARE GIVEN AT THE CENTER OF GRATE/LID OR AT THE EDGE OF PAVEMENT FOR CURB STRUCTURES.

682.22	681.44	682.54	681.73	683.01	682.09	683.45	682.89	684.24	683.54	685.40	684.65	686.79	686.00	688.23	687.61	690.09	689.40	692.01	691.20
136+00	136+50	137+00	137+50	138+00	138+50	139+00	139+50	140+00	140+50										

USER NAME = Isyedsaad	DESIGNED - IHS	REVISED - 10/26/2023
DRAWN - IHS	CHECKED - CJW	REVISED -
PLOT SCALE = 0.16666633' / in.	DATE - AUG 2023	REVISED -
PLOT DATE = 10/26/2023		

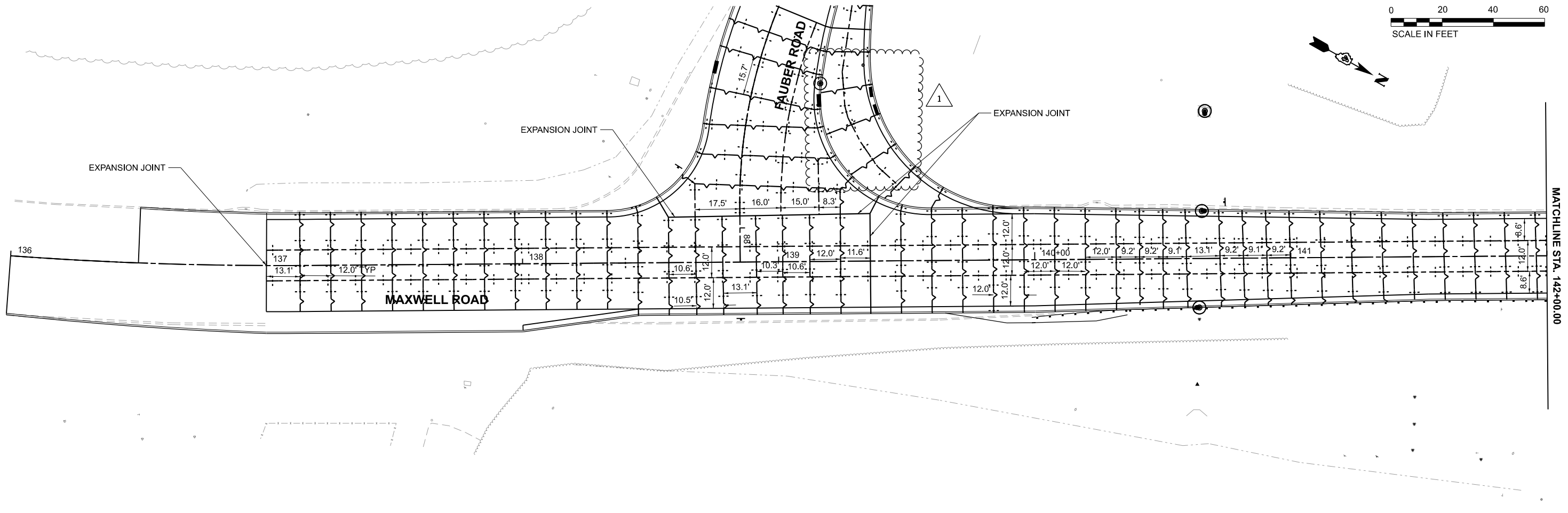
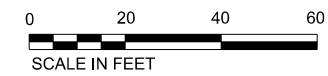
**STATE OF ILLINOIS
DEPARTMENT OF TRANSPORTATION**

**DRAINAGE PLAN AND PROFILE
MAXWELL ROAD BRIDGE REHABILITATION**

SCALE: 1"=20' SHEET 1 OF 5 SHEETS STA. 136+00 TO STA. 141+00

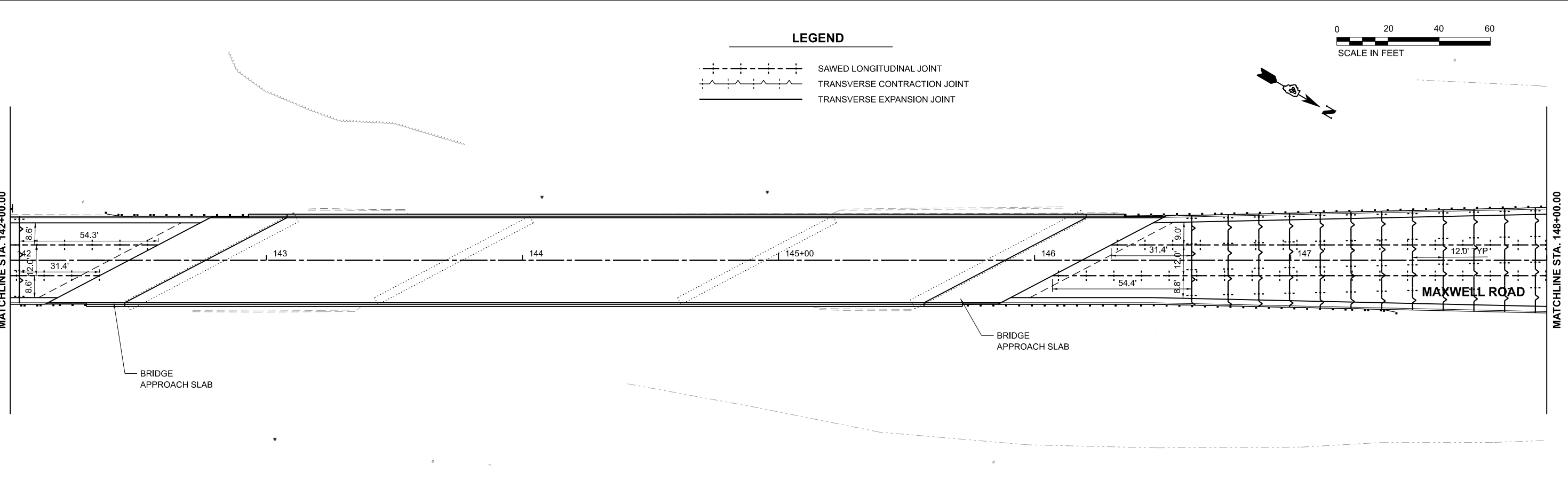
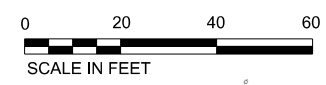
F.A.U. RTE.	SECTION	COUNTY	TOTAL SHEETS	SHEET NO.
6577	19-00115-00-BR	PEORIA	99	28
CONTRACT NO. 89815				
ILLINOIS FED. AID PROJECT				

MODEL: Drainage Plan Profile Plus (Sheet)
 FILE NAME: E:\Road\2023\10\26\2023\10262023\10262023\Roadway\Sheet\Maxwell_DrainagePlan_P1.dwg
 License No. 184-006613 © Copyright CMT, Inc.



LEGEND

- SAWED LONGITUDINAL JOINT
- TRANSVERSE CONTRACTION JOINT
- TRANSVERSE EXPANSION JOINT



MODEL Maxwell_C01 - Plan 1 (Sheet)
 FILE NAME: L:\Road\C02\10120101_MaxwellBR48.dgn 12/01/2010 10:00:00 AM MaxwellBR48.dgn_johnp.dgn



USER NAME = Isyedsaad	DESIGNED - ZMS	REVISED - 10/26/2023
	DRAWN - ZMS	REVISED -
PLOT SCALE = 0.16666633' / in.	CHECKED - EMM	REVISED -
PLOT DATE = 10/26/2023	DATE - AUG 2023	REVISED -

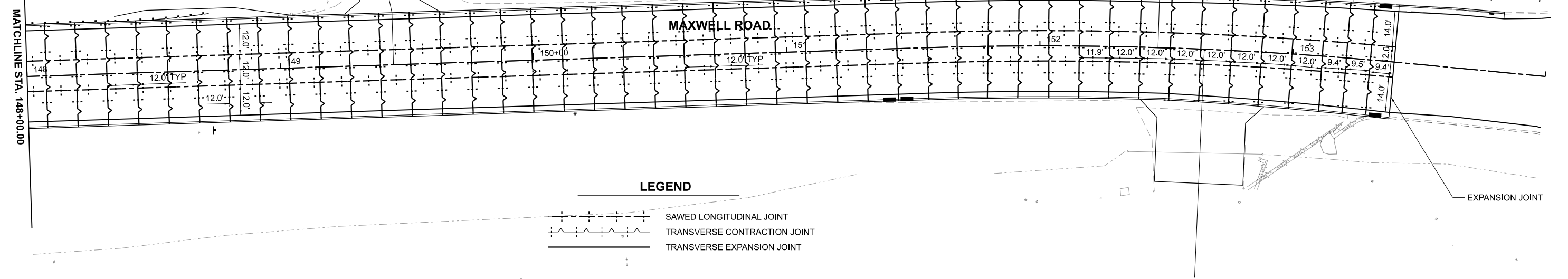
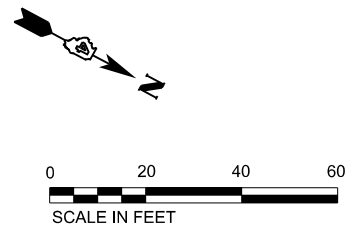
**STATE OF ILLINOIS
DEPARTMENT OF TRANSPORTATION**

**PAVEMENT JOINTING PLANS
MAXWELL ROAD BRIDGE REHABILITATION**

SCALE: 1"=20' SHEET 1 OF 2 SHEETS STA. 136+00.00 TO STA. 148+00.00

F.A.U. RTE.	SECTION	COUNTY	TOTAL SHEETS	SHEET NO.
6577	19-00115-00-BR	PEORIA	99	37
CONTRACT NO. 89815				

ILLINOIS FED. AID PROJECT

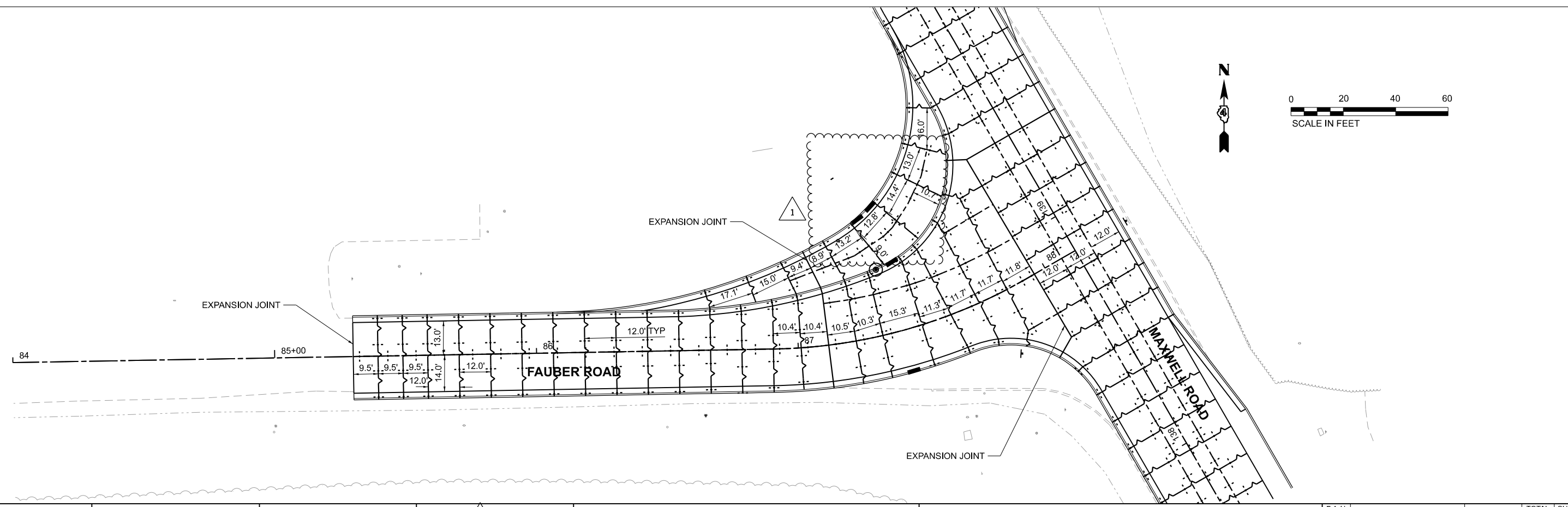


LEGEND

— SAWED LONGITUDINAL JOINT

- - - TRANSVERSE CONTRACTION JOINT

— TRANSVERSE EXPANSION JOINT



**STATE OF ILLINOIS
DEPARTMENT OF TRANSPORTATION**

**PAVEMENT JOINTING PLANS
MAXWELL ROAD BRIDGE REHABILITATION**

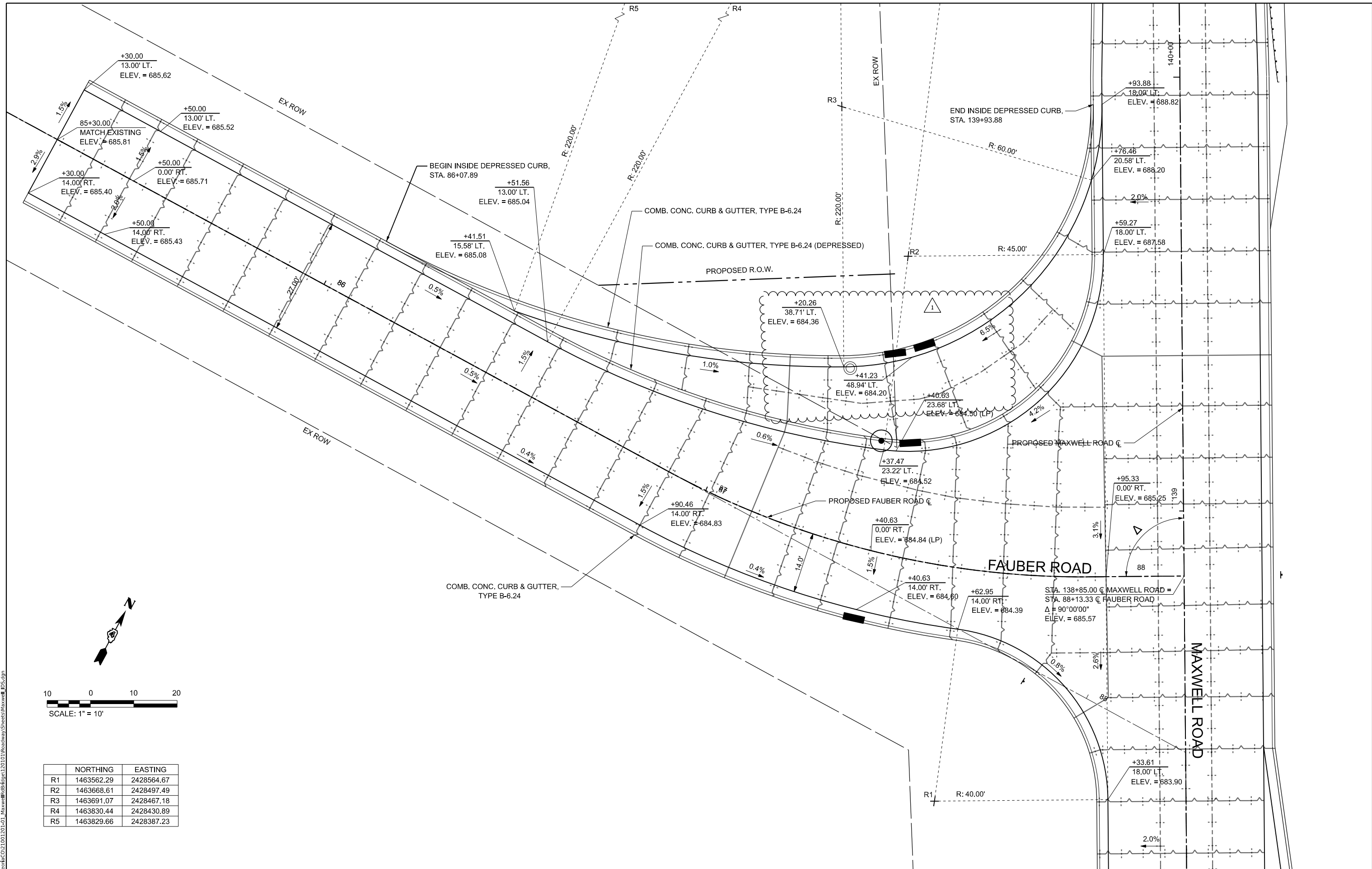
F.A.U. RTE.	SECTION	COUNTY	TOTAL SHEETS	SHEET NO.
6577	19-00115-00-BR	PEORIA	99	38
CONTRACT NO. 89815				

SCALE: 1"=20' SHEET 2 OF 2 SHEETS STA. 148+00.00 TO STA. 154+00.00

USER NAME = Isyedsaad	DESIGNED - ZMS	REVISED - 10/26/2023
DRAWN - ZMS	REVISOR -	
PLOT SCALE = 0.16666633' / in.	CHECKED - EMM	REVISOR -
PLOT DATE = 10/26/2023	DATE - AUG 2023	REVISOR -



MODEL: Maxwell_C01 - Pkg 3 (Sheet)
 FILE NAME: L:\Road\C02\10120101_Maxwell\B484819120101\Roadway\Maxwell_Jointing.dgn



	NORTHING	EASTING
R1	1463562.29	2428564.67
R2	1463668.61	2428497.49
R3	1463691.07	2428467.18
R4	1463830.44	2428430.89
R5	1463829.66	2428387.23

MODEL: Fauber_IDS1 [Sheet1]
 FILE NAME: E:\projects\20210110\roadway\Sheets\Maxwell_IDS.dgn
 License No. 184-000613 Copyright CMT, Inc.



USER NAME = isyedsaad	DESIGNED - IHS	REVISED - Δ 10/26/2023
DRAWN - IHS	CHECKED - EMM	REVISED -
PLOT SCALE = 0.16666633' / in.	DATE - AUG 2023	REVISED -
PLOT DATE = 10/26/2023		

STATE OF ILLINOIS
DEPARTMENT OF TRANSPORTATION

INTERSECTION DETAIL
MAXWELL ROAD BRIDGE REHABILITATION
 SCALE: 1"=10' SHEET 1 OF 1 SHEETS STA. TO STA.

F.A.U. RTE. 6577	SECTION 19-00115-00-BR	COUNTY PEORIA	TOTAL SHEETS 99	SHEET NO. 39
CONTRACT NO. 89815			ILLINOIS FED. AID PROJECT	

ORIGINAL SURVEY	SURVEYED	BY	DATE
NOTE BOOK	PLOTTED		
	TEMPLATE		
	AREAS		
	AREAS CHECKED		

FINAL SURVEY	SURVEYED	BY	DATE
NOTE BOOK	PLOTTED		
	TEMPLATE		
	AREAS		
	AREAS CHECKED		

MODEL: Maxwell CL - 149+00.00 [Sheet]
 FILE NAME: L:\PeoriaCO21001201-01_MaxwellRdBridge\120101Roadway\Sheets\Maxwell_XSC.dgn

License No. 184-000813



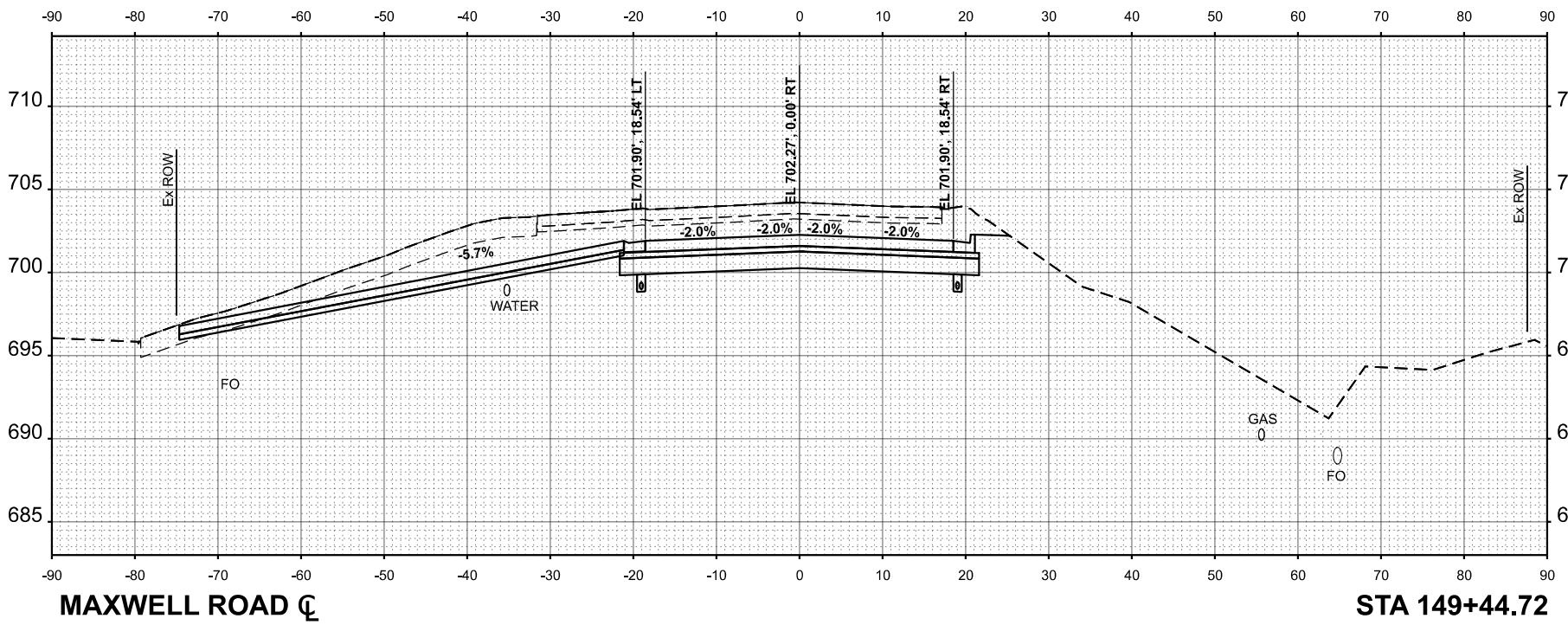
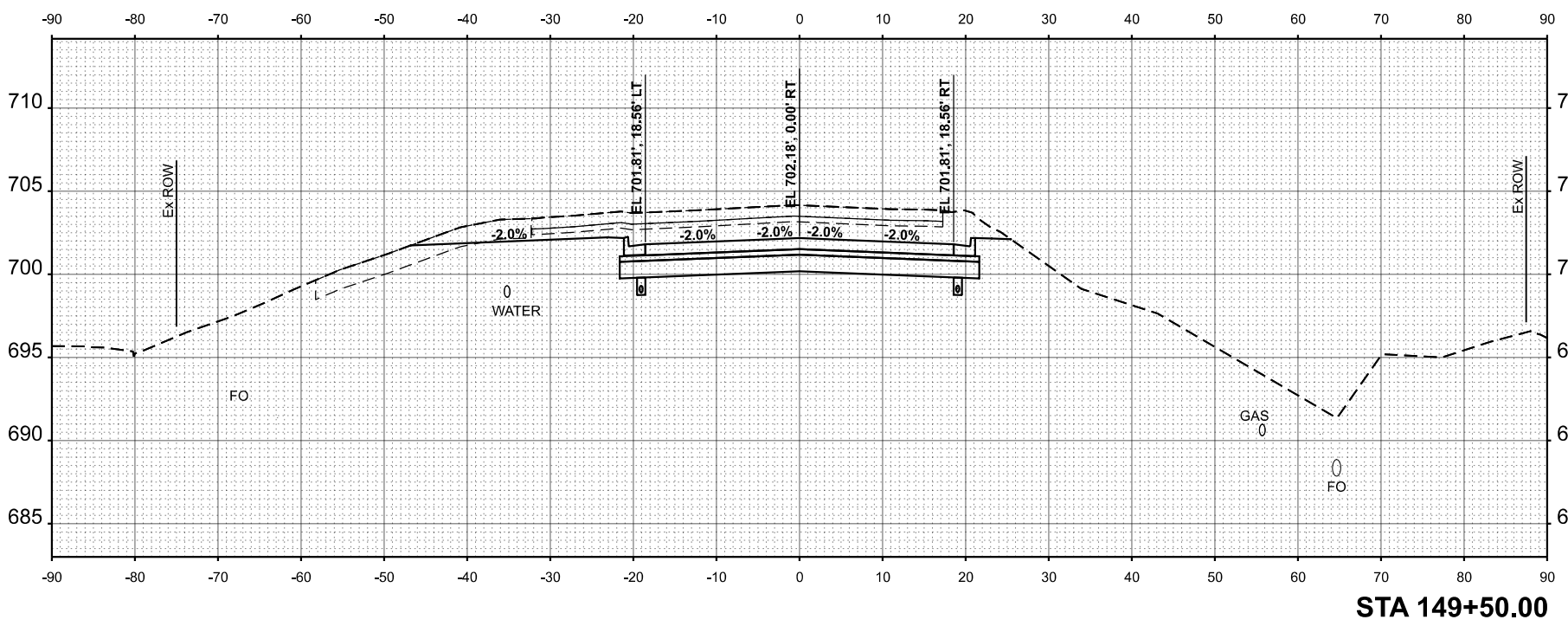
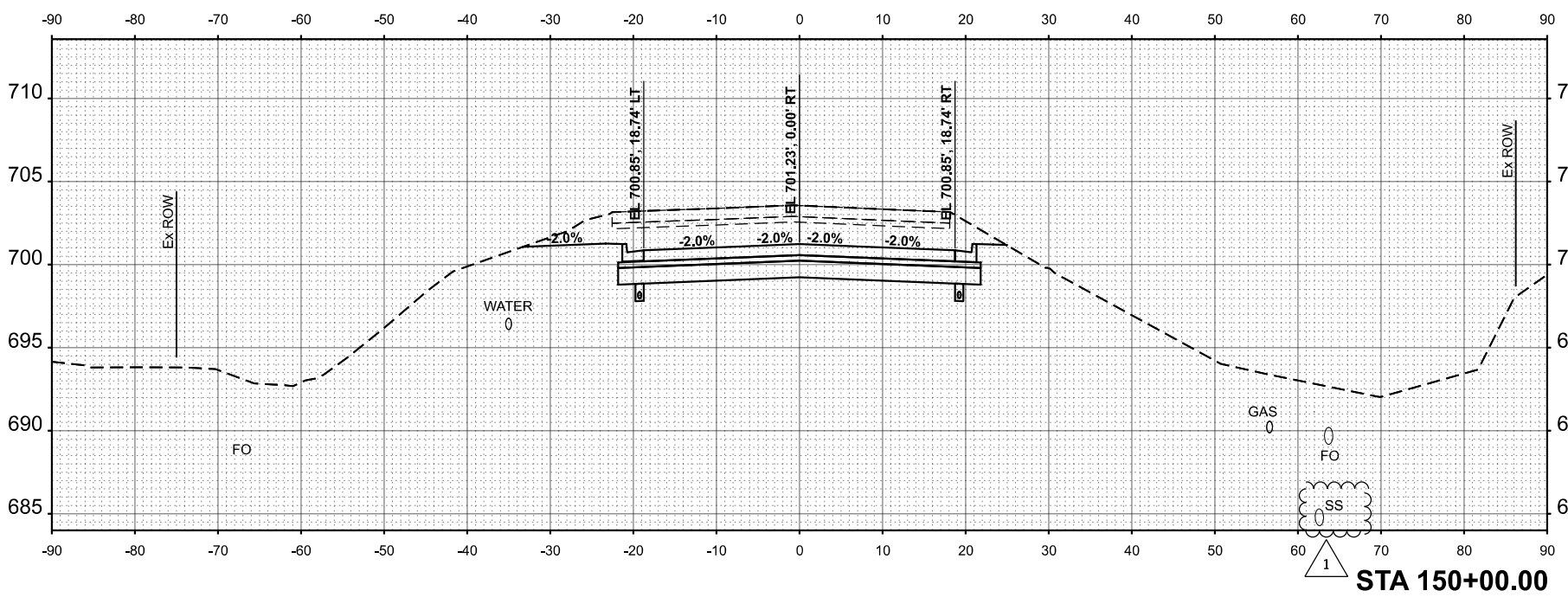
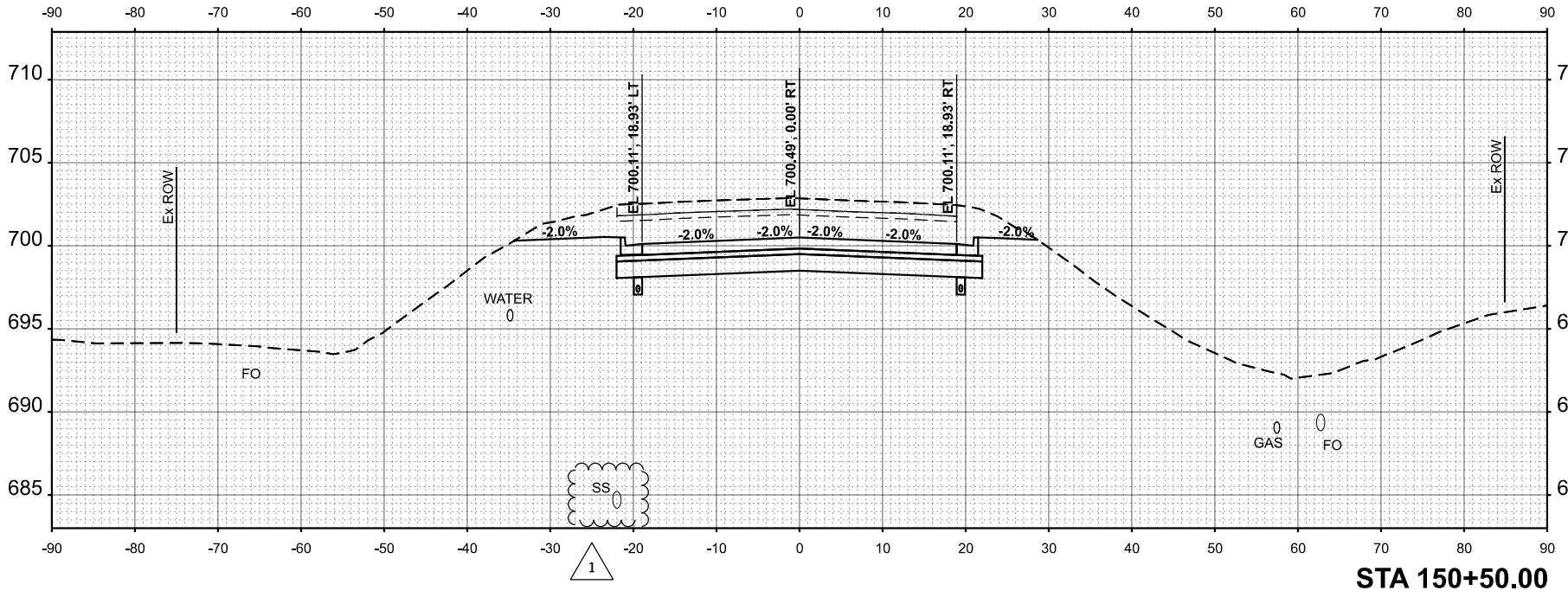
USER NAME = kysheed
 DRAWN = ZMS
 CHECKED = EMM
 DATE = AUG 2023

DESIGNED = ZMS
 DRAWN = ZMS
 CHECKED = EMM
 DATE = AUG 2023

STATE OF ILLINOIS
 DEPARTMENT OF TRANSPORTATION

CROSS SECTIONS
 MAXWELL ROAD BRIDGE REHABILITATION
 SHEET 11 OF 14 SHEETS
 STA. _____ TO STA. _____

FAU. RTE. 6577
 SECTION 19-001150-04R
 COUNTY PEORIA
 CONTRACT NO. 09815



MAXWELL ROAD CL

STA 149+44.72