

INDEX OF SHEETS

1	COVER SHEET
2	INDEX OF SHEETS AND STANDARDS
3	GENERAL NOTES AND COMMITMENTS
4-12	SUMMARY OF QUANTITIES
13	SCHEDULE OF QUANTITIES
14-17	TYPICAL SECTIONS
18	ALIGNMENT, TIES, AND BENCHMARKS
19-20	REMOVAL PLAN
21-22	ROADWAY PLAN
23	ROADWAY PROFILE
24	DETOUR PLAN
25-27	LANDSCAPING AND EROSION CONTROL PLAN
28	DRAINAGE SCHEDULES AND LEGEND
29-30	DRAINAGE AND WATER MAIN PLAN
31-32	DRAINAGE AND WATER MAIN PROFILES
33	STREAMBANK STABILIZATION PLAN
31-38	STREAMBANK STABILIZATION CROSS SECTIONS
39	COMPENSATORY STORAGE GRADING PLAN
40-43	PLAT OF HIGHWAYS
44-45	INTERSECTION GRADING DETAILS
46-48	SIDEWALK DETAIL PLAN
49-51	PAVEMENT MARKING AND SIGNING PLAN
52	LIGHTING GENERAL NOTES
53-55	LIGHTING PLAN
56	LIGHTING DETAILS
57	CULVERT GENERAL PLAN AND ELEVATION
58	CULVERT GENERAL NOTES AND DETAILS
59-61	CULVERT DETAILS
62	ARCHITECTURAL AND RAILING DETAILS
63	EXISTING BORING LOGS
64-75	DISTRICT AND LOCAL STANDARDS
76-89	PROPOSED ROADWAY CROSS SECTIONS

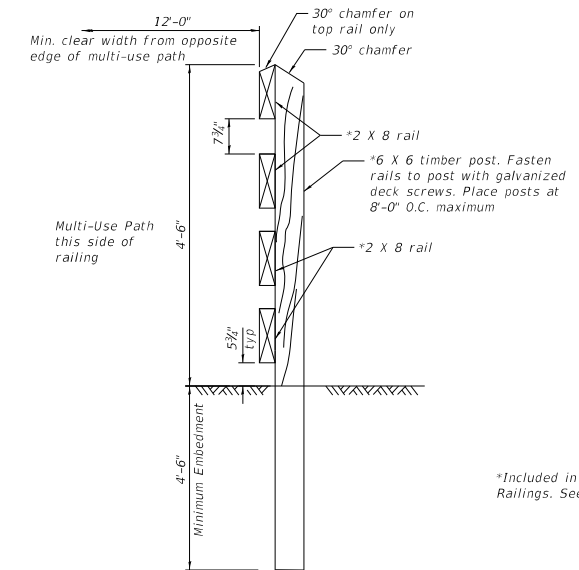
HIGHWAY STANDARDS

000001-08	STANDARD SYMBOLS, ABBREVIATIONS AND PATTERNS
001001-02	AREAS OF REINFORCEMENT BARS
001006	DECIMAL OF AN INCH AND OF A FOOT
280001-07	TEMPORARY EROSION CONTROL SYSTEMS
424001-11	PERPENDICULAR CURB RAMPS FOR SIDEWALKS
515001-04	NAME PLATES FOR BRIDGES
542301-03	PRECAST REINFORCED CONCRETE FLARED END SECTION
601001-05	PIPE UNDERDRAINS
601101-02	CONCRETE HEADWALL FOR PIPE UNDERDRAINS
602001-02	CATCH BASIN TYPE A
602011-02	CATCH BASIN TYPE C
602301-04	INLET - TYPE A
602401-07	PRECAST MANHOLE TYPE A 4' (1.22m) DIAMETER
602601-06	PRECAST REINFORCED CONCRETE FLAT SLAB TOP
602701-02	MANHOLE STEPS
604001-05	FRAME AND LIDS TYPE 1
604036-03	GRATE TYPE 8
604051-04	FRAME AND GRATE TYPE 11
604056-04	FRAGE AND GRATE TYPE 11V
606001-08	CONCRETE CURB TYPE B AND COMBINATION CONCRETE CURB AND GUTTER
701001-02	OFF-RD OPERATIONS, 2L, 2W, MORE THAN 15' AWAY
701006-05	OFF-RD OPERATIONS, 2L, 2W, 15' TO 24" FROM PAVEMENT EDGE
701011-04	OFF-RD MOVING OPERATIONS, 2L, 2W, DAY ONLY
701301-04	LANE CLOSURE, 2L, 2W, SHORT TIME OPERATIONS
701311-03	LANE OPERATIONS 2L, 2W MOVING OPERATIONS-DAY ONLY
701501-06	URBAN LANE CLOSURE, 2L, 2W, UNDIVIDED
701801-06	SIDEWALK, CORNER OR CROSSWALK CLOSURE
701901-08	TRAFFIC CONTROL DEVICES
720001-01	SIGN PANEL MOUNTING DETAILS
720006-04	SIGN PANEL ERECTION DETAILS
720011-01	METAL POSTS FOR SIGNS, MARKERS, & DELINEATORS

DISTRICT ONE STANDARDS

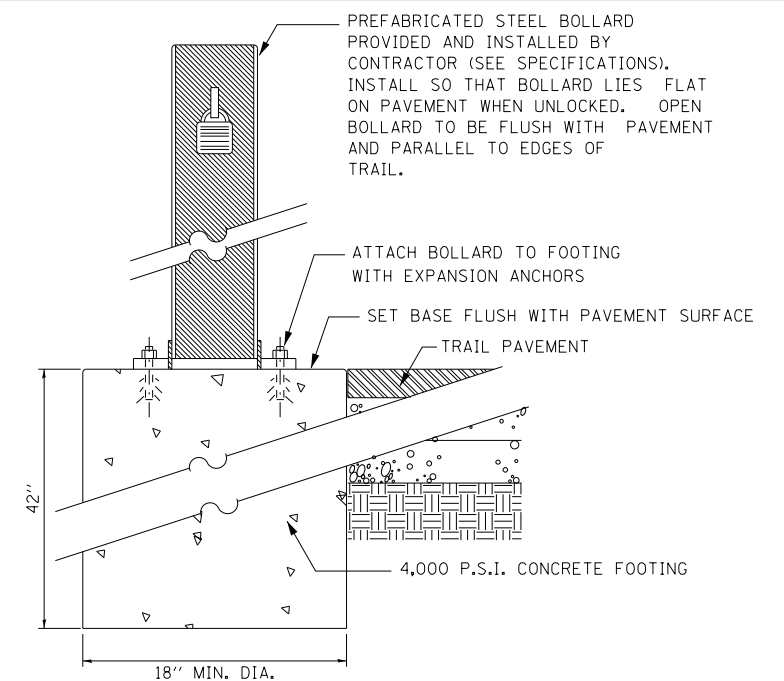
BD-02	DRIVEWAY DETAILS - DISTANCE BETWEEN ROW AND FACE OF CURB < 15' (4.5 m)
BD-32	BUTT JOINTS AND HMA TAPER
TC-10	TRAFFIC CONTROL AND PROTECTION FOR SIDE ROADS, INTERSECTIONS, AND DRIVEWAYS
TC-13	DISTRICT ONE TYPICAL PAVEMENT MARKINGS
TC-21	DETOUR SIGNING FOR CLOSING STATE HIGHWAYS
TC-22	ARTERIAL ROAD INFORMATION SIGN

▲



*Included in the cost of Bicycle Railings. See Roadway Plans

BICYCLE RAILING TYPICAL SECTION



FOOTING AT FOLD DOWN BOLLARD

NOT TO SCALE

FILE NAME = SA\JUL\37800-3799\37665-00\3799\Drawings\CADD\Micros\CADD_Sheets\0812345-sh1-rdstd.dgn



USER NAME = jackd	DESIGNED -	REVISED - ▲ 10/25/23
MODEL NAME = Default	DRAWN -	REVISED -
PLOT SCALE = 2.0000' / in.	CHECKED -	REVISED -
PLOT DATE = 10/27/2023	DATE -	REVISED -

**STATE OF ILLINOIS
DEPARTMENT OF TRANSPORTATION**

**INDIAN BOUNDARY ROAD
INDEX OF SHEETS AND STANDARDS**

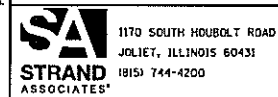
SCALE: SHEET 1 OF 1 SHEETS STA. TO STA.

TR. RTE.	SECTION	COUNTY	TOTAL SHEETS	SHEET NO.
0052	17-00064-00-BR	WILL	89	2
CONTRACT NO. 61H25			ILLINOIS FED. AID PROJECT	

FILE NAME = SA\JL\3788--3789\3765-089\Drawings\CADD\Micro\CADD Sheets\0412245-shc-500.dgn

CODE NO.	ITEM	UNIT	TOTAL QUANTITY	ROADWAY 0004		CULVERT REPLACEMENT S.N. 099-6757 0010		STREET LIGHTING 0021		TRAINEES 0042	
				100% FED	100% LOCAL	100% FED	100% LOCAL	100% FED	100% LOCAL		
				URBAN	URBAN	URBAN	URBAN	URBAN	URBAN		
42300200	PORTLAND CEMENT CONCRETE DRIVEWAY PAVEMENT, 6 INCH	SO YD	89	7	82						
42400200	PORTLAND CEMENT CONCRETE SIDEWALK 5 INCH	SO FT	4,980	2,280	2,700						
42400800	DETECTABLE WARNINGS	SO FT	106	66	40						
44000100	PAVEMENT REMOVAL	SO YD	2,620	1,150	1,470						
44000200	DRIVEWAY PAVEMENT REMOVAL	SO YD	393	138	255						
44000500	COMBINATION CURB AND GUTTER REMOVAL	FOOT	411	136	275						
44000600	SIDEWALK REMOVAL	SO FT	1,198	323	875						
50100100	REMOVAL OF EXISTING STRUCTURES	EACH	1			1					
50105220	PIPE CULVERT REMOVAL	FOOT	127	89	38						
50200450	REMOVAL AND DISPOSAL OF UNSUITABLE MATERIAL FOR STRUCTURES	CU YD	93			93					
50300285	FORM LINER TEXTURED SURFACE	SO FT	810			810					
50800205	REINFORCEMENT BARS, EPOXY COATED	POUND	57,950			57,950					
+ 50900805	PEDESTRIAN RAILING	FOOT	64			64					
+ 50901720	BICYCLE RAILING	FOOT	64	64							
+ 50901750	PARAPET RAILING	FOOT	47			47					

+ INDICATES SPECIALTY ITEM



USER NAME = jaeckd	DESIGNED -	REVISED - Δ 10/25/23
MODEL NAME = Default	DRAWN -	REVISED -
PLOT SCALE = 2,0000' / 1" =	CHECKED -	REVISED -
PLOT DATE = 10/27/2023	DATE -	REVISED -

STATE OF ILLINOIS
DEPARTMENT OF TRANSPORTATION

INDIAN BOUNDARY ROAD
SUMMARY OF QUANTITIES

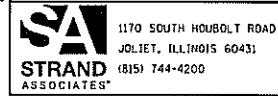
SCALE: SHEET 4 OF 9 SHEETS STA. TO STA.

TR RTE.	SECTION	COUNTY	TOTAL SHEETS	SHEET NO.
0052	17-00064-00-BR	WILL	89	7
CONTRACT NO. 61H25			ILLINOIS FED. AID PROJECT	

CODE NO.	ITEM	UNIT	TOTAL QUANTITY	ROADWAY 0004		CULVERT REPLACEMENT S.N. 099-6757 0010		STREET LIGHTING 0021		TRAINEES 0042	
				100% FED	100% LOCAL	100% FED	100% LOCAL	100% FED	100% LOCAL	100% FED	100% LOCAL
				URBAN	URBAN	URBAN	URBAN	URBAN	URBAN	URBAN	URBAN
X0326671	CONCRETE SURFACE COLOR TREATMENT	SO FT	810			810					
X0327301	RELOCATE EXISTING MAILBOX	EACH	2		2						
X0350805	FOLD DOWN BOLLARDS	EACH			1						
X0900064	MEMBRANE WATERPROOFING SYSTEM FOR BURIED STRUCTURES	SO YD	180			180					
+ X1200130	GATE VALVE 12" WITH VAULT, 5' DIAMETER	EACH	3	1	2						
+ X2511630	EROSION CONTROL BLANKET (SPECIAL)	SO YD	6,120	3,995	2,125						
X4021000	TEMPORARY ACCESS (PRIVATE ENTRANCE)	EACH	5	1	4						
X4022000	TEMPORARY ACCESS (COMMERCIAL ENTRANCE)	EACH	1		1						
X4023000	TEMPORARY ACCESS (ROAD)	EACH	3	1	2						
X4024100	TEMPORARY ACCESS (WINTERIZE)	SO YD	240	36	204						
+ X5630012	CUT AND CAP EXISTING 12" WATER MAIN	EACH	2	1	1						
+ X5630712	CONNECTION TO EXISTING WATER MAIN 12"	EACH	2	1	1						
X7010216	TRAFFIC CONTROL AND PROTECTION, (SPECIAL)	L SUM	1	1							
+ XX006834	ELECTRICAL CONNECTION TO EXISTING LIGHTING SYSTEM	EACH	1					1			
+ XX007795	REINFORCED CONCRETE LIGHT POLE, SPECIAL	EACH	9					9			
+ XX009302	LUMINAIRE, LED, HORIZONTAL MOUNT, LOW WATTAGE	EACH	9					9			

+ INDICATES SPECIALTY ITEM

FILE NAME = S:\JDL\3780-3799\3786\3786\Drawings\CAD\Access\CAD Sheets\0112345-sh-500.dgn



1170 SOUTH HOUBOLT ROAD
JOLIET, ILLINOIS 60431
(815) 744-4200

USER NAME = jockd
MODEL NAME = Default
PLOT SCALE = 2.0000" = 1"
PLOT DATE = 10/27/2023

DESIGNED -
DRAWN -
CHECKED -
DATE -

REVISED - 10/25/23
REVISED -
REVISED -
REVISED -

STATE OF ILLINOIS
DEPARTMENT OF TRANSPORTATION

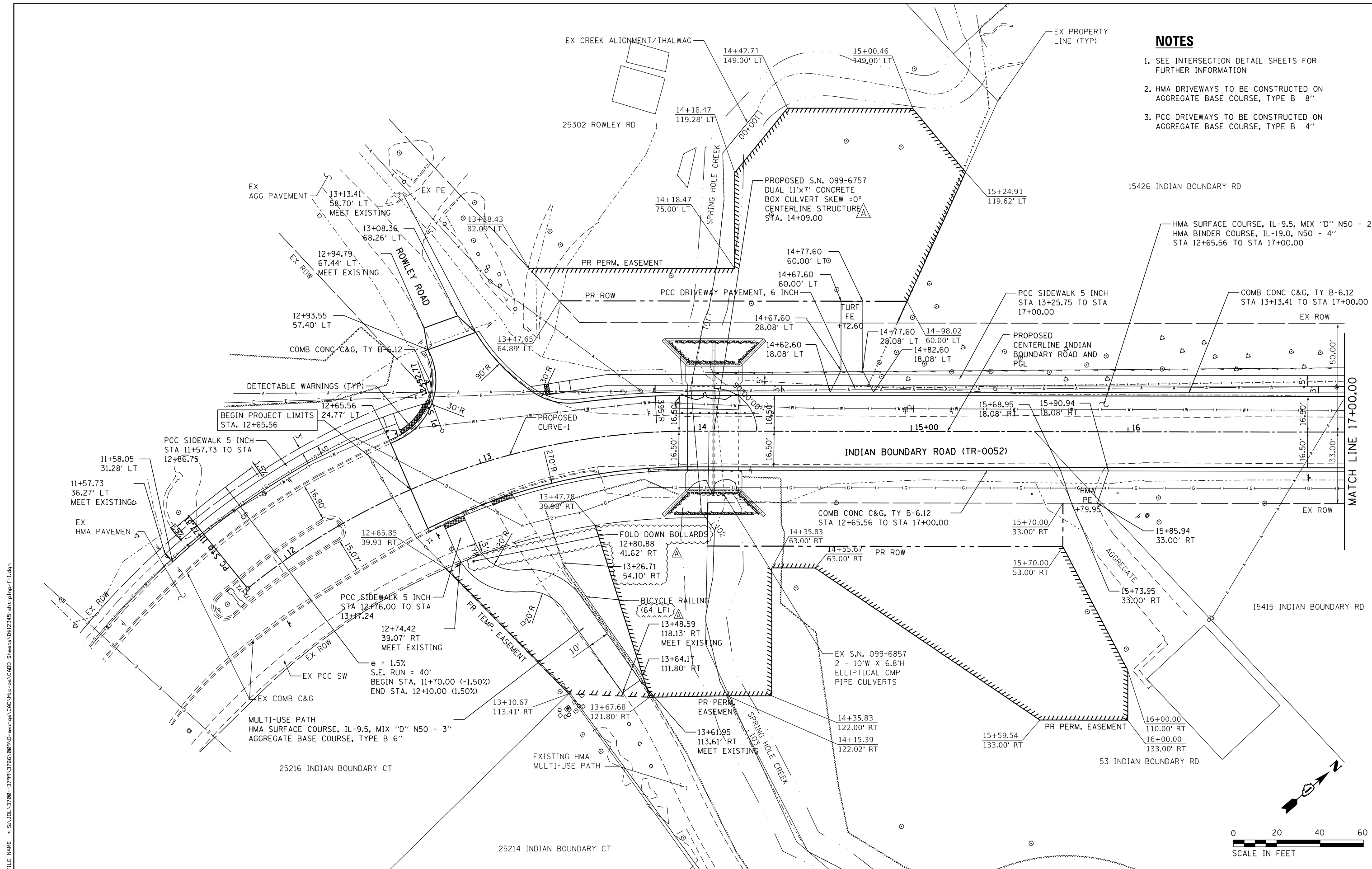
INDIAN BOUNDARY ROAD
SUMMARY OF QUANTITIES

TR. RTE.	SECTION	COUNTY	TOTAL SHEETS	SHEET NO.
0052	17-00064-00-BR	WILL	89	11
CONTRACT NO. 61H25			ILLINOIS FED. AID PROJECT	

SCALE: SHEET 8 OF 9 SHEETS STA. TO STA.

NOTES

1. SEE INTERSECTION DETAIL SHEETS FOR FURTHER INFORMATION
2. HMA DRIVEWAYS TO BE CONSTRUCTED ON AGGREGATE BASE COURSE, TYPE B 8"
3. PCC DRIVEWAYS TO BE CONSTRUCTED ON AGGREGATE BASE COURSE, TYPE B 4"



FILE NAME = SA:\JLI_137200-3799\37665-009\Drwg\Road\Micro\CA00_Sheets\0812345-shr-pln\pfr-f-1.dgn

SA STRAND ASSOCIATES
 1170 SOUTH HOUBOLT ROAD
 JOLIET, ILLINOIS 60431
 (815) 744-4200

USER NAME = jackd	DESIGNED -	REVISED -
MODEL NAME = Default	DRAWN -	REVISED -
PLOT SCALE = 48.0000' / in.	CHECKED -	REVISED -
PLOT DATE = 10/27/2023	DATE -	REVISED -

**STATE OF ILLINOIS
 DEPARTMENT OF TRANSPORTATION**

**INDIAN BOUNDARY ROAD
 ROADWAY PLAN**

SCALE: 1"=20' SHEET 1 OF 2 SHEETS STA. 11+50.00 TO STA. 17+00.00

TR. RTE.	SECTION	COUNTY	TOTAL SHEETS	SHEET NO.
0052	17-00064-00-BR	WILL	89	21
CONTRACT NO. 61H25				
ILLINOIS FED. AID PROJECT				