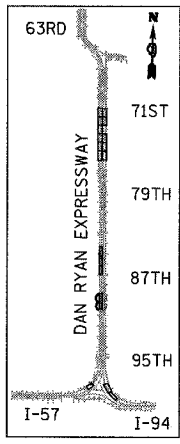
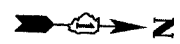
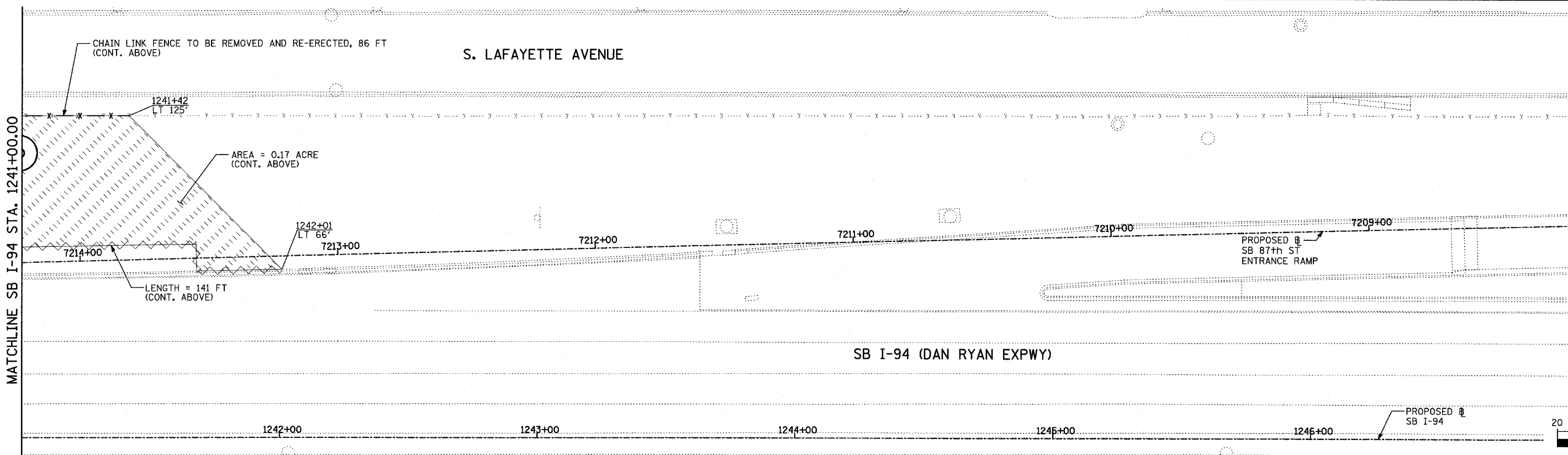
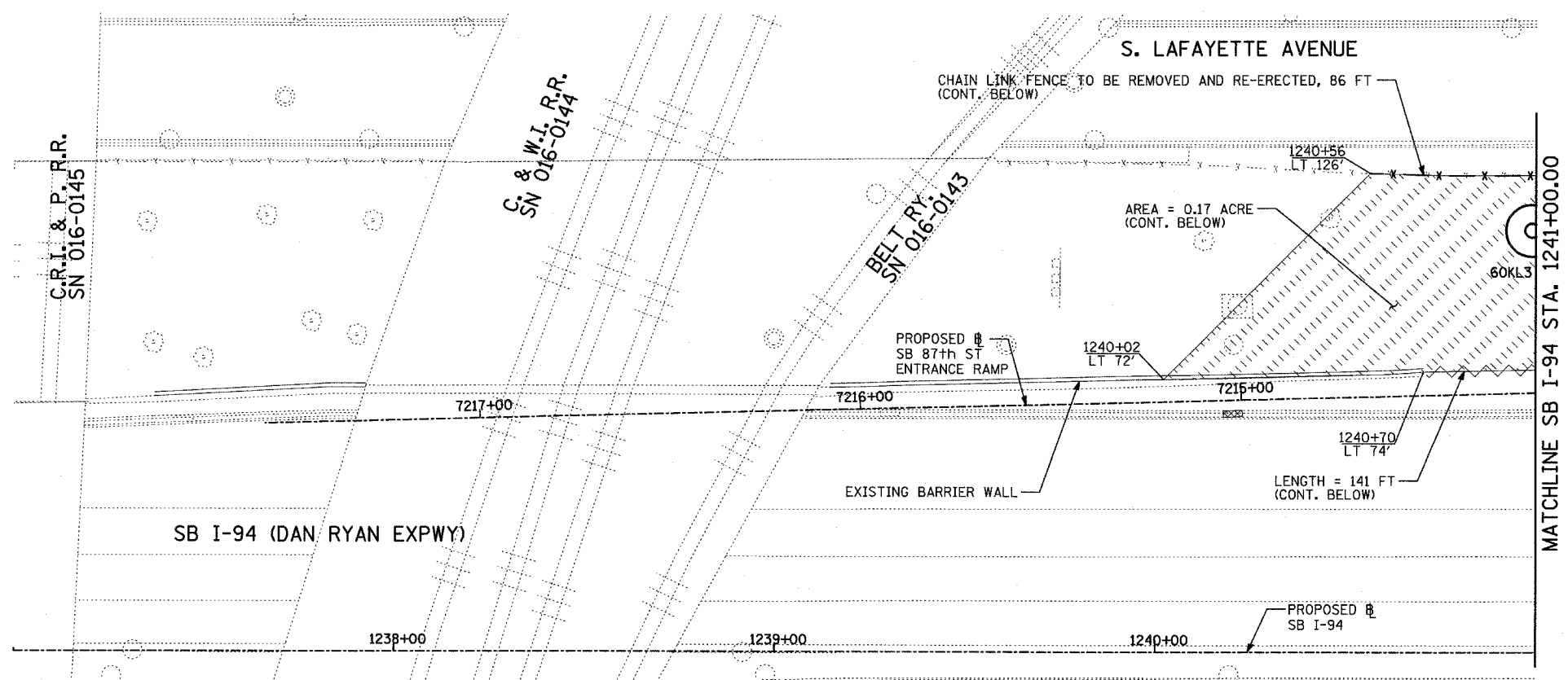
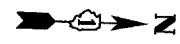
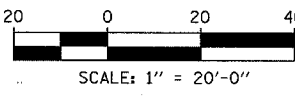


| F.A.I. RTE.                        | SECTION    | COUNTY                    | TOTAL SHEETS | SHEET NO. |
|------------------------------------|------------|---------------------------|--------------|-----------|
| 94                                 | 2005-037 L | COOK                      | 45           | 12        |
| STA. 2021+00.00 TO STA. 2365+00.00 |            |                           |              |           |
| FED. ROAD DIST. NO.                |            | ILLINOIS FED. AID PROJECT |              |           |

#60A08



LOCATION MAP



**NOTES:**

1. ALL HIGH MAST LIGHT TOWER SERVICE PADS MUST BE CONSTRUCTED AFTER THE ADJACENT RAMP IN CONTRACTS \*62694 & \*62695 IS OPENED.
2. FINAL TURF RESTORATION WILL BE PROVIDED BY CONTRACTS \*62593 & \*62304.
3. PLAN REFLECTS CONTRACTS \*62694 & \*62695 AS EXISTING CONDITIONS.

**LEGEND:**

- TEMPORARY EROSION CONTROL SEEDING (100 LBS PER ACRE)
- PERIMETER EROSION BARRIER
- INLET FILTER, TO BE INSTALLED IN OFF PROJECT DRAINAGE STRUCTURES ACCEPTING STORMWATER RUNOFF

| REVISIONS |      |
|-----------|------|
| NAME      | DATE |
|           |      |
|           |      |
|           |      |
|           |      |
|           |      |
|           |      |
|           |      |
|           |      |

ILLINOIS DEPARTMENT OF TRANSPORTATION  
 F.A.I. 94 (DAN RYAN EXPRESSWAY)  
 I-57 TO 71ST STREET  
 EROSION CONTROL PLAN  
 SB 87th STREET ENTRANCE RAMP  
 SB I-94 STA. 1237+00.00 TO 1247+00.00  
 60KL3

SCALE: 1"=20'  
 DATE: AUGUST 19, 2005

DRAWN BY: RTM  
 CHECKED BY: TGB

**TYLIN** INTERNATIONAL