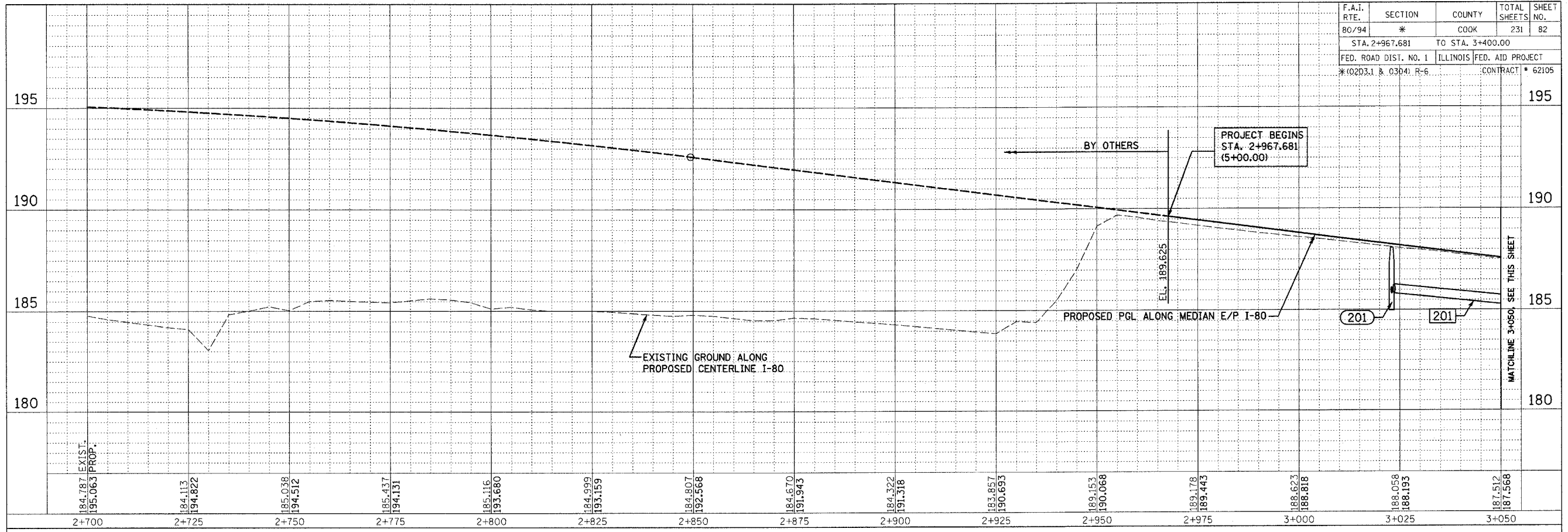
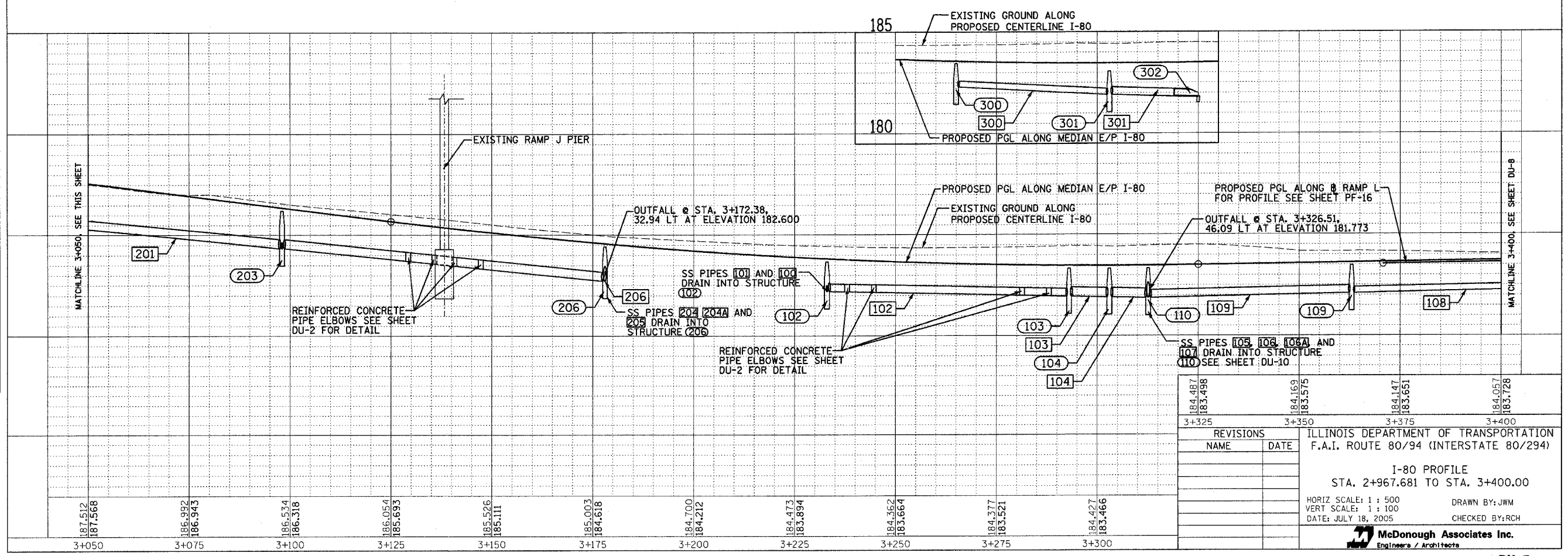


F.A.I. RTE.	SECTION	COUNTY	TOTAL SHEETS	SHEET NO.
80/94	*	COOK	231	82
STA. 2+967.681		TO STA. 3+400.00		
FED. ROAD DIST. NO. 1		ILLINOIS	FED. AID PROJECT	
*10203.1 & 03041 R-6		CONTRACT # 62105		

FINAL SURVEY PLOTTED	BY	DATE
NOTE BOOK TEMPLATE		
AREAS CHECKED		
NO.		



ORIGINAL SURVEY PLOTTED	BY	DATE
NOTE BOOK TEMPLATE		
AREAS CHECKED		
NO.		



184.487	184.169	184.147	184.057
183.498	183.575	183.651	183.728
3+325	3+350	3+375	3+400
REVISIONS			
NAME	DATE		
ILLINOIS DEPARTMENT OF TRANSPORTATION			
F.A.I. ROUTE 80/94 (INTERSTATE 80/294)			
I-80 PROFILE			
STA. 2+967.681 TO STA. 3+400.00			
HORIZ SCALE: 1 : 500		DRAWN BY: JWM	
VERT SCALE: 1 : 100		DATE: JULY 18, 2005	
		CHECKED BY: RCH	
 McDonough Associates Inc. Engineers / Architects			