

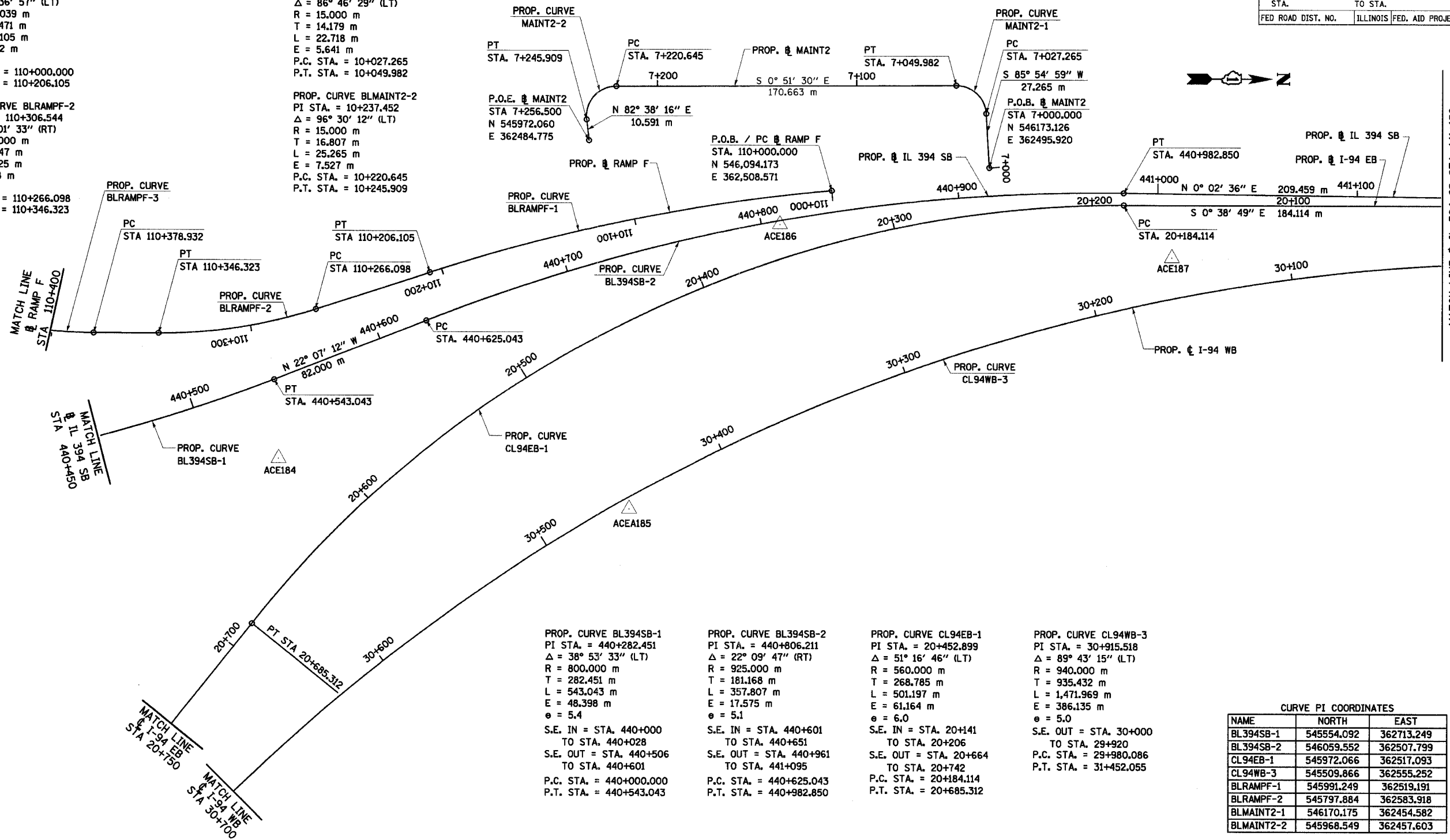
F.A.I. RTE	SECTION	COUNTY	TOTAL SHEETS	SHEET NO.
80/94	*	COOK	870	56
STA.		TO STA.		
FED ROAD DIST. NO.		ILLINOIS FED. AID PROJECT		

PROP. CURVE BLRAMPF-1  
 PI STA = 110+103.471  
 $\Delta = 12^\circ 36' 57''$  (LT)  
 R = 936.039 m  
 T = 103.471 m  
 L = 206.105 m  
 E = 5.702 m  
 $e = 3.7$   
 P.C. STA = 110+000.000  
 P.T. STA = 110+206.105

PROP. CURVE BLRAMPF-2  
 PI STA = 110+306.544  
 $\Delta = 18^\circ 01' 33''$  (RT)  
 R = 255.000 m  
 T = 40.447 m  
 L = 80.225 m  
 E = 3.188 m  
 $e = 6.0$   
 P.C. STA = 110+266.098  
 P.T. STA = 110+346.323

PROP. CURVE BLMAINT2-1  
 PI STA = 10+041.443  
 $\Delta = 86^\circ 46' 29''$  (LT)  
 R = 15.000 m  
 T = 14.179 m  
 L = 22.718 m  
 E = 5.641 m  
 P.C. STA = 10+027.265  
 P.T. STA = 10+049.982

PROP. CURVE BLMAINT2-2  
 PI STA = 10+237.452  
 $\Delta = 96^\circ 30' 12''$  (LT)  
 R = 15.000 m  
 T = 16.807 m  
 L = 25.265 m  
 E = 7.527 m  
 P.C. STA = 10+220.645  
 P.T. STA = 10+245.909



PROP. CURVE BL394SB-1  
 PI STA = 440+282.451  
 $\Delta = 38^\circ 53' 33''$  (LT)  
 R = 800.000 m  
 T = 282.451 m  
 L = 543.043 m  
 E = 48.398 m  
 $e = 5.4$   
 S.E. IN = STA. 440+000  
 TO STA. 440+028  
 S.E. OUT = STA. 440+506  
 TO STA. 440+601  
 P.C. STA = 440+000.000  
 P.T. STA = 440+543.043

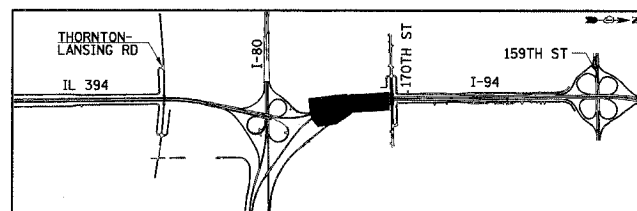
PROP. CURVE BL394SB-2  
 PI STA = 440+806.211  
 $\Delta = 22^\circ 09' 47''$  (RT)  
 R = 925.000 m  
 T = 181.168 m  
 L = 357.807 m  
 E = 17.575 m  
 $e = 5.1$   
 S.E. IN = STA. 440+601  
 TO STA. 440+651  
 S.E. OUT = STA. 440+961  
 TO STA. 441+095  
 P.C. STA = 440+625.043  
 P.T. STA = 440+982.850

PROP. CURVE CL94EB-1  
 PI STA = 20+452.899  
 $\Delta = 51^\circ 16' 46''$  (LT)  
 R = 560.000 m  
 T = 268.785 m  
 L = 501.197 m  
 E = 61.164 m  
 $e = 6.0$   
 S.E. IN = STA. 20+141  
 TO STA. 20+206  
 S.E. OUT = STA. 20+664  
 TO STA. 20+742  
 P.C. STA = 20+184.114  
 P.T. STA = 20+685.312

PROP. CURVE CL94WB-3  
 PI STA = 30+915.518  
 $\Delta = 89^\circ 43' 15''$  (LT)  
 R = 940.000 m  
 T = 935.432 m  
 L = 1,471.969 m  
 E = 386.135 m  
 $e = 5.0$   
 S.E. OUT = STA. 30+000  
 TO STA. 29+920  
 P.C. STA = 29+980.086  
 P.T. STA = 31+452.055

NAME	NORTH	EAST
BL394SB-1	545554.092	362713.249
BL394SB-2	546059.552	362507.799
CL94EB-1	545972.066	362517.093
CL94WB-3	545509.866	362555.252
BLRAMPF-1	545991.249	362519.191
BLRAMPF-2	545797.884	362583.918
BLMAINT2-1	546170.175	362454.582
BLMAINT2-2	545968.549	362457.603

NOTE:  
 COORDINATE DATA IS STATE PLANE



NAME	DATE

ILLINOIS DEPARTMENT OF TRANSPORTATION  
 I-94 EAST BOUND / IL 394 SOUTH BOUND

HORIZONTAL ALIGNMENT

HORIZ SCALE: 1:1000  
 VERT SCALE: NONE  
 DATE: JULY 18, 2005

DRAWN BY: BAJ  
 CHECKED BY: JES

