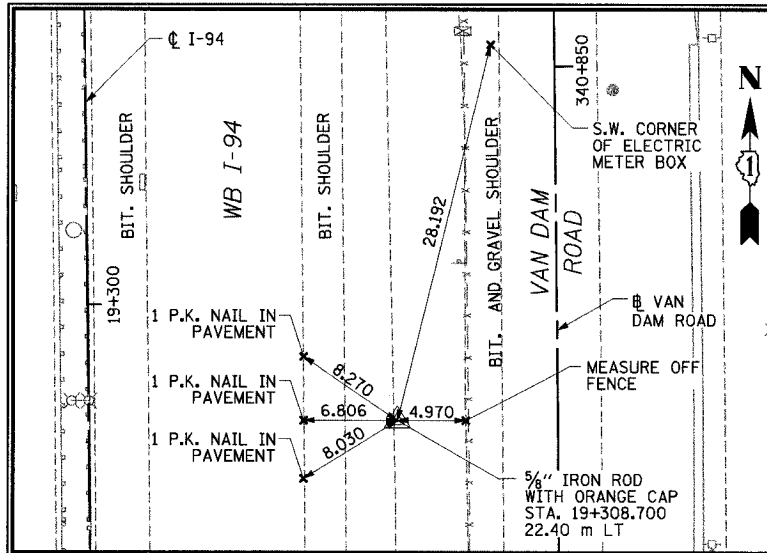
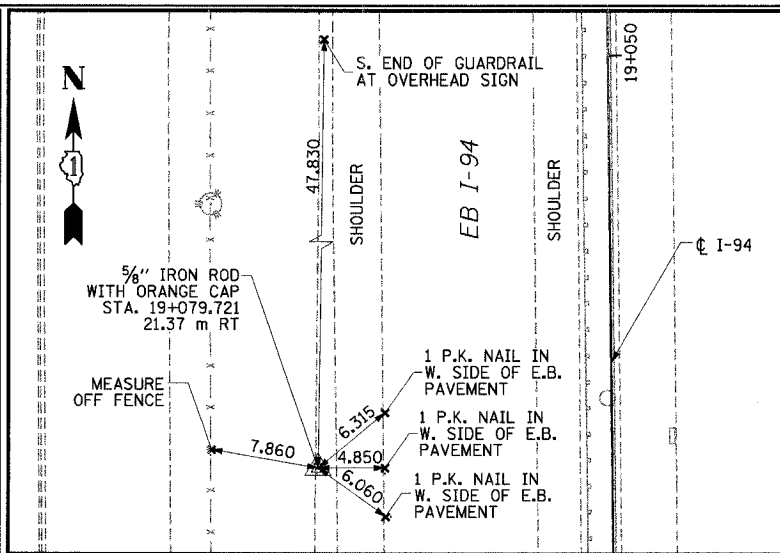


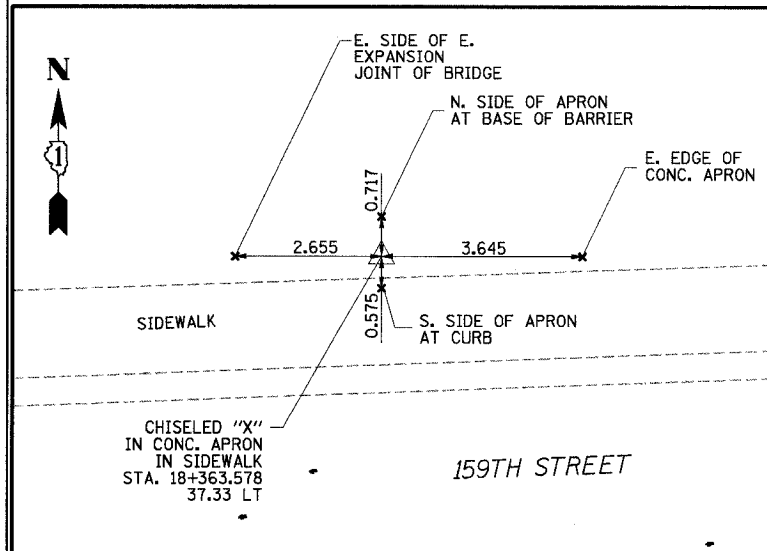
F.A.I. RTE	SECTION	COUNTY	TOTAL SHEETS NO.	SHEET NO.
80/94		COOK	870	73
STA.		TO STA.		
FED ROAD DIST. NO.		ILLINOIS FED. AID PROJECT		



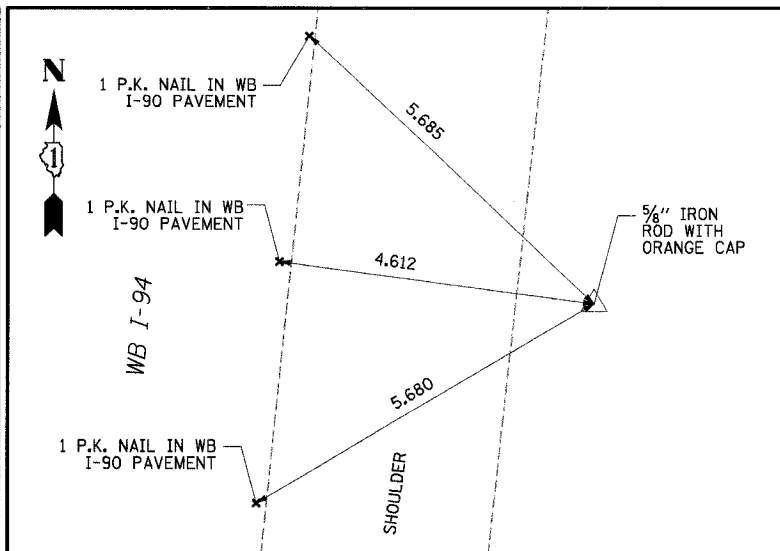
ACE #193 NORTHING: 547116.551 EASTING: 362534.036 ELEVATION = 182.955



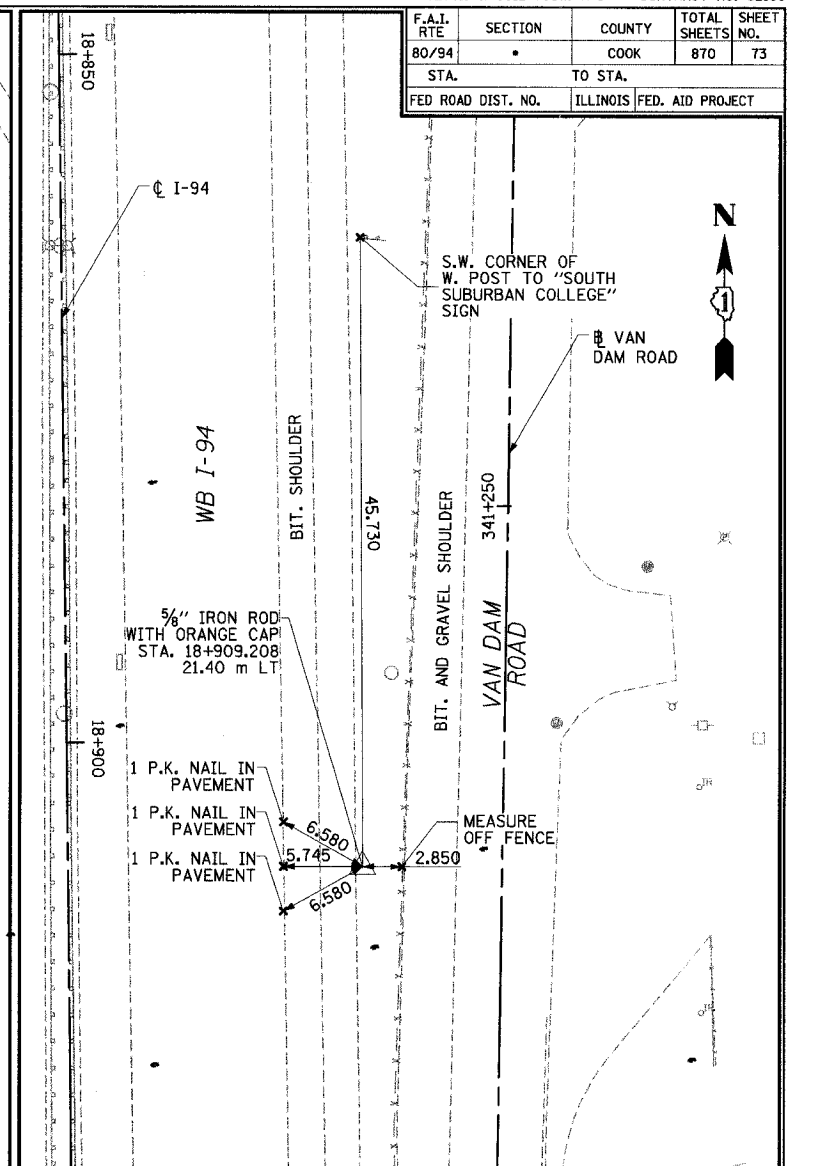
ACE #194 NORTHING: 547344.978 EASTING: 362487.477 ELEVATION = 182.607



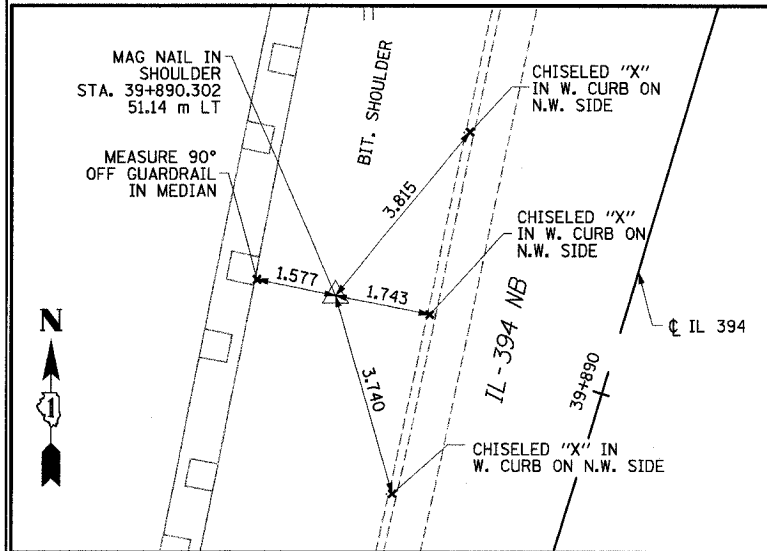
ACE #198 NORTHING: 548061.796 EASTING: 362537.702 ELEVATION = 187.347



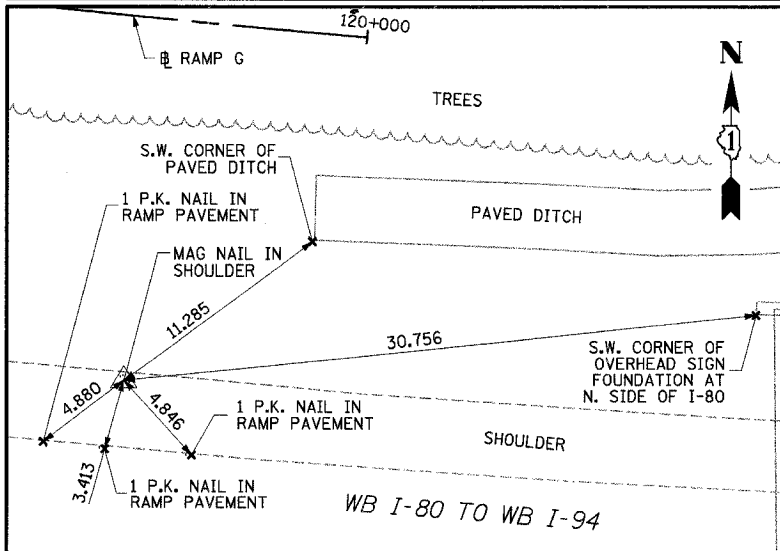
ACE #200 NORTHING: 548251.634 EASTING: 362527.074 ELEVATION = 182.193



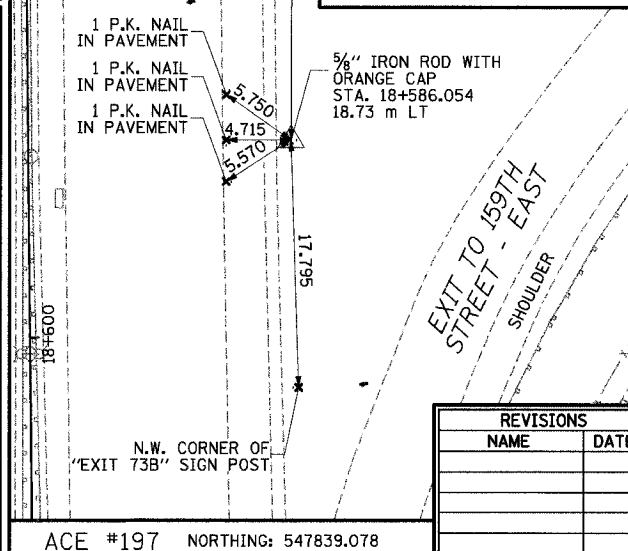
ACE #195 NORTHING: 547515.999 EASTING: 362528.164 ELEVATION = 182.118



ACE #336 NORTHING: 545178.932 EASTING: 362599.066 ELEVATION = 196.004



ACE #337 NORTHING: 545506.297 EASTING: 363334.302 ELEVATION = 182.642



ACE #197 NORTHING: 547839.078 EASTING: 362521.624 ELEVATION = 182.297

- NOTES:
1. ALL MEASUREMENTS ARE IN METERS (m) UNLESS OTHERWISE NOTED.
 2. ILLINOIS EAST ZONE STATE PLANE COORDINATES (NAD 83, 1986 ADJUSTMENT) ELEVATIONS (NAVD 88)

ILLINOIS DEPARTMENT OF TRANSPORTATION
I-94 EAST BOUND / IL 394 SOUTH BOUND

TIES

HORIZ SCALE: N.T.S.
VERT SCALE: N.T.S.
DATE: JULY 18, 2005
DRAWN BY: JYMC
CHECKED BY: JES

HNTB