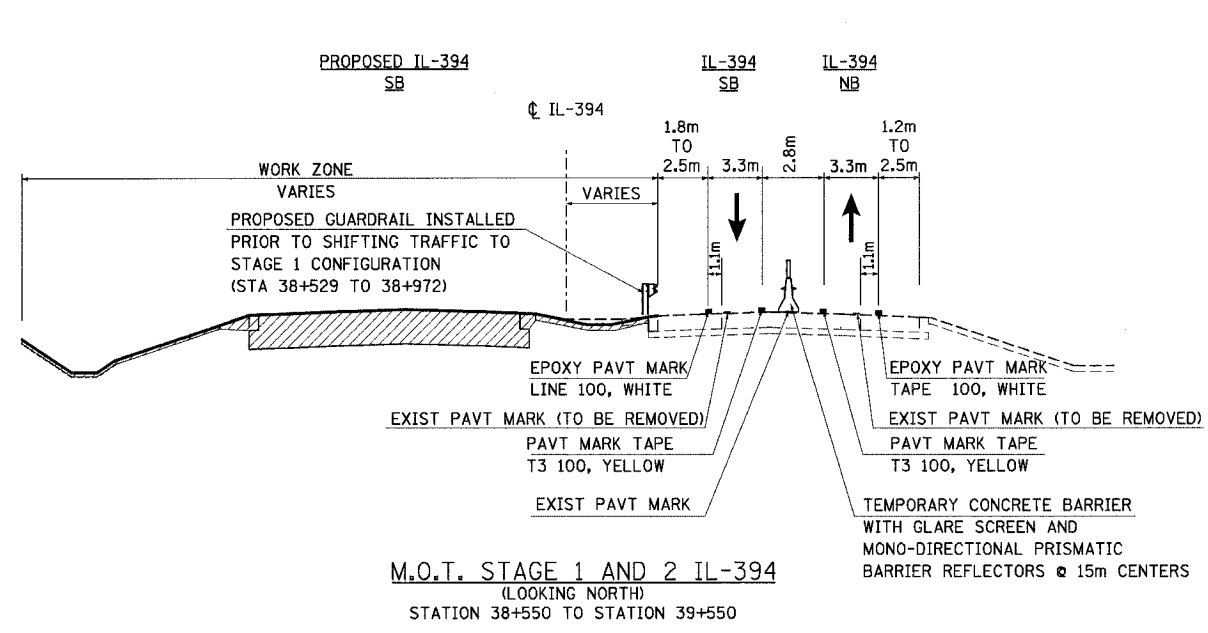
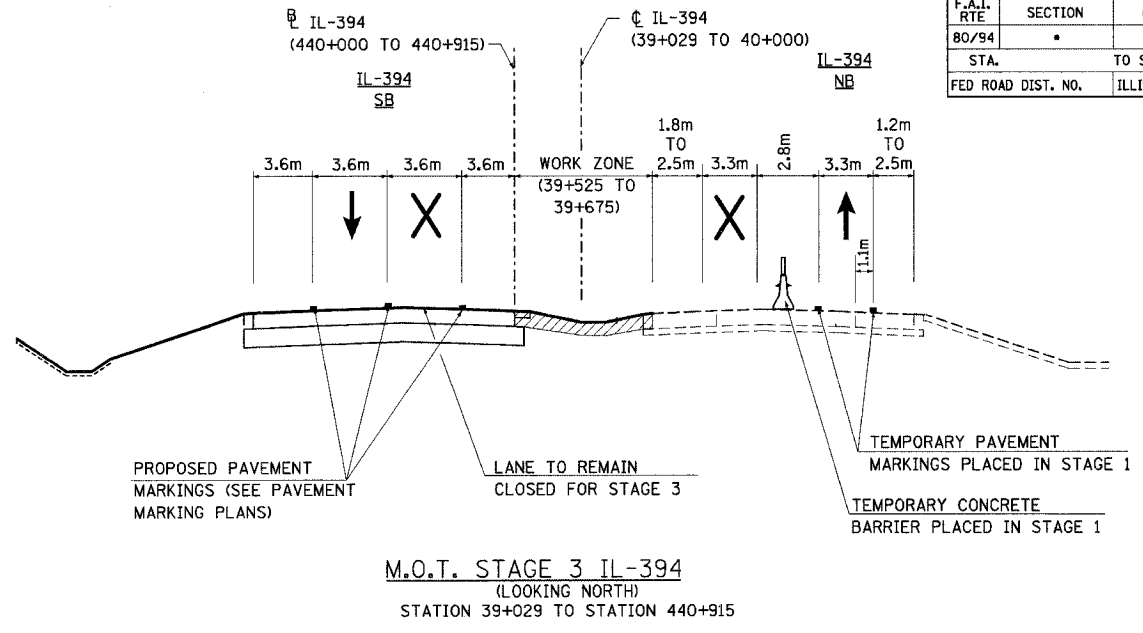


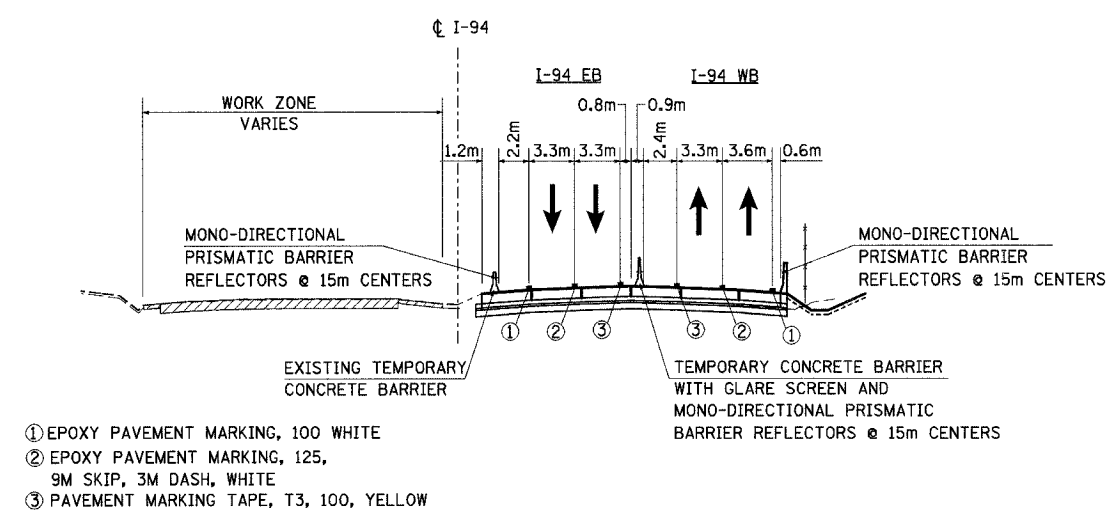
F.A.I. RTE	SECTION	COUNTY	TOTAL SHEETS	SHEET NO.
80/94	*	COOK	870	80
STA. TO STA.		FED. ROAD DIST. NO. ILLINOIS FED. AID PROJECT		



M.O.T. STAGE 1 AND 2 IL-394
(LOOKING NORTH)
STATION 38+550 TO STATION 39+550

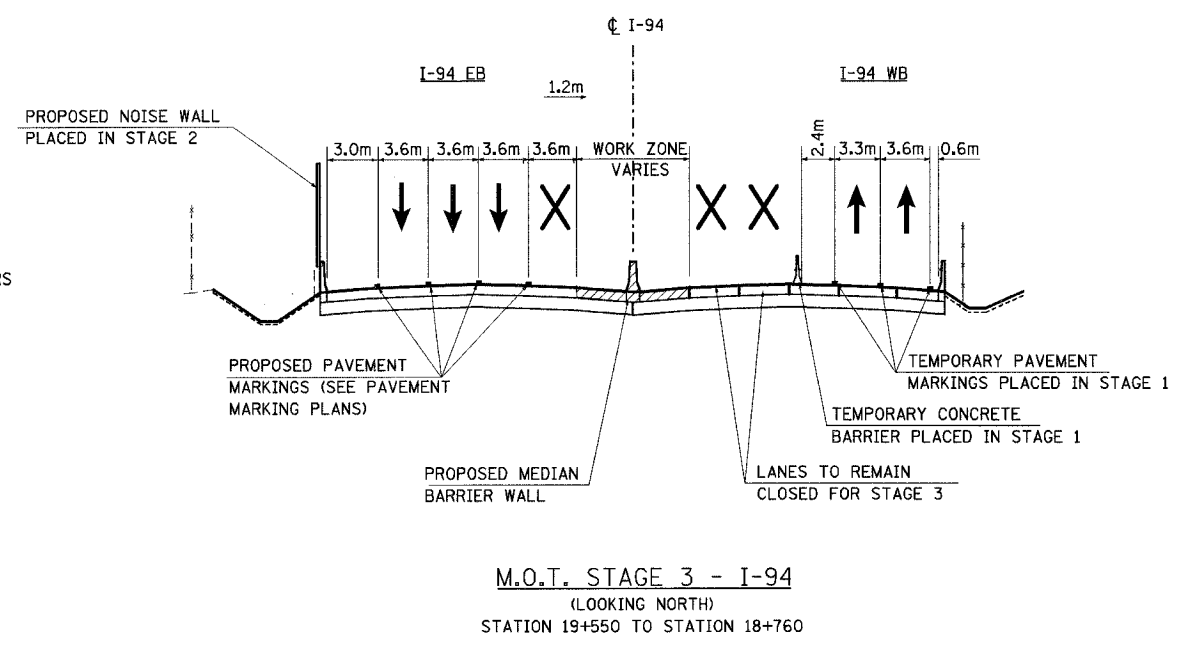


M.O.T. STAGE 3 IL-394
(LOOKING NORTH)
STATION 39+029 TO STATION 440+915



M.O.T. STAGE 1 AND 2 - I-94
(LOOKING NORTH)
STATION 19+550 TO STATION 18+760

- ① EPOXY PAVEMENT MARKING, 100 WHITE
- ② EPOXY PAVEMENT MARKING, 125, 9M SKIP, 3M DASH, WHITE
- ③ PAVEMENT MARKING TAPE, T3, 100, YELLOW



M.O.T. STAGE 3 - I-94
(LOOKING NORTH)
STATION 19+550 TO STATION 18+760

MT-6

ILLINOIS DEPARTMENT OF TRANSPORTATION
I-94 EAST BOUND / IL 394 SOUTH BOUND

MAINTENANCE OF TRAFFIC
I-94 AND IL-394
TYPICAL SECTIONS

HORIZ SCALE: N.T.S.
VERT SCALE: N.T.S.
DATE: JULY 18, 2005
DRAWN BY: STS
CHECKED BY: JES

REVISIONS	
NAME	DATE

HNTB