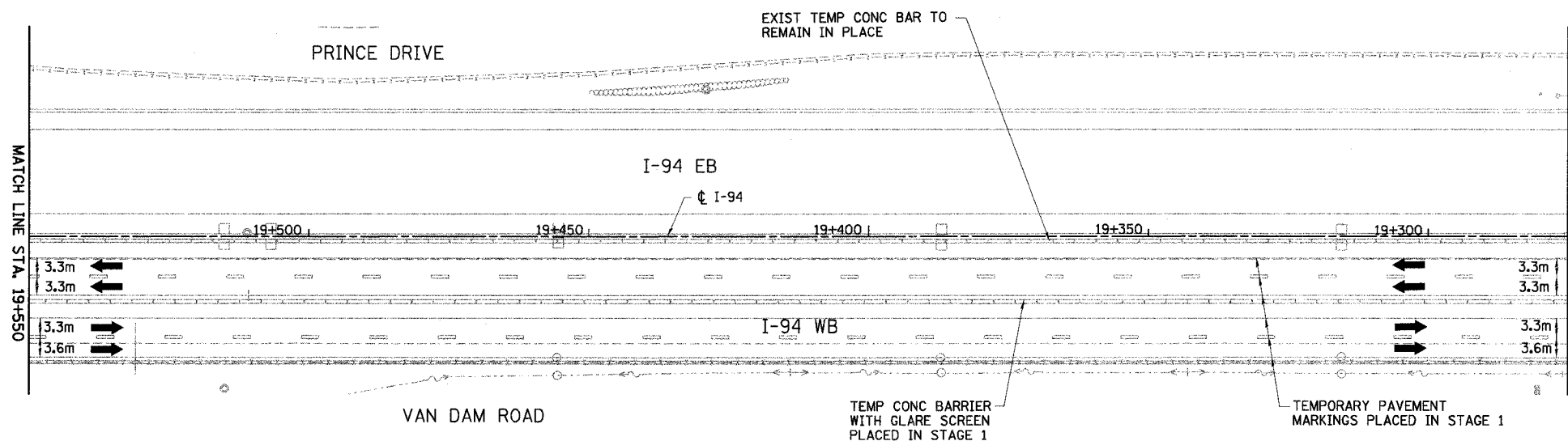
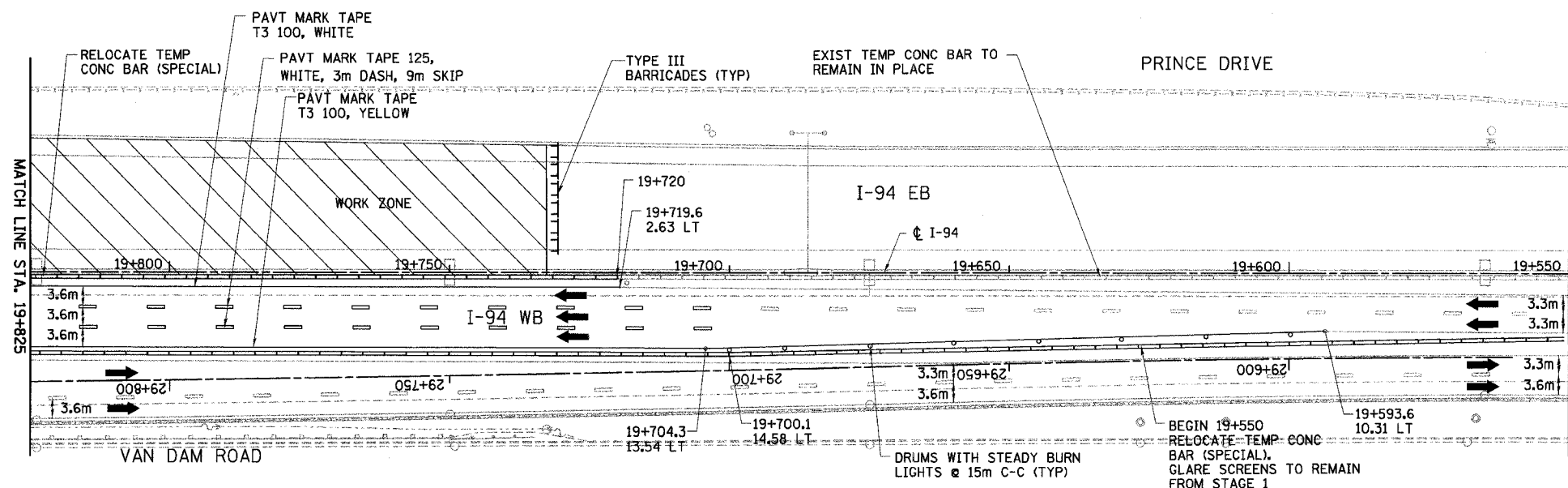


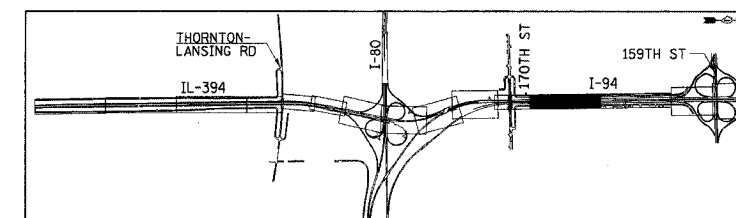
F.A.I. RTE	SECTION	COUNTY	TOTAL SHEETS	SHEET NO.
80/94		COOK	870	101
STA. 19+275		TO STA. 19+825		
FED ROAD DIST. NO.		ILLINOIS FED. AID PROJECT		



NOTE:
 AVAILABLE EXISTING TEMPORARY CONCRETE BARRIER SHALL BE USED FOR THE STAGE CONFIGURATION SHOWN AND PAID FOR AS RELOCATE TEMPORARY CONCRETE BARRIER (SPECIAL) (M704002). ALL SURPLUS TEMPORARY CONCRETE BARRIER NOT NEEDED FOR THIS STAGE OR FUTURE STAGES SHALL BE REMOVED AND PAID FOR AS REMOVE TEMPORARY CONCRETE BARRIER (MX704200). (SEE DWG. MT-2 FOR TEMPORARY CONCRETE BARRIER SCHEDULE)

LEGEND

- WORK ZONE
- TEMPORARY PAVEMENT
- TRAFFIC DIRECTION
- LANE CLOSURE
- DRUMS WITH STEADY BURN LIGHTS
- VERTICAL PANELS
- TYPE III BARRICADE WITH 2 FLASHING LIGHTS



REVISIONS	
NAME	DATE

MT-27
 ILLINOIS DEPARTMENT OF TRANSPORTATION
 I-94 EAST BOUND / IL 394 SOUTH BOUND

MAINTENANCE OF TRAFFIC
 I-94 - STAGE 2
 STA. 19+275 TO STA. 19+825

HORIZ SCALE: 1:500
 VERT SCALE: NONE
 DATE: JULY 18, 2005
 DRAWN BY: STS
 CHECKED BY: JES

