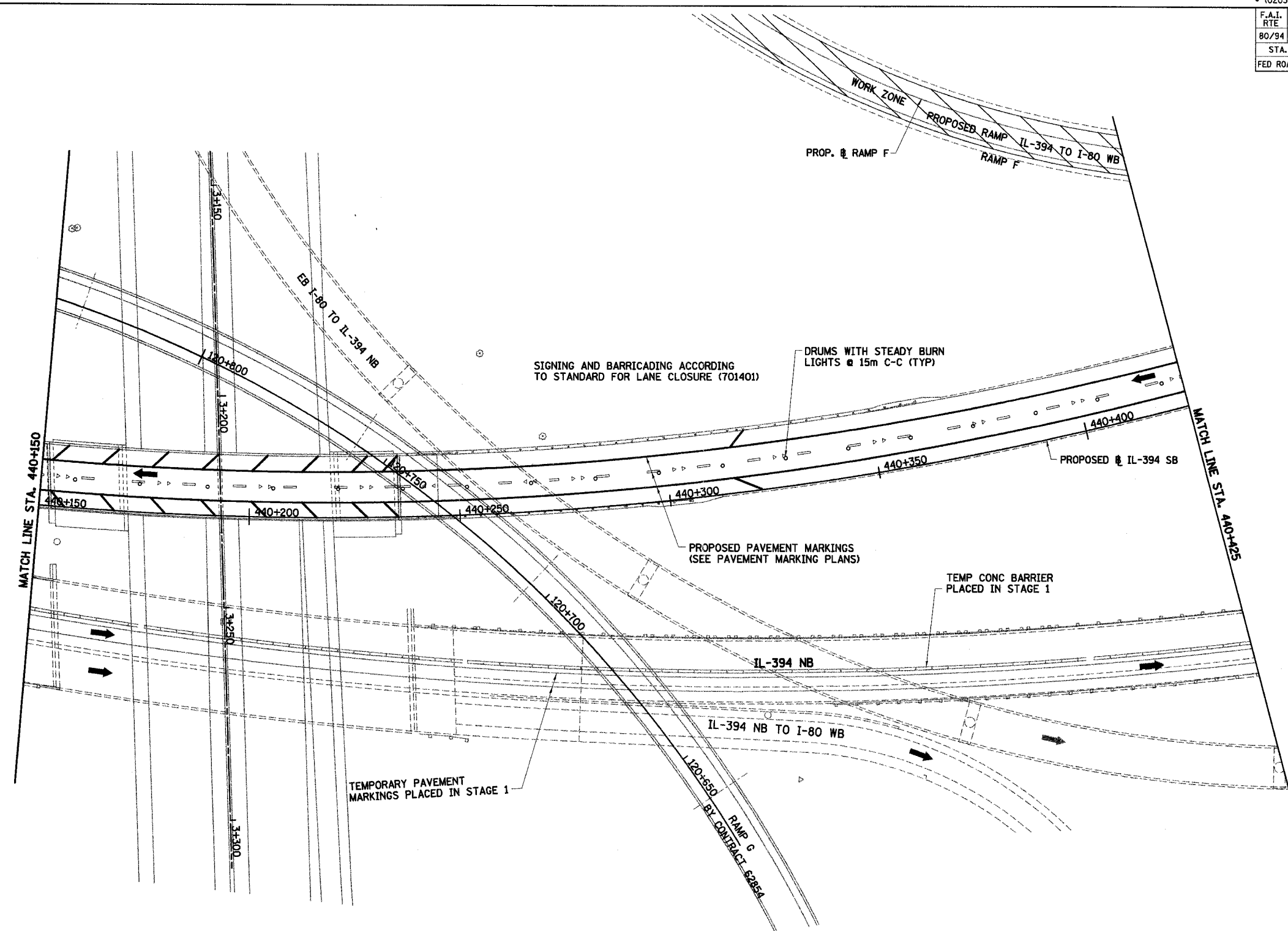
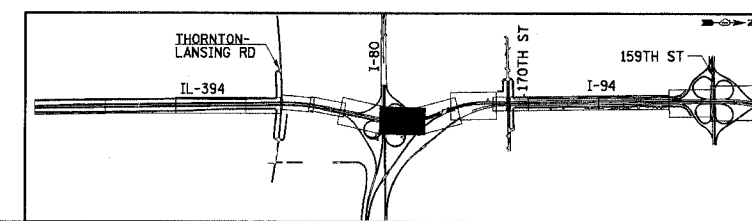


F.A.I. RTE	SECTION	COUNTY	TOTAL SHEETS	SHEET NO.
80/94	.	COOK	870	110
STA. 40+150		TO STA. 40+450		
FED ROAD DIST. NO.		ILLINOIS FED. AID PROJECT		



LEGEND

	WORK ZONE		DRUMS WITH STEADY BURN LIGHTS
	TEMPORARY PAVEMENT		VERTICAL PANELS
	TRAFFIC DIRECTION		TYPE III BARRICADE WITH 2 FLASHING LIGHTS
	LANE CLOSURE		



REVISIONS	
NAME	DATE

MT-36
 ILLINOIS DEPARTMENT OF TRANSPORTATION
 I-94 EAST BOUND / IL 394 SOUTH BOUND
MAINTENANCE OF TRAFFIC
 IL-394 - STAGE 3
 STA. 440+150 TO STA. 440+425
 HORIZ SCALE: 1:500
 VERT SCALE: NONE
 DATE: JULY 18, 2005
 DRAWN BY: STS
 CHECKED BY: JES

