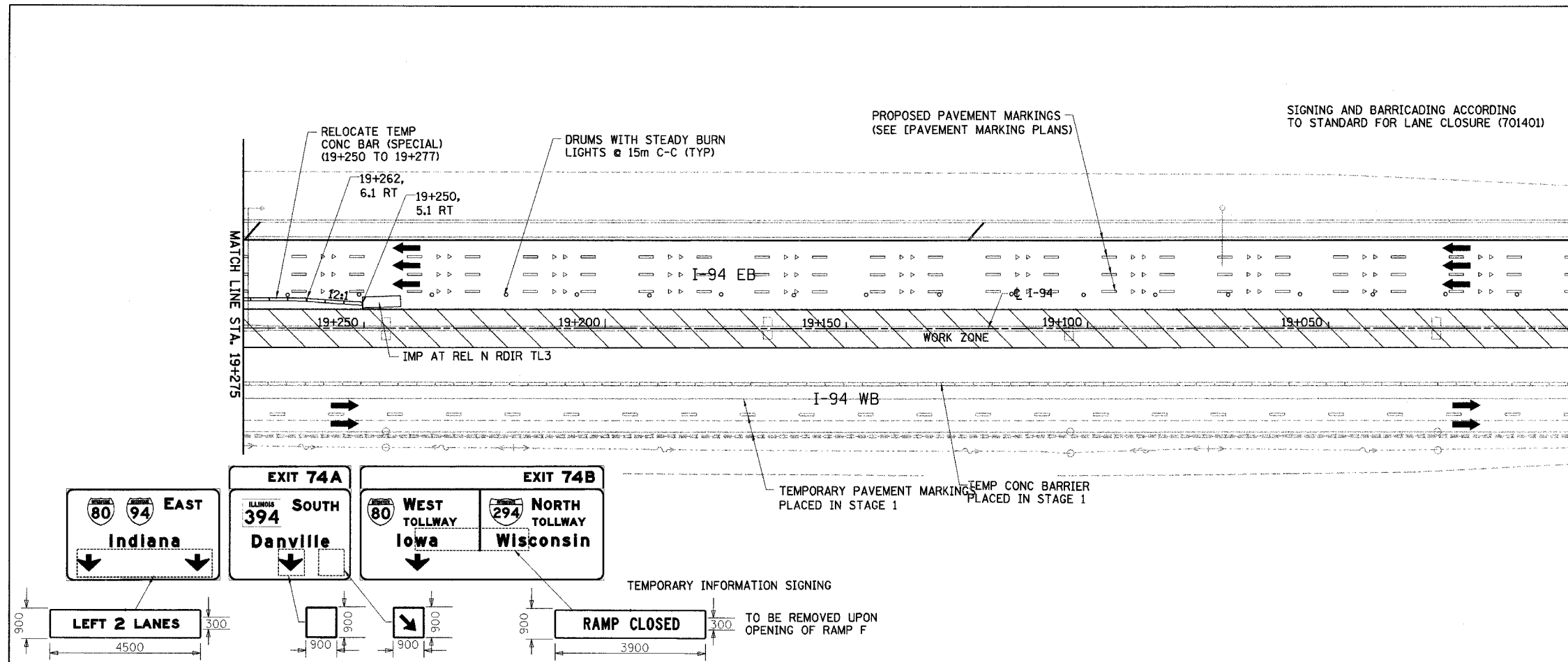
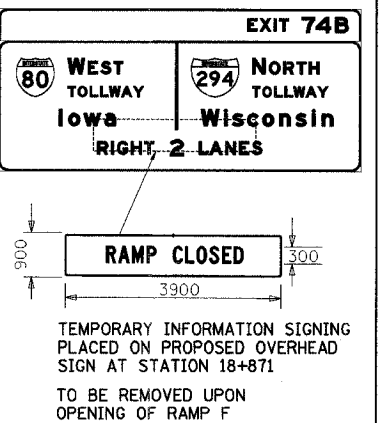
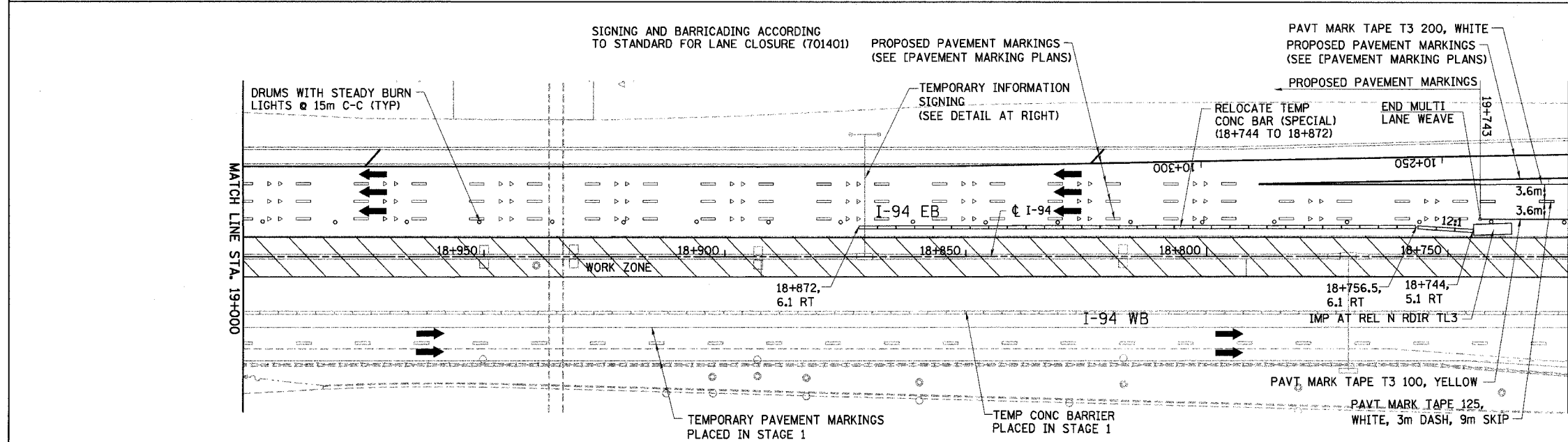


F.A.I. RTE	SECTION	COUNTY	TOTAL SHEETS	SHEET NO.
80/94	*	COOK	870	115
STA. 18+725		TO STA. 19+275		
FED ROAD DIST. NO.		ILLINOIS FED. AID PROJECT		

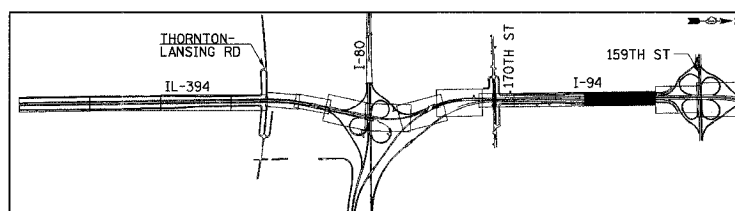


NOTE:  
 AVAILABLE EXISTING TEMPORARY CONCRETE BARRIER SHALL BE USED FOR THE STAGE CONFIGURATION SHOWN AND PAID FOR AS RELOCATE TEMPORARY CONCRETE BARRIER (SPECIAL) (M704002). ALL SURPLUS TEMPORARY CONCRETE BARRIER NOT NEEDED FOR THIS STAGE SHALL BE REMOVED AND PAID FOR AS REMOVE TEMPORARY CONCRETE BARRIER (MX704200). (SEE DWG. MT-2 FOR TEMPORARY CONCRETE BARRIER SCHEDULE)



LEGEND

	WORK ZONE		DRUMS WITH STEADY BURN LIGHTS
	TEMPORARY PAVEMENT		VERTICAL PANELS
	TRAFFIC DIRECTION		TYPE III BARRICADE WITH 2 FLASHING LIGHTS
	LANE CLOSURE		



REVISIONS	
NAME	DATE

MT-41

ILLINOIS DEPARTMENT OF TRANSPORTATION

I-94 EAST BOUND / IL 394 SOUTH BOUND

MAINTENANCE OF TRAFFIC

I-94 - STAGE 3

STA. 18+725 TO STA. 19+275

HORIZ SCALE: 1:500

VERT SCALE: NONE

DATE: JULY 18, 2005

DRAWN BY: STS

CHECKED BY: JES

**HNTB**