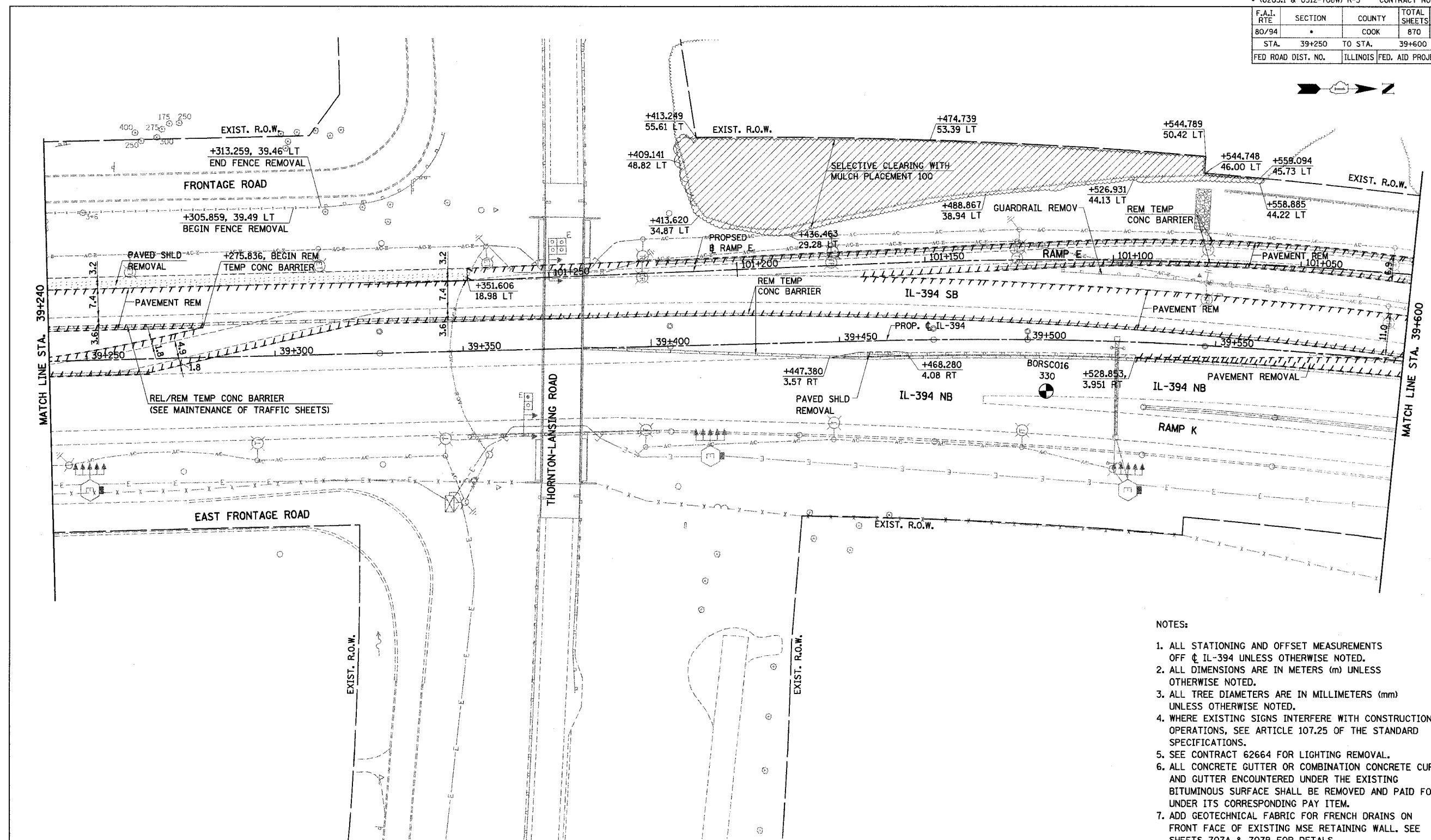


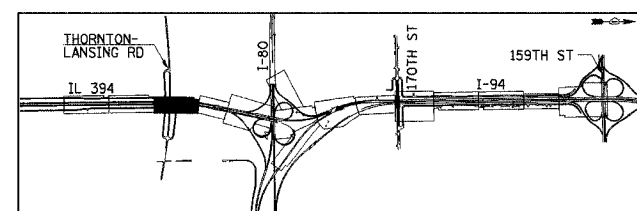
F.A.I. RTE	SECTION	COUNTY	TOTAL SHEETS	SHEET NO.
80/94	*	COOK	870	137
STA. 39+250		TO STA. 39+600		
FED ROAD DIST. NO.		ILLINOIS		FED. AID PROJECT



- NOTES:
1. ALL STATIONING AND OFFSET MEASUREMENTS OFF  $\phi$  IL-394 UNLESS OTHERWISE NOTED.
  2. ALL DIMENSIONS ARE IN METERS (m) UNLESS OTHERWISE NOTED.
  3. ALL TREE DIAMETERS ARE IN MILLIMETERS (mm) UNLESS OTHERWISE NOTED.
  4. WHERE EXISTING SIGNS INTERFERE WITH CONSTRUCTION OPERATIONS, SEE ARTICLE 107.25 OF THE STANDARD SPECIFICATIONS.
  5. SEE CONTRACT 62664 FOR LIGHTING REMOVAL.
  6. ALL CONCRETE GUTTER OR COMBINATION CONCRETE CURB AND GUTTER ENCOUNTERED UNDER THE EXISTING BITUMINOUS SURFACE SHALL BE REMOVED AND PAID FOR UNDER ITS CORRESPONDING PAY ITEM.
  7. ADD GEOTECHNICAL FABRIC FOR FRENCH DRAINS ON FRONT FACE OF EXISTING MSE RETAINING WALL. SEE SHEETS 707A & 707B FOR DETAILS.

LEGEND

	PAVEMENT REMOVAL		TREE REMOVAL
	PAVED SHOULDER REMOVAL		TREE REMOVAL HECTARES
	APPROACH SLAB REMOVAL		SELECTIVE CLEARING
	PAVEMENT BREAKING	BORXXXXX	SOIL BORING / PAVEMENT CORE NUMBER
	UMINOUS SURFACE REMOVAL, 45MM	XXX	ASPHALT PAVEMENT THICKNESS (MM) UNLESS OTHERWISE NOTED
			BORING / CORE



REVISIONS	
NAME	DATE

ILLINOIS DEPARTMENT OF TRANSPORTATION  
I-94 EAST BOUND / IL 394 SOUTH BOUND

**EXISTING PLAN**  
IL-394  
STA. 39+240 TO STA. 39+600

HORIZ SCALE: 1:500  
VERT SCALE: 1:10  
DATE: JULY 18, 2005

DRAWN BY: BAJ  
CHECKED BY: JES

**HNTB**

EXISTING