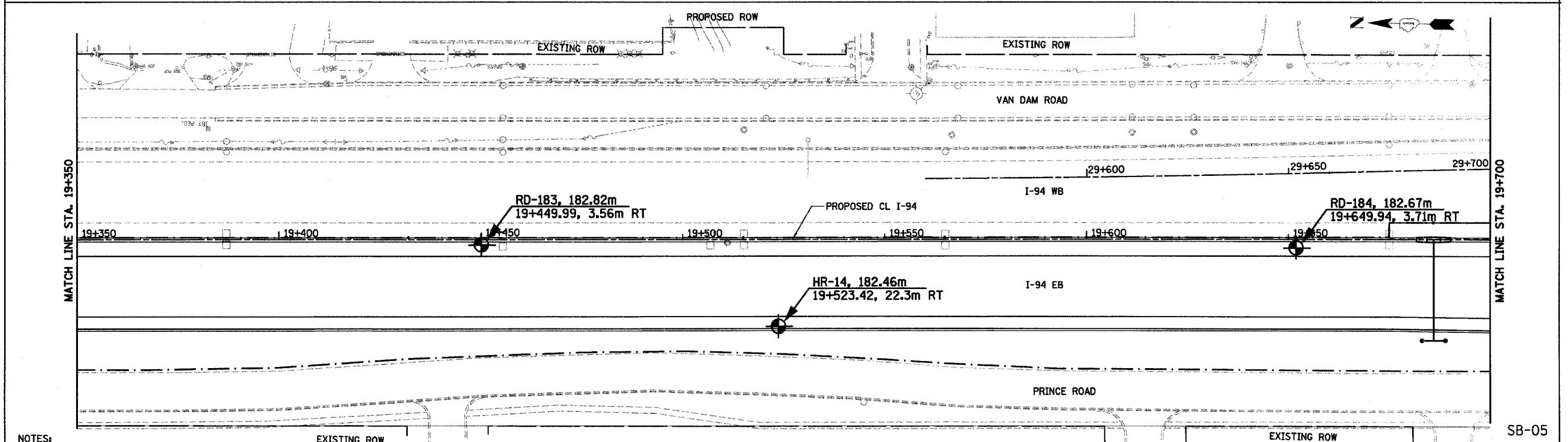
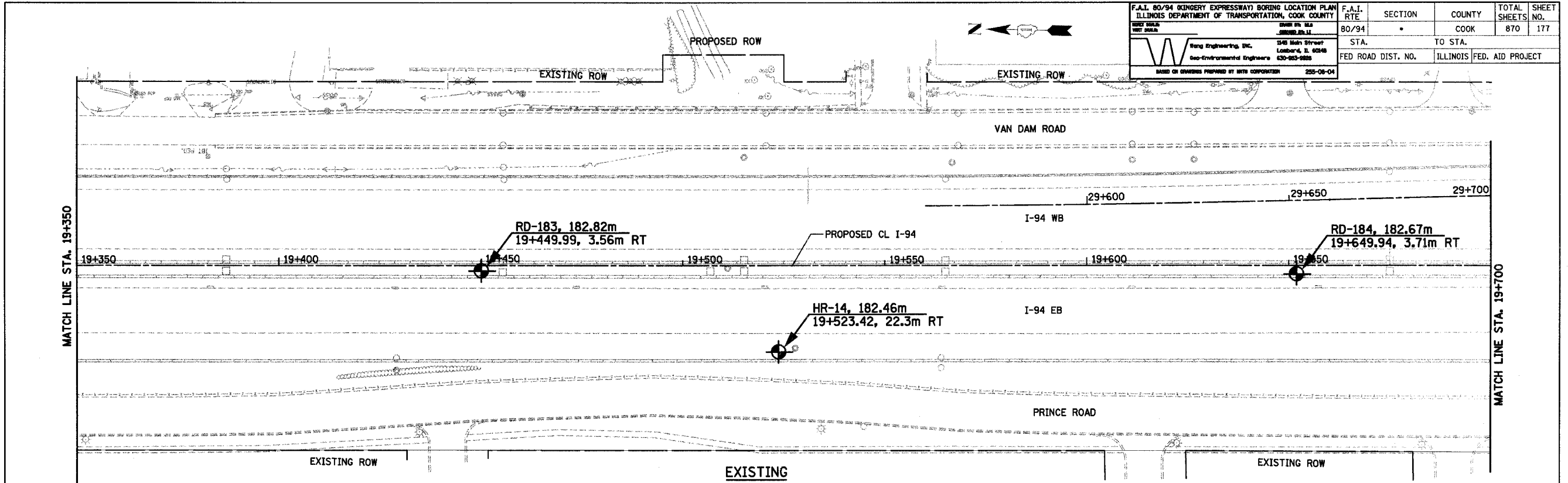
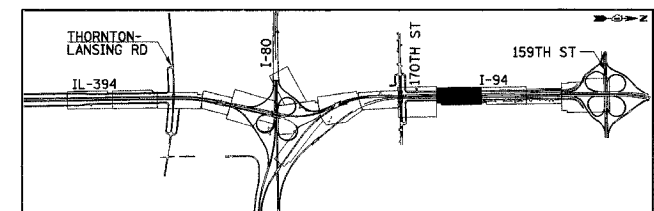


F.A.I. 80/94 (KINGERY EXPRESSWAY) BORING LOCATION PLAN ILLINOIS DEPARTMENT OF TRANSPORTATION, COOK COUNTY		F.A.I. RTE	SECTION	COUNTY	TOTAL SHEETS	SHEET NO.
DRAWN BY: JLS CHECKED BY: JLS		80/94	.	COOK	870	177
Wang Engineering, Inc. Geo-Environmental Engineers 346 Main Street Lombard, IL 60148 630-953-8888		STA.	TO STA.			
BASED ON DRAWINGS PREPARED BY ITRC CORPORATION 235-08-04		FED ROAD DIST. NO.		ILLINOIS FED. AID PROJECT		



- NOTES:
1. ALL STATIONING AND OFFSET MEASUREMENTS OFF @ I-94 UNLESS OTHERWISE NOTED
  2. ALL DIMENSIONS ARE IN METERS (m) UNLESS OTHERWISE NOTED.



REVISIONS	
NAME	DATE

ILLINOIS DEPARTMENT OF TRANSPORTATION  
I-94 EAST BOUND / IL 394 SOUTH BOUND

**SOIL BORING PLAN**  
I-94  
STA. 19+350 TO STA. 19+700

HORIZ SCALE: 1:500  
VERT SCALE:  
DATE: JULY 18, 2005

DRAWN BY:  
CHECKED BY: