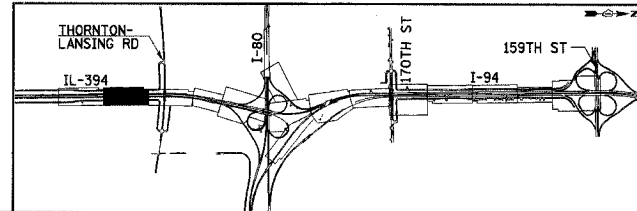
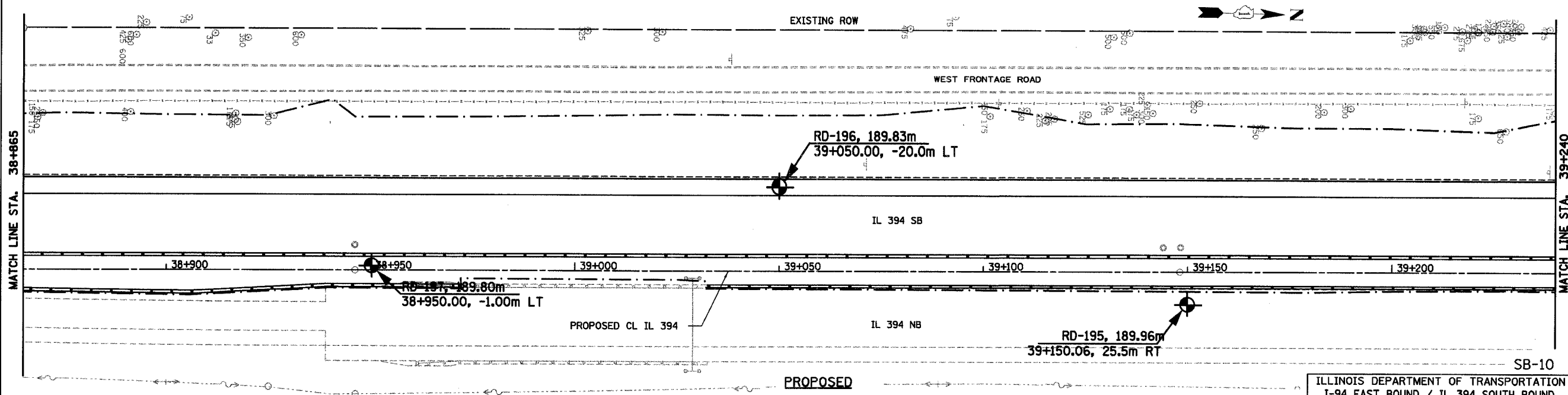
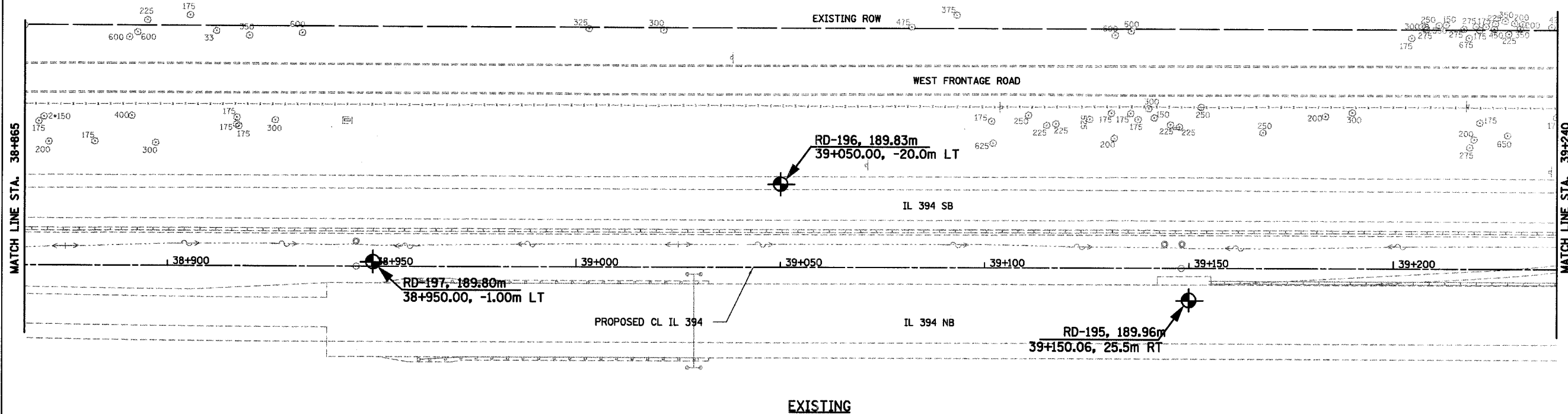


NOTES:
 1. ALL STATIONING AND OFFSET MEASUREMENTS OFF CL IL 394 UNLESS OTHERWISE NOTED.
 2. ALL DIMENSIONS ARE IN METERS (m) UNLESS OTHERWISE NOTED.

F.A.I. 80/94 (KINGERY EXPRESSWAY) BORING LOCATION PLAN ILLINOIS DEPARTMENT OF TRANSPORTATION, COOK COUNTY		F.A.I. RTE.	SECTION	COUNTY	TOTAL SHEETS NO.	SHEET NO.
RD-197, 189.80m 38+950.00, -1.00m LT		80/94	*	COOK	870	182
RD-196, 189.83m 39+050.00, -20.0m LT		STA. 38+900 TO STA. 39+250		ILLINOIS FED. AID PROJECT		
RD-195, 189.96m 39+150.06, 25.5m RT		FED ROAD DIST. NO.		ILLINOIS FED. AID PROJECT		



REVISIONS	
NAME	DATE

ILLINOIS DEPARTMENT OF TRANSPORTATION
 I-94 EAST BOUND / IL 394 SOUTH BOUND

SOIL BORING PLAN
IL-394
STA. 38+865 TO STA. 39+240

HORIZ SCALE: 1:500
 VERT SCALE:
 DATE: JULY 18, 2005

DRAWN BY:
 CHECKED BY: