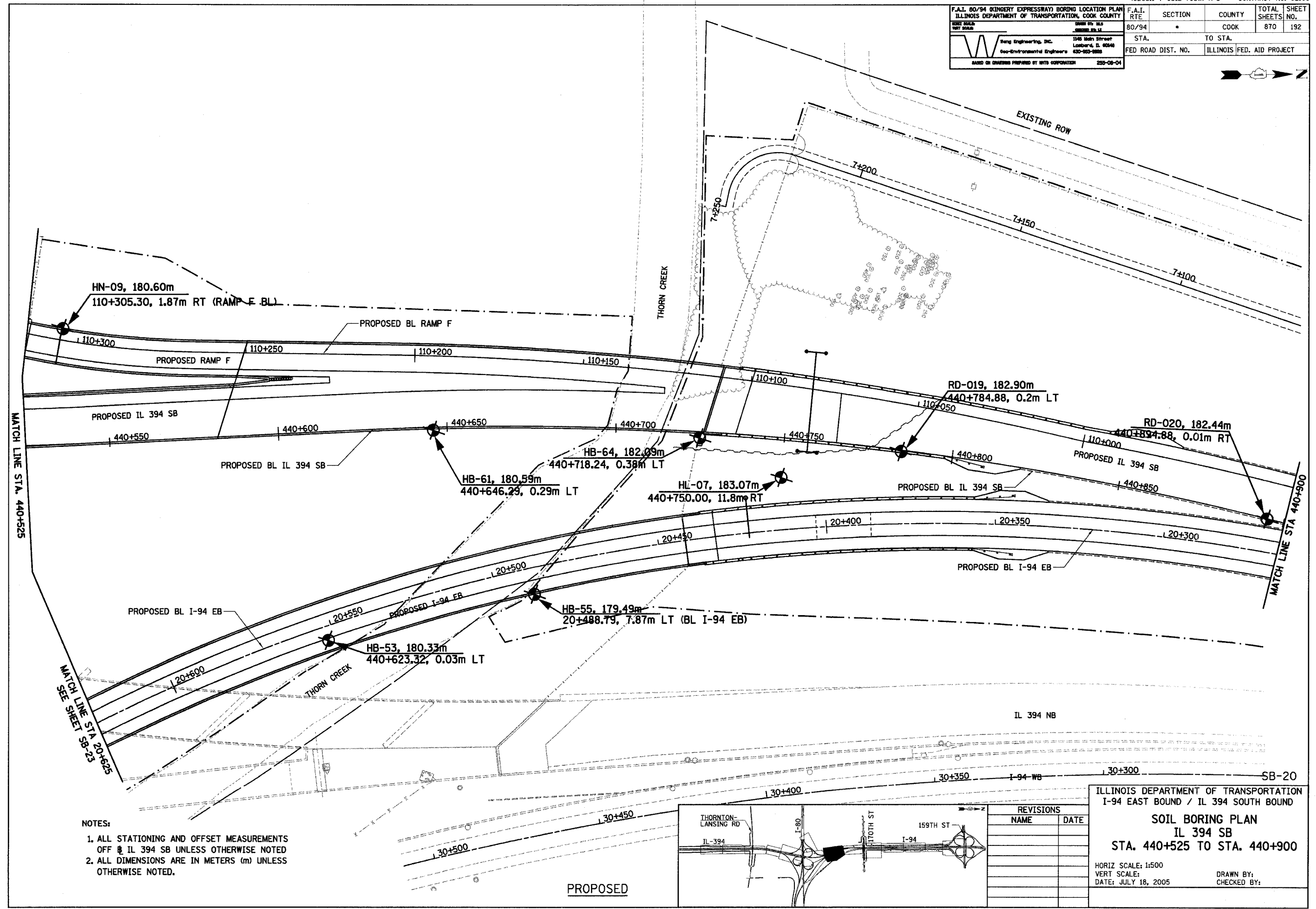
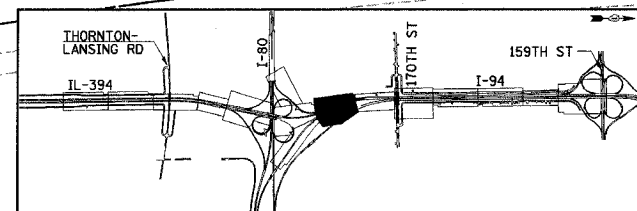


F.A.I. 80/94 (KINGERY EXPRESSWAY) BORING LOCATION PLAN ILLINOIS DEPARTMENT OF TRANSPORTATION, COOK COUNTY		F.A.I. R.T.E.	SECTION	COUNTY	TOTAL SHEETS	SHEET NO.
80/94				COOK	870	192
STA.		TO STA.				
FED ROAD DIST. NO.		ILLINOIS FED. AID PROJECT				

Wang Engineering, Inc.
346 Main Street
Lombard, IL 60148
Geo-Environmental Engineers
630-953-8883
250-08-04



- NOTES:
1. ALL STATIONING AND OFFSET MEASUREMENTS OFF IL 394 SB UNLESS OTHERWISE NOTED
 2. ALL DIMENSIONS ARE IN METERS (m) UNLESS OTHERWISE NOTED.



REVISIONS	
NAME	DATE

ILLINOIS DEPARTMENT OF TRANSPORTATION
I-94 EAST BOUND / IL 394 SOUTH BOUND

SOIL BORING PLAN
IL 394 SB
STA. 440+525 TO STA. 440+900

HORIZ SCALE: 1:500
VERT SCALE: 1:50
DATE: JULY 18, 2005

DRAWN BY:
CHECKED BY: