

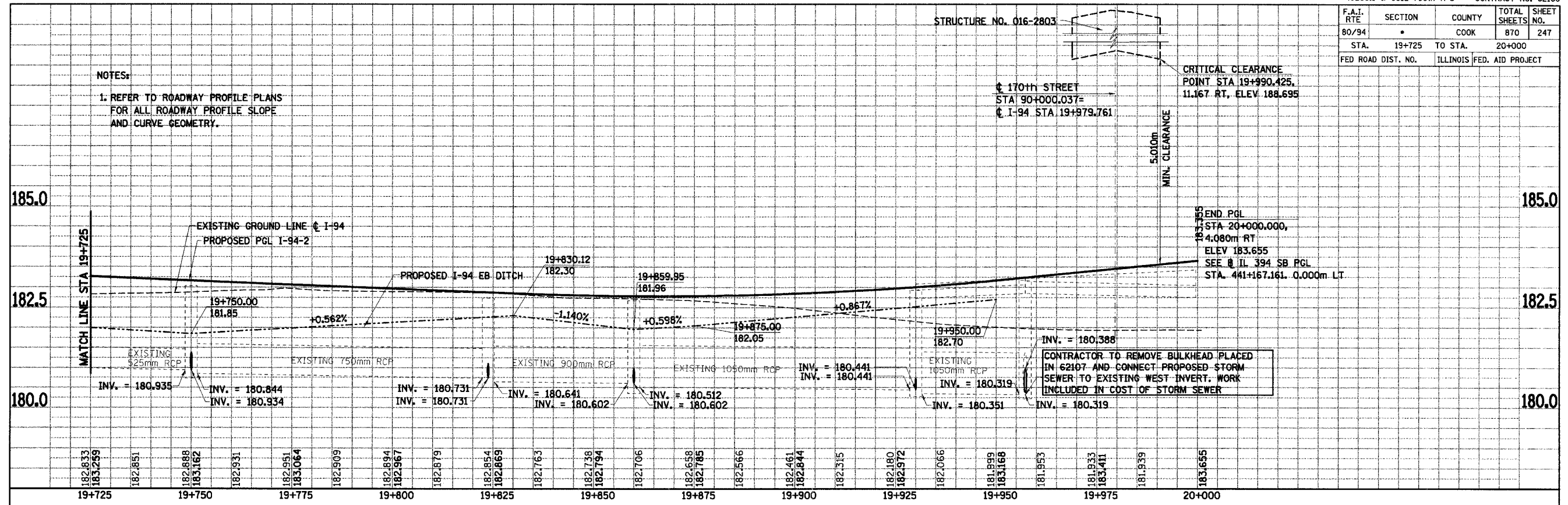
F.A.I. RTE	SECTION	COUNTY	TOTAL SHEETS	SHEET NO.
80/94	*	COOK	870	247
STA. 19+725 TO STA. 20+000				
FED ROAD DIST. NO.		ILLINOIS FED. AID PROJECT		

NOTES:
1. REFER TO ROADWAY PROFILE PLANS FOR ALL ROADWAY PROFILE SLOPE AND CURVE GEOMETRY.

STRUCTURE NO. 016-2803

170th STREET
STA 90+000.037=
I-94 STA 19+979.761

CRITICAL CLEARANCE
POINT STA 19+990.425,
11.167 RT, ELEV 188.695



182.833	183.259	182.851	182.888	183.162	182.931	182.951	183.064	182.909	182.894	182.967	182.879	182.854	182.869	182.763	182.738	182.794	182.706	182.658	182.785	182.566	182.461	182.844	182.315	182.180	182.972	182.066	181.999	183.168	181.953	181.933	183.411	181.939	183.655		
19+725	19+750	19+775	19+800	19+825	19+850	19+875	19+900	19+925	19+950	19+975	20+000																								

REVISIONS	
NAME	DATE

ILLINOIS DEPARTMENT OF TRANSPORTATION
I-94 EAST BOUND / IL 394 SOUTH BOUND
DRAINAGE PROFILE
I-94
STA. 19+725 TO STA. 20+000
HORIZ SCALE: 1 : 500
VERT SCALE: 1 : 50
DATE: JULY 18, 2005
DRAWN BY: JPH
CHECKED BY: MAM

