

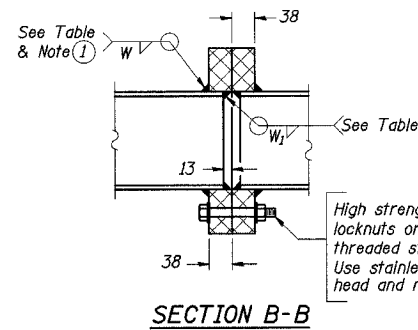
STATE OF ILLINOIS
DEPARTMENT OF TRANSPORTATION

ROUTE NO.	SECTION	COUNTY	TOTAL SHEETS	SHEET NO.
F. A. I. 80/94	*	COOK	870	317
FED. ROAD DIST. NO. 1		ILLINOIS	FED. AID PROJECT-	
* (0203.1 & 0312-708) R3		CONTRACT NO. 62108		

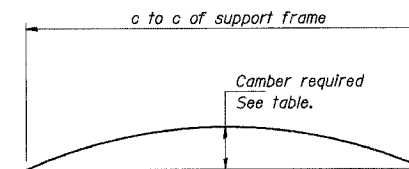
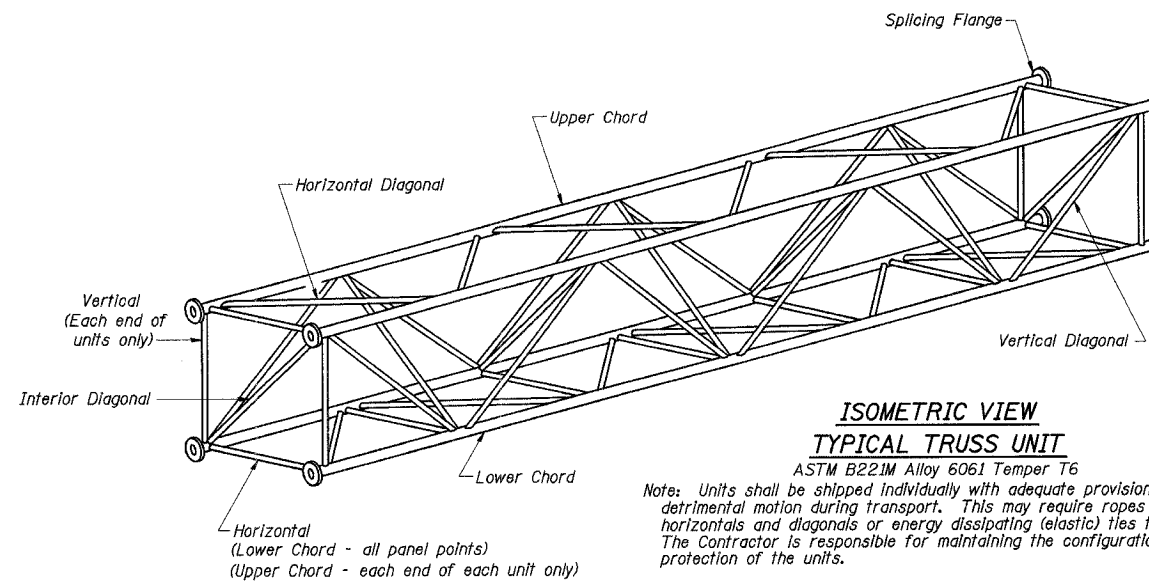
TRUSS UNIT TABLE

Structure Number	Station	Design Truss Type	Exterior Units (2)			Interior Unit			Upper & Lower chord		Verticals; Horizontals; Vertical, Horizontal, and Interior Diagonals		Camber at Midspan	Splicing Flange						
			No. Panels per Unit	Unit Lgth.(L _u) (m)	Panel Lgth.(P) (m)	No. Req'd.	No. Panels per Unit	Unit Lgth.(L _i) (m)	Panel Lgth.(P) (m)	O.D.	Wall	O.D.		Wall	Bolts		Weld Sizes		A	B
															No./Splice	Dia.	W	W ₁		
ISO161094R073.3	18+871	I-A	6	8.634	1.344	1	6	8.444	1.344	127	8	64	8	64	6	22	8	6	222	298
ISO161094R073.5	19+274	II-A	5	8.070	1.500	1	6	9.380	1.500	140	8	76	8	41	6	22	10	6	235	311
ISO161094R073.8	19+686	II-A	5	8.070	1.500	1	6	9.380	1.500	140	8	76	8	41	6	22	10	6	235	311
ISO16S394R	440+757 (IL-394)	II-A	6	9.570	1.500	1	6	9.380	1.500	152	8	76	8	53	6	22	10	6	260	349

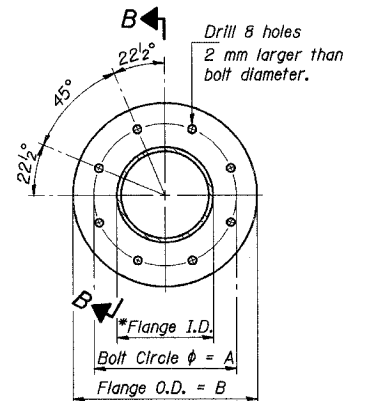
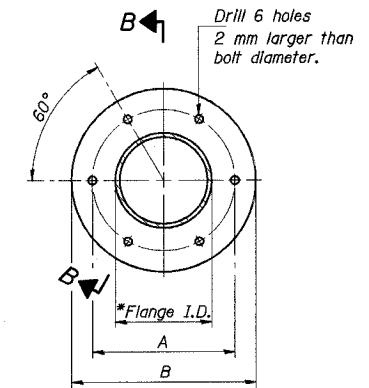
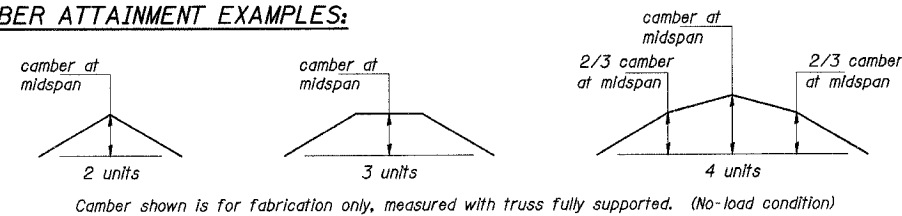
Note: all stationing is based on I - 94 unless noted otherwise.



① Splicing Flanges shall be attached to each truss unit with the truss shop assembled to camber shown. Truss units shall be in proper alignment and flange surfaces shall be shop bolted into full contact before welding. Sufficient external welds or tacks shall be made to secure flanges until remaining welds are made after disassembly. Adjacent flanges shall be "match marked" to insure proper field assembly.



CAMBER ATTAINMENT EXAMPLES:



SPLICING FLANGES

ASTM B221M, Alloy 6061-T6
or ASTM B209M, Alloy 6061-T651
*To fit O.D. of Chord with maximum gap of 2 mm.

NUMBER	REVISION	DATE

DESIGNED	PY
CHECKED	DD
DRAWN	LK
CHECKED	DD

OS4-A-2(M) 11/1/2002

J:\Beauchamp\ET\34562\CADD\1\1\Signa\Contract\9\ods\esi\90034.dgn 08-JUL-2005 15:52

ILLINOIS DEPARTMENT OF TRANSPORTATION
I-80/94/US 6 (KINGERY EXPRESSWAY)

OVERHEAD SIGN STRUCTURES
ALUMINUM TRUSS DETAILS
FOR TRUSS TYPES I-A, II-A AND III-A

DATE: JUL 18, 2005
SCALE: ---

HNTB