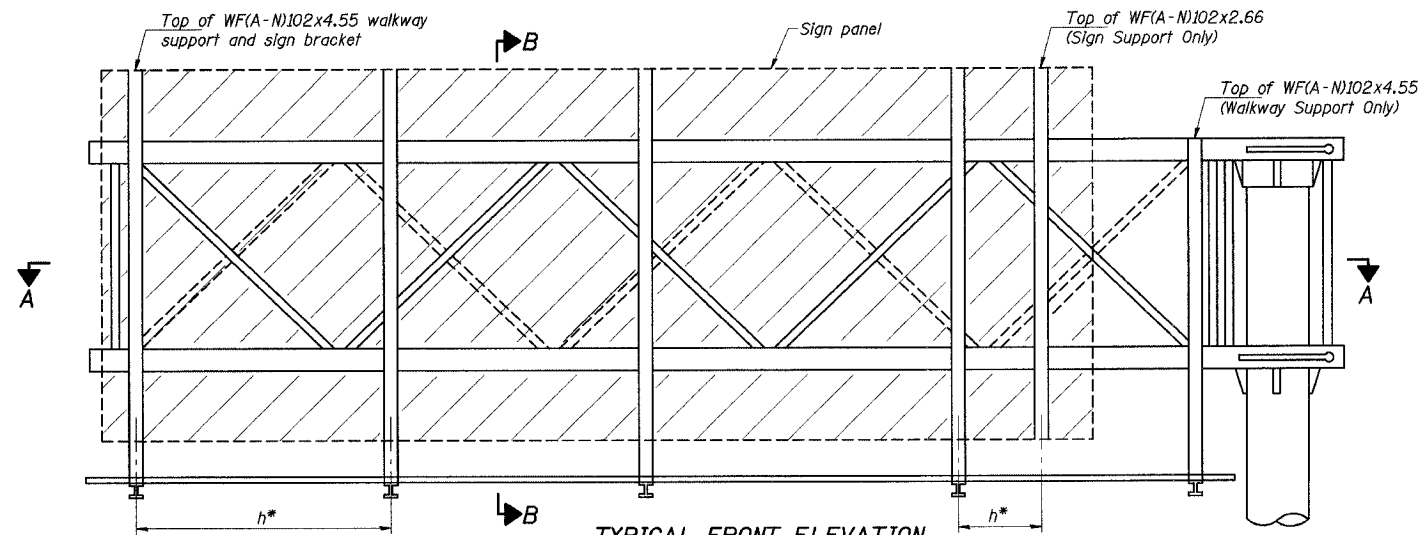


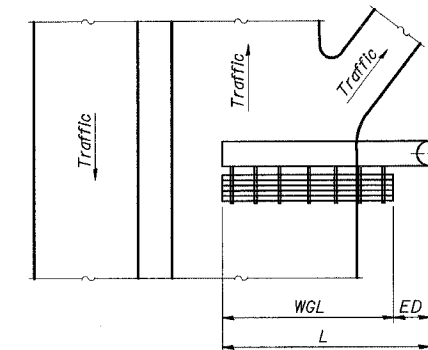
STATE OF ILLINOIS  
DEPARTMENT OF TRANSPORTATION

ROUTE NO.	SECTION	COUNTY	TOTAL SHEETS	SHEET NO.
F. A. I. 80/94	*	COOK	870	331
FED. ROAD DIST. NO. 1	ILLINOIS	FED. AID PROJECT-		

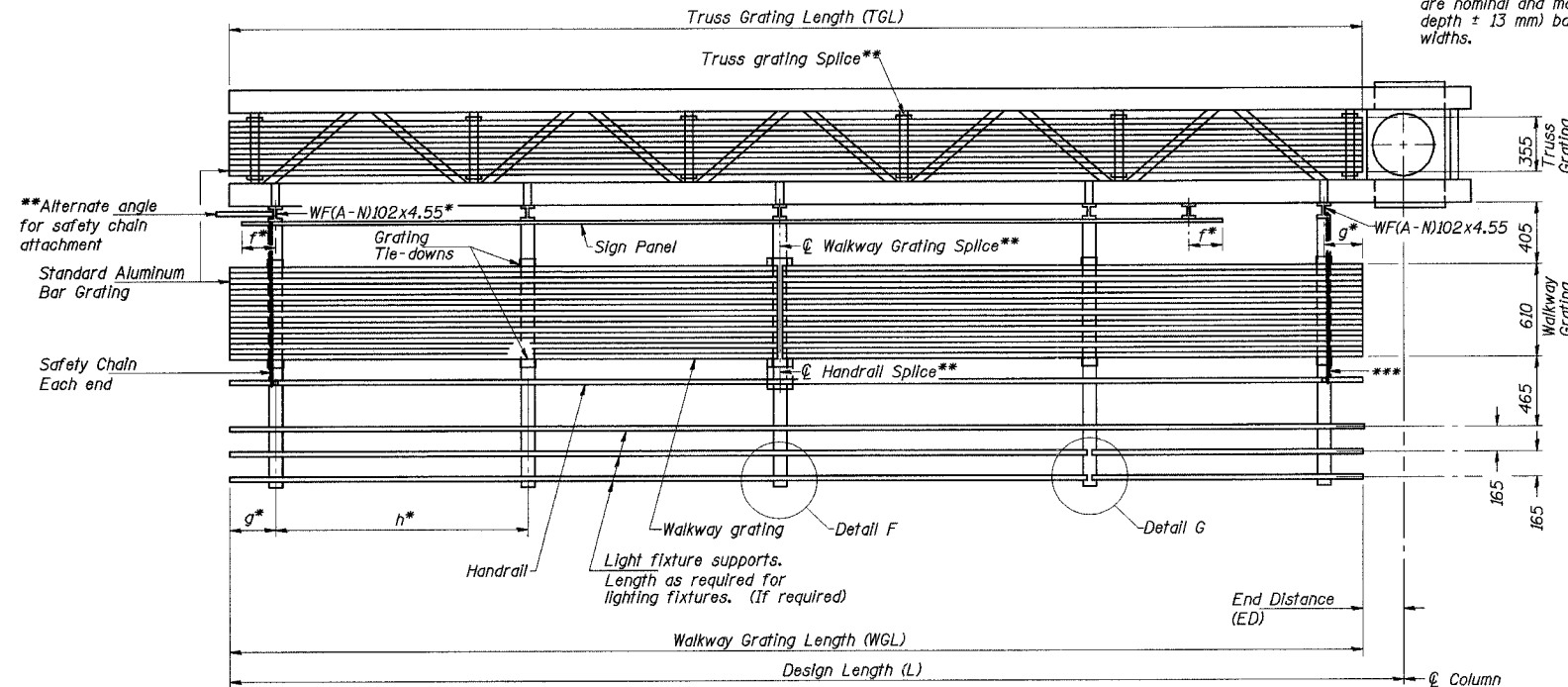
• (0203.1 & 0312-708W) R3 CONTRACT NO. 62108



**TYPICAL FRONT ELEVATION**  
With lights and handrail omitted for clarity.



**WALKWAY AND HANDRAIL SKETCH**  
(Road plan beneath truss varies)



**SECTION A-A**

Truss grating to facilitate inspection shall run full length of cantilevers. Cost of truss grating is included in "Overhead Sign Structure Cantilever".

Handrail and walkway grating shall span a minimum of three brackets between splices.  
\*\*Use and location of handrail or grating splices are optional, based on lengths needed and material availability.

$$TGL = L - \left( \frac{\text{Post O.D.}}{2} + 150 \right)$$

NUMBER	REVISION	DATE

DESIGNED	PY
CHECKED	DD
DRAWN	LK
CHECKED	DD

OSC-A-6(M) 11/1/2002

Walkway and truss grating dimensions are nominal and may vary (width ± 13 mm, depth ± 13 mm) based on available standard widths.

Structure Number	Station	WGL **** (m)	ED (m)	TGL (m)
IC0161094R073.4	19+072 (I-94)	7,600	4,450	11,595
IC0161094R074.3	20+423 (I-94 EB)	7,600	4,235	11,380

\*\*\*\*WGL dimension shown above is based on g = 200mm and h = 1.80m

Notes: \*Space walkway brackets WFA(N)-102x4.55 and sign brackets WFA(N)-102x2.66 for efficiency and within limits shown:

f = 300 maximum, 100 minimum (End of sign to center of nearest bracket)  
g = 300 maximum, 100 minimum (End of walkway to center of nearest bracket)  
h = 1.85 m maximum (center to center sign and/or walkway support brackets, WFA(N)-102x2.66 or WFA(N)-102x4.55)

\*\*\*If walkway bracket at safety chain location is behind sign, add angle to bracket.  
For details of sign placement, sign/walkway brackets, truss and walkway gratings, grating splices and Section B-B, see Base Sheet OSC-A-7(M).  
For details of handrail, handrail splice, safety chain and Details F and G, see Base Sheet OSC-A-8(M).

**BRACKET TABLE**

WFA(N)-102x4.55 or WFA(N)-102x2.66 ASTM B308, Alloy 6061-T6		
Sign Width		Number Brackets Required
Greater Than	Less Than or Equal To	
	2.45	2
2.45	4.3	3
4.3	6.15	4
6.15	8.0	5
8.0	9.85	6

ILLINOIS DEPARTMENT OF TRANSPORTATION  
I-80/94/JUS 6 (KINGERY EXPRESSWAY)

CANTILEVER SIGN STRUCTURES  
ALUMINUM WALKWAY DETAILS  
ALUMINUM TRUSS & STEEL POST

DATE: JUL 18, 2005  
SCALE: ---

**HNTB**

J:\Beauchamp\EA\34862\CADD\lbi\Sigma\Contract\9\Cds\asi\90114.dgn  
08-JUL-2005 15:33