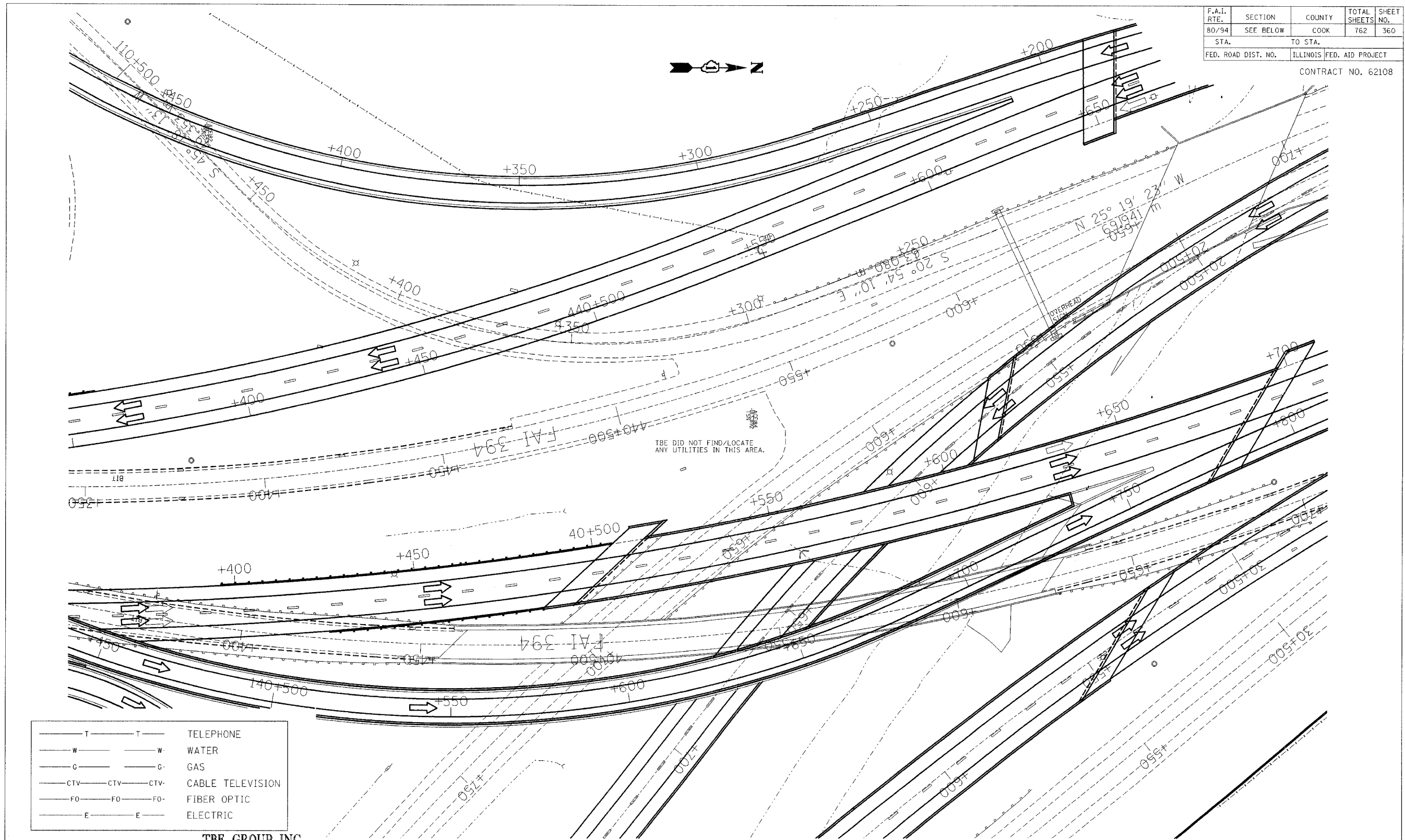


F.A.I. RTE.	SECTION	COUNTY	TOTAL SHEETS	SHEET NO.
80/94	SEE BELOW	COOK	762	360
STA.	TO STA.			
FED. ROAD DIST. NO.	ILLINOIS FED. AID PROJECT			

CONTRACT NO. 62108



— T — T —	TELEPHONE
— W — W —	WATER
— G — G —	GAS
— CTV — CTV — CTV —	CABLE TELEVISION
— FO — FO — FO —	FIBER OPTIC
— E — E —	ELECTRIC

**TBE GROUP, INC.**  
 CIVIL ENGINEERING • TRANSPORTATION • ENVIRONMENTAL  
 • PLANNING • UTILITY ENGINEERING/LOCATING  
 SOUTHERN REGION: FL, GA, SC, NC  
 NORTHERN REGION: IL, IN, MI, OH, MD, NJ, NY  
 PA, VA, CANADA  
 WESTERN REGION: AZ, NV, NM, TX, CA, OR, UT, WA

IL09500122  
 TBE SUE PAGE NO: 15 of 52

Signature \_\_\_\_\_  
 SUE Quality Level "A" : Test Holes  
 SUE Quality Level "B" : Designating



205 W. WACKER DRIVE  
 SUITE 1020  
 CHICAGO, IL 60606  
 (312) 704-1970

Utilities shown on these plans as depicted in the legend have been investigated by TBE Group, Inc in accordance with SUE Industry Standards as of 2/8/02. All other information shown has been provided to TBE Group, Inc by others.

REVISIONS		ILLINOIS DEPARTMENT OF TRANSPORTATION
NAME	DATE	
		E.of IL RT.83/US RT.6 to E.Burnham Ave. I-80/I-94 Burnham Ave. to State Line I-80/I-94 (Tollway)E.of I-94 to W. of RT.83/US 6. I-94/IL RT. 394 S.of US 6 to 186th Street(Nbound & Sbound)  Contract No. 62110, 62111,62114,62105,62107,62108 SCALE : 500 DRAWN BY : JAC SOL "B" DATE : 2/8/02 CHECKED BY