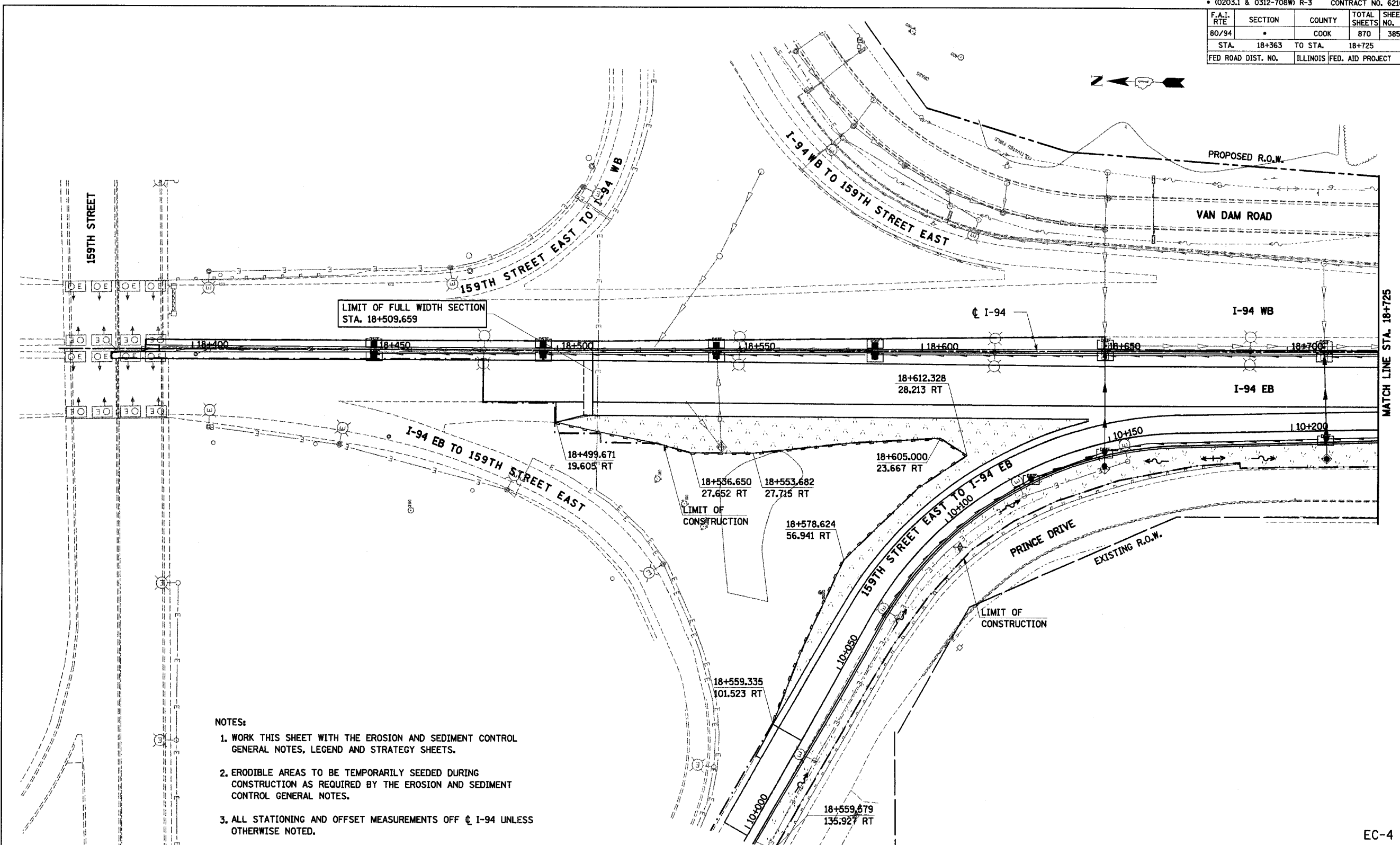
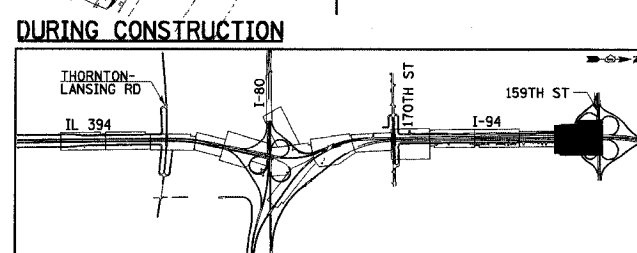


F.A.I. RTE	SECTION	COUNTY	TOTAL SHEETS	SHEET NO.
80/94	*	COOK	870	385
STA.	18+363	TO STA.	18+725	
FED ROAD DIST. NO.	ILLINOIS FED. AID PROJECT			



- NOTES:**
1. WORK THIS SHEET WITH THE EROSION AND SEDIMENT CONTROL GENERAL NOTES, LEGEND AND STRATEGY SHEETS.
  2. ERODIBLE AREAS TO BE TEMPORARILY SEEDED DURING CONSTRUCTION AS REQUIRED BY THE EROSION AND SEDIMENT CONTROL GENERAL NOTES.
  3. ALL STATIONING AND OFFSET MEASUREMENTS OFF  $\phi$  I-94 UNLESS OTHERWISE NOTED.
  4. ALL DIMENSIONS ARE IN METERS (m) UNLESS OTHERWISE NOTED.
  5. ALL MEDIAN DRAINAGE STRUCTURES TO HAVE SEDIMENT CONTROL DRAINAGE STRUCTURE INLET FILTER ON BOTH GRATES.
  6. TEMPORARY FENCE TO BE PLACED AT LOCATIONS ALONG ALL CONSTRUCTION LIMITS WHERE PERIMETER EROSION BARRIER IS NOT INDICATED (TEMPORARY FENCE NOT SHOWN AT THESE LOCATIONS FOR CLARITY).



REVISIONS	
NAME	DATE

ILLINOIS DEPARTMENT OF TRANSPORTATION  
I-94 EAST BOUND / IL 394 SOUTH BOUND

**EROSION CONTROL PLAN**  
I-94  
STA. 18+363 TO STA. 18+725

HORIZ SCALE: 1:500  
VERT SCALE:  
DATE: JULY 18, 2005

DRAWN BY: JPH  
CHECKED BY: MAM

**HNTB**

EC-4